

Product datasheet for **RC221003**

ADAMTSL5 (NM_213604) Human Tagged ORF Clone

Product data:

Product Type:	Expression Plasmids
Product Name:	ADAMTSL5 (NM_213604) Human Tagged ORF Clone
Tag:	Myc-DDK
Symbol:	ADAMTSL5
Synonyms:	THSD6
Mammalian Cell Selection:	Neomycin
Vector:	pCMV6-Entry (PS100001)
E. coli Selection:	Kanamycin (25 ug/mL)



[View online »](#)

ORF Nucleotide Sequence:

>RC221003 representing NM_213604
 Red=Cloning site Blue=ORF Green=Tags(s)

TTTTGTAATACGACTCACTATAGGGCGGCCGGAATTCGTCGACTGGATCCGGTACCGAGGAGATCTGCC
 GCC**CGGATCGCC**

ATGGACTCGGCCCTCTGTTCCCCAGGCCACCTCTTCCAGAACCTCCTGCTTCTCCTGTGGCCCTGC
 TGAAGTGTGGTTTGGGGTCAAGTCTCAGGGTCCGGGCGAGTGGACCCCGTGGGTCTCCTGGACCGCTG
 CTCAGCTCCTGCGGGCGTGGCGTCTCTGTGCGCAGCCGCGCTGCCTCCGGCTTCTGGGGAAGAACC
 TGCTGGGAGACTCCCATGAGTACCGCCTCTGCCAGTTGCCAGACTGCCCCCAGGGGCTGTGCCCTCC
 GAGACCTACAGTGTGCCCTGTACAATGGCCGCCCTGTCTGGGCACCCAGAAGACCTACCAGTGGGTGCC
 CTTCCATGGGGCGCCCAACCACTGCGACCTCAACTGCCTGGCTGAGGGGCACGCCTTCTACCACAGTTC
 GGCCGCTCCTGGACGGCACCCTGCAGCCGGGTGCCAGGGGTCTGCGTGGCTGGCCGCTGCCTTA
 GCGCCGGTGTGATGGGTGTTGGGCTCGGTGCCCTCGAGGACCCTGTGGCCGCTCGGAGGCGCCAA
 CGACTCGTGCCTTTTCGTGCAGCGCTGTTTCGTGACCCGGTGCCTTCGCTGGGTACTGGAACGTGACC
 CTGATCCCGAGGGCGCCAGACACATCCCGTGGAAACACAGGAGCCGCAACCACCTGGCACTGATGGGG
 GCGATGGGCGCTACGTGCTAATGGGCACTGGGTGGTCAGCCACCAGGGACCTACGAGGCGCCGGCAC
 GCATGTGGTCTACACCCGAGACACAGGGCCCCAGGAGACATTGCAAGCAGCCGGGCCACCTCCCATGAC
 CTGCTCTACAGTCTCCTGCAGGAGCCCAACCTGGCATCGAGTTTGAAGTCTGGCTCCCTCGGGAGC
 GCTACAGCCCTTCCAGGCTCGTGTGCAGGCCCTGGGCTGGCCCTGAGGCAGCTCAGCCCCGGGGGT
 GGAGCCTCAGCCCCCGCAGCCCTGCTGTACCCCTGCACAGACCCCAACGCTGGCCCCAGACCCCTGC
 CCACCCCGCCCTGACACCCGCGGCCGCGCCACCGACTACTCCACTATTGCGGCAGTACTTTGTGTTCC
 AGGCCGAGTGTGGCCACCACCAGGCCAGGAGACCCGCTATGAGGTGCGCATCCAGCTCGTCTA
 CAAGAACCGCTCGCCACTGCGGGCAGCGAGTACGTGTGGGCGCAGGCCACTGCCCTGCCCGATGCTG
 GCACCCACCGGGACTACCTGATGGCTGTCCAGCGTCTTGTAGCCCGACGGCACACAGGACCAGTGC
 TGCTGCCCCACGCGGCTACGCCGGCCCTGGAGCCCTGCGGAGGACAGCCGCATACGCTGACTGCCCG
 GCGCTGCTCTGGC

ACGCGTACGCGGCCGCTCGAGCAGAACTCATCTCAGAAGAGGATCTGGCAGCAAATGATATCCTGGATT
 ACAAGGATGACGACGATAAGGTTTAA

Protein Sequence:

>RC221003 representing NM_213604
 Red=Cloning site Green=Tags(s)

MDSAPLFPRPHLFQNLFLWALLNCLGVSAQGPGEWTPWVSWTRCSSSCGRGVSRSRRLRLPGEEP
 CWGDSHEYRLCQLPDCPPGAVPFRDLQCALYNGRPVLTQKTYQWVPHGAPNQCDLNCLAEGHAFYHSF
 GRVLDGTACSPGAQGVAVGRCLSAGCDLLGSGALEDRCGRCCGANDSCLFVQRVFRDAGAFAGYWNVT
 LIPEGARHIRVEHRSRNHLALMGDGRYVLNGHWVSPPGTYEAAGTHVYTRDTGPQETLQAAGPTSHD
 LLLQVLLQEPNPGIEFEFWLPRERYSPFQARVQALGWPLRQPQPRGVEPPAAPAVTPAQPTPLAPDPC
 PPCPDTRGRAHRLHYCGSDFVFQARVLGHHHQAEQTRYEVRIQLVYKNRSPLRAREYVWAPGHCPMP
 LAPHRDYLMVQRLVSPDGTQDQLLPHAGYARPWSPAEDSRIRLTARRCPG

TRTRPLEQKLISEEDLAANDILDYKDDDDKV

Chromatograms:

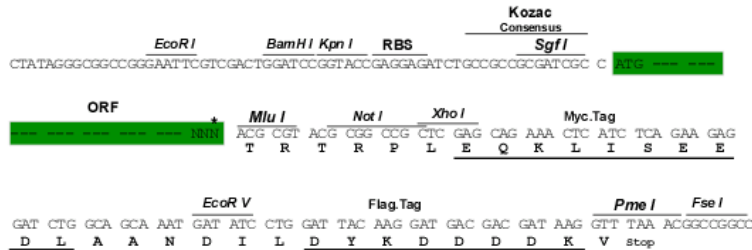
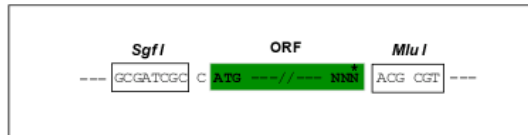
https://cdn.origene.com/chromatograms/mk8014_d08.zip

Restriction Sites:

Sgfl-MluI

Cloning Scheme:

Cloning sites used for ORF Shutting:



* The last codon before the Stop codon of the ORF

ACCN: NM_213604

ORF Size: 1413 bp

OTI Disclaimer: The molecular sequence of this clone aligns with the gene accession number as a point of reference only. However, individual transcript sequences of the same gene can differ through naturally occurring variations (e.g. polymorphisms), each with its own valid existence. This clone is substantially in agreement with the reference, but a complete review of all prevailing variants is recommended prior to use. [More info](#)

OTI Annotation: This clone was engineered to express the complete ORF with an expression tag. Expression varies depending on the nature of the gene.

Components: The ORF clone is ion-exchange column purified and shipped in a 2D barcoded Matrix tube containing 10ug of transfection-ready, dried plasmid DNA (reconstitute with 100 ul of water).

Reconstitution Method:

1. Centrifuge at 5,000xg for 5min.
2. Carefully open the tube and add 100ul of sterile water to dissolve the DNA.
3. Close the tube and incubate for 10 minutes at room temperature.
4. Briefly vortex the tube and then do a quick spin (less than 5000xg) to concentrate the liquid at the bottom.
5. Store the suspended plasmid at -20°C. The DNA is stable for at least one year from date of shipping when stored at -20°C.

RefSeq: [NM_213604.3](#)
RefSeq Size: 2682 bp

RefSeq ORF: 1416 bp

Locus ID: 339366

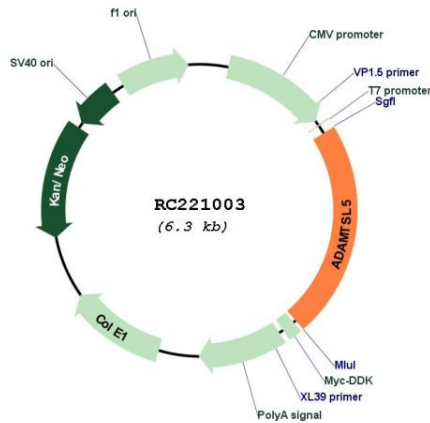
UniProt ID: [Q6ZMM2](#)
Cytogenetics: 19p13.3

Protein Families: Secreted Protein

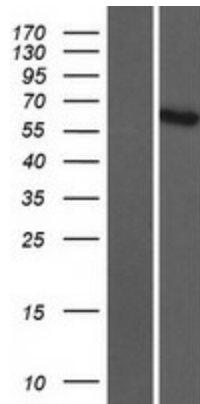
MW: 51.9 kDa

Gene Summary: May play a role in modulation of fibrillin microfibrils in the extracellular matrix (ECM).
[UniProtKB/Swiss-Prot Function]

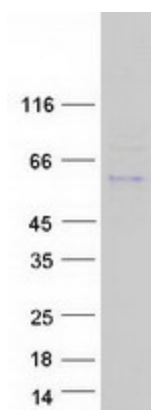
Product images:



Circular map for RC221003



Western blot validation of overexpression lysate (Cat# [LY403882]) using anti-DDK antibody (Cat# [TA50011-100]). Left: Cell lysates from untransfected HEK293T cells; Right: Cell lysates from HEK293T cells transfected with RC221003 using transfection reagent MegaTran 2.0 (Cat# [TT210002]).



Coomassie blue staining of purified ADAMTSL5 protein (Cat# [TP321003]). The protein was produced from HEK293T cells transfected with ADAMTSL5 cDNA clone (Cat# RC221003) using MegaTran 2.0 (Cat# [TT210002]).