

Product datasheet for **RC220988**

CCDC74A (NM_138770) Human Tagged ORF Clone

Product data:

Product Type:	Expression Plasmids
Product Name:	CCDC74A (NM_138770) Human Tagged ORF Clone
Tag:	Myc-DDK
Symbol:	CCDC74A
Mammalian Cell Selection:	Neomycin
Vector:	pCMV6-Entry (PS100001)
E. coli Selection:	Kanamycin (25 ug/mL)
ORF Nucleotide Sequence:	>RC220988 ORF sequence Red=Cloning site Blue=ORF Green=Tags(s)

TTTTGTAATACGACTCACTATAGGGCGGCCGGGAATTCGTCGACTGGATCCGGTACCGAGGAGATCTGCC
GCC**CGATCGCC**

ATGAGCGGTGCGGGGTGGCGGCTGGGACGCGGCCCCAGCTCGCCGACCCGGGCTCTCGGCGCCGGC
GCCAGCGCCCCTGTGGGCGTCCAGTCCCTTGAAGCCGCAGAGCCCGCAGCTCAGGCAGAGCGACCCGCA
GAAACGGAACTGGACCTGGAGAAAAGCCTGCAGTTCCTGCAGCAGCAGCACTCGGAGATGCTGGCCAAG
CTCCATGAGGAGATCGAGCATCTGAAGCGGGAAAACAAGGATCTCCATTACAAGCTCATAATGAATCAGA
CATCACAGAAGAAAGATGGCCCTCAGGAAACCACCTTTCCAGGGCTCTGCTCCCTGGGCGCTCGCTG
GGTCTGCATCAACGGAGTGTGGGTAGAGCCGGGAGGACCCAGCCCTGCCAGGCTGAAGGAGGGCTCCTCA
CGGACACACAGGCCAGGAGGCAAGCGTGGGCGTCTTGGGGCGGTAGCGCCGACACTGTGCGCTCTCCTG
CAGACAGCCTCTCCATGTCAAGCTTCCAGTCTGTCAAGTCCATCTCTAATTCAGGCAAGGCCAGGCCCA
GCCCGGCTCCTTCAACAAGCAAGATTCAAAGCTGACGTCTCCAGAAGGCGGACCTGGAAGAGGAGCCC
CTACTTCAACAAGCAAGCTGGACAAAGTCTGGGGTACAAGGGCAGGCCAGAAAGGAGAAAGCAGAGG
CCTCTAATGCAGGAGCTGCCTGTATGGGGAACAGCCAGCACCAGGCAGGCAGATGGGGCGGGGGCACA
CCCCCAATGATCCTGCCCTTCCCTGCGAAAGCCACCACACTTAGGCAGTGCAGAGTCTCATCCGC
GAGCTGTGGAATACCAACCTCCTGCAGACCAAGAGCTGCGGCACCTCAAGTCCCTCCTGGAAGGGAGCC
AGAGGCCCCAGGCAGCCCGGAGGAAGTAGCTTCCAGGGACCAAGAAGCCACGCATTTCCCAAGGT
CTCCACCAAGAGCCTCTCAAGAAATGCCTGAGCCACCTGTGGCGGAGCGTGCCATCCTGCCCGCACTG
AAGCAGACCCCGAACAACCTTTCGCCGAGAGGAGAAGAGGCTGCAGGCAATGCAGAAACGGCGCCTGC
ATCGCTCAGTGCTT

ACGCGTACGCGGCCGCTCGAGCAGAACTCATCTCAGAAGAGGATCTGGCAGCAATGATATCCTGGATT
ACAAGGATGACGACGATAAGGTTTAA



[View online »](#)

Protein Sequence: >RC220988 protein sequence
Red=Cloning site Green=Tags(s)

MSGAGVAAGTRPPSSPTPGSRRRRQRPSVGVQSLRPQSPQLRQSDPQKRNL DLEKSLQFLQQHSEMLAK
 LHEEIEHLKRENKDLHYKLI MNQTSQKKDGP SGNHLSRASAPLGARWVCINGVWVEPGGSPARLKEGSS
 RTHRPGGKRGRLAGGSADTVRSPADLSMSSFQSVKSI SNGKARPQPGS FNKQDSKADVSQKADLEEEEP
 LLHNSKLDKVPGVQGVQARKEAEASNAGAACMGNSQHQRMGAGAHPPMILPLLRKPTTLRQCEVLIR
 ELWNTNLLQTQELRHLKSLLEGSQRPAAPEEASFPRDQEATHFPKVSTKSLSKKCLSPVAERAILPAL
 KQTPKNNFAERQKRLQAMQKRRLLHRSVL

TRTRPLEQKLISEEDLAANDILDYKDDDDKV

Chromatograms: https://cdn.origene.com/chromatograms/mk6309_h02.zip

Restriction Sites: SgfI-MluI

Cloning Scheme:

Cloning sites used for ORF Shuttling:



* The last codon before the Stop codon of the ORF

ACCN: NM_138770

ORF Size: 1134 bp

OTI Disclaimer: The molecular sequence of this clone aligns with the gene accession number as a point of reference only. However, individual transcript sequences of the same gene can differ through naturally occurring variations (e.g. polymorphisms), each with its own valid existence. This clone is substantially in agreement with the reference, but a complete review of all prevailing variants is recommended prior to use. [More info](#)

OTI Annotation: This clone was engineered to express the complete ORF with an expression tag. Expression varies depending on the nature of the gene.

Components: The ORF clone is ion-exchange column purified and shipped in a 2D barcoded Matrix tube containing 10ug of transfection-ready, dried plasmid DNA (reconstitute with 100 ul of water).

Reconstitution Method:

1. Centrifuge at 5,000xg for 5min.
2. Carefully open the tube and add 100ul of sterile water to dissolve the DNA.
3. Close the tube and incubate for 10 minutes at room temperature.
4. Briefly vortex the tube and then do a quick spin (less than 5000xg) to concentrate the liquid at the bottom.
5. Store the suspended plasmid at -20°C. The DNA is stable for at least one year from date of shipping when stored at -20°C.

RefSeq: [NM_138770.4](#)

RefSeq Size: 1557 bp

RefSeq ORF: 1137 bp

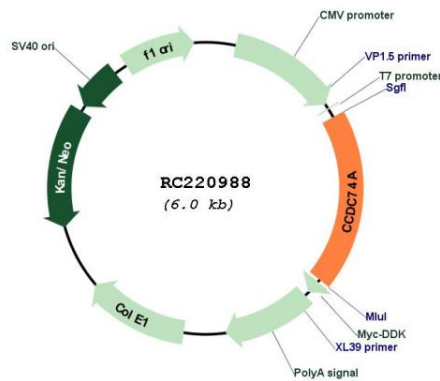
Locus ID: 90557

UniProt ID: [Q96AQ1](#)

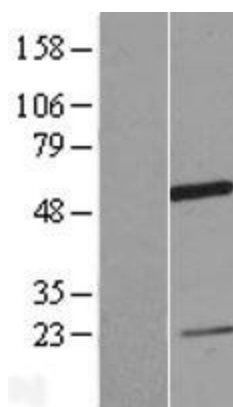
Cytogenetics: 2q21.1

MW: 41.6 kDa

Product images:



Circular map for RC220988



Western blot validation of overexpression lysate (Cat# [LY408511]) using anti-DDK antibody (Cat# [TA50011-100]). Left: Cell lysates from untransfected HEK293T cells; Right: Cell lysates from HEK293T cells transfected with RC220988 using transfection reagent MegaTran 2.0 (Cat# [TT210002]).