

## Product datasheet for RC220979

### OR8K1 (NM\_001002907) Human Tagged ORF Clone

#### Product data:

Product Type:	Expression Plasmids
Product Name:	OR8K1 (NM_001002907) Human Tagged ORF Clone
Tag:	Myc-DDK
Symbol:	OR8K1
Synonyms:	OR8N1P; OR11-182
Mammalian Cell Selection:	Neomycin
Vector:	pCMV6-Entry (PS100001)
E. coli Selection:	Kanamycin (25 ug/mL)
ORF Nucleotide Sequence:	>RC220979 representing NM_001002907 Red=Cloning site Blue=ORF Green=Tags(s)

TTTTGTAATACGACTCACTATAGGGCGGCCGGAATTCGTCGACTGGATCCGGTACCGAGGAGATCTGCC  
GCC**CGGATCGCC**

ATGAATCATGTGGTAAAACACAATCACACGGCAGTGACCAAGGTGACTGAATTTATTCTCATGGGGATTA  
CAGACAACCCCTGGGCTGCAGGCTCCACTGTTGGACTCTTCTCATCATATATCTGGTCACAGTGATAGG  
CAATCTGGGCATGGTTATCTTGACCTACTTGGACTCCAAGCTACACACCCCATGACTTTTTCTTAGA  
CATTTGTCAATCACTGATCTTGGTTACTCCACTGTCATTGCCCGAAGATGTTAGTAAATTCATAGTGC  
ACAAAAACACAATTTCTTACAATTGGTATGCCACTCAGCTAGCATTCTTTGAGATTTTCATCATCTCTGA  
GCTCTTTATTCTATCAGCAATGGCCTATGATCGCTACGTAGCCATCTGTAACCTCTTGTACGTGATC  
ATCATGGCAGAGAAAGTACTTTGGGTGCTGGTAATTGTTCCCTATCTCTATAGCAGTGTGTGCTACTAT  
TTCTCACAAATTAAGTTATTTAAACTGTCCTTCTGTGGCTCAAACATAATCAGCTATTTTTACTGTGACTG  
TATCCCTCTGATGTCCATACTCTGTTCTGACACAAATGAATTAGAATTAATAATTTTGATCTTCTCAGGC  
TGTAATTTGCTCTTCTCCCTCTCAATTGTTCTCATATCTACATGTTTATTCTAGTGCCATTCTCAGAA  
TGAACTCAAGGAAAGGGAGGTACAAAGCCTTCTCCACCTGTAGCTCTCATCTGACAGTGGTGATCATGTT  
CTATGGGACATTGTTATTTATTTACTTGAACCAAGTCCAGTCATACTTTGGCTATTGATAAAATGGCC  
TCAGTGTTTTATACCCTGTTGATTCCTATGCTGAATCCGTTGATCTACAGCCTAAGGAACAAAGAAGTAA  
AAGATGCTCTAAAGAGAACTTTAACCAATCGATTCAAAATTCCTTCCATT

**ACGCGT**ACGCGGCCGCTCGAGCAGAAACTCATCTCAGAAGAGGATCTGGCAGCAATGATATCCTGGATT  
ACAAGGATGACGACGATAAGGTTTAA



[View online »](#)

**Protein Sequence:** >RC220979 representing NM\_001002907  
Red=Cloning site Green=Tags(s)

```
MNHVVKHNHTAVTKVTEFILMGITDNPGLQAPLFGFLFIYLVTVIGNLGMVILTYLDSKLHTPMYFFLR
HLSITDLGYSTVIAPKMLVNFIVHKNTISYNWYATQLAFFEIFIISELILSAMAYDRYVAICKPLLYVI
IMAEKVLWVLI VPYLYSTFVSLFLT IKLFKLSFCGSNIISYFYCDCIPLMSILCSDTNELELIILIFSG
CNLLFSLSIVLISYMFILVAILRMNSRKGRYKAFSTCSSHLTVVIMFYGTLLFIYLPKSSHTLAIDKMA
SVFYTLIPMLNPLIYSLRNKEVKDALKRTLNRFKIPI
```

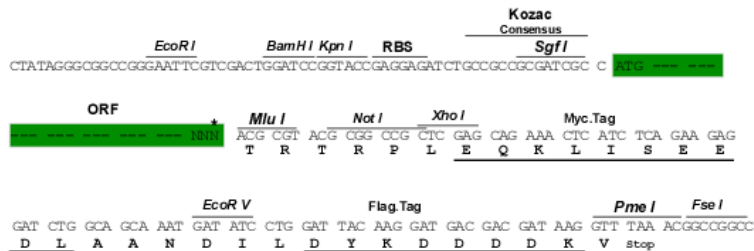
TRTRPLEQKLISEEDLAANDILDYKDDDDKV

**Chromatograms:** [https://cdn.origene.com/chromatograms/mk8001\\_f05.zip](https://cdn.origene.com/chromatograms/mk8001_f05.zip)

**Restriction Sites:** SgfI-MluI

**Cloning Scheme:**

Cloning sites used for ORF Shuttling:



**ACCN:** NM\_001002907

**ORF Size:** 957 bp

**OTI Disclaimer:** The molecular sequence of this clone aligns with the gene accession number as a point of reference only. However, individual transcript sequences of the same gene can differ through naturally occurring variations (e.g. polymorphisms), each with its own valid existence. This clone is substantially in agreement with the reference, but a complete review of all prevailing variants is recommended prior to use. [More info](#)

**OTI Annotation:** This clone was engineered to express the complete ORF with an expression tag. Expression varies depending on the nature of the gene.

**Components:** The ORF clone is ion-exchange column purified and shipped in a 2D barcoded Matrix tube containing 10ug of transfection-ready, dried plasmid DNA (reconstitute with 100 ul of water).

**Reconstitution Method:**

1. Centrifuge at 5,000xg for 5min.
2. Carefully open the tube and add 100ul of sterile water to dissolve the DNA.
3. Close the tube and incubate for 10 minutes at room temperature.
4. Briefly vortex the tube and then do a quick spin (less than 5000xg) to concentrate the liquid at the bottom.
5. Store the suspended plasmid at -20°C. The DNA is stable for at least one year from date of shipping when stored at -20°C.

**RefSeq:** [NM\\_001002907.1](#), [NP\\_001002907.1](#)

**RefSeq Size:** 960 bp

**RefSeq ORF:** 960 bp

**Locus ID:** 390157

**UniProt ID:** [Q8NKG5](#)

**Cytogenetics:** 11q12.1

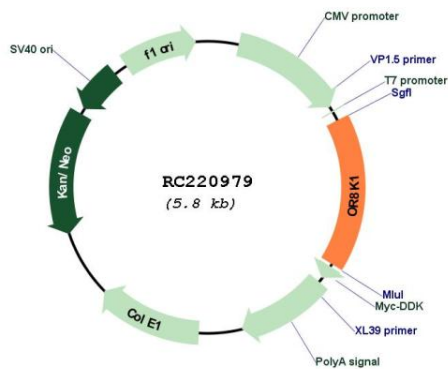
**Protein Families:** Transmembrane

**Protein Pathways:** Olfactory transduction

**MW:** 36.4 kDa

**Gene Summary:** Olfactory receptors interact with odorant molecules in the nose, to initiate a neuronal response that triggers the perception of a smell. The olfactory receptor proteins are members of a large family of G-protein-coupled receptors (GPCR) arising from single coding-exon genes. Olfactory receptors share a 7-transmembrane domain structure with many neurotransmitter and hormone receptors and are responsible for the recognition and G protein-mediated transduction of odorant signals. The olfactory receptor gene family is the largest in the genome. The nomenclature assigned to the olfactory receptor genes and proteins for this organism is independent of other organisms. [provided by RefSeq, Jul 2008]

Product images:



Circular map for RC220979