

Product datasheet for RC220969

FT1A (FUT6) (NM_001040701) Human Tagged ORF Clone

Product data:

Product Type:	Expression Plasmids
Product Name:	FT1A (FUT6) (NM_001040701) Human Tagged ORF Clone
Tag:	Myc-DDK
Symbol:	FT1A
Synonyms:	FCT3A; FT1A; Fuc-TVI; FucT-VI
Mammalian Cell Selection:	Neomycin
Vector:	pCMV6-Entry (PS100001)
E. coli Selection:	Kanamycin (25 ug/mL)
ORF Nucleotide Sequence:	>RC220969 ORF sequence Red=Cloning site Blue=ORF Green=Tags(s)

TTTTGTAATACGACTCACTATAGGGCGGCCGGAATTCGTCGACTGGATCCGGTACCGAGGAGATCTGCC
GCC**CGATCGCC**

ATGGATCCCTGGGCCCGCCAAGCCACAGTGGTCGTGGCGTGCTGTCTGACCACGCTGCTGTTTCACC
TGCTGATGGCTGTGTGTTTCTTCTCCTATCTGCGTGTGTCTCAAGACGATCCCACTGTGTACCCTAATGG
GTCCCGCTTCCCAGACAGCACAGGGACCCCGCCCACTCCATCCCCTGATCCTGCTGTGGACGTGGCCT
TTTAAACAACCCATAGCTCTGCCCGCTGCTCAGAGATGGTGCCTGGCACGGCTGACTGCAACATCACTG
CCGACCGCAAGGTGTATCCACAGGCAGACGCGGTATCGTGCACCACCGAGAGGTCATGTACAACCCAG
TGCCAGCTCCCAGCTCCTCGAGGCGGCAGGGGACGATGGATCTGGTTCAGCATGGAGTCCCAAGC
CACTGCTGGCAGCTGAAAGCCATGGACGGATACTTCAATCTCACCATGTCTACCGCAGCGACTCCGACA
TCTTACGCCCTACGGCTGGCTGGAGCCGTGGTCCGGCCAGCCTGCCACCCACCGCTCAACCTCTCGGC
CAAGACCGAGCTGGTGGCCTGGGCGAGTGTCCAAGTGGGGCCAACTCCGCCAGGGTGGCTACTACCG
AGCCTGCAGGCCATCTCAAGGTGGACGTGTACGGACGCTCCACAAGCCCTGCCAGGGAACCATGA
TGGAGACGCTGTCCCGTACAAGTTCTATCTGGCCTTCAAGAATCCTTGACCCCGACTACATCACCGA
GAAGCTGTGGAGGAACGCCCTGGAGGCTGGCCGTGCCGTGGTGTGGGCCCCAGCAGAAGCAACTAC
GAGAGTTCTGCCGCCGACGCTTCCACAGTGGACGACTCCAGAGCCCAAGGACCTGGCCCGGT
ACCTGCAGGAGCTGGACAAGGACCAGCCGCTACCTGAGTACTTTGCTGGCGGAGACGCTGCGGCC
TCGCTCCTTACGCTGGGCACTCGTTTTCTGCAAGGCTGCTGGAAACTGCAGGAGGAATCCAGGTACCAG
ACACGCGCATAGCGCTTGGTTACCC

ACGGTACGCGGCCGCTCGAGCAGAAACTCATCTCAGAAGAGGATCTGGCAGCAATGATATCCTGGATT
ACAAGGATGACGACGATAAGGTTAA



[View online »](#)

Protein Sequence: >RC220969 protein sequence
Red=Cloning site Green=Tags(s)

MDPLGPAKPQWSWRCLTLLFHLLMAVCFSSYLKRVSDPTVYPNGSRFPDSTGTPAHSIPLILLWTWP
 FNKPIALPRCSEMVPGTADCNITADRVYPOADAVIVHHREVMYNPSAQLPRSSRRQGQRWIWFSMESPS
 HCWQLKAMDGYFNLTMSYRSDSDIFTPYGWLEPWSGQPAHPPLNLSAKTELVAWAVSNWGPNSARVRYQ
 SLQAHLKVDVYGRSHKPLPQGTMMETLSRYKFYLAFKNSLHPDYITEKLWRNALEAWAVPVVLGPSRSNY
 ERFLPPDAFIHVDDFQSPKDLARYLQELDKDHARYLSYFRWRETLRPRFSWALAFCKACWKLQEESRYQ
 TRGIAAWFT

TRTRPLEQKLISEEDLAANDILDYKDDDDKV

Chromatograms: https://cdn.origene.com/chromatograms/mk6550_b12.zip

Restriction Sites: SgfI-MluI

Cloning Scheme:



ACCN: NM_001040701

ORF Size: 1077 bp

OTI Disclaimer: The molecular sequence of this clone aligns with the gene accession number as a point of reference only. However, individual transcript sequences of the same gene can differ through naturally occurring variations (e.g. polymorphisms), each with its own valid existence. This clone is substantially in agreement with the reference, but a complete review of all prevailing variants is recommended prior to use. [More info](#)

OTI Annotation: This clone was engineered to express the complete ORF with an expression tag. Expression varies depending on the nature of the gene.

Components: The ORF clone is ion-exchange column purified and shipped in a 2D barcoded Matrix tube containing 10ug of transfection-ready, dried plasmid DNA (reconstitute with 100 ul of water).

Reconstitution Method:

1. Centrifuge at 5,000xg for 5min.
2. Carefully open the tube and add 100ul of sterile water to dissolve the DNA.
3. Close the tube and incubate for 10 minutes at room temperature.
4. Briefly vortex the tube and then do a quick spin (less than 5000xg) to concentrate the liquid at the bottom.
5. Store the suspended plasmid at -20°C. The DNA is stable for at least one year from date of shipping when stored at -20°C.

RefSeq: [NM_001040701.1](#), [NP_001035791.1](#)

RefSeq Size: 3009 bp

RefSeq ORF: 1080 bp

Locus ID: 2528

UniProt ID: [P51993](#)

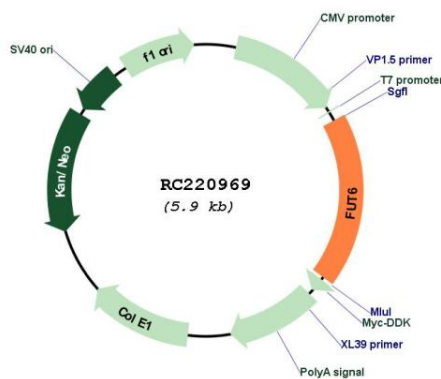
Cytogenetics: 19p13.3

Protein Pathways: Glycosphingolipid biosynthesis - lacto and neolacto series, Metabolic pathways

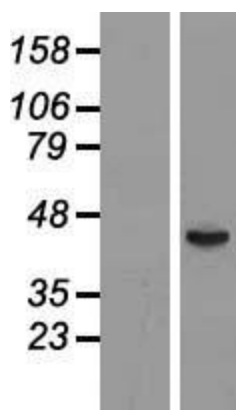
MW: 41.9 kDa

Gene Summary: The protein encoded by this gene is a Golgi stack membrane protein that is involved in the creation of sialyl-Lewis X, an E-selectin ligand. Mutations in this gene are a cause of fucosyltransferase-6 deficiency. Two transcript variants encoding the same protein have been found for this gene. [provided by RefSeq, Jul 2008]

Product images:



Circular map for RC220969



Western blot validation of overexpression lysate (Cat# [LY420745]) using anti-DDK antibody (Cat# [TA50011-100]). Left: Cell lysates from untransfected HEK293T cells; Right: Cell lysates from HEK293T cells transfected with RC220969 using transfection reagent MegaTran 2.0 (Cat# [TT210002]).