

Product datasheet for **RC220967**

GABA A Receptor beta 3 (GABRB3) (NM_021912) Human Tagged ORF Clone

Product data:

Product Type:	Expression Plasmids
Product Name:	GABA A Receptor beta 3 (GABRB3) (NM_021912) Human Tagged ORF Clone
Tag:	Myc-DDK
Symbol:	GABA A Receptor beta 3
Synonyms:	DEE43; ECA5; EIEE43
Mammalian Cell Selection:	Neomycin
Vector:	pCMV6-Entry (PS100001)
E. coli Selection:	Kanamycin (25 ug/mL)



[View online »](#)

ORF Nucleotide Sequence:

>RC220967 representing NM_021912
 Red=Cloning site Blue=ORF Green=Tags(s)

TTTTGTAATACGACTCACTATAGGGCGGCCGGAATTCGTCGACTGGATCCGGTACCGAGGAGATCTGCC
 GCC**CGGATCGCC**

ATGTGCTCCGGGCTCCTGGAGCTCTGCTGCCATCTGGCTCTCCTGGACCTGGGGACTCGAGGCTCTG
 AGCCTCGCAGTGTGAACGATCCCGGAACATGTCTTTGTGAAGGAGACGGTGGACAAGCTTTGAAAGG
 CTACGACATTCGCCTAAGACCCGACTTCGGGGTCCCCGGTCTGCGTGGGGATGAACATCGACATCGCC
 AGCATCGACATGGTTCCGAAGTCAACATGGATTATACCTTAACCATGTATTTCAACAATATTGGAGAG
 ATAAAAGGCTCGCCTATTCTGGGATCCCTCTCAACCTCACGCTTGACAATCGAGTGGCTGACCAGCTATG
 GGTGCCGACACATATTTCTAAATGACAAAAAGTCATTTGTGCATGGAGTGACAGTGAAAAACCGCATG
 ATCCGTCTTACCCTGATGGGACAGTGTGTATGGGCTCAGAATCACCACGACAGCAGCATGCATGATGG
 ACCTCAGGAGATACCCCTGGACGAGCAGAAGTCACTCTGGAATTGAAAGCTATGGCTACACCACGGA
 TGACATTGAGTTTACTGGCGAGGCGGGACAAGGCTGTACCGGAGTGGAAAGGATTGAGCTCCCGCAG
 TTCTCCATCGTGGAGCACCGTCTGGTCTCGAGGAATGTTGTCTTCCGCACAGGTGCCTATCTCGACTGT
 CACTGAGCTTTCGGTTGAGAGGAACATTGGATACTTCACTTCTCAGACTTATATGCCCTCTATACTGAT
 AACGATTCTGTCGTGGGTGTCCTTCTGGATCAATTATGATGCATCTGCTGCTAGAGTTGCCCTCGGGATC
 ACAACTGTGCTGACAATGACAACCATCAACACCCACCTTCGGGAGACCTTGCCCAAAATCCCCTATGTCA
 AAGCCATTGACATGTACCTTATGGGCTGCTTCTGCTTTGTGTTCTGGCCCTTCTGGAGTATGCCTTTGT
 CAACTACATTTCTTTGGAAGAGGCCCTCAAAGGCAGAAGAAGCTTGCAAAAAGACAGCCAAGGCAAAG
 AATGACCGTTCAAAGAGCGAAAGCAACCGGTGGATGCTCATGGAATATTCTGTTGACATCGCTGGAAG
 TTCACAATGAAATGAATGAGGTCTCAGGCGGATTGGCGATAACCAGGAATTCAGCAATATCCTTTGACAG
 CTCAGGAATCCAGTACAGGAAACAGAGCATGCCTCGAGAAGGGCATGGGCGATTCTGGGGACAGAAAGC
 CTCCCGACAAGAAGACCATCTACGGAGGAGTCTTACAGCTCAAAATTAATAACCTGATCTAACCG
 ATGTGAATGCCATAGACAGATGGTCCAGGATCGTGTTCATTACTTTTTCTTTTTCACTTAGTTTA
 CTGGCTGACTATGTTAAC

ACGCGTACGCGGCCGCTCGAGCAGAAACTCATCTCAGAAGAGGATCTGGCAGCAATGATATCCTGGATT
 ACAAGGATGACGACGATAAGGTTTAA

Protein Sequence:

>RC220967 representing NM_021912
 Red=Cloning site Green=Tags(s)

MCSGLELELLPIWLSWTLGTRGSEPRSVNDPGNMSFVKETVDKLLKGYDIRLRPDFGGPPVCGMNI
 SIDMVSEVNMDYTLTMYFQQYWRDKRLAYSGIPLNLTLDNRVADQLWVPDITYFLNDKKSFVHGVT
 VKNRMIRLHPDGTVLYGLRITTTAACMMDLRRYPLDEQNCTLEIESYGYTTDDIEFYWRGGDKAVT
 GVERIELPQFSIVEHRLVSRNVFATGAYPRLSLSFRLKRNIGYFILQTYMPSILITILSWVSWIN
 YDASAARVALGITTVLTMTTINTHLRETLPKIPYVKAIDMYLMGCFVFLALLEYAFVNYIFFGRG
 PQRQKLAEKTAKAKNDRSKSESNRVDAGNILLTSLEVHNEMNEVSGGIGDTRNSAISFDNSGI
 QYRKQSMPREGHGRFLGDRSLPHKHTLRRRSSQLKIKIPDLTDVNAIDRWSRIVFPFTFSLFNL
 VYWLYVYN

TRTRPLEQKLISEEDLAANDILDYKDDDDKV

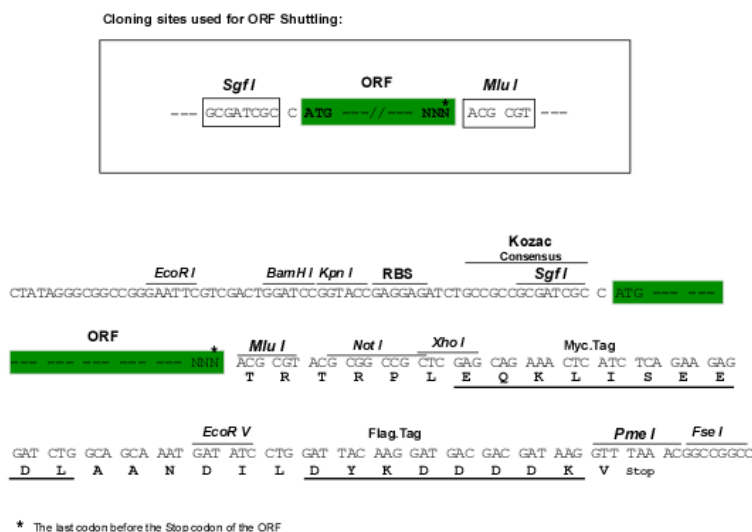
Chromatograms:

https://cdn.origene.com/chromatograms/mk6094_b04.zip

Restriction Sites:

Sgfl-MluI

Cloning Scheme:



ACCN: NM_021912

ORF Size: 1419 bp

OTI Disclaimer: The molecular sequence of this clone aligns with the gene accession number as a point of reference only. However, individual transcript sequences of the same gene can differ through naturally occurring variations (e.g. polymorphisms), each with its own valid existence. This clone is substantially in agreement with the reference, but a complete review of all prevailing variants is recommended prior to use. [More info](#)

OTI Annotation: This clone was engineered to express the complete ORF with an expression tag. Expression varies depending on the nature of the gene.

Components: The ORF clone is ion-exchange column purified and shipped in a 2D barcoded Matrix tube containing 10ug of transfection-ready, dried plasmid DNA (reconstitute with 100 ul of water).

Reconstitution Method:

1. Centrifuge at 5,000xg for 5min.
2. Carefully open the tube and add 100ul of sterile water to dissolve the DNA.
3. Close the tube and incubate for 10 minutes at room temperature.
4. Briefly vortex the tube and then do a quick spin (less than 5000xg) to concentrate the liquid at the bottom.
5. Store the suspended plasmid at -20°C. The DNA is stable for at least one year from date of shipping when stored at -20°C.

RefSeq: [NM_021912.5](#)

RefSeq Size: 2970 bp

RefSeq ORF: 1422 bp

Locus ID: 2562

UniProt ID: [P28472](#)

Cytogenetics: 15q12

Domains: Neur_chan_memb, Neur_chan_LBD

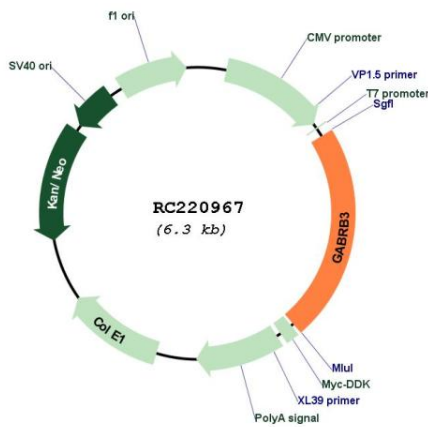
Protein Families: Druggable Genome, Ion Channels: Cys-loop Receptors, Transmembrane

Protein Pathways: Neuroactive ligand-receptor interaction

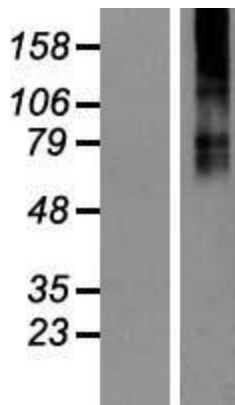
MW: 51.6 kDa

Gene Summary: This gene encodes a member of the ligand-gated ionic channel family. The encoded protein is one the subunits of a multi-subunit chloride channel that serves as the receptor for gamma-aminobutyric acid, a major inhibitory neurotransmitter of the mammalian nervous system. This gene is located on the long arm of chromosome 15 in a cluster with two other genes encoding related subunits of the family. This gene may be associated with the pathogenesis of several disorders including Angelman syndrome, Prader-Willi syndrome, nonsyndromic orofacial clefts, epilepsy and autism. Alternatively spliced transcript variants encoding distinct isoforms have been described. [provided by RefSeq, Jul 2013]

Product images:



Circular map for RC220967



Western blot validation of overexpression lysate (Cat# [LY411882]) using anti-DDK antibody (Cat# [TA50011-100]). Left: Cell lysates from untransfected HEK293T cells; Right: Cell lysates from HEK293T cells transfected with RC220967 using transfection reagent MegaTran 2.0 (Cat# [TT210002]).