

Product datasheet for **RC220965**

BEX1 (NM_018476) Human Tagged ORF Clone

Product data:

Product Type: Expression Plasmids
Product Name: BEX1 (NM_018476) Human Tagged ORF Clone
Tag: Myc-DDK
Symbol: BEX1
Synonyms: BEX2; HBEX2; HGR74-h
Mammalian Cell Selection: Neomycin
Vector: pCMV6-Entry (PS100001)
E. coli Selection: Kanamycin (25 ug/mL)
ORF Nucleotide Sequence: >RC220965 ORF sequence
Red=Cloning site Blue=ORF Green=Tags(s)

TTTTGTAATACGACTCACTATAGGGCGCCGGAATTCGTCGACTGGATCCGGTACCGAGGAGATCTGCC
GCC**CGATCGCC**

ATGGAGTCCAAGAGAAACGAGCAGTAAACAGTCTCAGCATGGAAAATGCCAACCAAGAAAATGAAGAAA
AGGAGCAAAGTTGCTAATAAAGGGGAGCCCTTGGCCCTCCCTTTGGATGCTGGTGAATACTGTGTGCCTAG
AGGAAATCGTAGGCGTTCCGCGTTAGGCAGCCCATCTGCAGTATAGATGGGATATGATGCATAGGCTT
GGAGAACCACAGGCAAGGATGAGAGAAGAGAATATGGAAAGGATTGGGGAGGAGGTGAGACAGCTGATGG
AAAAGCTGAGGGAAAAGCAGTTGAGTCATAGTCTGCGGGCAGTCAGCACTGACCCCTCACCATGACCA
TCATGATGAGTTTGCCTTATGCC

ACGCGTACGCGGCCGCTCGAGCAGAACTCATCTCAGAAGAGGATCTGGCAGCAAATGATATCCTGGATT
ACAAGGATGACGACGATAAGGTTTAA

Protein Sequence: >RC220965 protein sequence
Red=Cloning site Green=Tags(s)
MESKEKRAVNSLSMENANQENEEKEQVANKGEPLALPLDAGEYCVPRGNRRFRVRQPILQYRWDMMHRL
GEPQARMREENMERIGEEVRLMEKLRKQLSHSLRAVSTDPHHDHDEFCLMP

TRTRPLEQKLISEEDLAANDILDYKDDDDKV

Chromatograms: https://cdn.origene.com/chromatograms/mk6467_a07.zip

Restriction Sites: SgfI-MluI



[View online »](#)

Cloning Scheme:


ACCN: NM_018476

ORF Size: 375 bp

OTI Disclaimer: The molecular sequence of this clone aligns with the gene accession number as a point of reference only. However, individual transcript sequences of the same gene can differ through naturally occurring variations (e.g. polymorphisms), each with its own valid existence. This clone is substantially in agreement with the reference, but a complete review of all prevailing variants is recommended prior to use. [More info](#)

OTI Annotation: This clone was engineered to express the complete ORF with an expression tag. Expression varies depending on the nature of the gene.

Components: The ORF clone is ion-exchange column purified and shipped in a 2D barcoded Matrix tube containing 10ug of transfection-ready, dried plasmid DNA (reconstitute with 100 ul of water).

Reconstitution Method:

1. Centrifuge at 5,000xg for 5min.
2. Carefully open the tube and add 100ul of sterile water to dissolve the DNA.
3. Close the tube and incubate for 10 minutes at room temperature.
4. Briefly vortex the tube and then do a quick spin (less than 5000xg) to concentrate the liquid at the bottom.
5. Store the suspended plasmid at -20°C. The DNA is stable for at least one year from date of shipping when stored at -20°C.

RefSeq: [NM_018476.4](#)

RefSeq Size: 862 bp

RefSeq ORF: 378 bp

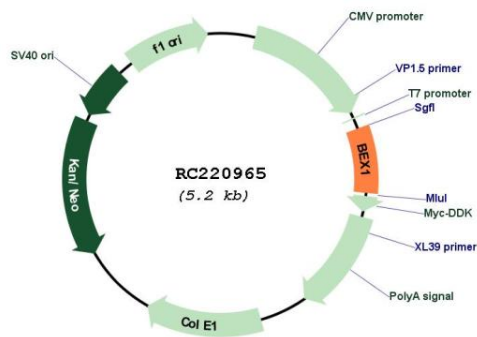
Locus ID: 55859

UniProt ID: [Q9HBH7](#)

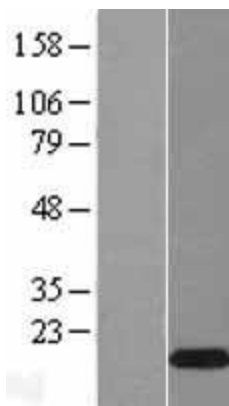
Cytogenetics: Xq22
Domains: BEX
MW: 14.9 kDa

Gene Summary: Signaling adapter molecule involved in p75NTR/NGFR signaling. Plays a role in cell cycle progression and neuronal differentiation. Inhibits neuronal differentiation in response to nerve growth factor (NGF). May act as a link between the cell cycle and neurotrophic factor signaling, possibly by functioning as an upstream modulator of receptor signaling, coordinating biological responses to external signals with internal cellular states (By similarity).[UniProtKB/Swiss-Prot Function]

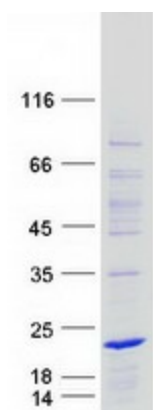
Product images:



Circular map for RC220965



Western blot validation of overexpression lysate (Cat# [LY413052]) using anti-DDK antibody (Cat# [TA50011-100]). Left: Cell lysates from untransfected HEK293T cells; Right: Cell lysates from HEK293T cells transfected with RC220965 using transfection reagent MegaTran 2.0 (Cat# [TT210002]).



Coomassie blue staining of purified BEX1 protein (Cat# [TP320965]). The protein was produced from HEK293T cells transfected with BEX1 cDNA clone (Cat# RC220965) using MegaTran 2.0 (Cat# [TT210002]).