

Product datasheet for **RC220964**

Zinc transporter 8 (SLC30A8) (NM_173851) Human Tagged ORF Clone

Product data:

Product Type:	Expression Plasmids
Product Name:	Zinc transporter 8 (SLC30A8) (NM_173851) Human Tagged ORF Clone
Tag:	Myc-DDK
Symbol:	Zinc transporter 8
Synonyms:	ZnT-8; ZNT8
Mammalian Cell Selection:	Neomycin
Vector:	pCMV6-Entry (PS100001)
E. coli Selection:	Kanamycin (25 ug/mL)
ORF Nucleotide Sequence:	>RC220964 representing NM_173851 Red=Cloning site Blue=ORF Green=Tags(s)

TTTTGTAATACGACTCACTATAGGGCGGCCGGAATTCGTCGACTGGATCCGGTACCGAGGAGATCTGCC
GCC**CGATCGCC**

ATGGAGTTTCTTGAAAGAACGTATCTTGTGAATGATAAAGCTGCCAAGATGTATGCTTTCACACTAGAAA
GTGTGGAACCTCAACAGAAACCGGTGAATAAGATCAGTGTCCCAGAGAGAGACCAGAGGAGCTGGAGTC
AGGAGGCATGTACCACTGCCACAGTGGCTCCAAGCCACAGAAAAGGGGCGAATGAGTACGCCTATGCC
AAGTGGAACTCTGTTCTGCTTACGAATATGCTTCATTTTCATGATTGCAGAGGTCGTGGTGGGCACA
TTGCTGGGAGTCTTGCTGTTGTACAGATGCTGCCACCTCTTAATTGACCTGACCAGTTTCTGCTCAG
TCTCTTCCCTGTGGTGTGCATCGAAGCTCCCTCTAAGCGGCTGACATTTGGATGGCACCAGCAGAG
ATCCTTGGTGCCCTGCTCCTATCCTGTGCATCTGGTGGTACTGGCGTGTAGTGTACCTGGCATGTG
AGCGCCTGCTGTATCCTGATTACCAGATCCAGGCGACTGTGATGATCATCGTTTCCAGCTGCGCAGTGGC
GGCCAACATTGTACTAAGTGTGGTTTTGCACCAGAGATGCCTTGGCCACAATCACAAGGAAGTACAAGCC
AATGCCAGCGTCAGAGCTGCTTTTGTGCATGCCCTTGGAGATCTATTTACAGATATCAGTGTGCTAATTA
GTGCACCTATTATCTACTTTAAGCCAGAGTATAAAATAGCCGACCAATCTGCACATTCATCTTTCCAT
CCTGGTCTTGGCCAGCACCATCACTATCTTAAAGACTTCTCCATCTTACTCATGGAAGGTGTGCCAAAG
AGCCTGAATTACAGTGGTGTGAAAGAGCTTATTTAGCAGTCGACGGGGTGTCTGTGTCACAGCCTGC
ACATCTGGTCTCTAACAATGAATCAAGTAATTCTCTCAGCTCATGTTGCTACAGCAGCCAGCCGGGACAG
CCAAGTGGTTCGAGAGAAATTGCTAAAGCCCTTAGCAAAAGCTTTACGATGCACTCACTCACCATTGAC
ATGGAATCTCCAGTTGACCAGGACCCCGACTGCCTTTTCTGTGAAGACCCTGTGAC

ACGCGTACGCGGCCGCTCGAGCAGAACTCATCTCAGAAGAGGATCTGGCAGCAATGATATCCTGGATT
ACAAGGATGACGACGATAAGGTTTAA



[View online >](#)

Protein Sequence: >RC220964 representing NM_173851
Red=Cloning site Green=Tags(s)

MEFLERTYL VNDKAAKMYAFTLESVELQQKPVNKDQCPRERPEELES GGMVYHCHSGSKPTEKGANEYAYA
 KWKLCASAICFIFMIAEVVGGHIAGSLAVVTDAAHLLIDLTSFLLSLFSLWLSKPPSKRLTFGWHRAE
 ILGALLSILCIWVVTGVLVYLACERLLYDPYQIQATVMIIVSSCAVAANI VLTVVLHQ RCLGHNHKEVQA
 NASVRAAFVHALGDLFQSI SVLISALIIYFKPEYKIADP ICTFIF SILVLASTITILKDFSILLMEGVPK
 SLNYSGVKELILAVDGVLSVHSLHIWLSLTMNQVILSAHVATAASRDSQVVRREIAKALSKSFTMHS LTIQ
 MESPVDQDPDCLFCEDPCD

TRTRPLEQKLISEEDLAANDILDYKDDDDKV

Chromatograms: https://cdn.origene.com/chromatograms/mg3402_e07.zip

Restriction Sites: SgfI-MluI

Cloning Scheme:



* The last codon before the Stop codon of the ORF

ACCN: NM_173851

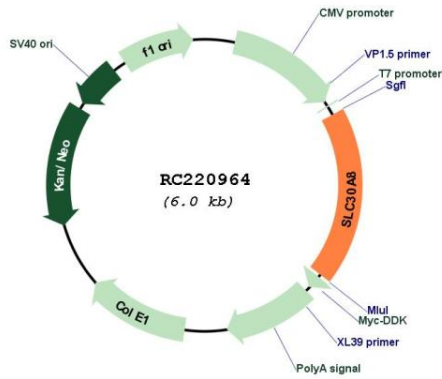
ORF Size: 1107 bp

OTI Disclaimer: Due to the inherent nature of this plasmid, standard methods to replicate additional amounts of DNA in E. coli are highly likely to result in mutations and/or rearrangements. Therefore, OriGene does not guarantee the capability to replicate this plasmid DNA. Additional amounts of DNA can be purchased from OriGene with batch-specific, full-sequence verification at a reduced cost. Please contact our customer care team at custsupport@origene.com or by calling 301.340.3188 option 3 for pricing and delivery.

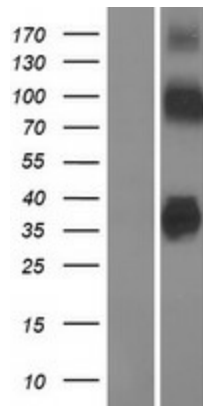
The molecular sequence of this clone aligns with the gene accession number as a point of reference only. However, individual transcript sequences of the same gene can differ through naturally occurring variations (e.g. polymorphisms), each with its own valid existence. This clone is substantially in agreement with the reference, but a complete review of all prevailing variants is recommended prior to use. [More info](#)

OTI Annotation:	This clone was engineered to express the complete ORF with an expression tag. Expression varies depending on the nature of the gene.
Components:	The ORF clone is ion-exchange column purified and shipped in a 2D barcoded Matrix tube containing 10ug of transfection-ready, dried plasmid DNA (reconstitute with 100 ul of water).
Reconstitution Method:	<ol style="list-style-type: none">1. Centrifuge at 5,000xg for 5min.2. Carefully open the tube and add 100ul of sterile water to dissolve the DNA.3. Close the tube and incubate for 10 minutes at room temperature.4. Briefly vortex the tube and then do a quick spin (less than 5000xg) to concentrate the liquid at the bottom.5. Store the suspended plasmid at -20°C. The DNA is stable for at least one year from date of shipping when stored at -20°C.
RefSeq:	NM_173851.3
RefSeq Size:	5373 bp
RefSeq ORF:	1110 bp
Locus ID:	169026
UniProt ID:	Q8IWU4
Cytogenetics:	8q24.11
Protein Families:	Transmembrane
MW:	40.6 kDa
Gene Summary:	The protein encoded by this gene is a zinc efflux transporter involved in the accumulation of zinc in intracellular vesicles. This gene is expressed at a high level only in the pancreas, particularly in islets of Langerhans. The encoded protein colocalizes with insulin in the secretory pathway granules of the insulin-secreting INS-1 cells. Allelic variants of this gene exist that confer susceptibility to diabetes mellitus, noninsulin-dependent (NIDDM). Several transcript variants encoding different isoforms have been found for this gene.[provided by RefSeq, Mar 2010]

Product images:



Circular map for RC220964



Western blot validation of overexpression lysate (Cat# [LY406320]) using anti-DDK antibody (Cat# [TA50011-100]). Left: Cell lysates from untransfected HEK293T cells; Right: Cell lysates from HEK293T cells transfected with RC220964 using transfection reagent MegaTran 2.0 (Cat# [TT210002]).