

Product datasheet for RC220961

BUB3 (NM_001007793) Human Tagged ORF Clone

Product data:

Product Type:	Expression Plasmids
Product Name:	BUB3 (NM_001007793) Human Tagged ORF Clone
Tag:	Myc-DDK
Symbol:	BUB3
Synonyms:	BUB3L; hBUB3
Mammalian Cell Selection:	Neomycin
Vector:	pCMV6-Entry (PS100001)
E. coli Selection:	Kanamycin (25 ug/mL)
ORF Nucleotide Sequence:	>NM_001007793 ORF sequence, RC220961 may differ due to SNPs. Blue=ORF Red=Cloning site Green=Tag(s)

```
GCTCGTTT TAGTGAACCGTCAGAATTTTGT AATACGACTCACTATAGGGCGCCGGGAATTCGTCGACTG
GATCCGGTACCGAGGAGATCTGCCGCC CGCATCGCC
ATGACCGGTTCTAACGAGTTCAAGCTGAACCGCCACCCGAGGATGGCATCTCCTCCGTGAAGTTCAGC
CCCAACACCTCCCAGTTCCTGCTGTCTCCTCCTGGGACACGTCCTGCGTCTCTACGATGTGCCGGCC
AACTCCATGCGGCTCAAGTACCAGCACACCGGCGCCGCTCCTGGACTGCGCCTTCTACGATCCAACGCAT
GCCTGGAGTGGAGGACTAGATCATCAATTGAAAATGCATGATTTGAACACTGATCAAGAAAATCTTGTT
GGGACCCATGATGCCCTATCAGATGTGTTGAATACTGTCCAGAAGTGAATGTGATGGTCACTGGAAGT
TGGGATCAGACAGTTAACTGTGGGATCCAGAACTCCTTGTAATGCTGGGACCTTCTCTCAGCCTGAA
AAGGTATATACCTCTCAGTGTCTGGAGACCGGCTGATTGTGGGAACAGCAGGCCGAGAGTGTGGTG
TGGGACTTACGGAACATGGGTTACGTGCAGCAGCGCAGGGAGTCCAGCCTGAAATACCAGACTCGCTGC
ATACGAGCGTTTCCAAACAAGCAGGGTTATGTATTAAGCTCTATTGAAGGCCGAGTGGCAGTTGAGTAT
TTGGACCAAGCCCTGAGGTACAGAAGAAGAAGTATGCCTTCAAATGTCACAGACTAAAAGAAAATAAT
ATTGAGCAGATTTACCCAGTCAATGCCATTTCTTTTCACAATATCCACAATACATTTGCCACAGGTGGT
TCTGATGGCTTTGTAATATTTGGGATCCATTTAACAAAAAGCGACTGTGCCAATCCATCGGTACCCC
ACGAGCATCGCATCACTTGCCCTCAGTAATGATGGGACTACGCTTGCAATAGCGTCATCATATATGTAT
GAAATGGATGACACAGAACATCCTGAAGATGGTATCTTCATTGCGCAAGTGACAGATGCAGAAAACAAA
CCCAAGTCCACC
ACGCGTACGCGGCCGCTCGAGCAGAAACTCATCTCAGAAGAGGATCTGGCAGCAAATGATATCCTGGAT
TACAAGGATGACGACGATAAGGTTTAAACGGCCGGC
```



[View online »](#)

Protein Sequence: >Peptide sequence encoded by RC220961
 Blue=ORF Red=Cloning site Green=Tag(s)

MTGSNEFKLNQPPEDGISSVKFSPNTSQFLLVSSWDTSVRLYDVPANSMRLKYQHTGAVLDCAFYDPTH
 AWSGGLDHQLKMHDNLNDQENLVGTHDAPIRCVEYCPEVNMVMTGSWDQTVKLWDPRTPCNAGTFSQPE
 KYYTLSVSGDRLIVGTAGRRVLVWDLRNMGYVQQRRESSLKYQTRCIRAFPNKQGYVLSIEGRVAVEY
 LDPSPEVQKKKYAFKCHRLKENNIEQIYPVNAISFHNIHNTFATGGSDGFVNIWDPFNKKRLCQFHRYP
 TSIASLAFSNDGTTLAIASSYMEYEMDDTEHPEDGIFIRQVTDAAETKPKST
 TRTRPLEQKLISEEDLAANDILDYKDDDDKV

Recombinant protein using RC220961 also available, [TP320961](#)

Chromatograms: https://cdn.origene.com/chromatograms/mk6080_a03.zip

Restriction Sites: SgfI-MluI

Cloning Scheme:



* The last codon before the Stop codon of the ORF

ACCN: NM_001007793

ORF Size: 978 bp

OTI Disclaimer: The molecular sequence of this clone aligns with the gene accession number as a point of reference only. However, individual transcript sequences of the same gene can differ through naturally occurring variations (e.g. polymorphisms), each with its own valid existence. This clone is substantially in agreement with the reference, but a complete review of all prevailing variants is recommended prior to use. [More info](#)

OTI Annotation: This clone was engineered to express the complete ORF with an expression tag. Expression varies depending on the nature of the gene.

Components: The ORF clone is ion-exchange column purified and shipped in a 2D barcoded Matrix tube containing 10ug of transfection-ready, dried plasmid DNA (reconstitute with 100 ul of water).

Reconstitution Method:

1. Centrifuge at 5,000xg for 5min.
2. Carefully open the tube and add 100ul of sterile water to dissolve the DNA.
3. Close the tube and incubate for 10 minutes at room temperature.
4. Briefly vortex the tube and then do a quick spin (less than 5000xg) to concentrate the liquid at the bottom.
5. Store the suspended plasmid at -20°C. The DNA is stable for at least one year from date of shipping when stored at -20°C.

RefSeq: [NM_001007793.3](#)

RefSeq Size: 1374 bp

RefSeq ORF: 981 bp

Locus ID: 9184

UniProt ID: [O43684](#)

Cytogenetics: 10q26.13

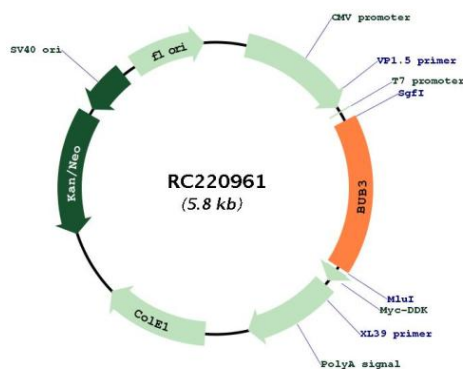
Protein Families: Druggable Genome

Protein Pathways: Cell cycle

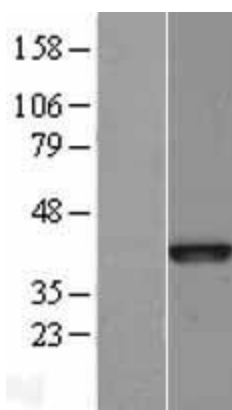
MW: 37 kDa

Gene Summary: This gene encodes a protein involved in spindle checkpoint function. The encoded protein contains four WD repeat domains and has sequence similarity with the yeast BUB3 protein. Alternate transcriptional splice variants, encoding different isoforms, have been characterized. [provided by RefSeq, Jul 2008]

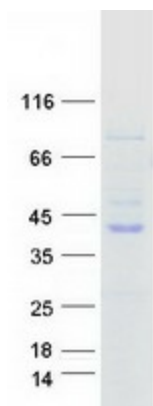
Product images:



Circular map for RC220961



Western blot validation of overexpression lysate (Cat# [LY400384]) using anti-DDK antibody (Cat# [TA50011-100]). Left: Cell lysates from untransfected HEK293T cells; Right: Cell lysates from HEK293T cells transfected with RC220961 using transfection reagent MegaTran 2.0 (Cat# [TT210002]).



Coomassie blue staining of purified BUB3 protein (Cat# [TP320961]). The protein was produced from HEK293T cells transfected with BUB3 cDNA clone (Cat# RC220961) using MegaTran 2.0 (Cat# [TT210002]).