

Product datasheet for **RC220960**

NUMB (NM_001005743) Human Tagged ORF Clone

Product data:

Product Type:	Expression Plasmids
Product Name:	NUMB (NM_001005743) Human Tagged ORF Clone
Tag:	Myc-DDK
Symbol:	NUMB
Synonyms:	C14orf41; c14_5527; S171
Mammalian Cell Selection:	Neomycin
Vector:	pCMV6-Entry (PS100001)
E. coli Selection:	Kanamycin (25 ug/mL)



[View online »](#)

**ORF Nucleotide
Sequence:**

>RC220960 representing NM_001005743
 Red=Cloning site Blue=ORF Green=Tags(s)

TTTTGTAATACGACTCACTATAGGGCGGCCGGAATTCGTCGACTGGATCCGGTACCGAGGAGATCTGCC
 GCC**CGGATCGCC**

ATGAACAAATTACGGCAAAGTTTTAGGAGAAAGAAGGATGTTTATGTTCCAGAGGCCAGTCGTCCACATC
 AGTGGCAGACAGATGAAGAAGGCGTTTCGCACCGGAAAATGTAGCTTCCCGGTTAAGTACCTTGCCATGT
 AGAAGTTGATGAATCAAGAGGAATGCACATCTGTGAAGATGCTGTAAAAAGATTGAAAGCTGAAAGGAAG
 TTCTTCAAAGGCTTCTTTGGAAAACTGGAAAGAAAGCAGTTAAAGCAGTTCTGTGGGTCTCAGCAGATG
 GACTCAGAGTTGTGGATGAAAAACTAAGGACCTCATAGTTGACCAGACGATAGAGAAAGTTTCTTCTG
 TGCCCCAGACAGGAACCTTGTAGAGCCTTTTCTACATATGCCGTGATGCCACCACTCGTCGTGGATC
 TGTCACTGCTTCAAGGACACAGGTGAAAGGTTGAGCCATGCAGTAGGCTGTGCTTTTGCAG
 CCTGTTTAGAGCGCAAGCAGAAGCGGGAGAAGGAATGTGGAGTGACTGCTACTTTTGTGCTAGTCGGAC
 CACTTTTACAAGAGAAGGATCATTCCGTGTCACAACAGCCACTGAACAAGCAAAAAGAGAGGAGATCATG
 AAACAAATGCAAGATGCCAAGAAAGCTGAAACAGATAAGATAGTCGTTGGTTTCATCAGTTGCCCTGGCA
 ACACTGCCCATCCCATCCTCTCCACCTCTCCTACTTCTGATGCCACGACCTCTCTGGAGATGAACAA
 TCCTCATGCCATCCCACGCCGATGCTCCAATTGAACAGCTTGCTCGCCAAGGCTCTTCCGAGGTTTT
 CCTGCTCTTAGCCAGAAGATGTCACCCTTTAAACGCCAATATCCCTACGCATCAATGAGTTGCCTTCCA
 CTATGCAGAGGAAGACTGATTTCCCATTAATAATGCAGTGCCAGAAGTAGAAGGGGAGGCAGAGAGCAT
 CAGCTCCCTGTGCTCACAGATCACCAATGCCTTCAGCACCTGAGGACCCCTTCTCATCTGCTCCGATG
 ACCAAACCAGTGACAGTGGTGGCACCACAATCTCTACCTTCCAAGCTAATGGCACTGACTCAGCCTTCC
 ATGTGCTTACTAAGCCAGCCCACTACTGCTCTAGCACCCGTAGCAATGCCGTGCGTGAAACCAACCCTTG
 GGCCCATGCCCTGATGCTGCTAACAAGGAAATTGCAGCCACATGTTCCGGGACCGAGTGGGGTCAATCT
 TCTGGTGTGCTCTCCAGGTCTCTCCAGGCCGTCATAGACGTAATCCCTCTGAGGCCGACCGATGGT
 TAGAAGAGGTGTCTAAGAGCGTCCGGGCTCAGCAGCCCCAGGCCTCAGCTGCTCCTCTGCAGCCAGTTCT
 CCAGCCTCCTCCACCACTGCCATCTCCAGCCAGCATCACCTTTCCAAGGGAATGCATTCTCACCTCT
 CAGCCTGTGCCAGTGGGTGGTCCCAGCCCTGCAACCAGCCTTTGTCCCTGCCAGTCTATCCTGTGG
 CCAATGGAATGCCCTATCCAGCCCTAATGTGCCTGTGGTGGGCATCACTCCCTCCAGATGGTGGCCAA
 CGTATTTGGCACTGCAGGCCACCCTCAGGCTGCCATCCCATCAGTCACCCAGCCTGGTCAGGCAGCAG
 ACATTCCTCACTACGAGCAAGCAGTGCTACCACCAGTCCCTTCTTAAGCCTCCTGCTCAGCACCTCA
 ACGGTTCTGCAGCTTTCAATGGTGTAGATGATGGCAGGTTGGCCTCAGCAGACAGGCATACAGAGGTTCC
 TACAGGCACCTGCCAGTGGATCCTTTTGAAGCCAGTGGGCTGCATTAGAAAATAAGTCCAAGCAGCGT
 ACTAATCCCTCCCTACCAACCTTTCTCCAGTGACTTACAGAAGACGTTTGAATTGAACCTT

ACGCGTACGCGGCCGCTCGAGCAGAAACTCATCTCAGAAGAGGATCTGGCAGCAATGATATCCTGGATT
 ACAAGGATGACGACGATAAGGTTTAA

Protein Sequence: >RC220960 representing NM_001005743
 Red=Cloning site Green=Tags(s)

MNKLRSFRKKDVVPEASRPHQWQTDEEGVRTGKCSFPVKYLGHVEVDES RGMHICEDAVKRLKAERK
 FFKGFFGKTGKKAVKAVLWVSADGLRVVDEKTKDLIVDQTIKVSFCAPDRNFDRAFSYICRDGTTTRWI
 CHCFMAVKDTGERLSHAVGCFAACLERKQKREKCGVTATFDASRTTFTREGSFRVTTATEQAKREEIM
 KQMQDAKKAETDKIVVGSSVAPGNTAPSPSSPTSPTSDATTSLEMNPHAIPIRRHAPIEQLARQGSFRGF
 PALSQKMSPFKRQLSLRINELPSTMQRKTDFFPIKNAVPEVEGEAESISSLCSQITNAFSTPEDPFSSAPM
 TKPVTVVAPQSPTFQANGTDSAFHVLAKPAHTALAPVAMPVRETNPWAHAPDAANKEIAATCSGTEWQGS
 SGAASPLGFQAGHRRTPEADRWLEEVSKSVRAQQPQASAAPLQPVLQPPPTAISQPASPFQGNFLTS
 QPVPVGVVPALQPAFVPAQSYPVANGMPYPAPNVPVVGITPSQMVANVFGTAGHPQAAHPHQSPSLVRQQ
 TFPHYEASSATSPFFKPPAQHLNGSAAFNGVDDGRLASADRHTEVPTGTCPVDPFEAQWAALENKSKQR
 TNPSPNPFSSDLQKTFEIEL

TRTRPLEQKLI SEEDLAANDILDYKDDDDKV

Chromatograms: https://cdn.origene.com/chromatograms/mk6488_g11.zip

Restriction Sites: Sgfl-MluI

Cloning Scheme:

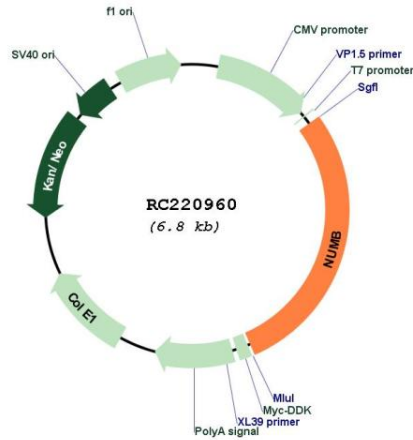


ACCN: NM_001005743

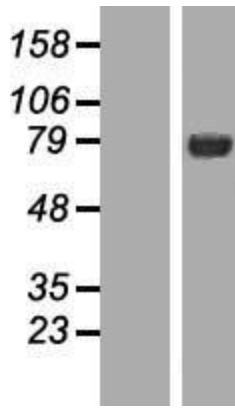
ORF Size: 1953 bp

OTI Disclaimer:	<p>Due to the inherent nature of this plasmid, standard methods to replicate additional amounts of DNA in E. coli are highly likely to result in mutations and/or rearrangements. Therefore, OriGene does not guarantee the capability to replicate this plasmid DNA. Additional amounts of DNA can be purchased from OriGene with batch-specific, full-sequence verification at a reduced cost. Please contact our customer care team at custsupport@origene.com or by calling 301.340.3188 option 3 for pricing and delivery.</p> <p>The molecular sequence of this clone aligns with the gene accession number as a point of reference only. However, individual transcript sequences of the same gene can differ through naturally occurring variations (e.g. polymorphisms), each with its own valid existence. This clone is substantially in agreement with the reference, but a complete review of all prevailing variants is recommended prior to use. More info</p>
OTI Annotation:	<p>This clone was engineered to express the complete ORF with an expression tag. Expression varies depending on the nature of the gene.</p>
Components:	<p>The ORF clone is ion-exchange column purified and shipped in a 2D barcoded Matrix tube containing 10ug of transfection-ready, dried plasmid DNA (reconstitute with 100 ul of water).</p>
Reconstitution Method:	<ol style="list-style-type: none">1. Centrifuge at 5,000xg for 5min.2. Carefully open the tube and add 100ul of sterile water to dissolve the DNA.3. Close the tube and incubate for 10 minutes at room temperature.4. Briefly vortex the tube and then do a quick spin (less than 5000xg) to concentrate the liquid at the bottom.5. Store the suspended plasmid at -20°C. The DNA is stable for at least one year from date of shipping when stored at -20°C.
Note:	<p>Plasmids are not sterile. For experiments where strict sterility is required, filtration with 0.22um filter is required.</p>
RefSeq:	<p>NM_001005743.1, NP_001005743.1</p>
RefSeq Size:	<p>3647 bp</p>
RefSeq ORF:	<p>1956 bp</p>
Locus ID:	<p>8650</p>
UniProt ID:	<p>P49757</p>
Cytogenetics:	<p>14q24.2-q24.3</p>
Protein Pathways:	<p>Notch signaling pathway</p>
MW:	<p>70.6 kDa</p>
Gene Summary:	<p>The protein encoded by this gene plays a role in the determination of cell fates during development. The encoded protein, whose degradation is induced in a proteasome-dependent manner by MDM2, is a membrane-bound protein that has been shown to associate with EPS15, LNX1, and NOTCH1. Alternative splicing results in multiple transcript variants. [provided by RefSeq, Feb 2016]</p>

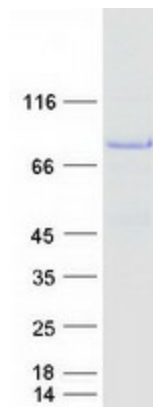
Product images:



Circular map for RC220960



Western blot validation of overexpression lysate (Cat# [LY423643]) using anti-DDK antibody (Cat# [TA50011-100]). Left: Cell lysates from untransfected HEK293T cells; Right: Cell lysates from HEK293T cells transfected with RC220960 using transfection reagent MegaTran 2.0 (Cat# [TT210002]).



Coomassie blue staining of purified NUMB protein (Cat# [TP320960]). The protein was produced from HEK293T cells transfected with NUMB cDNA clone (Cat# RC220960) using MegaTran 2.0 (Cat# [TT210002]).