

Product datasheet for RC220957

TTF2 (NM_003594) Human Tagged ORF Clone

Product data:

Product Type:	Expression Plasmids
Product Name:	TTF2 (NM_003594) Human Tagged ORF Clone
Tag:	Myc-DDK
Symbol:	TTF2
Synonyms:	F2; HuF2; ZGRF6
Mammalian Cell Selection:	Neomycin
Vector:	pCMV6-Entry (PS100001)
E. coli Selection:	Kanamycin (25 ug/mL)
ORF Nucleotide Sequence:	>RC220957 representing NM_003594 Red=Cloning site Blue=ORF Green=Tags(s)

TTTTGTAATACGACTCACTATAGGGCGGCCGGAATTCGTCGACTGGATCCGGTACCGAGGAGATCTGCC
GCC**CGATCGCC**

ATGGAAGAAGTTAGGTGTCCAGAGCACGGGACTTTCTGCTTTCTTAAGACCGGGCTCCGCGATGGCCGA
ATAAAGGAAAGAGCTTCTACGTGTCCGGGCAGACACGTGCAGCTTCGTGCGGGCCACCGACATTCCTGT
TTCCCATTTGCTTATTGCATGAGGACTTTGTGGTAGAGCTTCAGGGTTTGTCTGCCACAGGACAAGAAA
GAATACAGATTGTTCTCCGATGCATTAGAAGTAAGGCAGAGGGAAACGCTGGTGTGGAAGTATCCAT
GGCAGGATCCTGATTCCAAGAACATTCGTATCCAATAAGTCTCAGCATGCATCTGAGACATTTTCATCA
TTCTTCCAACCTGGCTGAGAAATCCATTCAGGTAAGTCTGACAAGAATCAAGAACCAGCTCTCTGAAACAG
CTCATCAAAGGTGAAGGTGAGGAAAAGAAGGCTGATAAGAAGCAAAGAGAAAAGGGAGATCAGCTTTTCG
ATCAAAAGAAAAGAAGCAAGCCTGAAATGATGGAGAAAGACCTCTCATCTGGCCTGGTACCAAGAAAAA
ACAATCTGTAGTTCAAGAGAAGAAGCAAGAAGAGGGAGCAGAGATTCAGTGTGAGGCAGAGACTGGAGGC
ACACACAAAAGAGACTTTTCTGAAATTAATCTCAACAGTGCCAAAGGTAATGAGCTTACAAGACCATCTG
CATCTTCTCAGGAGAAAATCAAGTGGTAAGAGTCAAGATGTCCAAGAGAATCAGAACCTCTGAGAGAAAA
GGTTACCCAGCTTTTGCCTCAAAATGTTACAGTCACAACCTCAATAAGCAAGCCCCAGAAAGGGGGACCC
CTCAACAAGGAGTACACGAACTGGGAGGCTAAAGAAACAAGCAAGGATGGCCCTAGCATAACAGGCCA
CCCAGAAAAGCCTGCCTCAGGGGCAATTCGAAGAGCGGCCGAGACCCACAGTGTGCTCCTGGAGG
ACCAGCGGCTCAGGCTGCACCAGCAGCACCAGGCTTTCCCTGGGTGAGGGCCGTGAAGCTGCCACAAGC
AGTGACGACGAGGAGGAAGATGATGTTGTTTTTGTTCCTCTAAGCCTGGGAGCCCCCTACTCTTTGACT
CGACTCTGGACTTAGAGACGAAGGAAAACCTCCAATTCCTGATCGAAGTGTGCAAGAAAGGTGTCTCC
TGCCTCAGGTGTTTCCAAGAAGGTAGAACCCTCAGACCCAGTAGCCCGGCGTGTCTACCTTACAACACAA
CTGAAACAAAAGAAGAGCACACTGGCATCAGTGAACATCCAGGCTCTCCAGACAAGGGTCAGAAGTTGA
TCAAACAAATCCAGGAGCTGGAGGAAGTACTCAGTGGTCTTACCCTTTCCCAGAGCAAGGAACTAATGA
GAAGAGTAACAGTCAAGTACCACAGCAGAGTCACTTACCAAAACTACCCTGGCCCTCCCACCTGGT



[View online »](#)

CCTCCCAACCCCTTCCTCGTCGTGGTACCCAACCTGTGGTTCTCTAGAACTAAAGTCTGCCTGCCAGG
TGACTGCTGGAGGATCCAGTCACTGCTATCGAGGCCATACAAACCAAGATCACGTTTCATGCAGTGTGGAA
AATCACAAGTGAAGCCATCGGTCAACTGCATCGCTCACTTGAGTCATGTCCTGGTGAGACGGTTGTGGCA
GAAGATCCCGCCGGGCTGAAGGTCCCTTTGCTACTACACCAGAAGCAGGCATTGGCTTGGTTACTATGGC
GAGAAAGTCAGAAGCCACAAGGAGGAATTCTGGCAGATGATATGGGCTTAGGAAAAACCTGACAATGAT
TGCCTCATCCTGACCCAGAAGAATCAAGAGAAAAAGGAAAAAGGAAAAAGCAGCCTTTGACGTGG
CTCTCCAAGATGACTCTTGTGACTTTACTTCCCATGGAACACTAATCATCTGCTCCTGCCCTCCCTGATCC
ATCATTGGAAAAATGAGGTGGAGAAACGGGTGAACAGCAACAACTAAGAGTCTATCTCTACCATGGGCC
AAACCGGGATTACAGTGCAGAGTCCTCTACATATGACATCGTGATCACTACCTATAGCCTCGTGGCC
AAGGAGATTTCCACAAACAAGCAAGAGGCGAGATCCCAGGTGCAAACCTCAATGTGGAGGGCACCTCAA
CACCTTTGCTTCGAATAGCCTGGGCTCGAATCATATTGGATGAAGCTCACAATGTTAAGAATCCCGGAGT
GCAGACTTCCATAGCTGTGTGAAGCTACAAGCCTGTGCCGTTGGGCTGCTCACTGGAACCCCCATTCAA
AACAACTATTGGATATGTATTCGCTGCTGAAGTTTCTCCGTTGCTCTCCATTTGATGAGTTCAATCTGT
GGAGGAGTCAGGTTGACAATGGCTCAAAGAAAGGAGGAGAACGGTTAAGTATTTAAACCAAGAGCCTTTT
GCTGAGGAGAACAAAAGACCAGCTGGACTCTACTGGCAGACCTTTGGTGATACTGCCCCAGCGTAAATTT
CAGTTGCACCATTTAAAGCTTTCTGAAGATGAAGAGACTGTTTACAATGTGTTTTTTGCAAGATCAAGGT
CAGCTCTGCAATCCTATCTAAAAAGACATGAAAGTAGAGGCAACCAATCTGGAAGAAGCCCTAATATCC
ATTCAGTAGAGTGGCACTGGAGTTTGGGCTGAGGAGCCTAGACTCGGAGGCAGCAGACTCACCGAGA
TCCAGCACCGTCCACATACTGTCCCAGTTGCTGAGACTCCGCCAGTGTGCTGTCATCTTTCTTTACTGA
AGTCGGCCCTGGATCCAATGGAAGTGAAGGGTGAAGGTCTTGTCTTTCCCTGGAAGAACAGCTCAGTGC
TTTGACCTTGTGAGAAGTCCGTGACTCAGAGCCATCTTCCACTGTTTCCCTAACGGCACCTTCTCAAG
ATGGAGCTTTTGAAGGCATGCGAGAGAGCACCAGATTTTCATCTCTGTTGGCAGAATTGGAGGCAATTC
AAAGAAATTCAGCATCCCAAAGAGTGTCAATTGTCTCTCAGTGGACCAACATGCTGAAAGTTGTAGCATT
GCACCTGAAGAAGCATGGACTGACTTATGCCACCATCGATGGCTCTGTCAATCCCAAGCAGAGAATGGAC
TTGGTAGAGGCATTTAACCACTCCAGAGCCCTCAGGTAATGCTAATCTCTCTCTTGGCCGGAGGTGTTG
GTCTAAACCTGACTGGAGGAAATCACCTCTTTCTTTTGGACATGCACTGGAATCCATCACTTGAAGATCA
AGCTTGTGACCGAATTTACCGAGTAGGGCAGCAGAAAGATGTTGTACACACAGATTTGTTTGTGAGGGA
ACAGTAGAAGAAAAGATCTTACAGCTCCAAGAAAAAAGAAAGATTTGGCCAAACAAGTTCTATCAGGGT
CTGGAGAATCTGCACCAAGCTCACCTTGGCTGACCTCAGAGTCCTTTTTTGGCATC

ACGCGTACGCGGCCGCTCGAGCAGAACTCATCTCAGAAGAGGATCTGGCAGCAATGATATCCTGGATT
ACAAGGATGACGACGATAAGGTTTAA

Protein Sequence: >RC220957 representing NM_003594
Red=Cloning site Green=Tags(s)

```
MEEVRCPEHGTFCLKTGVRDGPNGKGSFYVCRADTCSFVRATDIPVSHCLLHEDFVVELQGLLLPQDKK
EYRFFRCIRSKAEGKRWCGSIPWQDPDSKEHSVSNKSQHASETFHHSSNWL RNPFKVLDKNQEPALWKQ
LIKGE GEEKADKKQREKGDQLFDQKKEQKPEMMEKDLSSGLVPKKKQSVVQEKQEEGAEIQCEAETGG
LHKRDFSEIKSQCCQGNELTRPSASSQEKSSGKSQDVQRESEPLREKVTQLLPQNVHSHNSISKPKGGP
LNKEYTNWEAKETKAKDGPSIQATQKSLPQGHFQERPETHSVPAPGGPAAQAAPAAPGLSLGEGREAATS
SDDEEEDDVVVFVSSKPGSPLLFDSTLDLETKENLQFPDRSVQRKVSPASGVSKKVEPSDPVARRVYLTQ
LKQKKSTLASVNIQALPDKGQKLIKQIQELEEVLSGLTLSPEQGTNEKSNSQVPQQSHFTKTTTGPPLV
PPQPLPRRGTQPVGSLELK SACQVTAGGSSQCYRGHTNQDHHVAVWKITSEAIGQLHRSLESCPGETVVA
EDPAGLVPLLLHQKALAWLLWRESQKPQGGILADDMGLGKTLTMIALILTQKNQEKKEEKEKSTALTW
LSKDDSCDFTSHGTLIICPASLIHHWNEVEKRVNSNKL RVYL YHGPNRDSRARVLSTYDIVITTSYSLVA
KEIPTNKQEA EIPGANLNVEGTSTPLLR IAWARIILDEAHNVKNPRVQTSIAVCKLQACARWAVTGTPIQ
NNLLDMYSLLKFLRCSPFDEFNLWRSQVDNGSKKGGERLSILTKSLLLRRTKDQLDSTGRPLVILPQRKF
QLHHLKLS EDEETVYNVFFARSRSALQSYLKRHESRGNQSGRSPNPF SRVALEFGSEEPHSEAADSPR
SSTVHILSQLRLRQCCCHLSLLKSALDPMELKGEGLVLSLEEQLSALTLSELRDSEPSSTVSLNGTFFK
MELFEGMRESTKISSLLAELEAIQRNSASQKSVIVSQWTNMLKVVALHLKKHGLTYATIDGSVNPQKQRM
LVEAFNHSRGPQVMLISLLAGGVGLNL TGGNHLFLLDMHWNPSLEDQACDRIYRVGQQKDVVIHRFVCEG
TVEEKILQLQEKKKDLAKQVLSGSGESVTKLTLADLRVLFGI
```

TRTRPLEQKLISEEDLAANDILDYKDDDDKV

Chromatograms: https://cdn.origene.com/chromatograms/mk8116_c11.zip

Restriction Sites: SgfI-MluI

Cloning Scheme:

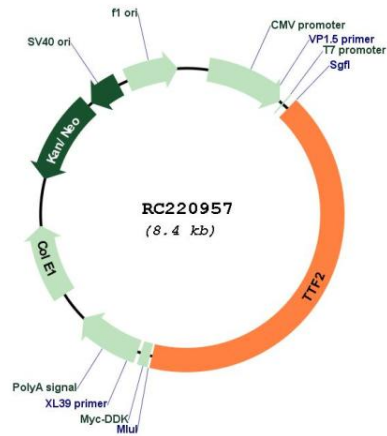


ACCN: NM_003594

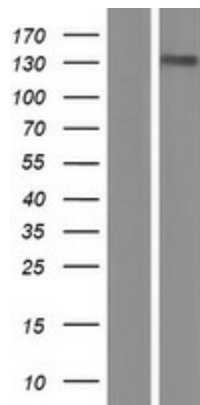
ORF Size: 3486 bp

OTI Disclaimer:	The molecular sequence of this clone aligns with the gene accession number as a point of reference only. However, individual transcript sequences of the same gene can differ through naturally occurring variations (e.g. polymorphisms), each with its own valid existence. This clone is substantially in agreement with the reference, but a complete review of all prevailing variants is recommended prior to use. More info
OTI Annotation:	This clone was engineered to express the complete ORF with an expression tag. Expression varies depending on the nature of the gene.
Components:	The ORF clone is ion-exchange column purified and shipped in a 2D barcoded Matrix tube containing 10ug of transfection-ready, dried plasmid DNA (reconstitute with 100 ul of water).
Reconstitution Method:	<ol style="list-style-type: none">1. Centrifuge at 5,000xg for 5min.2. Carefully open the tube and add 100ul of sterile water to dissolve the DNA.3. Close the tube and incubate for 10 minutes at room temperature.4. Briefly vortex the tube and then do a quick spin (less than 5000xg) to concentrate the liquid at the bottom.5. Store the suspended plasmid at -20°C. The DNA is stable for at least one year from date of shipping when stored at -20°C.
RefSeq:	NM_003594.4
RefSeq Size:	4860 bp
RefSeq ORF:	3489 bp
Locus ID:	8458
UniProt ID:	Q9UNY4
Cytogenetics:	1p13.1
Domains:	SNF2_N, DEAD, helicase_C
Protein Families:	Transcription Factors
MW:	129.4 kDa
Gene Summary:	This gene encodes a member of the SWI2/SNF2 family of proteins, which play a critical role in altering protein-DNA interactions. The encoded protein has been shown to have dsDNA-dependent ATPase activity and RNA polymerase II termination activity. This protein interacts with cell division cycle 5-like, associates with human splicing complexes, and plays a role in pre-mRNA splicing. [provided by RefSeq, Jul 2008]

Product images:



Circular map for RC220957



Western blot validation of overexpression lysate (Cat# [LY418563]) using anti-DDK antibody (Cat# [TA50011-100]). Left: Cell lysates from untransfected HEK293T cells; Right: Cell lysates from HEK293T cells transfected with RC220957 using transfection reagent MegaTran 2.0 (Cat# [TT210002]).