

Product datasheet for **RC220953**

OSBPL9 (NM_148905) Human Tagged ORF Clone

Product data:

Product Type:	Expression Plasmids
Product Name:	OSBPL9 (NM_148905) Human Tagged ORF Clone
Tag:	Myc-DDK
Symbol:	OSBPL9
Synonyms:	ORP-9; ORP9
Mammalian Cell Selection:	Neomycin
Vector:	pCMV6-Entry (PS100001)
E. coli Selection:	Kanamycin (25 ug/mL)



[View online »](#)

ORF Nucleotide Sequence:

>RC220953 representing NM_148905
 Red=Cloning site Blue=ORF Green=Tags(s)

TTTTGTAATACGACTCACTATAGGGCGGCCGGAATTCGTCGACTGGATCCGGTACCGAGGAGATCTGCC
 GCC**CGGATCGCC**

ATGGTAGAATCAATTAACACTGCATTGTGTTGCTGCAGATTGCCAAAAGTACTATTAATCCCGTAGATG
 CAATATATCAACCTAGTCTTTGGAACCTGTGATCAGCACAATGCCTTCCAGACTGTGTTACCTCCAGA
 ACCTGTTCAAGTTGTGTAAGTCAGAGCAGCGTCCATCTTCCCTACCAAGTTGGACCTGTGTTGGCTACCTTG
 GGACATCATCAGACTCCTACACCAAATAGTACAGGCAGTGGCCATTACCACCGAGTAGCAGTCTCACTT
 CTCCAAGCCACGTGAACCTGTCTCCAAATACAGTCCCAGAGTTCTTACTCCAGCAGTGAAGATGAATT
 TTATGATGCTGATGAATCCATCAAAGTGGCTCATCCCCAAAGCGCTTAATAGATTCTTCTGGATCTGCC
 TCAGTCTGACACACAGCAGCTCGGAAATAGTCTAAAACGCCAGATACCACAGAATCACTTAATTCTT
 CCTTGTCCAATGGAACAAGTGATGCTGACCTGTTTGATTACATGATGACAGAGATGATGATCGGGAGGC
 AGGGTCTGTGGAGGAGCACAAGAGCGTTATCATGCATCTTGTGCGAGTTAGACTTGGAAATGGATCTT
 ACTAAGGTAGTTCTTCCAACGTTTATTCTTGAAAGAAGATCTCTTTAGAAATGTATGCAGACTTTTTTG
 CACATCCGGACCTGTTTGTGAGCATTAGTGACCAGAAGGATCCCAAGGATCGAATGGTTCAGGTTGTGAA
 ATGGTACCTCTCAGCCTTTCATGCGGGAAGGAAAGGATCAGTTGCCAAAAGCCATAACAATCCCATTTTG
 GGCGAGATTTTTCAGTGTATTGGACATTACCAATGATACTGAAGAGAACACAGAACTAGTTTCAGAAG
 GACCAGTCCCTGGGTTTCCAAAACAGTGAACATTTGTGGCTGAGCAGGTTTCCCATCATCCACCCAT
 TTCAGCCTTTTATGCTGAGTGTTTAACAAGAAGATAAATCAATGCTCATATCTGGACCAATCAAAA
 TTCCTTGGGATGCAATTGGGGTGCACAACATAGGGCAGGGCTGTGTCTCATGTCTAGACTATGATGAAC
 ATTACATCTCACATCCCAATGGCTATGGAAGTCTATCCTCACAGTGCCTGGGTGGAAATTAGGAGG
 AGAATGCAATATTAATTGTTCCAAAACAGGCTATAGTGCAAAATACATCTTCCACACTAAACCCTTCTAT
 GGGGGCAAGAAGCACAGAATTAAGTCCGAGATTTTTTCTCCAAATGACAAGAAGTCTTTTTGCTCAATTG
 AAGGGGAATGGAATGGTGTGATGTATGCAAAATATGCAACAGGGGAAAATACAGTCTTTGTAGATACCA
 GAAGTTGCCTATAATCAAGAAGAAAGTGAAGGAGTTGGAAGATCAGAACGAGTATGAATCCCGCAGCCTT
 TGAAGGATGTCACCTTCAACTTAAAAATCAGAGACATTGATGCAGCAACTGAAGCAAAGCACAGGCTTG
 AAGAAAGACAAAGAGCAGAAGCCCGAGAAAGGAGAAGGAAATTCAGTGGGAGACAAGGTTATTTCA
 TGAAGATGGAGAATGCTGGGTTTATGATGAACCATTACTGAAACGCTTGGTGTGCCAAGCAT

**ACGCGTACGCGGCCGCTCGAGCAGAAACTCATCTCAGAAGAGGATCTGGCAGCAAATGATATCCTGGATT
 ACAAGGATGACGACGATAAGGTTTAA**

Protein Sequence:

>RC220953 representing NM_148905
 Red=Cloning site Green=Tags(s)

MVESIKHCIVLLQIAKSTINPVDAIYQPSLEPVISTMPSQTVLPPEPVQLCKSEQRPSLPPVGPVLA
 TLAGHHQTPPTPNSTGSGHSPSSSLTSPSHVNLSPNTVPEFSYSSSEDEFYDADEFHQSGSSPKRLIDSSGSA
 SVLTHSSGNSLKRPDTEESLNSSLNNGTSDADLFDSDHDDRDDDAEAGSVEEHKSVIMHLLSQVRLGMDL
 TKVVLPTFILERRSLLLEMYADFFAHPDLFVVISDQKDPKDRMVQVVKWYLSAFHAGRKGSVAKKPYNPIL
 GEIFQCHWTLPNDEENTELVSEGPVWPVSKNSVTFVAEQVSHHPPISAFYAEFCFNKKIQFNAHIWTKSK
 FLGMSIGVHNIGQGCVSCLDYDEHYILTFPNGYGRSILVTPWVELGGECNINCSKTGYSANIIFHTKPFY
 GGKCHRITAEIFSPNDKKSFCSEIEGWNGVMYAKYATGENTVFVDTKKLP
 IIKKKVVRKLEDQNEYESRSLWKDVTFLNKIRDIDAATEAKHRLERQRAEARERKEKEIQWETRLFHEDGECWVYDEPLLKRLGAAKH

TRTRPLEQKLISEEDLAANDILDYKDDDDKV

Chromatograms:

https://cdn.origene.com/chromatograms/mg2860_c01.zip

Restriction Sites:

Sgfl-MluI

Cloning Scheme:


ACCN: NM_148905

ORF Size: 1674 bp

OTI Disclaimer: The molecular sequence of this clone aligns with the gene accession number as a point of reference only. However, individual transcript sequences of the same gene can differ through naturally occurring variations (e.g. polymorphisms), each with its own valid existence. This clone is substantially in agreement with the reference, but a complete review of all prevailing variants is recommended prior to use. [More info](#)

OTI Annotation: This clone was engineered to express the complete ORF with an expression tag. Expression varies depending on the nature of the gene.

Components: The ORF clone is ion-exchange column purified and shipped in a 2D barcoded Matrix tube containing 10ug of transfection-ready, dried plasmid DNA (reconstitute with 100 ul of water).

- Reconstitution Method:**
1. Centrifuge at 5,000xg for 5min.
 2. Carefully open the tube and add 100ul of sterile water to dissolve the DNA.
 3. Close the tube and incubate for 10 minutes at room temperature.
 4. Briefly vortex the tube and then do a quick spin (less than 5000xg) to concentrate the liquid at the bottom.
 5. Store the suspended plasmid at -20°C. The DNA is stable for at least one year from date of shipping when stored at -20°C.

RefSeq: [NM_148905.4](#)

RefSeq Size: 2751 bp

RefSeq ORF: 1677 bp

Locus ID: 114883

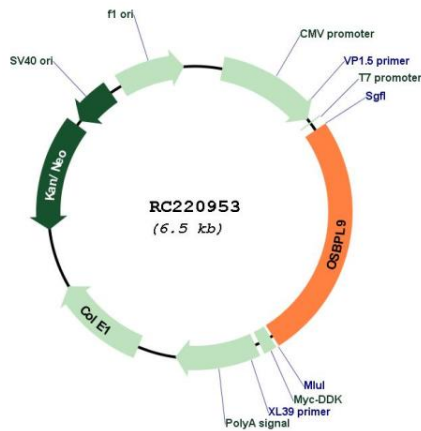
UniProt ID: [Q96SU4](#)

Cytogenetics: 1p32.3

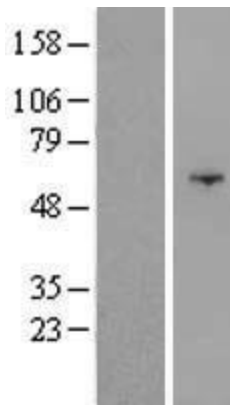
MW: 62.3 kDa

Gene Summary: This gene encodes a member of the oxysterol-binding protein (OSBP) family, a group of intracellular lipid receptors. Most members contain an N-terminal pleckstrin homology domain and a highly conserved C-terminal OSBP-like sterol-binding domain, although some members contain only the sterol-binding domain. This family member functions as a cholesterol transfer protein that regulates Golgi structure and function. Multiple transcript variants, most of which encode distinct isoforms, have been identified. Related pseudogenes have been identified on chromosomes 3, 11 and 12. [provided by RefSeq, Jul 2010]

Product images:



Circular map for RC220953



Western blot validation of overexpression lysate (Cat# [LY407761]) using anti-DDK antibody (Cat# [TA50011-100]). Left: Cell lysates from un-transfected HEK293T cells; Right: Cell lysates from HEK293T cells transfected with RC220953 using transfection reagent MegaTran 2.0 (Cat# [TT210002]).