

## Product datasheet for **RC220947**

### Cyclin M3 (CNNM3) (NM\_199078) Human Tagged ORF Clone

#### Product data:

Product Type:	Expression Plasmids
Product Name:	Cyclin M3 (CNNM3) (NM_199078) Human Tagged ORF Clone
Tag:	Myc-DDK
Symbol:	Cyclin M3
Synonyms:	ACDP3
Mammalian Cell Selection:	Neomycin
Vector:	pCMV6-Entry (PS100001)
E. coli Selection:	Kanamycin (25 ug/mL)



[View online »](#)

ORF Nucleotide  
Sequence:

>RC220947 representing NM\_199078  
Red=Cloning site Blue=ORF Green=Tags(s)

TTTTGTAATACGACTCACTATAGGGCGGCCGGGAATTCGTCGACTGGATCCGGTACCGAGGAGATCTGCC  
GCCGCGATCGCC

ATGGCGGGCGGTAGCTGCGGGCGGTTCGTTAGCTGGTTGTTGCGCGCTCTGCCTGGCAACGCCG  
CGGGGAGGCCCGCGCCGGCCCGAGTCTGGCTTCTGCCTGGAGGAGATGGAGCGGGCGCGGG  
TTGGGTACCGGAGGGCGCGGGACACCCGACGCCACCTTCTCTGCGCTCTTCGCCCCGGG  
TTCGCAACAGCTCTTGGTCTGGTGGCCCGGAGGGGGCGGGTCCGGGAGGAGCGGCCCTCCCCG  
CGGGGAGTGGCGCGCTGCTGCGCTTGCCTGCGGGCCGAGCCGTGCGCCGCACTCGGCGTGT  
GGCGGTGCGCTGGAGCCGGTGGCGGGCGGTGAGGAGCGCGCCGCTGGCTCTGGCCTGGGG  
GCGGCCGGTCTGGCCTGGCAGCGTGGCGGAGGCTGCAGCTGAGCGCGTGGCCTGGCGCTG  
CCGAGGTGCAAGTCTGCGGAGAGCGCTCGGAGCGGAGCGTGGCGGGCGCGGCTTTGGAGCCCG  
GCGGCGTGGCCGGTGGCTTGGCGCGCTGCTGCTGGCCAGCTGGCGCAGGCGCGCTGGCG  
GTGCTGTGTACCGCGCGCCGCGCAGCGTGGCTGCCCGCTGTTGGGAGCGCGGGGCTCGTGTCC  
TGGTGGGAGAGGTGGTGGCGGCCCGTGGAGCGCGCTGGAGCGTGGCGTGGCGCCGAGCGCTCG  
CCTCAGCCGCTGGCGTCTGCTCACTGTCGCGCTGCCCGTGGGGCAGCTGCTGGAGTGGCG  
GCGCGGCCGGCGGTGCGGGAGCGGTGCTGGAGTGGCGCGCGGGCGGGGACCCCTACAGCGATC  
TCAGCAAGGGCGTGTGCGTGGCGGACCGTGGAGAGTGTCAACGCCCTCGAAGACTGCTTCATGCT  
GGACGCCAGCAGCTGCTGGACTTCGGCGTCTGGCCAGCATCATGCAGAGCGGCCACACCGCATCCC  
AAGACTGCACGCCGCTCAGCACCATCACTGTTTCTACAACCATCCGCTCCACTTCGCTTCAACGACAC  
CAAGCTGGACGCTGCTGGAGGAATCAAGCGAGGAGACCCGTGGTGAAGAGGAAGCCTGCTTCTCTG  
ATGGCCCCCTGAAGCGGAAGGAGGAGTTCTCTTGTCAAGGTGTCTGATGATGAATATAAAGTAACAA  
TCTCGCTCAGCTGCTCTGGCCACCCAGCGTTCCTGTCCCGAGAAGTGGATGATTCAGCCCGTGG  
CATCTCTGAGAAGTCTGCTGCACCTGTTGAAGCATCCAGTGTCAACCAGGAAGTGGGTTTACGAG  
AGCAACCGGCTGGCCACACCACTACCTGTACCAGCGCAGCCAGCCGGTGGATTACTTCATTCTCATCC  
TGCAGGGCAGGGTTGAAGTGGAGATCGGAAAGAGGGTCTGAAGTTTGAATGGGGCTTCACGACTA  
TGGAGTGTGGCCCTAAGTGTCCATCCTCGTTACACAGTCCCGGTGCTCTGCTCCAGCCATCCGC  
CATGACCTGCAGCCGACCCAGGTGACGGCAGCATTCTGCGTATTGTCGACTACCCGTGAGGG  
CGCTCTGATCTGCAGCTCATCAAGTTACGCGACTGCAGTACCTCAATGCACTCCTGGCTACCCGAGC  
CCAGAACCTGCCACAGTCCCCTGAGAACACCGACTGCAGTTATTCCAGGCAGCCAGACCAGGCTCCTT  
GGTGAGAAGACCACACAGCGGCAGGGTCCAGCCACAGCAGGCCCGCGTCCCGGTGGAAGGCAGCCCTG  
GGCGGAACCCAGGCGTT

ACGCGTACGCGGGCGCTCGAGCAGAACTCATCTCAGAAGAGGATCTGGCAGCAATGATATCCTGGATT  
ACAAGGATGACGACGATAAGGTTTAA

**Protein Sequence:** >RC220947 representing NM\_199078  
Red=Cloning site Green=Tags(s)

```

MAAAVAAAGRLGWLFAALCLGNAAGEAAPGPRVLGFCLEEDGAAGAGWVRGGAARDTPDATFLRLRFGPG
FANSSWSWVAPEGAGCREEAASPAGEWRAALLRLRLRAEAVRPHSALLAVRVEPGGAAEEAAPWALGLG
AAGLLALAALARGLQLSALALAPAEVQVLRRESGSEAERAAARRLEPARRWAGCALGALLLLASLAQAALA
VLLYRAAGQRAVPAVLGSAGLVFLVGEVPPAAVSGRWTLALAPRALGLSRLAVLLTLPVALPVGQLELELA
ARPGRLRERVLELARGGGDPYSDLKGVLRCRTVEDVLTPLEDCFMDASTVLDVDFVLAASIMQSGHTRIP
VYEEERSNIVDMLYLKDLAFVDPEDCTPLSTITRFYNHPLHFVFNNTKLDVLEEFKRGDTPVVKRKPASL
MAPLKRKEEFSLFKVSDDEYKVTISPQLLLATQRFLSREVDVFSPLRISEKVLHLLKHPSVNQEVRFDE
SNRLATHHYLYQRSQPVDFYILILQGRVEVEIGKEGLKFENGAFYYGVSALTPSSVHQPVSSSLQPIR
HDLQDPDGDGTHSSAYCPDYTVRALSDLQLIKVTRLQYLNALLATRAQNLPQSPENTDLQVIPGSQTRLL
GEKTTTAAAGSSHSRPGVPVEGSPGRNPGV
    
```

TRTRPLEQKLISEEDLANDILDYKDDDDKV

**Chromatograms:** [https://cdn.origene.com/chromatograms/mk8071\\_g09.zip](https://cdn.origene.com/chromatograms/mk8071_g09.zip)

**Restriction Sites:** SgfI-MluI

**Cloning Scheme:**



**ACCN:** NM\_199078

**ORF Size:** 1977 bp

**OTI Disclaimer:** The molecular sequence of this clone aligns with the gene accession number as a point of reference only. However, individual transcript sequences of the same gene can differ through naturally occurring variations (e.g. polymorphisms), each with its own valid existence. This clone is substantially in agreement with the reference, but a complete review of all prevailing variants is recommended prior to use. [More info](#)

**OTI Annotation:** This clone was engineered to express the complete ORF with an expression tag. Expression varies depending on the nature of the gene.

**Components:** The ORF clone is ion-exchange column purified and shipped in a 2D barcoded Matrix tube containing 10ug of transfection-ready, dried plasmid DNA (reconstitute with 100 ul of water).

**Reconstitution Method:**

1. Centrifuge at 5,000xg for 5min.
2. Carefully open the tube and add 100ul of sterile water to dissolve the DNA.
3. Close the tube and incubate for 10 minutes at room temperature.
4. Briefly vortex the tube and then do a quick spin (less than 5000xg) to concentrate the liquid at the bottom.
5. Store the suspended plasmid at -20°C. The DNA is stable for at least one year from date of shipping when stored at -20°C.

**RefSeq:** [NM\\_199078.3](#)

**RefSeq Size:** 3313 bp

**RefSeq ORF:** 1980 bp

**Locus ID:** 26505

**UniProt ID:** [Q8NE01](#)

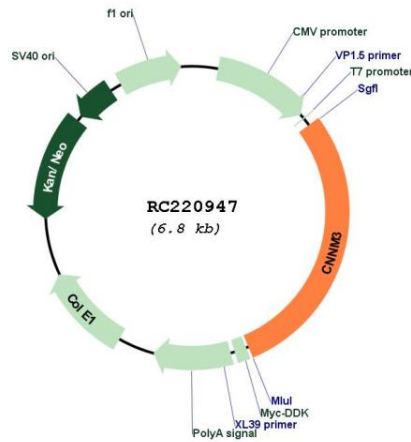
**Cytogenetics:** 2q11.2

**Protein Families:** Transcription Factors, Transmembrane

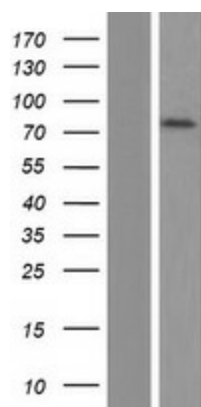
**MW:** 70.5 kDa

**Gene Summary:** Probable metal transporter.[UniProtKB/Swiss-Prot Function]

**Product images:**



Circular map for RC220947



Western blot validation of overexpression lysate (Cat# [LY404736]) using anti-DDK antibody (Cat# [TA50011-100]). Left: Cell lysates from untransfected HEK293T cells; Right: Cell lysates from HEK293T cells transfected with RC220947 using transfection reagent MegaTran 2.0 (Cat# [TT210002]).