

## Product datasheet for **RC220945**

### Kallikrein 9 (KLK9) (NM\_012315) Human Tagged ORF Clone

#### Product data:

Product Type:	Expression Plasmids
Product Name:	Kallikrein 9 (KLK9) (NM_012315) Human Tagged ORF Clone
Tag:	Myc-DDK
Symbol:	Kallikrein 9
Synonyms:	KLK-L3; KLKL3
Mammalian Cell Selection:	Neomycin
Vector:	pCMV6-Entry (PS100001)
E. coli Selection:	Kanamycin (25 ug/mL)
ORF Nucleotide Sequence:	>RC220945 representing NM_012315 Red=Cloning site Blue=ORF Green=Tags(s)

TTTTGTAATACGACTCACTATAGGGCGCCGGGAATTCGTCGACTGGATCCGGTACCGAGGAGATCTGCC  
GCC**CGATCGCC**

ATGAAGCTGGGACTCCTCTGTGCTCTGCTCTCTGCTGGCAGGGCATGGCTGGGCAGACACCCGTGCCA  
TCGGGGCCGAGGAATGTCGCCCCAACTCCAGCCTTGGCAGGCCGGCCTTCCACCTTACTCGGCTCTT  
CTGTGGGGCGACCCTCATCAGTGACCGCTGGCTGCTCACAGCTGCCCACTGCCGAAGCCGTATCTGTGG  
GTCCGCCCTTGAGAGCACCACCTCTGAAATGGGAGGGTCCGGAGCAGCTGTTCCGGGTTACGGACTTCT  
TCCCCACCTGGCTTCAACAAGGACCTCAGCGCCAATGACCACAATGATGACATCATGCTGATCCGCCT  
GCCCAGGCAGGCAGTCTGAGTCTGCTGTGCAGCCCCTCAACCTCAGCCAGACCTGTGTCTCCCCAGGC  
ATGCAGTGTCTCATCTCAGGCTGGGGGGCCGTGTCCAGCCCCAAGGCCTGTTTCCAGTCACACTGCAGT  
GTGCCAACATCAGCATCCTGGAGAACAACCTCTGTCACTGGGCATACCCTGGCCACATCTCGGACAGCAT  
GCTCTGTGCGGGCCTGTGGGAGGGGGCCGAGGTTCTGCCAGGGTGACTCTGGGGGCCCCCTGGTTTGC  
AATGGAACCTTGGCAGGCGTGGTGTCTGGGGGTGCTGAGCCCTGCTCCAGACCCCGCGCCCCGAGTCT  
ACACCAGCGTATGCCACTACCTTGACTGGATCCAAGAAATCATGGAGAAC

**ACGCGT**ACGCGGCCGCTCGAGCAGAACTCATCTCAGAAGAGGATCTGGCAGCAAATGATATCCTGGATT  
ACAAGGATGACGACGATAAGGTTTAA



[View online »](#)

**Protein Sequence:** >RC220945 representing NM\_012315  
Red=Cloning site Green=Tags(s)

MKLGLLCALLSLLAGHWADTRAIGAEECRPNSQPWQAGLFHLTRLFCGATLISDRWLLTAAHCRKPYLW  
 VRLGEHHLWKWEGPEQLFRVTDFFPHPGFNKDL SANDHNDIML IRLPRQARLSPAVQPLNLSQTVCVSPG  
 MQCLISGWGAVSSPKALFPVTLQCANISILENKLCHWAYPGHISDSMLCAGLWEGGRGSCQGDSSGGPLVC  
 NGTLAGVVSGGAEPSCRPRRPAVYTSVCHYLDWIQEIMEN

TRTRPLEQKLISEEDLAANDILDYKDDDDKV

**Chromatograms:** [https://cdn.origene.com/chromatograms/mk6116\\_d08.zip](https://cdn.origene.com/chromatograms/mk6116_d08.zip)

**Restriction Sites:** SgfI-MluI

**Cloning Scheme:**



**ACCN:** NM\_012315

**ORF Size:** 750 bp

**OTI Disclaimer:** The molecular sequence of this clone aligns with the gene accession number as a point of reference only. However, individual transcript sequences of the same gene can differ through naturally occurring variations (e.g. polymorphisms), each with its own valid existence. This clone is substantially in agreement with the reference, but a complete review of all prevailing variants is recommended prior to use. [More info](#)

**OTI Annotation:** This clone was engineered to express the complete ORF with an expression tag. Expression varies depending on the nature of the gene.

**Components:** The ORF clone is ion-exchange column purified and shipped in a 2D barcoded Matrix tube containing 10ug of transfection-ready, dried plasmid DNA (reconstitute with 100 ul of water).

**Reconstitution Method:**

1. Centrifuge at 5,000xg for 5min.
2. Carefully open the tube and add 100ul of sterile water to dissolve the DNA.
3. Close the tube and incubate for 10 minutes at room temperature.
4. Briefly vortex the tube and then do a quick spin (less than 5000xg) to concentrate the liquid at the bottom.
5. Store the suspended plasmid at -20°C. The DNA is stable for at least one year from date of shipping when stored at -20°C.

**RefSeq:** [NM\\_012315.1](#), [NP\\_036447.1](#)

**RefSeq Size:** 1438 bp

**RefSeq ORF:** 753 bp

**Locus ID:** 284366

**UniProt ID:** [Q9UKQ9](#)

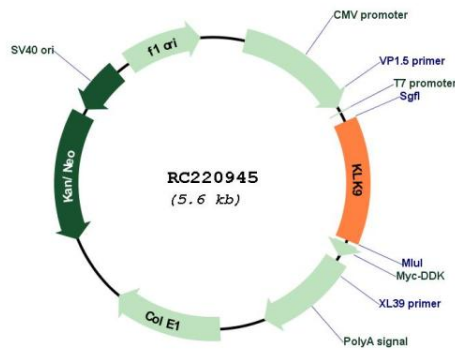
**Cytogenetics:** 19q13.41

**Protein Families:** Druggable Genome, Protease, Secreted Protein

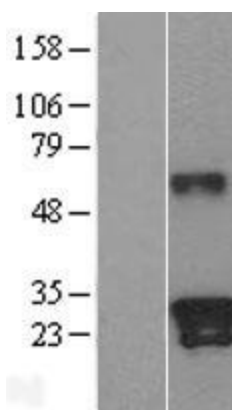
**MW:** 27.3 kDa

**Gene Summary:** The protein encoded by this gene is a kallikrein-related serine protease. This gene is activated by steroid hormones in a human breast cancer cell line, making it a good marker for cancer detection. The encoded protein is found primarily in the cytoplasm.[provided by RefSeq, Oct 2010]

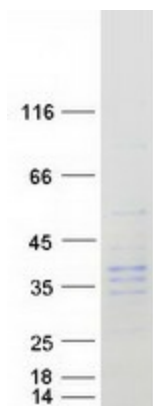
**Product images:**



Circular map for RC220945



Western blot validation of overexpression lysate (Cat# [LY402192]) using anti-DDK antibody (Cat# [TA50011-100]). Left: Cell lysates from untransfected HEK293T cells; Right: Cell lysates from HEK293T cells transfected with RC220945 using transfection reagent MegaTran 2.0 (Cat# [TT210002]).



Coomassie blue staining of purified KLK9 protein (Cat# [TP320945]). The protein was produced from HEK293T cells transfected with KLK9 cDNA clone (Cat# RC220945) using MegaTran 2.0 (Cat# [TT210002]).