

## Product datasheet for RC220943

### OGFOD2 (NM\_024623) Human Tagged ORF Clone

#### Product data:

Product Type:	Expression Plasmids
Product Name:	OGFOD2 (NM_024623) Human Tagged ORF Clone
Tag:	Myc-DDK
Symbol:	OGFOD2
Mammalian Cell Selection:	Neomycin
Vector:	pCMV6-Entry (PS100001)
E. coli Selection:	Kanamycin (25 ug/mL)
ORF Nucleotide Sequence:	>RC220943 representing NM_024623 Red=Cloning site Blue=ORF Green=Tags(s)

TTTTGTAATACGACTCACTATAGGGCGGCCGGGAATTCGTCGACTGGATCCGGTACCGAGGAGATCTGCC  
GCC**CGATCGCC**

ATGGTTGAGCTTGAGCAGGAGGTGGAGCGGCGGCAGCGGCTGGGGCAGGAGTCAGCAGCTAGGAAAGCCC  
TCATCGCGAGTTCCTACCACCCGGCACGGCCTGAGGTCTACGACTCACTGCAGGATGCAGCTCTGGCCCC  
CGAGTTCCTGGCCGTGACTGAGTACAGCGTGTCCCAGACGCAGACCTCAAGGGCCTTCTCCAGCGGCTG  
GAGACAGTATCGGAGGAGAAGCGCATCTACCGGTGCCGTGTTTTACAGCGCCCTTCTGCCAGGCCCTGC  
TGAAGAGCTGGAGCACTTCGAGCAATCGGACATGCCTAAGGGGAGGCCAACACCATGAACAACCTACGG  
GGTGTGCTGCACGAGCTCGGGCTGGACGAGCCGCTGATGACACCACTGCGGGAGCGCTTCTGCAGCCG  
CTGATGGCCCTGCTGTACCCTGACTGTGGCGGGGCGGCTCGACAGCCACCGGGCCTTTGTGGTCAAAT  
ACGCACCGGGCCAGGACCTGGAGCTGGGCTGCCACTATGATAATGCCGAGCTCACCTCAATGTGGCCTT  
GGGCAAGGTCTTACAGGGGGCGCCCTGTATTTGGGGCCTTCTCCAGGCACCCACAGCCCTGACGGAG  
CCCCTGGAGGTGGAGCACGTGGTGGCCAGGGTGTCTCCACCGTGGCGGCCAGCTGCATGGAGCCCGGC  
CCTTGGGCACTGGTGAGCGTTGGAACCTTGTGCTCTGGCTCCGAGCCTCTGCTGTGCGCAACAGCCTCTG  
TCCATGTGCTGCCGTGAGCCCGACCTGGTGGACGATGAGGGCTTCGGTATGGCTTACCCGAGAGGAG  
CCCGCCACGGTGGATGTATGTGCGCTCACC

**ACGCGT**ACGCGGGCCGCTCGAGCAGAAACTCATCTCAGAAGAGGATCTGGCAGCAAATGATATCCTGGATT  
ACAAGGATGACGACGATAAGGTTTAA



[View online »](#)

**Protein Sequence:** >RC220943 representing NM\_024623  
Red=Cloning site Green=Tags(s)

MVELEQEVERRQRLGQESAARKALIASYHPARPEVYDSLQDAALAPEFLAVTEYSVSPDADLKGLLQRL  
 ETVSEEKRIYRVPVFTAPFCQALLELEHFEQSDMPKGRPNMNNYGVLLHELGLDEPLMTPLRERFLQP  
 LMALLYPDCGGGRLDSHRAFVVKYAPGQDLELGCHYDNAELTLNVALGKVF TGGALYFGGLFQAPTALTE  
 PLEVEHVVGQVLRGGQLHGARPLGTGERWNLVVWLRASAVRNSLCPMCCREPDLDVDEGFGDGF TREE  
 PATVDVCALT

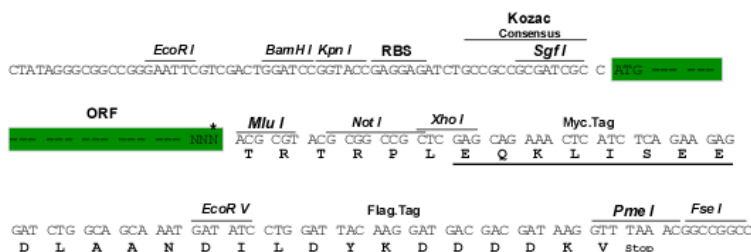
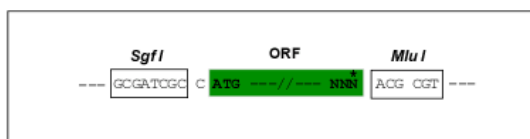
TRTRPLEQKLISEEDLANDILDYKDDDDKV

**Chromatograms:** [https://cdn.origene.com/chromatograms/mk8041\\_f04.zip](https://cdn.origene.com/chromatograms/mk8041_f04.zip)

**Restriction Sites:** SgfI-MluI

**Cloning Scheme:**

Cloning sites used for ORF Shuttling:



\* The last codon before the Stop codon of the ORF

**ACCN:** NM\_024623

**ORF Size:** 870 bp

**OTI Disclaimer:** The molecular sequence of this clone aligns with the gene accession number as a point of reference only. However, individual transcript sequences of the same gene can differ through naturally occurring variations (e.g. polymorphisms), each with its own valid existence. This clone is substantially in agreement with the reference, but a complete review of all prevailing variants is recommended prior to use. [More info](#)

**OTI Annotation:** This clone was engineered to express the complete ORF with an expression tag. Expression varies depending on the nature of the gene.

**Components:** The ORF clone is ion-exchange column purified and shipped in a 2D barcoded Matrix tube containing 10ug of transfection-ready, dried plasmid DNA (reconstitute with 100 ul of water).

**Reconstitution Method:**

1. Centrifuge at 5,000xg for 5min.
2. Carefully open the tube and add 100ul of sterile water to dissolve the DNA.
3. Close the tube and incubate for 10 minutes at room temperature.
4. Briefly vortex the tube and then do a quick spin (less than 5000xg) to concentrate the liquid at the bottom.
5. Store the suspended plasmid at -20°C. The DNA is stable for at least one year from date of shipping when stored at -20°C.

**RefSeq:** [NM\\_024623.3](#)

**RefSeq Size:** 2080 bp

**RefSeq ORF:** 873 bp

**Locus ID:** 79676

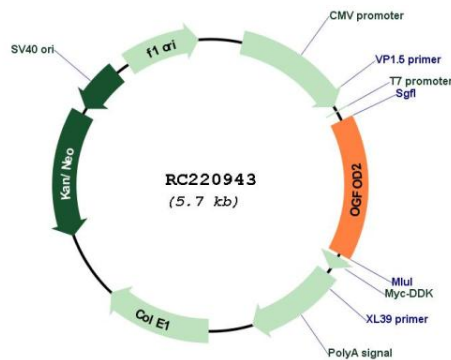
**UniProt ID:** [Q6N063](#)

**Cytogenetics:** 12q24.31

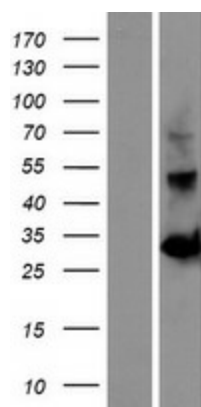
**Domains:** 2OG-Fell\_Oxy, P4Hc

**MW:** 31.9 kDa

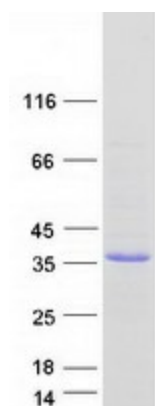
**Product images:**



Circular map for RC220943



Western blot validation of overexpression lysate (Cat# [LY411187]) using anti-DDK antibody (Cat# [TA50011-100]). Left: Cell lysates from untransfected HEK293T cells; Right: Cell lysates from HEK293T cells transfected with RC220943 using transfection reagent MegaTran 2.0 (Cat# [TT210002]).



Coomassie blue staining of purified OGFOD2 protein (Cat# [TP320943]). The protein was produced from HEK293T cells transfected with OGFOD2 cDNA clone (Cat# RC220943) using MegaTran 2.0 (Cat# [TT210002]).