

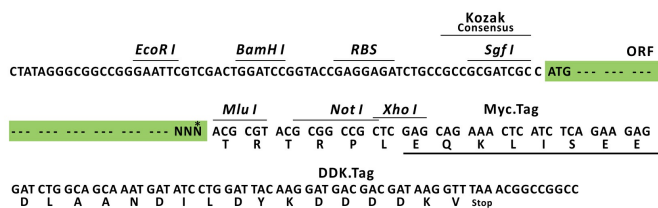
Product datasheet for RC220942L1

CT45A2 (NM_152582) Human Tagged Lenti ORF Clone

Product data:

Product Type:	Expression Plasmids
Product Name:	CT45A2 (NM_152582) Human Tagged Lenti ORF Clone
Tag:	Myc-DDK
Symbol:	CT45A2
Synonyms:	CT45-2; CT45.2; CT45A8; CT45A9
Mammalian Cell Selection:	None
Vector:	pLenti-C-Myc-DDK (PS100064)
E. coli Selection:	Chloramphenicol (34 ug/mL)
ORF Nucleotide Sequence:	The ORF insert of this clone is exactly the same as(RC220942).
Restriction Sites:	SgfI-MluI
Cloning Scheme:	

Cloning sites used for ORF Shuttling:



* The last codon before the Stop codon of the ORF.

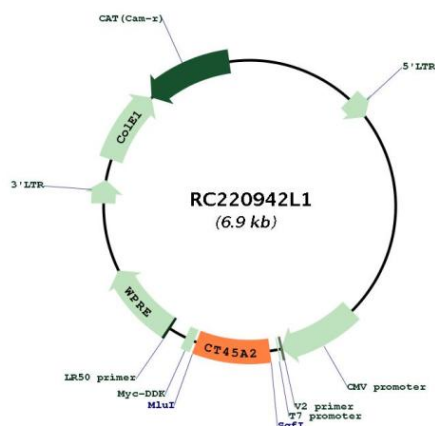
ACCN:	NM_152582
ORF Size:	567 bp



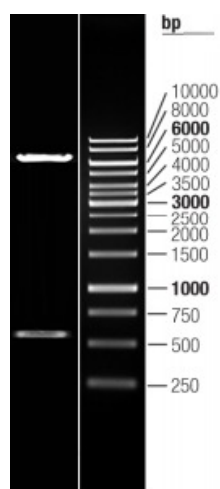
[View online »](#)

OTI Disclaimer:	The molecular sequence of this clone aligns with the gene accession number as a point of reference only. However, individual transcript sequences of the same gene can differ through naturally occurring variations (e.g. polymorphisms), each with its own valid existence. This clone is substantially in agreement with the reference, but a complete review of all prevailing variants is recommended prior to use. More info
OTI Annotation:	This clone was engineered to express the complete ORF with an expression tag. Expression varies depending on the nature of the gene.
Components:	The ORF clone is ion-exchange column purified and shipped in a 2D barcoded Matrix tube containing 10ug of transfection-ready, dried plasmid DNA (reconstitute with 100 ul of water).
Reconstitution Method:	<ol style="list-style-type: none"> 1. Centrifuge at 5,000xg for 5min. 2. Carefully open the tube and add 100ul of sterile water to dissolve the DNA. 3. Close the tube and incubate for 10 minutes at room temperature. 4. Briefly vortex the tube and then do a quick spin (less than 5000xg) to concentrate the liquid at the bottom. 5. Store the suspended plasmid at -20°C. The DNA is stable for at least one year from date of shipping when stored at -20°C.
RefSeq:	NM_152582.3
RefSeq Size:	1032 bp
RefSeq ORF:	570 bp
Locus ID:	728911
UniProt ID:	Q5DJT8
Cytogenetics:	Xq26.3
MW:	21.1 kDa
Gene Summary:	This gene represents one of a cluster of several similar genes located on the q arm of chromosome X. The genes in this cluster encode members of the cancer/testis (CT) family of antigens, and are distinct from other CT antigens. These antigens are thought to be novel therapeutic targets for human cancers. [provided by RefSeq, Apr 2014]

Product images:



Circular map for RC220942L1



Double digestion of RC220942L1 using SgfI and MluI