

Product datasheet for **RC220935**

SYNC (NM_030786) Human Tagged ORF Clone

Product data:

Product Type: Expression Plasmids
Product Name: SYNC (NM_030786) Human Tagged ORF Clone
Tag: Myc-DDK
Symbol: SYNC
Synonyms: SYNC1; SYNCOILIN
Mammalian Cell Selection: Neomycin
Vector: pCMV6-Entry (PS100001)
E. coli Selection: Kanamycin (25 ug/mL)
ORF Nucleotide Sequence: >RC220935 ORF sequence
 Red=Cloning site Blue=ORF Green=Tags(s)

TTTTGTAATACGACTCACTATAGGGCGGCCGGAATTCGTCGACTGGATCCGGTACCGAGGAGATCTGCC
 GCC**CGGATCGCC**

ATGGCAGAGAGCCGCCAGGACCTGGAGGAGGAGTATGAGCCTCAGTTCCTGCGGCTCCTAGAGAGGAAAG
 AAGCTGGGACCAAAGCTCTGCAGAGAACCCAGGCTGAGATCCAGGAAATGAAGGAGGCTCTGAGACCCCT
 GCAAGCAGAGGCCCGGCAGCTCCGCCTGCAAAACAGGAACCTGGAGGACCAGATCGCACTTGTGAGGCAA
 AAACGAGATGAAGAGGTGCAGCAGTACAGGGAACAGCTGGAGGAAATGGAAGAACGCCAGAGGCAGTTAA
 GAAATGGGGTGCAACTCCAGCAACAGAAGAACAAGAGATGGAACAGCTAAGGCTCAGTCTTGCTGAAGA
 GCTCTCTACTTATAAGGCTATGCTACTACCAAGAGCCTGGAACAGGCTGATGCTCCCACTTCTCAGGCA
 GGTGGAATGGAGACACAGTCTCAAGGGGCTGTT

ACGCGTACGCGGCCGCTCGAGCAGAACTCATCTCAGAAGAGGATCTGGCAGCAAATGATATCCTGGATT
 ACAAGGATGACGACGATAAGGTTTAA

Protein Sequence: >RC220935 protein sequence
 Red=Cloning site Green=Tags(s)

MAESRQDLEEEYEPQFLRLLEKEAGTKALQRTQAEIQEMKEALRPLQAEARQLRLQNRNLEDQIALVRQ
 KRDEEVQYREQLEEMEERQRLRNGVQLQQQKNKEMEQLRLSLAEELSTYKAMLLPKSLEQADAPTSQA
 GGMETQSQGAV

TRTRPLEQKLISEEDLAANDILDYKDDDDKV

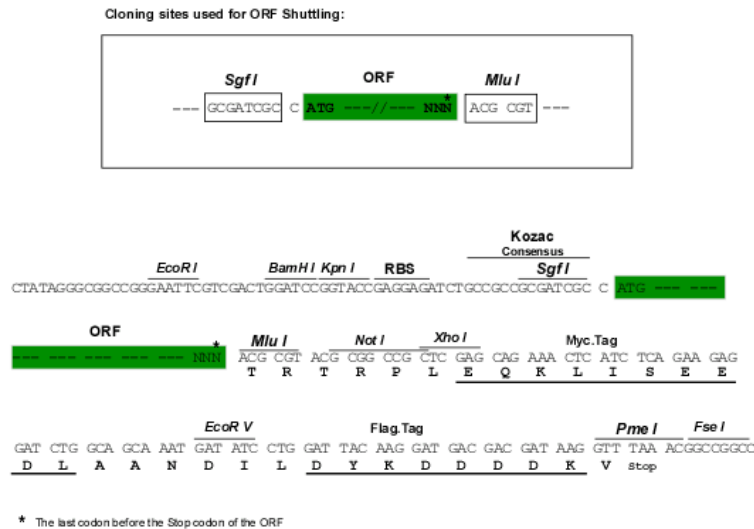
Chromatograms: https://cdn.origene.com/chromatograms/mk6443_f07.zip



View online »

Restriction Sites: SgfI-MluI

Cloning Scheme:



ACCN: NM_030786

ORF Size: 453 bp

OTI Disclaimer: The molecular sequence of this clone aligns with the gene accession number as a point of reference only. However, individual transcript sequences of the same gene can differ through naturally occurring variations (e.g. polymorphisms), each with its own valid existence. This clone is substantially in agreement with the reference, but a complete review of all prevailing variants is recommended prior to use. [More info](#)

OTI Annotation: This clone was engineered to express the complete ORF with an expression tag. Expression varies depending on the nature of the gene.

Components: The ORF clone is ion-exchange column purified and shipped in a 2D barcoded Matrix tube containing 10ug of transfection-ready, dried plasmid DNA (reconstitute with 100 ul of water).

Reconstitution Method:

1. Centrifuge at 5,000xg for 5min.
2. Carefully open the tube and add 100ul of sterile water to dissolve the DNA.
3. Close the tube and incubate for 10 minutes at room temperature.
4. Briefly vortex the tube and then do a quick spin (less than 5000xg) to concentrate the liquid at the bottom.
5. Store the suspended plasmid at -20°C. The DNA is stable for at least one year from date of shipping when stored at -20°C.

Note: Plasmids are not sterile. For experiments where strict sterility is required, filtration with 0.22um filter is required.

RefSeq: [NM_030786.1](#), [NP_110413.1](#)

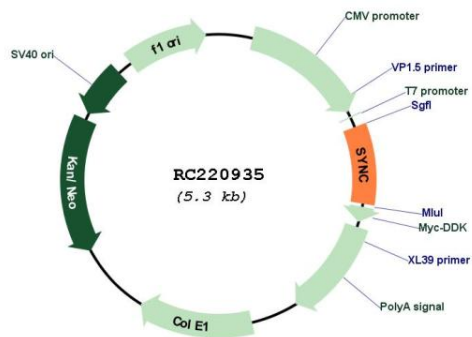
RefSeq Size: 3493 bp

RefSeq ORF: 1449 bp

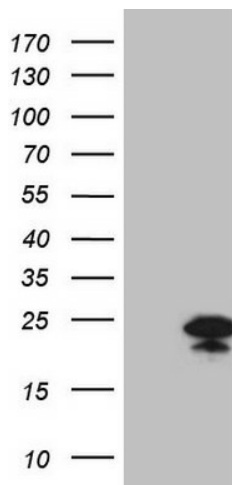
Locus ID: 81493
UniProt ID: [Q9H7C4](#)
Cytogenetics: 1p35.1
MW: 17.7 kDa

Gene Summary: This gene encodes a member of the intermediate filament family which contains an N-terminal head domain, followed by a central coiled-coil region and a short C-terminal tail. The protein is highly expressed in skeletal and cardiac muscle. The protein links the dystrophin associated protein complex (DAPC) to desmin filaments in muscle and may have a structural role in striated muscle. Multiple transcript variants encoding different isoforms have been found for this gene. [provided by RefSeq, Jun 2009]

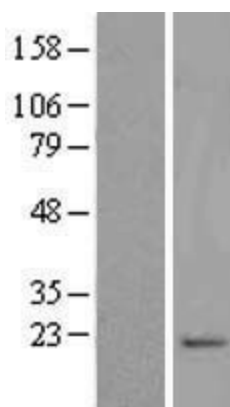
Product images:



Circular map for RC220935



HEK293T cells were transfected with the pCMV6-ENTRY control (Cat# [PS100001], Left lane) or pCMV6-ENTRY SYNC (Cat# RC220935, Right lane) cDNA for 48 hrs and lysed. Equivalent amounts of cell lysates (5 ug per lane) were separated by SDS-PAGE and immunoblotted with anti-SYNC (Cat# [TA809588])(1:2000). Positive lysates [LY410708] (100ug) and [LC410708] (20ug) can be purchased separately from OriGene.



Western blot validation of overexpression lysate (Cat# [LY410708]) using anti-DDK antibody (Cat# [TA50011-100]). Left: Cell lysates from untransfected HEK293T cells; Right: Cell lysates from HEK293T cells transfected with RC220935 using transfection reagent MegaTran 2.0 (Cat# [TT210002]).