

## Product datasheet for **RC220922**

### CCDC19 (CFAP45) (NM\_012337) Human Tagged ORF Clone

#### Product data:

Product Type:	Expression Plasmids
Product Name:	CCDC19 (CFAP45) (NM_012337) Human Tagged ORF Clone
Tag:	Myc-DDK
Symbol:	CCDC19
Synonyms:	CCDC19; NESG1
Mammalian Cell Selection:	Neomycin
Vector:	pCMV6-Entry (PS100001)
E. coli Selection:	Kanamycin (25 ug/mL)



[View online »](#)

ORF Nucleotide  
Sequence:

>RC220922 representing NM\_012337  
 Red=Cloning site Blue=ORF Green=Tags(s)

CTATAGGGCGGCCGGGAATTCGTCTGACTGGATCCGGTACCGAGGAGATCTGCCGCCGCGATCGCCGGCGC  
 GCCC

ATGCCACTAAGCACAGCTGGCATCTGAGCTCCTCTTCTGCCCTTCCAACAGGTCAAGGAATAAGGCTC  
 GCTATCGGACCAAGCCGTGAGCTCTGAGGTGGATGAGAGCCTCTTTGGAGATATCAAGTCCCCAGCCCA  
 GGGCCAGAGCGACAGCCCATTTGTGCTGCTCCGAGATAAGCATACCCCTCAAAAACTCTCACTGCTTTG  
 GGCTTGGATCGCAAGCCAGAGACCATCCAGCTCATCACCCGGGACATGGTCCGAGAACTCATTGTTCCCA  
 CAGAGGATCCCTCCGGGAGTCCCTAATCATCAGCCCTGAGGAGTTTGGAGCAATCAAAATGGGCATCCCA  
 TGTCTGACCAGAGAAGAACTTGAAGCCAGGGACCAGGCCTTCAAGAAGGAGAAGGAAGCCACCATGGAT  
 GCAGTGATGACACGAAAGAAGATCATGAAACAGAAGGAGATGGTGTGGAACAACAAGAAGCTCAGTG  
 ACCTGGAGGAGGTGGCCAAGGAACGGGCCAGAACCTCCTGCAGAGAGCCAACAAGCTGCGGATGGAGCA  
 GGAGGAGGAGCTCAAGGACATGAGCAAGATTATCCTCAATGCTAAGTGCCATGCCATCCGGGATGCCCAA  
 ATCCTGGAGAAGCAGCAGATCCAAAAAGAACTGGACACAGAAGAGAAGCGGTTGGATCAGATGATGGAAG  
 TGGAGCGGCAGAAATCCATTCAAAGGCAGGAGGAACTGGAGAGGAAGAGGAGGGAGGAAAGAATTAGAGG  
 AAGGCGGCAAAATTTGTGGAACAGATGGAAGAAACCAGGAGGAGCGATCGCTGCTTGTGAGCAGCGGGAG  
 CAGGAGAAGGAGCAGATGCTGGAATATATGGAACAGCTCCAAGAGGAAGATCTAAAGGACATGGAACGAA  
 GGCAGCAACAAAACTGAAGATGCAAGCTGAGATTAAGCGCATCAATGATGAAAACAGAAAACAGAAAGC  
 AGAACTGCTGGCTCAGGAGAAGCTGGCAGACCAGATGGTATGGAGTTTACCAAGAAGAAGATGGCTCGA  
 GAAGCAGAGTTTGGAGCTGAGCAGGAGAGAATCCGGAGGGAGAAGAGAAGGAGATCGCACGCTTGGAGG  
 CCATGCAGGAGAAGGCCAGGATTACCAGGCAGAACAGGATGCCTTGGCGGCAAGCGCAACCAGGAGGT  
 TGCAGACAGAGAGTGGCGCAGAAAAGGAAAAGAAAATGCGCGGAAGAAGATGGAACAGAGGCTGAGCTG  
 CGAAAAAGTCCGCTCGAACAGGTGGCTTCAAGGAGCACGCTCTGGCTGTTCAAGGTGCAACGGGACCGGG  
 ATGAGTTCGAGAGGATTCTTCGGCTCAGAGAGAACAGATTGAGAAGGAGCGGCTGGAGGAGGAGAAAAA  
 GGCCACAGGGCGTTACAGCATGCCAATGAGCTCCGGCGCCAGGTGCGCGAGAACCAGCAGAAAGGAAAGT  
 CAGAACCGGATTGCCACCTTTGAGGAGGGCCGGCGCTCAAAGAGGAGGCCAGAACCGCTGAGCGCA  
 TCGATGAGATCAAGAGGAAAAAGCTTGAAGAGCTGAGAGCCACTGGCCTTCCCGAGAAGTACTGCATTGA  
 AGCTGAGCGCAAAGCTAACATCCTGCCAGCTACCTCTGTGAAC

ACGCGTACGCGGCCGCTCGAGCAGAACTCATCTCAGAAGAGGATCTGGCAGCAAATGATATCCTGGATT  
 ACAAGGATGACGACGATAAGGTTTAA

## Protein Sequence:

>RC220922 representing NM\_012337  
 Red=Cloning site Green=Tags(s)

MPLSTAGILSSSSAASNRSRNKARYRTKAVSSEVDESLFGDIKSPAQQSDSPIVLLRDKHTLQKTLTAL  
 GLDRKPETIQLITRDMVRELIVPTEDPSGESLIISPEEFERIKWASHVLTREELEARDQAFKKEKEATMD  
 AVMTRKKIMKQKEMVWNNKLSLEEVAKERAQNLLQRANKLRMEQEEELKDMSKIILNAKCHAIRDAQ  
 ILEKQQIQKELDTEEKRLDQMMEVERQKSIQRQEELERKRREERIRGRRQIVEQMEKNQEERSLLAEQRE  
 QEKEQMLEYMEQLQEEDLKMERRQQQLKMQAEIKRINDENQKQKAELLAQEKLADQMVEFTKKMAR  
 EAEFEAEQERIRREKEKEIARLRAMQEKAQDYQAEQDALRAKRNQEVADREWRRKEKENARKKMETEAE  
 RKSRLQVAFKEHALAVQVQRDRDEFERILRAQREQIEKERLEEEKATGRLQHANELRRQVRENQQKEV  
 QNRIATFEEGRRLKEEAQKRRERIDEIKRKKLEELRATGLPEKYCIEAERKANILPATSVN

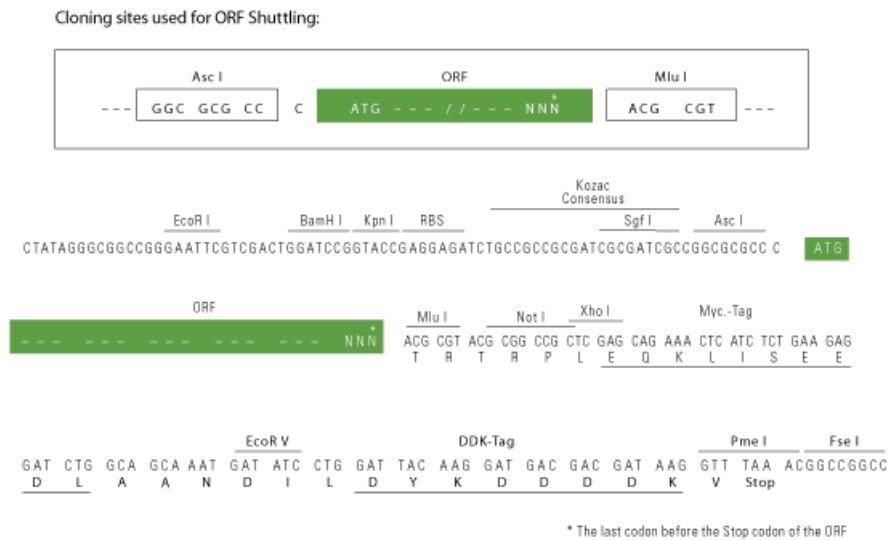
TRTRPLEQKLISEEDLAANDILDYKDDDDKV

## Chromatograms:

[https://cdn.origene.com/chromatograms/mk8041\\_f09.zip](https://cdn.origene.com/chromatograms/mk8041_f09.zip)

## Restriction Sites:

AscI-MluI

**Cloning Scheme:**


**ACCN:** NM\_012337

**ORF Size:** 1653 bp

**OTI Disclaimer:** The molecular sequence of this clone aligns with the gene accession number as a point of reference only. However, individual transcript sequences of the same gene can differ through naturally occurring variations (e.g. polymorphisms), each with its own valid existence. This clone is substantially in agreement with the reference, but a complete review of all prevailing variants is recommended prior to use. [More info](#)

**OTI Annotation:** This clone was engineered to express the complete ORF with an expression tag. Expression varies depending on the nature of the gene.

**Components:** The ORF clone is ion-exchange column purified and shipped in a 2D barcoded Matrix tube containing 10ug of transfection-ready, dried plasmid DNA (reconstitute with 100 ul of water).

**Reconstitution Method:**

1. Centrifuge at 5,000xg for 5min.
2. Carefully open the tube and add 100ul of sterile water to dissolve the DNA.
3. Close the tube and incubate for 10 minutes at room temperature.
4. Briefly vortex the tube and then do a quick spin (less than 5000xg) to concentrate the liquid at the bottom.
5. Store the suspended plasmid at -20°C. The DNA is stable for at least one year from date of shipping when stored at -20°C.

**RefSeq:** [NM\\_012337.3](#)

**RefSeq Size:** 1836 bp

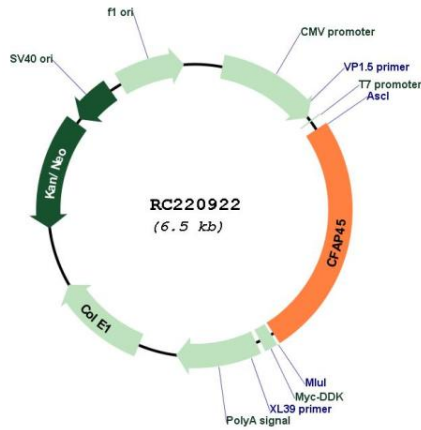
**RefSeq ORF:** 1656 bp

**Locus ID:** 25790

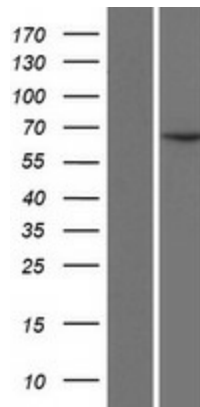
**UniProt ID:** [Q9UL16](#)

Cytogenetics: 1q23.2  
 MW: 65.5 kDa

**Product images:**



Circular map for RC220922



Western blot validation of overexpression lysate (Cat# [LY415833]) using anti-DDK antibody (Cat# [TA50011-100]). Left: Cell lysates from untransfected HEK293T cells; Right: Cell lysates from HEK293T cells transfected with RC220922 using transfection reagent MegaTran 2.0 (Cat# [TT210002]).