

## Product datasheet for **RC220920**

### **NRP2 (NM\_201266) Human Tagged ORF Clone**

#### **Product data:**

Product Type:	Expression Plasmids
Product Name:	NRP2 (NM_201266) Human Tagged ORF Clone
Tag:	Myc-DDK
Symbol:	NRP2
Synonyms:	NP2; NPN2; PRO2714; VEGF165R2
Mammalian Cell Selection:	Neomycin
Vector:	pCMV6-Entry (PS100001)
E. coli Selection:	Kanamycin (25 ug/mL)



[View online »](#)

**ORF Nucleotide Sequence:**

>RC220920 representing NM\_201266  
 Red=Cloning site Blue=ORF Green=Tags(s)

TTTTGTAATACGACTCACTATAGGGCGGCCGGAATTCGTCGACTGGATCCGGTACCGAGGAGATCTGCC  
 GCC**CGGATCGCC**

ATGGATATGTTTCTCTCACCTGGGTTTTCTTAGCCCTCTACTTTTCAAGACACCAAGTGAGAGGCCAAC  
 CAGACCCACCGTGCAGAGTCTGTTGAATTCAAAGATGCTGGCTATATCACCTCTCCCGTTACCCCA  
 GGACTACCCCTCCACCAGAAGTGCAGTGGATTGTTTACGCCCCGAACCAACCAAGAAGATTGCCTC  
 AACTTCAACCCTCACTTTGAAATCGAGAAGCAGACTGCAAGTATGACTTTATCGAGATTCGGGATGGG  
 ACAGTGAATCCGCAGACCTCTGGGCAAACTGTGGAAACATCGCCCCGCCACCATCATCTCTCGGG  
 CTCCATGCTCTACATCAAGTTCACCTCCGACTACGCCCGCAGGGGGCAGGCTTCTCTGCGCTACGAG  
 ATCTTCAAGACAGGCTCTGAAGATTGCTCAAAAACTTACAAGCCCCAACGGGACCATCGAATCTCCTG  
 GGTTTCTGAGAAGTATCCACACAACCTGGACTGCACCTTACCATCCTGGCCAAACCAAGATGGAGAT  
 CATCTGCAGTTCCTGATCTTTGACCTGGAGCATGACCTTTGCAGGTGGGAGAGGGGACTGCAAGTAC  
 GATTGGCTGGACATCTGGGATGGCATTCCACATGTTGGCCCCCTGATTGGCAAGTACTGTGGGACAAAA  
 CACCCTCTGAACCTCGTTTCATCGACGGGATCCTCTCCCTGACCTTTCACACGGACATGGCGGTGGCCAA  
 GGATGGCTTCTCTGCGGTTACTACCTGGTCCACCAAGAGCCACTAGAGAACCTTTCAGTGAATGTTCT  
 CTGGGCATGGAGTCTGGCCGGATTGCTAATGAACAGATCAGTGCCTCATCTACCTACTCTGATGGGAGGT  
 GGACCCCTCAACAAAGCCGGCTCCATGGTGTGACAATGGCTGGACCCCAACTTGGATTCCAACAAGGA  
 GTATCTCCAGGTGGACCTGCGCTTTTTAACCATGCTCACGGCCATCGAACACAGGGAGCGATTTCCAGG  
 GAAACACAGAATGGTACTATGTCAAATCTACAAGCTGGAAGTCAGACTAATGGAGAGGACTGGATGG  
 TGTACCGGCATGGCAAAAACACAAGGTATTTCAAGCAACAACGATGCAACTGAGTGGTTCTGAACAA  
 GCTCCACGCTCCACTGCTGACAAGGTTTGTAGAAATCCGCCCTCAGACCTGGCACTCAGGTATCGCCCTC  
 CGGCTGGAGCTCTTCGGCTGCCGGTACAGATGCTCCCTGCTCCAACATGCTGGGGATGCTCTCAGGCC  
 TCATTGCAGACTCCAGATCTCCGCTCTTCCACCCAGGAATACCTCTGGAGCCCCAGTGCAGCCCGCT  
 GGTGAGCAGCCGCTCGGGCTGGTCCCTCGAATCCCTCAGGCCAGCCCGGTGAGGAGTGGCTTCAGGTA  
 GATCTGGGAACACCAAGACAGTAAAGGTGTCATCATCCAGGGAGCCCGGAGGAGACAGTATCACTG  
 CTGTGGAAGCCAGAGCATTGTGCGCAAGTTCAAAGTCTCTACAGCCTAAACGGCAAGGACTGGGAATA  
 CATTGAGGACCCAGGACCCAGCAGCCAAAGCTGTTGAAAGGAAACATGCACTATGACACCCCTGACATC  
 CGAAGGTTTGACCCATTCCGGCACAGTATGTGCGGGTATACCCGGAGAGGTGGTCCGCCGGGGATTG  
 GGATGCGGCTGGAGGTGCTGGGCTGTGACTGGACAGACTCCAAGCCACGGTAGAGACGCTGGGACCCAC  
 TGTGAAGAGCGAAGAGACAACCACCCCTACCCACCGAAGAGGAGGCCACAGAGTGTGGGGAGAACTGC  
 AGCTTTGAGGATGACAAAGATTTGCAGCTCCCTTCGGGATTCAATTGCAACTTCGATTTCTCGAGGAGC  
 CCTGTGGTTGGATGTATGACCATGCCAAGTGGCTCCGGACCACCTGGGCCAGCAGCTCCAGCCAAACGA  
 CCGGACGTTTCCAGATGACAGGAATTTCTTGGGCTGCAGAGTGCAGCCAGAGAGAGGGCCAGTATGCC  
 CGGCTCATCAGCCCCCTGTCCACCTGCCCCGAAGCCCGGTGTGCATGGAGTCCAGTACCAGGCCACGG  
 GCGGCCCGGGGTGGCGCTGCAGGTGGTGGGAAAGCCAGCCAGGAGAGCAAGTTGCTGTGGTTCATCCG  
 TGAGGACCAGGGCGGCGAGTGGAAAGCACGGGCGGATCATCTGCCAGCTACGACATGGAGTACCAGATT  
 GTTTTCGAGGGAGTGATAGGGAAAAGGACGTTCCGGAGAGATTGCCATTGATGACATTCGATAAGCACTG  
 ATGTCCCACTGGAGAAGTGCATGGAACCATCTCGGCTTTTGCAGGTGAGAATTTTAAAGTGGACATCCC  
 AGAAATACATGAGAGAGAAGGATATGAAGATGAAATTGATGATGAATACGAGGTGGACTGGAGCAATTCT  
 TCTTCTGCAACCTCAGGGTCTGGCGCCCCCTCGACCGACAAGAAAAGAGCTGGCTGTACACCCTGGATC  
 CCATCCTCATACCATCATCGCCATGAGCTCACTGGGCGTCTCTGGGGCCACCTGTGCAGGCCCTCT  
 GCTCTACTGCACCTGTTCTACTCGGCCTGAGCTCCCGAAGCTGCACCACACTGGAGAACTACAATTC  
 GAGCTCTACGATGGCCTTAAGCACAAAGTCAAGATGAACCACCAAAAGTCTGCTCCGAGGCA

**ACGCGT**ACGCGGCCGCTCGAGCAGAAACTCATCTCAGAAGAGGATCTGGCAGCAAATGATATCTGGATT  
 ACAAGGATGACGACGATAAGGTTTAA

**Protein Sequence:** >RC220920 representing NM\_201266  
 Red=Cloning site Green=Tags(s)

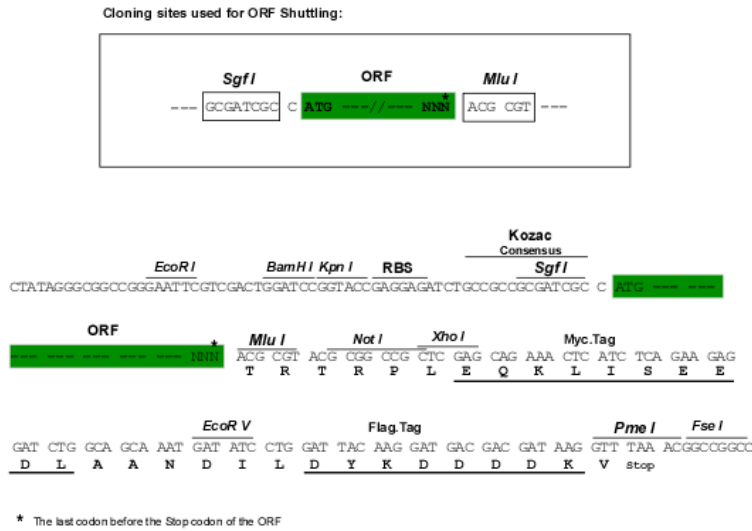
MTFYSPAVMNYSVPGSTSNLDGGPVRLSTSPNVLWPTSGHLSPLATHCQSSLLYAEPQKSPWCEARSLEH  
 TLPVNRRETLKRKLSGSSCASPVTSPNAKRDAHFPCVSDYASGYHYGVWSCEGCKAFFKRSIQGHNDYIC  
 PATNQCTIDKNRRKSCQACRLRKCYEVMVKCGSRRRCGYRIVRRQRSSSEQVHCLSKAKRNGGHAPRV  
 KELLSTLSPEQLVLTLLAEAPPNVLVSRPSMPFTEASMMMSLTKLADKELVHMIGWAKKIPGFVELSLL  
 DQVRLLESCWMEVLMVGLMWRSIDHPGKLIFAPDLVDRDEGKCEGILEIFDMLLATTSRFRELKLQHK  
 EYLCVKAMILLNSSMYPLASANQEAESSRKLTHLLNAVTDALVWVIAKSGISSQQQSVRLANLLMLLSHV  
 RHISNKMEHLLSMKCKNVVPVYDLLLEMLNAHTLRGYKSSISGSECSSTEDSKNKESSQNLQSQ

TRTRPLEQKLISEEDLAANDILDYKDDDDKV

**Chromatograms:** [https://cdn.origene.com/chromatograms/mg2643\\_d01.zip](https://cdn.origene.com/chromatograms/mg2643_d01.zip)

**Restriction Sites:** SgfI-MluI

**Cloning Scheme:**

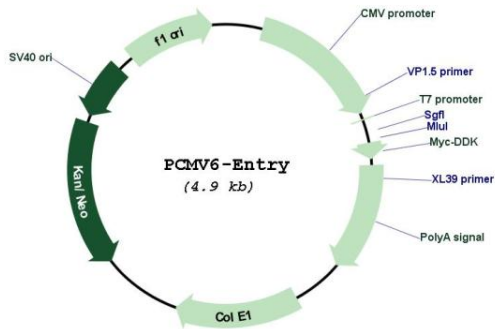


**ACCN:** NM\_201266

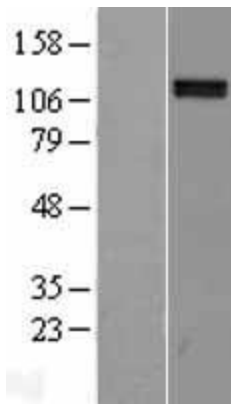
**ORF Size:** 2793 bp

<b>OTI Disclaimer:</b>	The molecular sequence of this clone aligns with the gene accession number as a point of reference only. However, individual transcript sequences of the same gene can differ through naturally occurring variations (e.g. polymorphisms), each with its own valid existence. This clone is substantially in agreement with the reference, but a complete review of all prevailing variants is recommended prior to use. <a href="#">More info</a>
<b>OTI Annotation:</b>	This clone was engineered to express the complete ORF with an expression tag. Expression varies depending on the nature of the gene.
<b>Components:</b>	The ORF clone is ion-exchange column purified and shipped in a 2D barcoded Matrix tube containing 10ug of transfection-ready, dried plasmid DNA (reconstitute with 100 ul of water).
<b>Reconstitution Method:</b>	<ol style="list-style-type: none"><li>1. Centrifuge at 5,000xg for 5min.</li><li>2. Carefully open the tube and add 100ul of sterile water to dissolve the DNA.</li><li>3. Close the tube and incubate for 10 minutes at room temperature.</li><li>4. Briefly vortex the tube and then do a quick spin (less than 5000xg) to concentrate the liquid at the bottom.</li><li>5. Store the suspended plasmid at -20°C. The DNA is stable for at least one year from date of shipping when stored at -20°C.</li></ol>
<b>Note:</b>	Plasmids are not sterile. For experiments where strict sterility is required, filtration with 0.22um filter is required.
<b>RefSeq:</b>	<a href="#">NM_201266.1</a> , <a href="#">NP_957718.1</a>
<b>RefSeq Size:</b>	6671 bp
<b>RefSeq ORF:</b>	2796 bp
<b>Locus ID:</b>	8828
<b>UniProt ID:</b>	<a href="#">O60462</a>
<b>Cytogenetics:</b>	2q33.3
<b>Protein Families:</b>	Druggable Genome, Transmembrane
<b>MW:</b>	102.3 kDa
<b>Gene Summary:</b>	This gene encodes a member of the neuropilin family of receptor proteins. The encoded transmembrane protein binds to SEMA3C protein {sema domain, immunoglobulin domain (Ig), short basic domain, secreted, (semaphorin) 3C} and SEMA3F protein {sema domain, immunoglobulin domain (Ig), short basic domain, secreted, (semaphorin) 3F}, and interacts with vascular endothelial growth factor (VEGF). This protein may play a role in cardiovascular development, axon guidance, and tumorigenesis. Multiple transcript variants encoding distinct isoforms have been identified for this gene. [provided by RefSeq, Jul 2008]

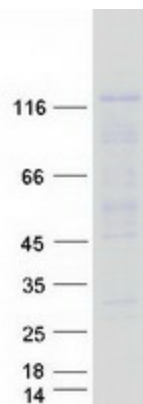
Product images:



Circular map for RC220920



Western blot validation of overexpression lysate (Cat# [LY403706]) using anti-DDK antibody (Cat# [TA50011-100]). Left: Cell lysates from untransfected HEK293T cells; Right: Cell lysates from HEK293T cells transfected with RC220920 using transfection reagent MegaTran 2.0 (Cat# [TT210002]).



Coomassie blue staining of purified NRP2 protein (Cat# [TP320920]). The protein was produced from HEK293T cells transfected with NRP2 cDNA clone (Cat# RC220920) using MegaTran 2.0 (Cat# [TT210002]).

