

Product datasheet for **RC220917**

RAB6D (NM_001077637) Human Tagged ORF Clone

Product data:

Product Type:	Expression Plasmids
Product Name:	RAB6D (NM_001077637) Human Tagged ORF Clone
Tag:	Myc-DDK
Symbol:	RAB6D
Synonyms:	RAB6CL; WTH3DI
Mammalian Cell Selection:	Neomycin
Vector:	pCMV6-Entry (PS100001)
E. coli Selection:	Kanamycin (25 ug/mL)
ORF Nucleotide Sequence:	>RC220917 representing NM_001077637 Red=Cloning site Blue=ORF Green=Tags(s)

TTTTGTAATACGACTCACTATAGGGCGGCCGGAATTCGTCGACTGGATCCGGTACCGAGGAGATCTGCC
GCC**CGATCGCC**

ATGTCCGCGGGCGGAGACTTCGGGAATCCGCTGAGGAAATCAAGCTGGTGTTCCTGGGGGAGCAAAGCG
TTGCAAAGACATCTTTGATCACCAGATTCAGGTATGACAGTTTTGACAACACCTATCAGGCAATAATTGG
CATTGACTTTTTATCAAAAATGTACTTGGAGGATGGAACAATCGGGCTTCGGCTGTGGGATACGGCG
GGTCAGGAACGTCTCCGTAGCCTCATTCCAGGTACATCCGTGATTCTGCTGCAGCTGTAGTAGTTTACG
ATATCACAAATGTTAACTCATTCCAGCAAACACAAAGTGGATTGATGATGTCAGAACAGAAGGAGGAAG
TGATGTTATCATCAGCTAGTAGGAAATAAACAGATCTTGCTGACAAGAGGCAAGTGCAATTGAGGAG
GGAGAGAGGAAAGCCAAAGGGCTGAATGTTACGTTTTATTGAAACTAGGGCAAAGCTGGATACAATGTAA
AGCAGCTCTTTCGACGTGTAGCAGCAGCTTTGCCGGGAATGGAAGCACACAGGACGGAAGCAGAGAAGA
CATGAGTGACATAAACTGGAAAAGCCTCAGGAGCAAACAGTCAGCGAAGGGGGTTGTTCTGCTACTCT
CCCATGTCATCTTCAACCCTTCCCTCAGAAGCCCCCTTACTCTTTCATTGACTGCAGTGTGAATATTGGCT
TGAACCTTTCCCTTCATTAATAACGTTTTGCAATTCATCATTGCTGCCTGTCTCGTGGAGA

ACGCGTACGCGGCCGCTCGAGCAGAACTCATCTCAGAAGAGGATCTGGCAGCAAATGATATCCTGGATT
ACAAGGATGACGACGATAAGGTTTAA



[View online »](#)

Protein Sequence: >RC220917 representing NM_001077637
Red=Cloning site Green=Tags(s)

MSAGGDFGNPLRKFKLVFLGEQSVAKTSLITFRYDSFDNTYQAIIGIDFLSKTMYLEDGTIGLRLWDTA
 GQERLRLSLIPRYIRDSAAAVVVYDITNVNSFQQTTKWIDDVRTEGGSDVIITLVGNKTDLADKRQVSIIE
 GERKAKGLNVTFIETRAKAGYNVKQLFRRVAAAALPGMESTQDGSREDMSDIKLEKPEQTVSEGGCSCYS
 PMSSTLPQKPPYSFIDCSVNIIGNLFP SLITFCNSSLLPVSWR

TRTRPLEQKLISEEDLAANDILDYKDDDDKV

Chromatograms: https://cdn.origene.com/chromatograms/mk8041_f10.zip

Restriction Sites: SgfI-MluI

Cloning Scheme:



ACCN: NM_001077637

ORF Size: 762 bp

OTI Disclaimer: The molecular sequence of this clone aligns with the gene accession number as a point of reference only. However, individual transcript sequences of the same gene can differ through naturally occurring variations (e.g. polymorphisms), each with its own valid existence. This clone is substantially in agreement with the reference, but a complete review of all prevailing variants is recommended prior to use. [More info](#)

OTI Annotation: This clone was engineered to express the complete ORF with an expression tag. Expression varies depending on the nature of the gene.

Components: The ORF clone is ion-exchange column purified and shipped in a 2D barcoded Matrix tube containing 10ug of transfection-ready, dried plasmid DNA (reconstitute with 100 ul of water).

Reconstitution Method:

1. Centrifuge at 5,000xg for 5min.
2. Carefully open the tube and add 100ul of sterile water to dissolve the DNA.
3. Close the tube and incubate for 10 minutes at room temperature.
4. Briefly vortex the tube and then do a quick spin (less than 5000xg) to concentrate the liquid at the bottom.
5. Store the suspended plasmid at -20°C. The DNA is stable for at least one year from date of shipping when stored at -20°C.

RefSeq: [NM_001077637.3](#)

RefSeq Size: 3672 bp

RefSeq ORF: 765 bp

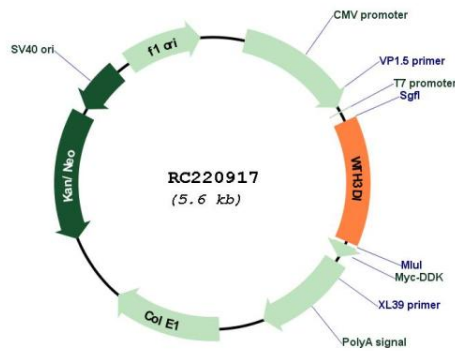
Locus ID: 150786

UniProt ID: [Q53S08](#)

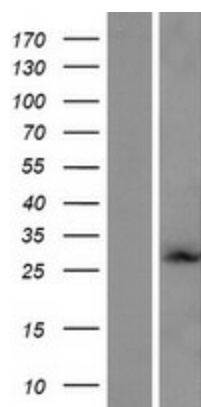
Cytogenetics: 2q21.1

MW: 28.1 kDa

Product images:



Circular map for RC220917



Western blot validation of overexpression lysate (Cat# [LY421467]) using anti-DDK antibody (Cat# [TA50011-100]). Left: Cell lysates from untransfected HEK293T cells; Right: Cell lysates from HEK293T cells transfected with RC220917 using transfection reagent MegaTran 2.0 (Cat# [TT210002]).