

## Product datasheet for **RC220916L3V**

### **KIR3DL2 (NM\_006737) Human Tagged ORF Clone Lentiviral Particle**

#### **Product data:**

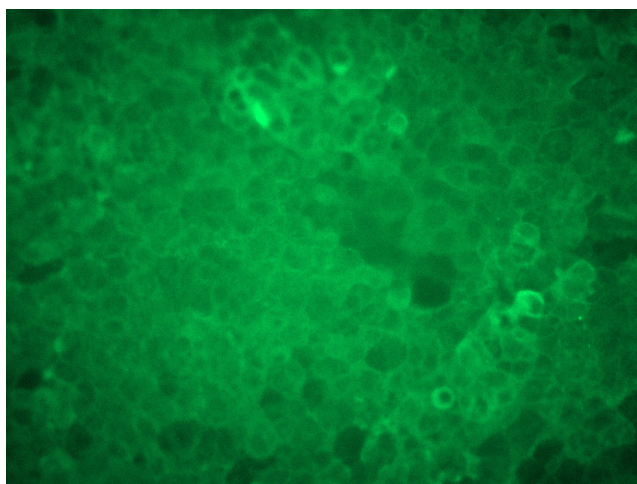
<b>Product Type:</b>	Lentiviral Particles
<b>Product Name:</b>	KIR3DL2 (NM_006737) Human Tagged ORF Clone Lentiviral Particle
<b>Symbol:</b>	KIR3DL2
<b>Synonyms:</b>	3DL2; CD158K; KIR-3DL2; NKAT-4; NKAT4; NKAT4B; p140
<b>Mammalian Cell Selection:</b>	Puromycin
<b>Vector:</b>	pLenti-C-Myc-DDK-P2A-Puro (PS100092)
<b>Tag:</b>	Myc-DDK
<b>ACCN:</b>	NM_006737
<b>ORF Size:</b>	1365 bp
<b>ORF Nucleotide Sequence:</b>	The ORF insert of this clone is exactly the same as(RC220916).
<b>OTI Disclaimer:</b>	The molecular sequence of this clone aligns with the gene accession number as a point of reference only. However, individual transcript sequences of the same gene can differ through naturally occurring variations (e.g. polymorphisms), each with its own valid existence. This clone is substantially in agreement with the reference, but a complete review of all prevailing variants is recommended prior to use. <a href="#">More info</a>
<b>OTI Annotation:</b>	This clone was engineered to express the complete ORF with an expression tag. Expression varies depending on the nature of the gene.
<b>RefSeq:</b>	<a href="#">NM_006737.1</a>
<b>RefSeq Size:</b>	1885 bp
<b>RefSeq ORF:</b>	1368 bp
<b>Locus ID:</b>	3812
<b>UniProt ID:</b>	<a href="#">P43630</a>
<b>Cytogenetics:</b>	19q13.42
<b>Protein Families:</b>	Transmembrane



[View online »](#)

<b>Protein Pathways:</b>	Antigen processing and presentation, Graft-versus-host disease, Natural killer cell mediated cytotoxicity
<b>MW:</b>	50.2 kDa
<b>Gene Summary:</b>	Killer cell immunoglobulin-like receptors (KIRs) are transmembrane glycoproteins expressed by natural killer cells and subsets of T cells. The KIR genes are polymorphic and highly homologous and they are found in a cluster on chromosome 19q13.4 within the 1 Mb leukocyte receptor complex (LRC). The gene content of the KIR gene cluster varies among haplotypes, although several "framework" genes are found in all haplotypes (KIR3DL3, KIR3DP1, KIR3DL4, KIR3DL2). The KIR proteins are classified by the number of extracellular immunoglobulin domains (2D or 3D) and by whether they have a long (L) or short (S) cytoplasmic domain. KIR proteins with the long cytoplasmic domain transduce inhibitory signals upon ligand binding via an immune tyrosine-based inhibitory motif (ITIM), while KIR proteins with the short cytoplasmic domain lack the ITIM motif and instead associate with the TYRO protein tyrosine kinase binding protein to transduce activating signals. The ligands for several KIR proteins are subsets of HLA class I molecules; thus, KIR proteins are thought to play an important role in regulation of the immune response. This gene is one of the "framework" loci that is present on all haplotypes. Alternatively spliced transcript variants encoding multiple isoforms have been observed for this gene. [provided by RefSeq, Jun 2011]

### Product images:



[RC220916L3] was used to prepare Lentiviral particles using [TR30037] packaging kit. HEK293T cells were transduced with RC220916L3V particle to overexpress human KIR3DL2-Myc-DDK fusion protein.