

## Product datasheet for **RC220915**

### **RNF98 (TRIM36) (NM\_018700) Human Tagged ORF Clone**

#### **Product data:**

Product Type:	Expression Plasmids
Product Name:	RNF98 (TRIM36) (NM_018700) Human Tagged ORF Clone
Tag:	Myc-DDK
Symbol:	RNF98
Synonyms:	ANPH; HAPRIN; RBCC728; RNF98
Mammalian Cell Selection:	Neomycin
Vector:	pCMV6-Entry (PS100001)
E. coli Selection:	Kanamycin (25 ug/mL)



[View online »](#)

ORF Nucleotide  
Sequence:

>RC220915 representing NM\_018700  
Red=Cloning site Blue=ORF Green=Tags(s)

TTTTGTAATACGACTCACTATAGGGCGGCCGGGAATTCGTGACTGGATCCGGTACCGAGGAGATCTGCC  
GCCGCGATCGCC

ATGTCGGAGTCTGGGAGATGAGTGAATTTGGCTACATCATGGAATTGATAGCTAAAGGCAAGTTACCA  
TTAAGAATATCGAAAGGGAGCTCATTGCCCAGCATGCAAGGAGCTGTTTACCCACCCATTGATTCTCCC  
TTGCCAACATAGTATCTGTCTATAAATGTGTAAAAGAACTCCTGCTGACTCTCGATGATTCAACGAT  
GTGGGATCAGACAACCTCAATCAAAGCAGTCTCGACTTCGGCTCCCCTCCCCTAGTATGGATAAAATTG  
ACCGAATTAACAGACCAGGCTGGAAGCGCAATTCATTGACCCCGAGGACAACCTGTTTTCCCTTGCCCTGG  
CTGTGAGCATGATGTGGATCTTGGAGAACGAGGAATCAATGGTCTGTTTCGAAACTTCACITTTGGAACT  
ATTGTGGAAGATATCGTCAAGCAGCTAGGGCAGCCACAGCCATTATGTGTGACCTTTGTAACCACCAC  
CTCAAGAATCCACAAAAGCTGCATGGACTGTAGTGAAGTTACTGCAATGAATGCTTCAAATTCATCA  
CCCTTGGGGTACTATAAAAGCTCAACATGAGTATGTTGGTCCAACCTAACTTCAGACCCAAGATTTTA  
ATGTGCCCAGAACATGAAACAGAGAGAATAAACATGTACTGTGAATTATGTAGGAGGCCAGTTTGCCATC  
TGTGTAAGTTGGGTGATATCATGCCAACCCAGTGAACCACTATGAGCAGTGCCTACAAAACCTTAA  
GGAAAAGCTTTCAAAGGATATTGATTACCTTATTGGTAAGGAAAGCCAGGTGAAGAGTCAAATATCTGAA  
CTAAACTTGTTAATGAAAGAAACAGAGTGAATGGAGAGAGGGCTAAAGAAGAAGCAATTACACATTTTG  
AAAAGCTCTTTGAAGTCTGGAAGAGAGGAAATCATCTGTTTTGAAAGCAATTGACTCCTCTAAGAACT  
AAGATTAGACAAATTTAGACTCAAATGGAAGAGTACCAGGGACTTCTAGAGAACAATGGACTTGTGGGA  
TATGCTCAAGAAGTCTAAAGGAGACAGATCAGTCTTGCCTTTGTCAGACAGCAAAGCAGCTCCACCTCA  
GAATACAGAAAGCCACAGAATCTTTGAAGAGCTTTAGACCTGCAGCTCAGACTTCTTTGAAGACTATGT  
TGTTAATACCTCTAAACAACAGAACTTCTGGAGAATTATCCTTTTTCTCTAGTGGCATAGACGTGCCA  
GAGATCAATGAGGAACAGAGCAGAGTATAAACAATGCCTTGATAAATTGGCACCATCCAGAAAAGGATA  
AAGCTGATAGCTATGTTCTTGAATATCGGAAAATCAATAGAGATGATGAAATGTCATGGAATGAGATAGA  
AGTGTGTGGAACAAGTAAATAATTCAAGACTTGGAAAACAGTAGTACCTATGCTTTCAGAGTAAGAGCT  
TACAAGGGTTCAATCTGTAGTCTTGCAGCAGAGAATTGATTCTTCATACTCCTCCAGCTCCAGTTTTCA  
GCTTCTCTTTGATGAAAAATGTGGCTATAAATGAACACCTCCTGCTGAACTGAAGAGAGACCGTGT  
AGAGAGTAGAGCTGGATTTAATCTTCTGCTTGCAGAACGCATCCAAGTGGGTATTACACAAGCTTA  
GACTACATCATTGGAGATACTGGCATTACAAAAGGAAAACACTTCTGGGCCTTCCGTGTGGAACCATATT  
CATACCTGGTAAAAGTGGGAGTTGCTTCTAGCGATAAACTACAAGAATGGCTCCGTTCTCCCCGGGATGC  
AGTTAGTCCAAGATATGAGCAAGACAGTGGCATGACAGTGAAGTGAGGATGCCTGTTTTGATTCTTCA  
CAACCATTTACCTTAGTTACTATAGGCATGCAGAAATTTTTATACCCAAGTCACTACTTCTTCTAATG  
AACCTGAAAATAGAGTTCTCCCTATGCCAACAAGTATTGGGATTTTCTTGTACTGTGATAAAGGCAAAGT  
AAATTTCTATGATATGGATCAGATGAAATGCCTTTATGAACGCCAAGTGGACTGTTACATACACTGTAT  
CCAGCATTTGCATTAATGGGCAGTGGAGGAATTCAGCTTGAAGAACCATCACAGCAAAATATCTGGAAT  
ACCAAGAGGACATG

ACGCGTACGCGGCCGCTCGAGCAGAACTCATCTCAGAAGAGGATCTGGCAGCAAATGATATCCTGGATT  
ACAAGGATGACGACGATAAGGTTTAA

**Protein Sequence:** >RC220915 representing NM\_018700  
 Red=Cloning site Green=Tags(s)

MSESGEMSEFGYIMELIAKGKVTIKNIERELICPACKELFTHPLILPCQHSICHKCVKELLLTLDDSFND  
 VGSDNSNQSSPRLRLPSPMDKIDRINRPGWKRNSLTPRTTVFPCPGCEHDVLDLGERGINGLFRNFTLET  
 IVERYRQAARAATAIMCDLCKPPPQESTKSCMDCSASYCNECFKIHHPWGTIKAQHEYVGPPTNFRPKIL  
 MCPHEHETERINMYCELRRPVCHLCKLGGNHANHRVTTMSSAYKTLKEKLSKDIDYLIGKESQVKSQISE  
 LNLLMKETECNGERAKEEAITHFEKLFVLEERKSSVLKVIDSSKKLRDLDFQTQMEEYQGLLENGLVG  
 YAQEVLKETDQSCFVQTAQLHLRIQKATESLKSFRPAAQTSFEDYVVNTSKQTELLGELSSFGIDVP  
 EINEEQSRVYNNALINWHHPEKDKADSYVLEYRKINRDEMSWNEIEVCGTSKIIQDLENSSTYAFRVRA  
 YKGSICSPCSRELILHTPPAPVFSFLFDEKCGYNNEHLLNLKRDRVESRAGNLLAAERIQVGYTSL  
 DYIIGDTGITKGFHFAFRVPEPYSYLKVGVSDDLQEWLRSRDAVSPRYEQDSGHDGSEDACFDSS  
 QPFTLVITGMQKFFIPKSPSSNEPENRVLPMPTSIGIFLDCDKGVNFYDMDQMKCLYERQVDCSHTLY  
 PAFALMGSGGIQLEEPITAKYLEYQEDM

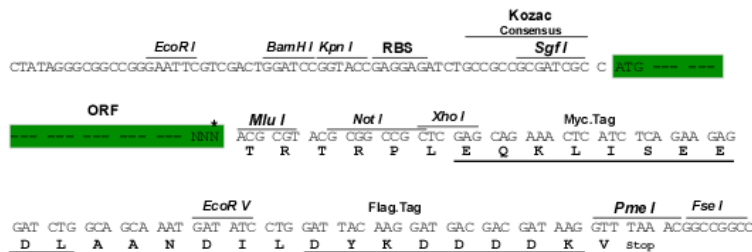
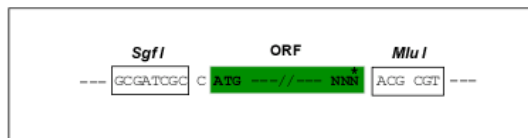
TRTRPLEQKLISEEDLAANDILDYKDDDDKV

**Chromatograms:** [https://cdn.origene.com/chromatograms/mg4220\\_b05.zip](https://cdn.origene.com/chromatograms/mg4220_b05.zip)

**Restriction Sites:** SgfI-MluI

**Cloning Scheme:**

Cloning sites used for ORF Shuttling:



\* The last codon before the Stop codon of the ORF

**ACCN:** NM\_018700

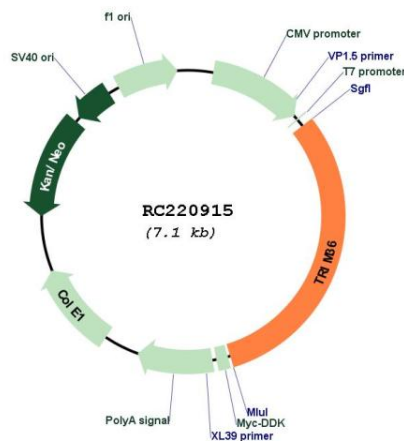
**ORF Size:** 2184 bp

**OTI Disclaimer:** The molecular sequence of this clone aligns with the gene accession number as a point of reference only. However, individual transcript sequences of the same gene can differ through naturally occurring variations (e.g. polymorphisms), each with its own valid existence. This clone is substantially in agreement with the reference, but a complete review of all prevailing variants is recommended prior to use. [More info](#)

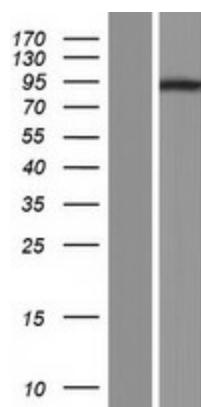
**OTI Annotation:** This clone was engineered to express the complete ORF with an expression tag. Expression varies depending on the nature of the gene.

<b>Components:</b>	The ORF clone is ion-exchange column purified and shipped in a 2D barcoded Matrix tube containing 10ug of transfection-ready, dried plasmid DNA (reconstitute with 100 ul of water).
<b>Reconstitution Method:</b>	<ol style="list-style-type: none"><li>1. Centrifuge at 5,000xg for 5min.</li><li>2. Carefully open the tube and add 100ul of sterile water to dissolve the DNA.</li><li>3. Close the tube and incubate for 10 minutes at room temperature.</li><li>4. Briefly vortex the tube and then do a quick spin (less than 5000xg) to concentrate the liquid at the bottom.</li><li>5. Store the suspended plasmid at -20°C. The DNA is stable for at least one year from date of shipping when stored at -20°C.</li></ol>
<b>RefSeq:</b>	<a href="#">NM_018700.4</a>
<b>RefSeq Size:</b>	4456 bp
<b>RefSeq ORF:</b>	2187 bp
<b>Locus ID:</b>	55521
<b>UniProt ID:</b>	<a href="#">Q9NQ86</a>
<b>Cytogenetics:</b>	5q22.3
<b>Domains:</b>	zf-B_box, SPRY, FN3
<b>Protein Families:</b>	Druggable Genome
<b>MW:</b>	82.8 kDa
<b>Gene Summary:</b>	The protein encoded by this gene is a member of the tripartite motif (TRIM) family. The TRIM motif includes three zinc-binding domains, a RING, a B-box type 1 and a B-box type 2, and a coiled-coil region. Multiple alternatively spliced transcript variants that encode different protein isoforms have been described for this gene. [provided by RefSeq, Jul 2008]

## Product images:



Circular map for RC220915



Western blot validation of overexpression lysate (Cat# [LY412895]) using anti-DDK antibody (Cat# [TA50011-100]). Left: Cell lysates from untransfected HEK293T cells; Right: Cell lysates from HEK293T cells transfected with RC220915 using transfection reagent MegaTran 2.0 (Cat# [TT210002]).