

## Product datasheet for **RC220904**

### PAEP (NM\_001018049) Human Tagged ORF Clone

#### Product data:

**Product Type:** Expression Plasmids  
**Product Name:** PAEP (NM\_001018049) Human Tagged ORF Clone  
**Tag:** Myc-DDK  
**Symbol:** PAEP  
**Synonyms:** GD; GdA; GdF; GdS; PAEG; PEP; PP14; ZIF-1  
**Mammalian Cell Selection:** Neomycin  
**Vector:** pCMV6-Entry (PS100001)  
**E. coli Selection:** Kanamycin (25 ug/mL)  
**ORF Nucleotide Sequence:** >RC220904 representing NM\_001018049  
Red=Cloning site Blue=ORF Green=Tags(s)

TTTTGTAATACGACTCACTATAGGGCGCCGGAATTCGTCGACTGGATCCGGTACCGAGGAGATCTGCCGCC**CGGATCGCC**

ATGCTGTGCCCTCCTGCTCACCCTGGCGTGGCCCTGGTCTGTGGTGTCCCGGCCATGGACATCCCCAGACCAAGCAGGACCTGGAGCTCCCAAAGTTGGCAGGGACCTGGCACTCCATGGCCATGGCGACCAACAACATCTCCCTCATGGCGACACTGAAGGCCCTCTGAGGGTCCACATCACCTCACTGTTGCCACCCCGAGGACAACTGGAGATCGTTCTGCACAGATGGGAGAACAACAGCTGTGTTGAGAAGAAGGTCCTTGAGAGAAGACTGAGAATCCAAAGAAGTTCAAGATCAACTATACGGTGGCGAACGAGGCCACGCTGCTCGATACTGACTACGACAATTTCTGTTTCTGCTACAGGACACCACCACCCCATCCAGAGCATGATGTGCCAGTACCTGGCCAGAGTCTGTTGGAGGACGATGAGATCATGCAGGGATTCATCAGGGCTTTCAGGCCCTGCCAGGCCATATGGTACTTGTGGACTTGAACAGATGGAAGAGCCGTGCCGTTTC

**ACGCGT**ACGCGGCCGCTCGAGCAGAACTCATCTCAGAAGAGGATCTGGCAGCAAATGATATCCTGGATTACAAGGATGACGACGATAAGGTTTAA

**Protein Sequence:** >RC220904 representing NM\_001018049  
Red=Cloning site Green=Tags(s)

MLCLLLTLGVALVCGVPAMDIPQTKQDLELPKLAGTWHSMAMATNNISLMATLKAPLRVHITSLLPEDNLEIVLHRWENNSCVEKKVLGEKTENPKFKINYTVANEATLLDTDYDNFLFLCLQDTTPIQSMCQYLARVLVEDDEIMQGFIRAFRPLRHLWYLLDLKQMEPCRF

**TRTRPLEQKLI**SEEDLAANDILDYKDDDDKV

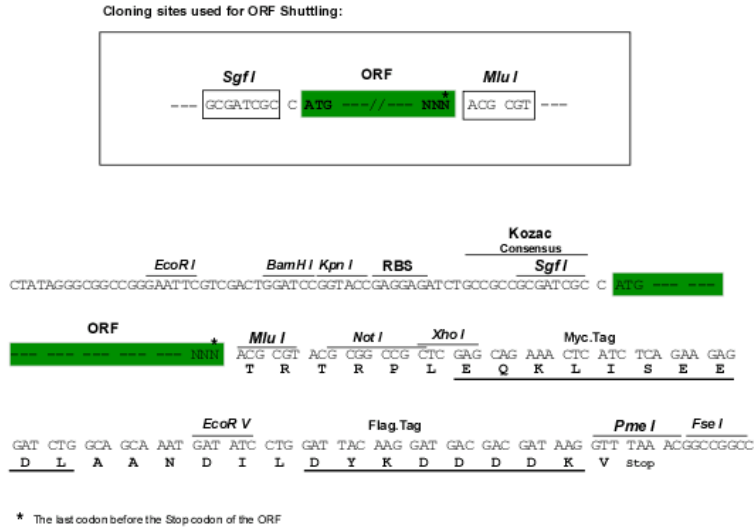
**Chromatograms:** [https://cdn.origene.com/chromatograms/mg2762\\_e05.zip](https://cdn.origene.com/chromatograms/mg2762_e05.zip)



[View online »](#)

Restriction Sites: SgfI-MluI

Cloning Scheme:



ACCN: NM\_001018049

ORF Size: 540 bp

OTI Disclaimer: The molecular sequence of this clone aligns with the gene accession number as a point of reference only. However, individual transcript sequences of the same gene can differ through naturally occurring variations (e.g. polymorphisms), each with its own valid existence. This clone is substantially in agreement with the reference, but a complete review of all prevailing variants is recommended prior to use. [More info](#)

OTI Annotation: This clone was engineered to express the complete ORF with an expression tag. Expression varies depending on the nature of the gene.

Components: The ORF clone is ion-exchange column purified and shipped in a 2D barcoded Matrix tube containing 10ug of transfection-ready, dried plasmid DNA (reconstitute with 100 ul of water).

Reconstitution Method:

1. Centrifuge at 5,000xg for 5min.
2. Carefully open the tube and add 100ul of sterile water to dissolve the DNA.
3. Close the tube and incubate for 10 minutes at room temperature.
4. Briefly vortex the tube and then do a quick spin (less than 5000xg) to concentrate the liquid at the bottom.
5. Store the suspended plasmid at -20°C. The DNA is stable for at least one year from date of shipping when stored at -20°C.

RefSeq: [NM\\_001018049.3](#)

RefSeq Size: 857 bp

RefSeq ORF: 543 bp

Locus ID: 5047

UniProt ID: [P09466](#)

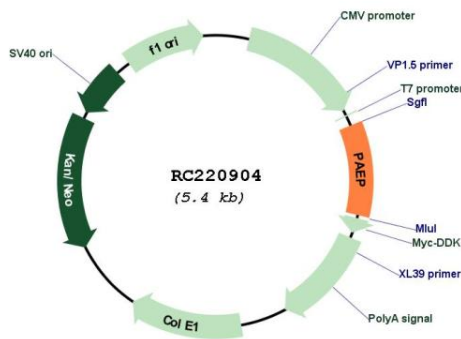
**Cytogenetics:** 9q34.3

**Protein Families:** Druggable Genome

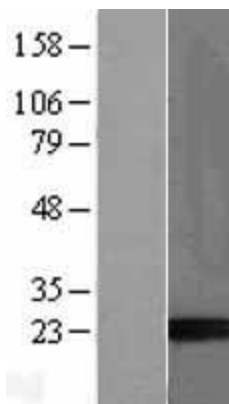
**MW:** 20.62 kDa

**Gene Summary:** This gene is a member of the kernel lipocalin superfamily whose members share relatively low sequence similarity but have highly conserved exon/intron structure and three-dimensional protein folding. Most lipocalins are clustered on the long arm of chromosome 9. The encoded glycoprotein has been previously referred to as pregnancy-associated endometrial alpha-2-globulin, placental protein 14, and glycodelin, but has been officially named progestagen-associated endometrial protein. Three distinct forms, with identical protein backbones but different glycosylation profiles, are found in amniotic fluid, follicular fluid and seminal plasma of the reproductive system. These glycoproteins have distinct and essential roles in regulating a uterine environment suitable for pregnancy and in the timing and occurrence of the appropriate sequence of events in the fertilization process. Alternative splicing results in multiple transcript variants. [provided by RefSeq, Oct 2015]

**Product images:**



Circular map for RC220904



Western blot validation of overexpression lysate (Cat# [LY422704]) using anti-DDK antibody (Cat# [TA50011-100]). Left: Cell lysates from untransfected HEK293T cells; Right: Cell lysates from HEK293T cells transfected with RC220904 using transfection reagent MegaTran 2.0 (Cat# [TT210002]).