

Product datasheet for **RC220903**

ApoER2 (LRP8) (NM_017522) Human Tagged ORF Clone

Product data:

Product Type:	Expression Plasmids
Product Name:	ApoER2 (LRP8) (NM_017522) Human Tagged ORF Clone
Tag:	Myc-DDK
Symbol:	ApoER2
Synonyms:	APOER2; HSZ75190; LRP-8; MCI1
Mammalian Cell Selection:	Neomycin
Vector:	pCMV6-Entry (PS100001)
E. coli Selection:	Kanamycin (25 ug/mL)



[View online »](#)

Protein Sequence: >RC220903 representing NM_017522
Red=Cloning site Green=Tags(s)

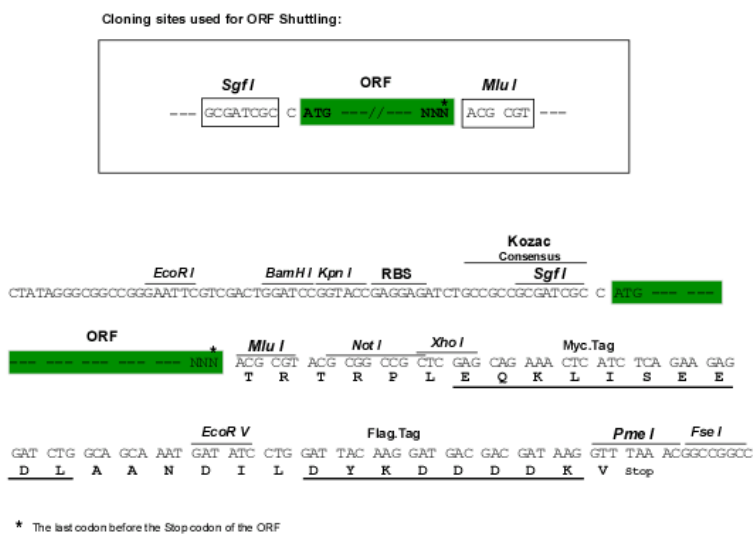
MGLPEPGPLRLLALLLLLLLLLLLQLQHLAAAAADPLLGGQGPAGKDEKQDFQCRNERCIPSVWRCDDED
DCLDHSDEDDCPKKTCA DSDFTCDNGHCIHERWKCDGEEPCDGSDESEATCTKQVCPAEKLS CGPTSHK
CVPASWRCDGEKDCGEGGADEAGCATSLGTGRGDEFQCGDGTCVLAIKHCNQEQDCPDGSDEAGCLQGLNE
CLHNNGGCSHICTDLKIGFECTCPAGFQLLDQKTCGDIDECKDPDACSQICVNYKGYFKCECYPGYEMDL
LTKNCKAAAGKSPSLIFTRNHEVRRIDLVKRNY SRLIPMLKNVVALDVEVATNRIYWCDLSYRKIYSAYM
DKASDPKEQEVLI DEQLHSPEGLAVDWVHKHIYWTDSGNKTISVATVDGRRRTLFSRNLS EPRAI AVDP
LRGFMYSWDWGDQAKIEKSLNGVDRQTLVSDNIEWPNGITL DLLSQRLYVWDSKLHQLSSIDFSGGNRK
TLISSTDFLSHPFGIAVFEDKVFWDLENEAIFSANRLNGLEISILAENLNPHDIVIFHELKQPRAPDA
CELSVQPNGGCEYLCLPAPQISSHSPKYTCACPD TMWLGPDMKRCYRDANEDSKMGSTV TAAVIGIIVPI
VVIALLCM SGLIWRNWK RKNTKSMNFDPVYRKTTEEDEDELHIGRTAQIGHVYPARVALSLEDDGLP

TRTRPLEQKLISEEDLAANDILDYKDDDDKV

Chromatograms: https://cdn.origene.com/chromatograms/ja2363_f05.zip

Restriction Sites: SgfI-MluI

Cloning Scheme:



ACCN: NM_017522

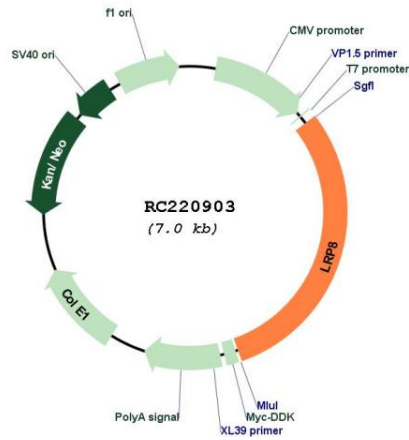
ORF Size: 2100 bp

OTI Disclaimer: The molecular sequence of this clone aligns with the gene accession number as a point of reference only. However, individual transcript sequences of the same gene can differ through naturally occurring variations (e.g. polymorphisms), each with its own valid existence. This clone is substantially in agreement with the reference, but a complete review of all prevailing variants is recommended prior to use. [More info](#)

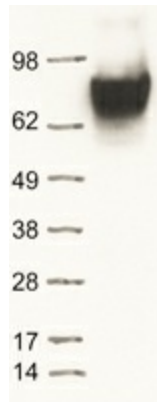
OTI Annotation: This clone was engineered to express the complete ORF with an expression tag. Expression varies depending on the nature of the gene.

Components:	The ORF clone is ion-exchange column purified and shipped in a 2D barcoded Matrix tube containing 10ug of transfection-ready, dried plasmid DNA (reconstitute with 100 ul of water).
Reconstitution Method:	<ol style="list-style-type: none">1. Centrifuge at 5,000xg for 5min.2. Carefully open the tube and add 100ul of sterile water to dissolve the DNA.3. Close the tube and incubate for 10 minutes at room temperature.4. Briefly vortex the tube and then do a quick spin (less than 5000xg) to concentrate the liquid at the bottom.5. Store the suspended plasmid at -20°C. The DNA is stable for at least one year from date of shipping when stored at -20°C.
RefSeq:	NM_017522.5
RefSeq Size:	6994 bp
RefSeq ORF:	2103 bp
Locus ID:	7804
UniProt ID:	Q14114
Cytogenetics:	1p32.3
Domains:	Idl_recept_b, EGF_CA, Idl_recept_a, EGF
Protein Families:	Druggable Genome, Secreted Protein, Transmembrane
MW:	78.3 kDa
Gene Summary:	This gene encodes a member of the low density lipoprotein receptor (LDLR) family. Low density lipoprotein receptors are cell surface proteins that play roles in both signal transduction and receptor-mediated endocytosis of specific ligands for lysosomal degradation. The encoded protein plays a critical role in the migration of neurons during development by mediating Reelin signaling, and also functions as a receptor for the cholesterol transport protein apolipoprotein E. Expression of this gene may be a marker for major depressive disorder. Alternatively spliced transcript variants encoding multiple isoforms have been observed for this gene. [provided by RefSeq, Jun 2011]

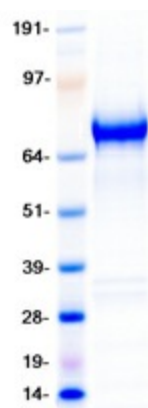
Product images:



Circular map for RC220903



Western blot validation of overexpression lysate (Cat# [LY413735]) using anti-DDK antibody (Cat# [TA50011-100]). Left: Cell lysates from un-transfected HEK293T cells; Right: Cell lysates from HEK293T cells transfected with RC220903 using transfection reagent MegaTran 2.0 (Cat# [TT210002]).



Coomassie blue staining of purified LRP8 protein (Cat# [TP320903]). The protein was produced from HEK293T cells transfected with LRP8 cDNA clone (Cat# RC220903) using MegaTran 2.0 (Cat# [TT210002]).