

Product datasheet for **RC220901**

NIBAN2 (NM_022833) Human Tagged ORF Clone

Product data:

Product Type:	Expression Plasmids
Product Name:	NIBAN2 (NM_022833) Human Tagged ORF Clone
Tag:	Myc-DDK
Symbol:	NIBAN2
Synonyms:	bA356B19.6; C9orf88; FAM129B; MEG-3; MINERVA; OC58
Mammalian Cell Selection:	Neomycin
Vector:	pCMV6-Entry (PS100001)
E. coli Selection:	Kanamycin (25 ug/mL)



[View online »](#)

ORF Nucleotide Sequence:

>RC220901 representing NM_022833
 Red=Cloning site Blue=ORF Green=Tags(s)

TTTTGTAATACGACTCACTATAGGGCGGCCGGAATTCGTCGACTGGATCCGGTACCGAGGAGATCTGCC
 GCC**CGGATCGCC**

ATGGGGGACGTGCTGTCCACGCACCTGGACGACGCCCGGCCAGCACATCGCAGAAAAACCGGAAGA
 TCCTGACGGAGTTCCTCCAGTTCATGAAGACCAGTATGGCGTGGCTCTCTTCAACAGCATGCGCCATGA
 GATTGAGGGCACGGGGCTGCCGACAGGCCAGCTGCTCTGGCGCAAGGTGCCACTGGACGAGCGCATCGTC
 TTCTCGGGAACTCTTCCAGCACCAGGAGGACAGCAAGAAGTGGAGAAACCGCTTCAGCCTCGTGCCCC
 ACAACTACGGGTGGTGTCTACGAAAAAAAGCGGCCTATGAGCGGCAGGTCCCACCACGAGCCGTCAT
 CAACAGTGCAGGTACAAAATCCTCACGTCCGTGGACCAATACCTGGAGCTCATTGGCAACTCCTTACCA
 GGGACCACGGCAAAGTCGGGCAGTGCCCCATCCTCAAGTCCCCACACAGTCCCGCTCATCCTCTGGC
 ATCCTTATGCGCGTCACTACTTCTGCATGATGACAGAAGCCGAGCAGGACAAGTGGCAGGCTGTGCT
 GCAGGACTGCATCCGGCCTGCAACAATGGAATCCCTGAGGACTCCAAGGTAGAGGGCCCTGCGTTACA
 GATGCCATCCGCATGTACCGACAGTCCAAGGAGCTGTACGGCACCTGGGAGATGCTGTGTGGAAACGAGG
 TGAGATCCTGAGCAACCTGGTGTGGAGGAGCTGGGCCCTGAGCTGAAGGCAGAGCTCGGCCCGCGGT
 GAAGGGGAAACCGCAGGAGCGGCAGCGGACGTGGATCCAGATCTCGGACGCCGTGTACCACATGGTGTAC
 GAGCAGGCCAAGGCGCGCTTCGAGGAGGTGCTGTCCAAGGTGCAGCAGGTGCAGCCGGCCATGCAGGCCG
 TCATCCGAACTGACATGGACAAATATCACCTCCAAGGAGCACCTTGCCAGCAAGATCCGAGCCTTCAT
 CCTCCCCAAGGCAGAGGTGTGCGTGCAGAACCATGTCCAGCCCTACATCCCATCCATCCTGGAGGCCCTG
 ATGGTCCCACAGCCAGGGCTTCACTGAGGTGCGAGATGTCTTCTTCAAGGAGGTACGGACATGAACC
 TGAGCTCATCAACGAGGGCGGCAATTGACAAGCTGGGCGAGTACATGGAGAAGCTGCCGCTGCGGTA
 CCACCCCTGAAGATGCAGAGCTGCTATGAGAAGATGGAGTCGCTGCGACTGGACGGGCTGCAGCAGCGA
 TTTGATGTGTCCAGCACGTCCTGTTCAAGCAGGAGCCAGATCCACATGCGGGAGCAAAATGGACAATG
 CCGTGTATACGTTTCGAGACCCTCCTGCACCAGGAGCTGGGGAAGGGGCCACCAAGGAGGAGCTGTGCAA
 GTCCATCCAGCGGGTCTGGAGCGGGTGTGAAGAAATACGACTACGACAGCAGCTCTGTGCGGAAGAGG
 TTCTTCCGGGAGGCGCTGCTGCAGATCAGCATCCCGTTCCTGCTCAAGAAGCTGGCCCTACCTGCAAGT
 CGGAGCTGCCCGGTTCCAGGAGCTGATCTTCGAGGACTTGGCCAGGTTTCATCCTGGTGGAAAACACGTA
 CGAGGAGGTGGTGTGCAGACCGTCATGAAGGACATCCTGCAGGCTGTGAAGGAGGCCGCGGTGCAGAGG
 AAGCACAACCTTACCGGACAGCATGGTTCATGCACAACAGCGACCCCACTGCACCTGCTGGCCGAGG
 GCGCCCCATCGACTGGGGCAGGAGTACAGCAACAGCGCGGGGGCGGACGCCAGCCCCAGCCCCAGCCCC
 GGAGTCAGCCACCTCTCGGAAAAGCGACGGCGGCCAAGCAGGTGGTCTCTGTGGTCCAGGATGAGGAG
 GTGGGGTGCCTTTGAGGCTAGCCCTGAGTACCACCACCTGCGTCCCCGGACGGTGTCACTGAGATCC
 GAGGCTGCTGGCCAAAGGTCTGCGGCCTGAGAGCCCCCACCAGCCGGCCCCCTGCTCAACGGGGCCCC
 CGCTGGGAGAGTCCCAGCCTAAGGCCGCCCCGAGGCTCCTCGCCGCTGCTCACCCCTCCAGCAT
 CTCCTGCCTGAAAGGCTGTGGACCTTGGGCCCCCAAGCCAGCCAGCAGGAGACTGGAGAGCAGGTGT
 CCAGCCCCAGCAGCCACCCGCCCTCCACACCACCACCGAGGACAGTGCAGGGGTGCAGACTGAGTTC

ACGCGTACGCGGCCGCTCGAGCAGAACTCATCTCAGAAGAGGATCTGGCAGCAAATGATATCCTGGATT
 ACAAGGATGACGACGATAAGGTTTAA

Protein Sequence: >RC220901 representing NM_022833
 Red=Cloning site Green=Tags(s)

```

MGDVLSTHLDDARRQHIAEKTGKILTEFLQFYEDQYGVAFNSMRHEIEGTGLPQAQLLWRKVPLDERIV
FSGNLFQHQEDSKKWRNRFSLVPHNYGLVLYENKAAYERQVPPRAVINSAGYKILTSVDQYLELIGNSLP
GTTAKSGSAPILKCPQTQFPLILWHPYARHYFFCMMTEAEQDKWQAVLQDCIRHCNNGIPEDSKVEGPAFT
DAIRMYRQSKEL YGTWEMLCGNEVQILSNL VMEELGPELKAELGPRLKGGKQERQRQWIQISDAVYHMVY
EQAKARFEEVL SKVQVQPAMQAVIRTDMDQIIITSKEHLASKIRAFILPKAEV CVRNHVQPYIPSILEAL
MVPTSQGFTEVRDVFFKEVTD MNLVINEGGIDKLGEYMEKLSRLAYHPLKMQSCYEKME SLRLDGLQQR
FDVSSTSVFKQRAQIHMREQMDNAVYTFETLLHQELGKGPTKEELCKSIQVLERVLKKYDYDSSSVRKR
FFREALQISIPFLLKKLAPTCKSELPRFQELIFEDFARFILVENTYEEVVLQTVMKDILQAVKEAAVQR
KHNLRYRDSMMHNSDPNLHLLAEGAPIDWGEYSNSGGGGSPSPSTPESATLSEKRRRAKQVSVVQDEE
VGLPFEASPEPSPASPDPVTEIRGLLAQGLRPESPPPAGPLLNAPAGESPQPKAAPEASSPPASPLQH
LLPGKAVDLGPPKPSDQETGEQVSSPSHPALHTTTEDSAGVQTEF
  
```

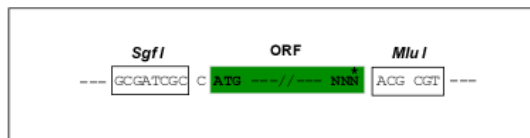
TRTRPLEQKLI SEEDLAANDILDYKDDDDKV

Chromatograms: https://cdn.origene.com/chromatograms/mk8041_g04.zip

Restriction Sites: SgfI-MluI

Cloning Scheme:

Cloning sites used for ORF Shuttling:



* The last codon before the Stop codon of the ORF

ACCN: NM_022833

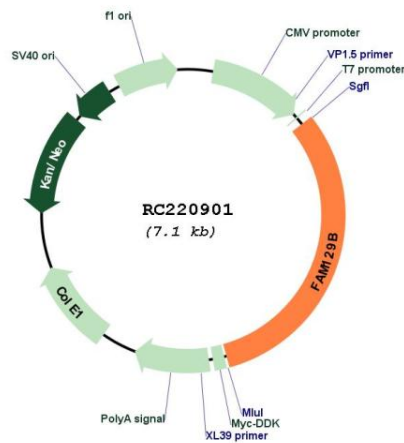
ORF Size: 2238 bp

OTI Disclaimer: The molecular sequence of this clone aligns with the gene accession number as a point of reference only. However, individual transcript sequences of the same gene can differ through naturally occurring variations (e.g. polymorphisms), each with its own valid existence. This clone is substantially in agreement with the reference, but a complete review of all prevailing variants is recommended prior to use. [More info](#)

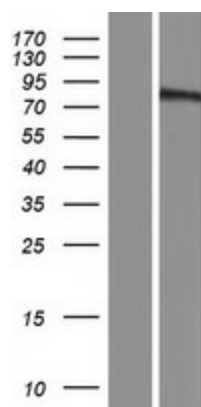
OTI Annotation: This clone was engineered to express the complete ORF with an expression tag. Expression varies depending on the nature of the gene.

- Components:** The ORF clone is ion-exchange column purified and shipped in a 2D barcoded Matrix tube containing 10ug of transfection-ready, dried plasmid DNA (reconstitute with 100 ul of water).
- Reconstitution Method:**
1. Centrifuge at 5,000xg for 5min.
 2. Carefully open the tube and add 100ul of sterile water to dissolve the DNA.
 3. Close the tube and incubate for 10 minutes at room temperature.
 4. Briefly vortex the tube and then do a quick spin (less than 5000xg) to concentrate the liquid at the bottom.
 5. Store the suspended plasmid at -20°C. The DNA is stable for at least one year from date of shipping when stored at -20°C.
- RefSeq:** [NM_022833.4](#)
- RefSeq Size:** 4007 bp
- RefSeq ORF:** 2241 bp
- Locus ID:** 64855
- UniProt ID:** [Q96TA1](#)
- Cytogenetics:** 9q34.11
- MW:** 84 kDa
- Gene Summary:** May play a role in apoptosis suppression. May promote melanoma cell invasion in vitro. [UniProtKB/Swiss-Prot Function]

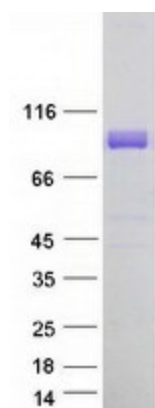
Product images:



Circular map for RC220901



Western blot validation of overexpression lysate (Cat# [LY411529]) using anti-DDK antibody (Cat# [TA50011-100]). Left: Cell lysates from untransfected HEK293T cells; Right: Cell lysates from HEK293T cells transfected with RC220901 using transfection reagent MegaTran 2.0 (Cat# [TT210002]).



Coomassie blue staining of purified NIBAN2 protein (Cat# [TP320901]). The protein was produced from HEK293T cells transfected with NIBAN2 cDNA clone (Cat# RC220901) using MegaTran 2.0 (Cat# [TT210002]).