

Product datasheet for **RC220897**

RAB27A (NM_004580) Human Tagged ORF Clone

Product data:

Product Type:	Expression Plasmids
Product Name:	RAB27A (NM_004580) Human Tagged ORF Clone
Tag:	Myc-DDK
Symbol:	RAB27A
Synonyms:	GS2; HsT18676; RAB27; RAM
Mammalian Cell Selection:	Neomycin
Vector:	pCMV6-Entry (PS100001)
E. coli Selection:	Kanamycin (25 ug/mL)
ORF Nucleotide Sequence:	>RC220897 ORF sequence Red=Cloning site Blue=ORF Green=Tags(s)

TTTTGTAATACGACTCACTATAGGGCGGCCGGAATTCGTCGACTGGATCCGGTACCGAGGAGATCTGCC
 GCC**CGATCGC**C

ATGTCTGATGGAGATTATGATTACCTCATCAAGTTTTAGCTTTGGGAGACTCTGGTGTAGGAAGACCA
 GTGTACTTTACCAATATACAGATGGTAAATTTAACTCAAATTTATCACAAAGTGGCATTGATTTTCAG
 GGAAAAAGAGTGGTGTACAGAGCCAGTGGCCGGATGGAGCCACTGGCAGAGGCCAGAGAATCCACCTG
 CAGTTATGGGACACAGCAGGGCAGGAGAGGTTTCGTAGCTTAACGACAGCGTTCTTCAGAGATGCTATGG
 GTTTTCTTCTACTTTTTGATCTGACAAATGAGCAAAGTTTCCTCAATGTCAGAACTGGATAAGCCAGCT
 ACAGATGCATGCATATTGTGAAAACCCAGATATAGTGCTGTGTGAAACAAGAGTGATCTGGAGGACCAG
 AGAGTAGTGAAAGAGGAGGAAGCCATAGCACTCGCAGAGAAATATGGAATCCCCTACTTTGAAACTAGTG
 CTGCCAATGGGACAAACATAAGCCAAGCAATTGAGATGCTTCTGGACCTGATAATGAAGCGAATGGAACG
 GTGTGTGGACAAGTCCTGGATTCTGAAGGAGTGGTGCGATCAAATGGTCATGCCTCTACGGATCAGTTA
 AGTGAAGAAAAGGAGAAAGGGCATGTGGCTGT

ACGCGTACGCGGCCGCTCGAGCAGAACTCATCTCAGAAGAGGATCTGGCAGCAAATGATATCCTGGATT
 ACAAGGATGACGACGATAAGGTTTAA


[View online »](#)

Protein Sequence: >RC220897 protein sequence
 Red=Cloning site Green=Tags(s)

MSDGDYDYLKFLALGDSGVGKTSVLYQYTDGKFNSKFITTVGIDFREKRVVYRASGPDGATGRGQRIHL
 QLWDTAGQERFSLTTAFRDAMGFLLLFDLTNEQSFLNVRNWISQLQMAYCENPDIVLCGNKSDLEDQ
 RVVKEEEAIALAEKYGIPYFETSAANGTNISQAIEMLLDLIMKRMERCVDKSWIPEGVVRNNGHASTDQL
 SEEKEKGACGC

TRTRPLEQKLISEEDLAANDILDYKDDDDKV

Chromatograms: https://cdn.origene.com/chromatograms/mk6470_c02.zip

Restriction Sites: SgfI-MluI

Cloning Scheme:



ACCN: NM_004580

ORF Size: 663 bp

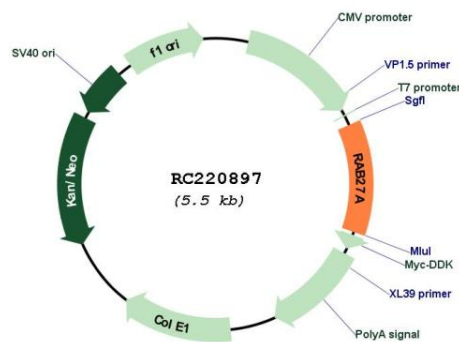
OTI Disclaimer: Due to the inherent nature of this plasmid, standard methods to replicate additional amounts of DNA in E. coli are highly likely to result in mutations and/or rearrangements. Therefore, OriGene does not guarantee the capability to replicate this plasmid DNA. Additional amounts of DNA can be purchased from OriGene with batch-specific, full-sequence verification at a reduced cost. Please contact our customer care team at custsupport@origene.com or by calling 301.340.3188 option 3 for pricing and delivery.

The molecular sequence of this clone aligns with the gene accession number as a point of reference only. However, individual transcript sequences of the same gene can differ through naturally occurring variations (e.g. polymorphisms), each with its own valid existence. This clone is substantially in agreement with the reference, but a complete review of all prevailing variants is recommended prior to use. [More info](#)

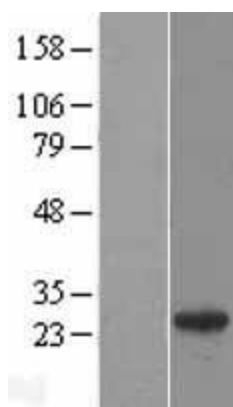
OTI Annotation: This clone was engineered to express the complete ORF with an expression tag. Expression varies depending on the nature of the gene.

Components:	The ORF clone is ion-exchange column purified and shipped in a 2D barcoded Matrix tube containing 10ug of transfection-ready, dried plasmid DNA (reconstitute with 100 ul of water).
Reconstitution Method:	<ol style="list-style-type: none"> 1. Centrifuge at 5,000xg for 5min. 2. Carefully open the tube and add 100ul of sterile water to dissolve the DNA. 3. Close the tube and incubate for 10 minutes at room temperature. 4. Briefly vortex the tube and then do a quick spin (less than 5000xg) to concentrate the liquid at the bottom. 5. Store the suspended plasmid at -20°C. The DNA is stable for at least one year from date of shipping when stored at -20°C.
RefSeq:	<u>NM_004580.5</u>
RefSeq Size:	3474 bp
RefSeq ORF:	666 bp
Locus ID:	5873
UniProt ID:	<u>P51159</u>
Cytogenetics:	15q21.3
Domains:	ras, RAN, RAS, RHO, RAB
Protein Families:	Druggable Genome
MW:	24.9 kDa
Gene Summary:	The protein encoded by this gene belongs to the small GTPase superfamily, Rab family. The protein is membrane-bound and may be involved in protein transport and small GTPase mediated signal transduction. Mutations in this gene are associated with Griscelli syndrome type 2. Alternative splicing occurs at this locus and four transcript variants encoding the same protein have been identified. [provided by RefSeq, Jul 2008]

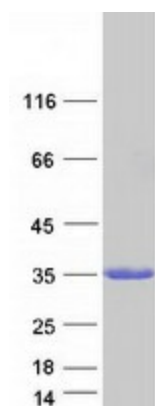
Product images:



Circular map for RC220897



Western blot validation of overexpression lysate (Cat# [LY405231]) using anti-DDK antibody (Cat# [TA50011-100]). Left: Cell lysates from untransfected HEK293T cells; Right: Cell lysates from HEK293T cells transfected with [RC223511] using transfection reagent MegaTran 2.0 (Cat# [TT210002]).



Coomassie blue staining of purified RAB27A protein (Cat# [TP320897]). The protein was produced from HEK293T cells transfected with RAB27A cDNA clone (Cat# RC220897) using MegaTran 2.0 (Cat# [TT210002]).