

## Product datasheet for RC220896

### SLX4IP (NM\_001009608) Human Tagged ORF Clone

#### Product data:

Product Type:	Expression Plasmids
Product Name:	SLX4IP (NM_001009608) Human Tagged ORF Clone
Tag:	Myc-DDK
Symbol:	SLX4IP
Synonyms:	bA204H22.1; bA254M13.1; C20orf94; dj1099D15.3
Mammalian Cell Selection:	Neomycin
Vector:	pCMV6-Entry (PS100001)
E. coli Selection:	Kanamycin (25 ug/mL)
ORF Nucleotide Sequence:	>RC220896 representing NM_001009608 Red=Cloning site Blue=ORF Green=Tags(s)

TTTTGTAATACGACTCACTATAGGGCGCCGGGAATTCGTCGACTGGATCCGGTACCGAGGAGATCTGCC  
GCC**CGATCGCC**

ATGGCATCTAAGAAATTTGCTGTAAATGTGGGAATTTTGTCTCCTCGTGGATCTTCATATCTTGCCAC  
AAGTTCAAACAAGATACAAGCTGGTTTTCTGAACAGAAGAAAGAGGAAGTCTGTTTACTGTAAAAGA  
AACATTGATTCAAGAGTTCAGGAGTACTTGAAGTTCGAAACAGCACAGGCCATCAAATGCAGAATTC  
ACAAGATCCAATCCCTTGTCTTAAAAGTTATGGCTTTCAAATCACAGCCTATTTCTCAAGAGAGGGA  
TACGCCTTCGCTGCATCAGGAGCACAGAATGCTGAAGTCTGTGATTCCCTGACAGATTTGTGGTTTG  
TGTCAAGTCAAGTTCAGTTCAGTCTGATCTTTAGCAAGTCAAGATGAAGATTTGACAGAAAGAGTTCTC  
CATGGAGTGTCTGATTACTTTGCTGAGTGTGCAGAGAGTTCACCTCCTCCAGTGCAAAGCTCCGGAGAA  
ATGCTCTGAAAGAAATTTGAAAAGAACTGAAACAAAAGCAGTGTACAGAGCAAATCGCAGACCAGAAG  
AGACACTGTGGAAACATCTAGTGACTCAGTGTTCAGAGATAGCAAGGAGGAGGAATGATGGTCAGGCT  
TCCTCCAGTCCCCATCAGAATCCATGGGACAAGCAAAGGATTCATAAAGGCAGCTGAGAGCCACTGGG  
GGCTTCTGTTCAAAAGCTGGAAAAGTTAATCAGACCCAGCCAGAAGACACTAGTGGCCAGCAAAAACC  
TCATCTGGGGAGCGGTTAAAGACAGGGCTTCTAAGCAGGAGCCCGTCTGTAGCTGTGAGTCAGCATCA  
CCATGTCCAAAACAAGTCCACGAGTGGCCAAAACCCAAACGAAACGAGGAATGCAGCTGCGGGAAG  
ACTTCGACCACCACGGGAGAGTTTCTCTTGAAGTGCATGATTAGTCCCGAGAGAAATAATAGTGAAAA  
AAGCAAAGCTGTCAAGGTTTTGCCAGTTCAGAGTTGTGATCCAGGTTACTTTTGAACAAGATTTG  
GCAAAAACCAGTCTAAGGAAGAGTTGCATGTTTTGAAAAGTCTCTCCTCCAGACATCTTATGAAAAATA  
ACCCAGGGCAGGCACAGCAAACCGGCTTAGCCACAACACTGAAAGATTATCTACAATTCAGAACAGCCC  
AACCAAGAAAAGAAATAACGAAAGAGGCCAT

**ACGCGT**ACGCGGCCGCTCGAGCAGAAACTCATCTCAGAAGAGGATCTGGCAGCAAATGATATCCTGGATT  
ACAAGGATGACGACGATAAGGTTTAA



[View online >](#)

**Protein Sequence:** >RC220896 representing NM\_001009608  
Red=Cloning site Green=Tags(s)

MASKKFAVKCGNFAVLVDLHILPQGSNKDTSWFSEQKKEEVCLLLKETIDSRVQEYLEVRKQHRPSNAEF  
 TRSNPLSLKGYGFQITAYFLKRGIRLCIRSTQNAELCVFPDRFVVCVSQLAFSRDLLASQNEDLTERVL  
 HGVSDYFAECAESSLPPSAKLRNALKEIVKRTETKSSVTSKSTQTRRDTVETSSDSVIAEIARRRNDGQA  
 SSSPPSESMGQAKDSIKAAEASHWGLPVQKLEKVNQTQPEDTSGQQKPHGERLKTGLLSRSPVCSCEAS  
 PCPKQSPRVAKTQQKRRNCSSAEDFDHHGRVSLGSDRLVPREIIVEKSKAVRVLPASELSDPGLLLKQDL  
 AKTTSKEELHVLESLSSRHLMKNNPGQAQQTGLATNTERLSTIQNSPTKKRKKYERGH

TRTRPLEQKLISEEDLAANDILDYKDDDDKV

**Chromatograms:** [https://cdn.origene.com/chromatograms/mk8041\\_g07.zip](https://cdn.origene.com/chromatograms/mk8041_g07.zip)

**Restriction Sites:** SgfI-MluI

**Cloning Scheme:**



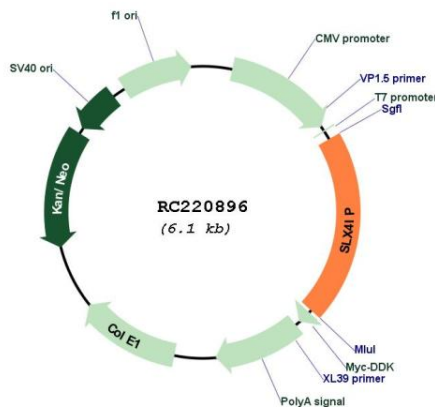
**ACCN:** NM\_001009608

**ORF Size:** 1224 bp

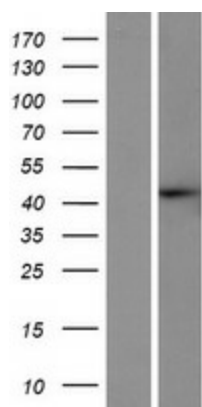
**OTI Disclaimer:** Due to the inherent nature of this plasmid, standard methods to replicate additional amounts of DNA in E. coli are highly likely to result in mutations and/or rearrangements. Therefore, OriGene does not guarantee the capability to replicate this plasmid DNA. Additional amounts of DNA can be purchased from OriGene with batch-specific, full-sequence verification at a reduced cost. Please contact our customer care team at [custsupport@origene.com](mailto:custsupport@origene.com) or by calling 301.340.3188 option 3 for pricing and delivery.

The molecular sequence of this clone aligns with the gene accession number as a point of reference only. However, individual transcript sequences of the same gene can differ through naturally occurring variations (e.g. polymorphisms), each with its own valid existence. This clone is substantially in agreement with the reference, but a complete review of all prevailing variants is recommended prior to use. [More info](#)

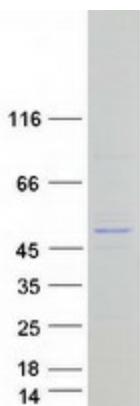
<b>OTI Annotation:</b>	This clone was engineered to express the complete ORF with an expression tag. Expression varies depending on the nature of the gene.
<b>Components:</b>	The ORF clone is ion-exchange column purified and shipped in a 2D barcoded Matrix tube containing 10ug of transfection-ready, dried plasmid DNA (reconstitute with 100 ul of water).
<b>Reconstitution Method:</b>	<ol style="list-style-type: none"> <li>1. Centrifuge at 5,000xg for 5min.</li> <li>2. Carefully open the tube and add 100ul of sterile water to dissolve the DNA.</li> <li>3. Close the tube and incubate for 10 minutes at room temperature.</li> <li>4. Briefly vortex the tube and then do a quick spin (less than 5000xg) to concentrate the liquid at the bottom.</li> <li>5. Store the suspended plasmid at -20°C. The DNA is stable for at least one year from date of shipping when stored at -20°C.</li> </ol>
<b>RefSeq:</b>	<u><a href="#">NM_001009608.3</a></u>
<b>RefSeq Size:</b>	1407 bp
<b>RefSeq ORF:</b>	1227 bp
<b>Locus ID:</b>	128710
<b>UniProt ID:</b>	<u><a href="#">Q5VYV7</a></u>
<b>Cytogenetics:</b>	20p12.2
<b>MW:</b>	45.4 kDa

**Product images:**


Circular map for RC220896



Western blot validation of overexpression lysate (Cat# [LY422923]) using anti-DDK antibody (Cat# [TA50011-100]). Left: Cell lysates from untransfected HEK293T cells; Right: Cell lysates from HEK293T cells transfected with RC220896 using transfection reagent MegaTran 2.0 (Cat# [TT210002]).



Coomassie blue staining of purified SLX4IP protein (Cat# [TP320896]). The protein was produced from HEK293T cells transfected with SLX4IP cDNA clone (Cat# RC220896) using MegaTran 2.0 (Cat# [TT210002]).