

Product datasheet for **RC220886**

EXOC3L1 (NM_178516) Human Tagged ORF Clone

Product data:

Product Type:	Expression Plasmids
Product Name:	EXOC3L1 (NM_178516) Human Tagged ORF Clone
Tag:	Myc-DDK
Symbol:	EXOC3L1
Synonyms:	EXOC3L
Mammalian Cell Selection:	Neomycin
Vector:	pCMV6-Entry (PS100001)
E. coli Selection:	Kanamycin (25 ug/mL)



[View online »](#)

ORF Nucleotide Sequence:

>RC220886 representing NM_178516
 Red=Cloning site Blue=ORF Green=Tags(s)

TTTTGTAATACGACTCACTATAGGGCGGCCGGAATTCGTCGACTGGATCCGGTACCGAGGAGATCTGCC
 GCC**CGGATCGCC**

ATGGACTCAGCAGCCAAGGATGAGATGCAGCCGGCTTGTCCCCTGGACCTGAGTGGCCAGAGCAGGAGC
 GGGCAGAGCAGCTGGCCCGGGTGCAGCGCTCAAGTGGGCCTCAGGCATCTTCTACCGCCGGAGCAGCT
 GGCCAGGCTAGGCCAGTACCGCAGCCGCGAGGTGCAGCGTACCTGCTCCCTGGAATCGCGCCTCAAGTCA
 GTGATGCAGTCATACCTGGAAGGCGTGCAGACTGGTGTGTGGCAGCTGGCCAGGCCATTGAGGTGGTGC
 AGGGAACCCGGGAGGCCCTGAGCCAGGCCCGTGGGTTGCTCCAGGGCATGTCCAGGCCCTACAGACTCT
 AGAGCCCCACGGGAGCGGGTTGCCAGCACAAGCAACTGCAGGCCCTGTCTCACCTGCTGCCTCGGCTG
 CGGGCAGTGCCGGCTGCAGTGTCCACACACAGACTCTGATTGATGGCCAACAGTTCTTGGAGGCATATG
 TGAGCCTTCGGGAGCTGGAGCAGCTGCGAGAGGATACGTGGCACCCCTGGGGGGCTGGAGTTGCCAGT
 CTTCCAGGGGCTGGACCTTCTGTTCGAGGCACTGGCCAGGCTGTGGAAGCAGCTGCAGGGGCCGAGGG
 AAGCTGGCACGGGAGGCCAGCCCTGTTGGTGGCTGCTGTGCGTGTGGCGGAGGTGGAGACTGGACGAA
 CAACCCCTGGGCCAGGTCCCCGGGACTGGCGTCAGCGCTGTCTGAGGGCACTACAGGAGGGCCTGGA
 GCAGGCCCACTTTGGGTACCTCTGCTGCCTGCACCAGGGGCCCTACCAGGGTGGCTGGAGGCTCTGCGA
 GTGGCCCTGCCAGTCGAGTTGGCCACAGCTGAGGCACTAGTAGCGCCTTGTGCCCGCCACAGTACAACG
 TGGTCCAGCTATGGGCCACACGCTGCATAGTGGTTTGCGCCGACGCTGCAGAACCTCCTTGCAGGGCC
 TGAGCTAGAAGCTGCGGATGCCTTCGCCTTGTGCACTGGGCACTGCATGTGTACCTGGGGCAGGAAATG
 ATGGGGAGCCTGGAGTTGGGGCTGAGGCTGATGTGCCAGCTGGAGCCCTTCTGACCTGGAGAACA
 TTGATGGGAGGTAGCTGAGTGGGGCCGGGAGCATGGGCCCAACACAGACCCGCTGGCTCCTATTACTCA
 CCAATGCCAGCCATTGTGCTGCAGATCCTGGAAGAGAACATTCGTGTGGCCAGCCTGGTCACTGAGTCAC
 TGCAACAGCGAGTGCATGGCATGGCACTGTGAGAACTGGGCACATTCTTGAGGAGCTTCACTGATGCTCT
 GATCCGATTCTCCGAGACCACTTACAGGGGAAATCAATGGCCCTCATTACGTGCCCTACCTACTGGCC
 GCCCTCAACCACAAGTCAGCACTCGGCTCCTCAGTGTCTGTCTGCTGCAGCTGGACGGGGCCCTTACAGGG
 CCTTGGCTCCAGTGAAGCTGCGCTGGACGAGTGCAGAGGAGGATCTACCGCTTGGTGTGGAGGCGCT
 GCAGGCGGAGCTCCAGCCCTGTTGCGGATCTGCCCTCGCGCAATGGCTGTCGAGCCCTGAGCTCCTG
 CAAAGTGTGTGAACGGACGGGGCGCTTCTGCCGGACTTCTGGCGGTGCGGAACCCACGGTTCAGC
 TGCTGCTGGCTGAGGCCGAGCGTCCCGTGGTGTCCAGTACCTGAGCGCGCTGATGCAAGGCCCGCTGGT
 GTGCCCGGAGCCGACGAGAGGACCCAGGCGGCCGAGCGCTGCGGCACGATGCTGCCAGCTTACAGCAG
 CTTTTCTCAGTTTGGGCTGGAGGAGAACGCGCACTGCGCGCCGGTGTGCTCGCCCTGAGGGAGCTGC
 TAAACCTCCGCGACCCCGCGCTGCTGGGCTGGAGGTGGCTGGCTGCGGCAACAATTTCCCGACGTGAG
 CGAGGACCACGTCTCCGCCCTTGGGCTGCGCGGGGACTTGTCCCGGAGCAGCACCTGGCCGCGCTC
 AGCTCCTGCAGGCTGCGCTGCCCGCTGCCCCGCGGAGCCCGCGCTCCTTTCAGCCTAGTGCCCG
 CGCCCGCGCTCGCGCCGGCTCCTGCCTGCCCTCGGGTCTGCGCCGAGCCCTGCTGCTCGCAGAA

ACGCGTACGCGGCCGCTCGAGCAGAACTCATCTCAGAAGAGGATCTGGCAGCAAATGATATCCTGGATT
 ACAAGGATGACGACGATAAGGTTTAA

Protein Sequence: >RC220886 representing NM_178516
Red=Cloning site Green=Tags(s)

MDSAAKDEMQPALSPGPEWPEQERAEQLARGAALKWASGIFYRPEQLARLGQYRSREVQRTCSLESRLKS
 VMQSYLEGVQTVVQLAQAIIEVVQGTREALSQARGLLQGMSQALQTLPLRERVAHQKQLQALSHLLPRL
 RAVPAAVSHTQTLIDGQQFLEAYVSLRELEQLREDTWAPLGGLELPVFQGLDLLFEALGQAVEAAGAAG
 KLAREDPALLVAAVRVAEVETGRTTPLGQVPRDWRQRCLRALQEGLEQAHFQSPLLPAPGALPGWLEALR
 VALPVELATAEALVAPCCPPQYVNVQLWAHTLHSGLRRLQNLLAGPELEAADAFAALLHWALHVYLGQEM
 MGSLELGPADVSQLLEPLLLENIEQLEATFVANIQASVSQWLQNALDGEVAEWGREHGPNTDPSGSYYS
 PMPAIVLQILEENIRVASLVSESLQQRVHGMALSELGTFLRFS DALIRFSRDHFRGKSMAPHYVYLLA
 ALNHKSALGSSSVLQLDGAPSGALAPVEAALDELQRRIRYLVLEALQAEQPLFADLPSRQWLSPELL
 QSVCERTGRFCRDFWRVRNPTVQLLLAEAERAVVLQYLSALMQGRLVCRGADERTQAAERLRHDAALQQL
 LFLSLGLEENAHCAPVLLALRELLNLRDPALLGLEVAGLRQQFPDVS EDHVSALLGLRGDL SREQHLAAL
 SSLQAALPPSPRASRRVLFSLVPAPALAPASCLPSGSCARALLLAE

TRTRPLEQKLISEEDLAANDILDYKDDDDKV

Chromatograms: https://cdn.origene.com/chromatograms/mk8041_g11.zip

Restriction Sites: SgfI-MluI

Cloning Scheme:

Cloning sites used for ORF Shuttling:



* The last codon before the Stop codon of the ORF

ACCN: NM_178516

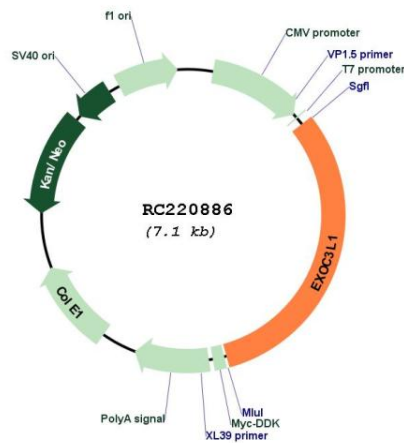
ORF Size: 2238 bp

OTI Disclaimer: The molecular sequence of this clone aligns with the gene accession number as a point of reference only. However, individual transcript sequences of the same gene can differ through naturally occurring variations (e.g. polymorphisms), each with its own valid existence. This clone is substantially in agreement with the reference, but a complete review of all prevailing variants is recommended prior to use. [More info](#)

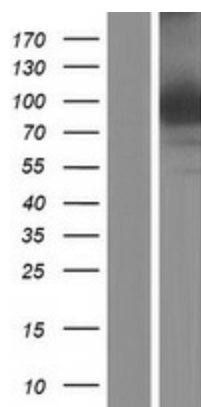
OTI Annotation: This clone was engineered to express the complete ORF with an expression tag. Expression varies depending on the nature of the gene.

Components:	The ORF clone is ion-exchange column purified and shipped in a 2D barcoded Matrix tube containing 10ug of transfection-ready, dried plasmid DNA (reconstitute with 100 ul of water).
Reconstitution Method:	<ol style="list-style-type: none"> 1. Centrifuge at 5,000xg for 5min. 2. Carefully open the tube and add 100ul of sterile water to dissolve the DNA. 3. Close the tube and incubate for 10 minutes at room temperature. 4. Briefly vortex the tube and then do a quick spin (less than 5000xg) to concentrate the liquid at the bottom. 5. Store the suspended plasmid at -20°C. The DNA is stable for at least one year from date of shipping when stored at -20°C.
RefSeq:	<u>NM_178516.2, NP_848611.1</u>
RefSeq Size:	6026 bp
RefSeq ORF:	2241 bp
Locus ID:	283849
UniProt ID:	<u>Q86V11</u>
Cytogenetics:	16q22.1
MW:	81.5 kDa
Gene Summary:	As part of the exocyst, may play a role in regulated exocytosis of insulin granules. [UniProtKB/Swiss-Prot Function]

Product images:



Circular map for RC220886



Western blot validation of overexpression lysate (Cat# [LY405899]) using anti-DDK antibody (Cat# [TA50011-100]). Left: Cell lysates from untransfected HEK293T cells; Right: Cell lysates from HEK293T cells transfected with RC220886 using transfection reagent MegaTran 2.0 (Cat# [TT210002]).