

Product datasheet for **RC220884**

Esa1 (FLOT2) (NM_004475) Human Tagged ORF Clone

Product data:

Product Type:	Expression Plasmids
Product Name:	Esa1 (FLOT2) (NM_004475) Human Tagged ORF Clone
Tag:	Myc-DDK
Symbol:	Esa1
Synonyms:	ECS-1; ECS1; ESA; ESA1; M17S1
Mammalian Cell Selection:	Neomycin
Vector:	pCMV6-Entry (PS100001)
E. coli Selection:	Kanamycin (25 ug/mL)



[View online »](#)

ORF Nucleotide Sequence:

>RC220884 representing NM_004475
 Red=Cloning site Blue=ORF Green=Tags(s)

TTTTGTAATACGACTCACTATAGGGCGGCCGGGAATTCGTCGACTGGATCCGGTACCGAGGAGATCTGCC
 GCC**CGGATCGCC**

ATGGGCAATTGCCACACGGTGGGGCCCAACGAGGCGCTGGTGGTTTCAGGGGGCTGTTGTGGTCCGACT
 ATAACAGTACGTGTTTGGCGGCTGGGCCCTGGCCTGGTGGTGTATCTCCGACACTCAGAGGATTTCCCT
 AGAGATTATGACGTTGCAGCCCCCTGCGAGGACGTAGAGACGGCCGAGGGGGTAGCTTTAACTGTGACG
 GGTGTCGCCCAGGTGAAGATCATGACGGAGAAGGAACTCCTGGCCGTGGCTTGTGAGCAGTTTCTGGGTA
 AGAATGTGCAGGACATCAAAAACGTCGCTCCTGCAGACCTGGAGGGACATCTGCGCTCCATCCTCGGGAC
 CCTGACAGTGGAGCAGATTTATCAGGACCGGGACCAGTTTGCCAAGCTGGTGCGGGAGGTGGCAGCCCT
 GATGTTGGCCGCATGGGCATTGAGATCCTCAGCTTACCATCAAGGACGTGTATGACAAAGTGGACTATC
 TGAGCTCCCTGGCAAGACGCAGACTGCCGTGGTGCAGAGAGATGCTGACATTGGCGTGGCCGAGGCTGA
 ACGGGACGCAGGCATCCGGGAAGCTGAGTGCAAGAAGGAGATGCTGGATGTGAAGTTCATGCCAGACACC
 AAGATTGCTGACTCTAAGCGAGCCTTCGAGCTGCAAAAAGTCAGCCTTCAGTGAGGAGGTTAACATCAAGA
 CAGCTGAGGCCAGTTGGCCTATGAGCTGCAGGGGGCCCGTGAACAGCAGAAGATCCGGCAGGAAGAGAT
 TGAGATTGAGGTTGTGCAGCGCAAGAAACAGATTGCCGTGGAGGCACAGGAGATCCTGCGTACGGACAAG
 GAGCTCATCGCTACAGTGCGCCGGCCTGCCGAGGCCGAGGCCACCAGCATCCAGCAGATTGCCGAGGGTG
 AAAAGGTGAAGCAGGTCCTCTTGGCACAGGCAGAGGCTGAGAAGATCCGCAAAATCGGGGAGGCGGAAGC
 GGCAGTCATCGAGGCGATGGGCAAGGCAGAGGCTGAGCGGATGAAGCTCAAGGCAGAAGCCTACCAGAAA
 TACGGGGATGCAGCCAAGATGGCCTTGGTGTAGAGGCCCTGCCCCAGATTGCTGCCAAAATCGCTGCC
 CACTTACCAAGGTCGATGAGATTGTGGTCTCAGTGGAGACAACAGTAAGGTCACATCAGAAGTGAACCG
 ACTGCTGGCCGAGCTGCCTGCCTGTGCATGCCCTCACAGGCGTGGACCTGTCTAAGATACCCCTGATC
 AAGAAGGCCACTGGTGTGCAGGTG

ACGCGTACGCGGCCGCTCGAGCAGAAACTCATCTCAGAAGAGGATCTGGCAGCAAATGATATCCTGGATT
 ACAAGGATGACGACGATAAGGTTTAA

Protein Sequence:

>RC220884 representing NM_004475
 Red=Cloning site Green=Tags(s)

MGNCHTVGPNEALVVSGCCGSDYKQYVFGGWAWAWWCISDTQRISLEIMTLQPRCEDVETAEGVALTVT
 GVAQVKIMTEKELLAVACEQFLGKNVQDIKNNVLQTLGHLRSILGTLTVEQIYQDRDQFAKLVREVAAP
 DVGRMGIEILSFTIKDVYDKVDYLSLTKTQTAVVQRDADIGVAEAERDAGIREAECKKEMLDVKFMADT
 KIADSKRAFELQKSAFSEEVNIKTAEALAYELQGAREQQKIRQEEIEIEVVQRKKQIAVEAQEILRTDK
 ELIATVRRPAEAEAHRIQQIAEGEKVKQVLLAQAEAEKIRKIGEAAVIEAMGKAEERMKLAAYQK
 YGDAAKMALVLEALPQIAAKIAAPLTKVDEIVLVSGDNSKVTSEVNRLLAELPASVHALTGVDLSKIPLI
 KKATGVQV

TRTRPLEQKLISEEDLAANDILDYKDDDDKV

Chromatograms:

https://cdn.origene.com/chromatograms/mk6157_a09.zip

Restriction Sites:

Sgfl-Mlul

Cloning Scheme:


ACCN: NM_004475

ORF Size: 1284 bp

OTI Disclaimer: The molecular sequence of this clone aligns with the gene accession number as a point of reference only. However, individual transcript sequences of the same gene can differ through naturally occurring variations (e.g. polymorphisms), each with its own valid existence. This clone is substantially in agreement with the reference, but a complete review of all prevailing variants is recommended prior to use. [More info](#)

OTI Annotation: This clone was engineered to express the complete ORF with an expression tag. Expression varies depending on the nature of the gene.

Components: The ORF clone is ion-exchange column purified and shipped in a 2D barcoded Matrix tube containing 10ug of transfection-ready, dried plasmid DNA (reconstitute with 100 ul of water).

Reconstitution Method:

1. Centrifuge at 5,000xg for 5min.
2. Carefully open the tube and add 100ul of sterile water to dissolve the DNA.
3. Close the tube and incubate for 10 minutes at room temperature.
4. Briefly vortex the tube and then do a quick spin (less than 5000xg) to concentrate the liquid at the bottom.
5. Store the suspended plasmid at -20°C. The DNA is stable for at least one year from date of shipping when stored at -20°C.

RefSeq: [NM_004475.3](#)

RefSeq Size: 2659 bp

RefSeq ORF: 1287 bp

Locus ID: 2319

UniProt ID: [Q14254](#)

Cytogenetics: 17q11.2

Domains: Band_7, Flotillin

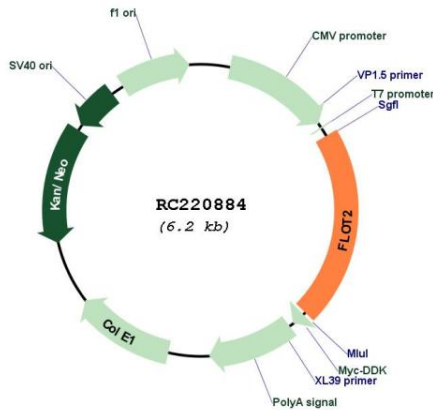
Protein Families: Druggable Genome

Protein Pathways: Insulin signaling pathway

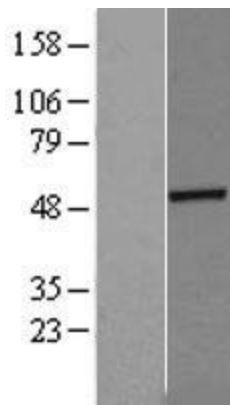
MW: 46.9 kDa

Gene Summary: Caveolae are small domains on the inner cell membrane involved in vesicular trafficking and signal transduction. This gene encodes a caveolae-associated, integral membrane protein, which is thought to function in neuronal signaling. [provided by RefSeq, Jul 2008]

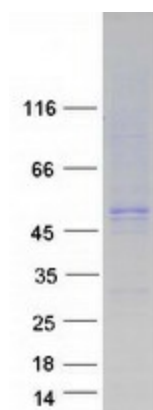
Product images:



Circular map for RC220884



Western blot validation of overexpression lysate (Cat# [LY401425]) using anti-DDK antibody (Cat# [TA50011-100]). Left: Cell lysates from untransfected HEK293T cells; Right: Cell lysates from HEK293T cells transfected with RC220884 using transfection reagent MegaTran 2.0 (Cat# [TT210002]).



Coomassie blue staining of purified FLOT2 protein (Cat# [TP320884]). The protein was produced from HEK293T cells transfected with FLOT2 cDNA clone (Cat# RC220884) using MegaTran 2.0 (Cat# [TT210002]).