

Product datasheet for **RC220868**

KIAA0754 (NM_015038) Human Tagged ORF Clone

Product data:

Product Type:	Expression Plasmids
Product Name:	KIAA0754 (NM_015038) Human Tagged ORF Clone
Tag:	Myc-DDK
Symbol:	KIAA0754
Mammalian Cell Selection:	Neomycin
Vector:	pCMV6-Entry (PS100001)
E. coli Selection:	Kanamycin (25 ug/mL)
ORF Nucleotide Sequence:	>RC220868 ORF sequence, codon optimized . Due to the complexity of NM_015038, the ORF clone is codon optimized for mammalian Expression. The nucleotide sequence differs from the reference sequence, yet the amino acid sequence remains identical.

Red=Cloning site Blue=ORF Green=Tags(s)

TTTTGTAATACGACTCACTATAGGGCGGCCGGAATTCGTCGACTGGATCCGGTACCGAGGAGATCTGCC
GCC**CGGATCGCC**

ATGGGGAAACCGCTGTCTCGCCCGATTGTCTGAGGAGAAACCCAAGTTGTCTCGGCAAGGGGGAGGAGG
AAGACGGATATATCGAGGATTGTTACGTGCCTCAACGCTCCATTTATGACTATGCGGATTAACGAACA
GATCGACCAGGGTAGCAAGCTGAATCAGACGAGCAAGAGCACTATGGAGAAGATGGAAGGAAGTACAATT
TCAAGTAACGGGACATTGGGAGCAGCCAGCAACGTATTCGAGAGCCGAGCACCCGAAGGGAAAAAACTGG
ACGAACGGATCATTTTCGACGCACTCAAAGTGAAGTTCAGACGTTTCAAGAGCGCACCCGTCACCTAG
AAGAAGGCCAACGCTGAACGAAAAGATAATGTAACAGAAAGGAGTTGGAATCTTTTCATGCCTCCTAAC
TTCCCGAATTCGCGAACGGATTGAAGCGAGTCTGTCTGAGGTGTCTGAAGCTGGTGCAGTAACCCAT
CCTTGCAGGAAAAAAGAGTCTAGCAGTCTCTGACAGAATCAAGTGGCCATCTTGACCATCGCGAGCC
CCAATCCGAGTCTGTACCTTGGAGCACGTGTCTAAGAGCATAGGCATCCCGAGGTGCAAGACTTTAAG
AACCTGTCTGGCGATTGCCAGGACTTCCGTTCCAACAGCACTCAGCTAATCCCCCTCATGATTCCAGC
CGGTGGAGTCCGAAGCAGTAGCGACTTCTGGTAATACCGATGTGATGCAAGAAAGCAGATTAGCTCCGC
AACCTGGCCTCGAGCCACAAAATCTCTTGCCTAAGGAGGATTTAGCGAGAAACAGCACCCGTTGGGTGAT
ACGGCCTGACTGTGAAATGCCCCCTGTCTCCTTGTCTCAGCGAGGAGCTGCTTATCCCGAGCTGC
ACGTCCTGATTACACCCTCCTTGAGGGAGAAGACCGAATCTGAGCTGAAGTTTGAGGAAGACGAGCGCTG
GATCATGATGGAGGCAGAGGGCGAGTGGGAAGAGGAAAAGCTCTCAGATAGGGAAAAGACCTTTCTGATG
GCAGACGAGAAAAATAGCCTTGTGACATCTTCAAGAGCGAGAACAGGCAACACCGCCGTAGTAGAGG
ACGGTTCTGACTGCCTGGCGCCGTGCTTAGGACATTTCGGCACCTCTCATTGGGTCAAATCTGCTGTCC
TGATGATCCCCAGCCGCTAAAGATCAACTTGCAACTGTGCCAAGGATATTCTTCTGACTGCGATTGT



[View online »](#)

GTTCTGACTGGCGAGGACATCCTGGGCGAAGTCGCGAACCCTGCTCAGGGTCTGGAAGGACTTGTGA
 GCGACTCAGCATGTAAGTGTGGGACGATCGATGCAGAGCAACTGAGCGACTGATAGTGTTCAGATGTT
 CCTGGAACCGAGAAAGAATGCCTTTGTGAAGAGGGCGTTACCCCTGGTTGAGCTGCAGAACCAATT
 TCAAGCGAGGGACTTGCAGCTAGCCAGGACGCCGAGAACCTGCTGGTCACTCTCCACTTTAGCGGCGTG
 CCCTTGAAAAAGAACAGCACCTTGGACTCCTGCATGTGAGAGCAAAGGACTACGACACGAGGCTCGACTG
 TGGTACTTTAACACGCTCGATTCAAGCCAGGTCCCAAACGCAGTGGAGCTGATTGCCATGTGCACATT
 ATGCGAGACACTAGTACTGTTTCAAAGGAAGAATGCGAAAAGGTTCCGTTCTCCACCGGACGACAGCAAT
 TCAAGAGTCGGCAACCCGCTGATCTGGACAGTCTCGAGAAATTGGACCCTGGCGGACTTCTGAACAGTGA
 CCACAGAGTTTCATAGAGAAAAGCTCTCAGGCTTCATCGCCAGCGAGCTGGCCAAGGATAACGGATCT
 CTGAGCCAAGGAGATTGTAGCCAGACTGAAGGTAATGGAGAGGAGTGCATTGAGCGCGTTACCTTCAGTT
 TTGCCTTAAACATGAGCTTACCGATGTCAAGCGGGCCTGAGGTGCAAGTGTGTACGAATCCAACCT
 GCTGACAGACGAGATACACCTGGAGTCTGGCAACGTAACGTCAACCAGGAGAACAATAGTCTGACTAGC
 ATGGGAAACGTGGTGACATGCGAGCTCTGTGCGAGAAAGTTGCGATGAAGATGGTGGAGCTAAAGAGC
 TGGACTATCAGGCCACTCTGCTCGAAGACCAAGCACCAGCCACTCCACCGCAACTTTCCCGAGCAGGT
 CTTTCAGGATCTTCAACGAAAGTCTCCTGAATCCGAGATTCTGTCACTTACCTGCTTGTGAGGAGCTG
 AGGCTCAACCCAGACGGTGTGAAAAGTGTGAACGATACCAAACCCGAGCTTAACTGGCCCTTTCGAGG
 GCGGAGAAATGGAGAGAAGGACTCCGACTCATTCTGAATATTTCCCTGAGAAAACAGGTTACAAAAGC
 CGGCAATACCGAGCCAGTGTGGAGGAGTGGATCCCTGTGTTGCAGCGGCCCTCCCGCACAGCCGAGTC
 CCAACTGTCAAAGATGCCCTCGATGCCGCATTGCCATGCTCCTGAAGAGGGCACTAGTATTGCCGCGGTG
 CCGCCCTGAGGGGACCCTGTGGTTGCCGCCCTGGTGCATTCCCTCACGAAGATACTGGTGGCATC
 AATCGTCTCTTTGGAAGAAGAAGATGTGACTGCCGCCCGCTGAGCGCACAGAGCGAGCAACTGTCCCG
 GCGGACTGTTAGCGTGCCAGAGGGCACAGCGCAGTGTGCGTGTCTTACCAGGAGAAACAGCAC
 CCGCCGTTGCCGCCATAAACACAGGAAGGAATGTGAGCAGTGCAGGCTTCTCCCTGAATGGGAGG
 TCTCGCTATCACAGTACCTATCACAGAAGAGGACGGCACCCCTGAGGGGCCGTCACACCGCCACAAC
 GTGCATGCACCTGAGGAGCTGACACAGCAGTGTGAGAGTGTCCACTCCAGAGGAGCCCGCTTCCAG
 CTGCGGCTGTGCCACACCAGAGGAGCCACTTCTCCTGCTGCAGCTGTACCCACCCTGAGGAACCTAC
 ATCCCGGCTGCCGAGTACCCCCAGAGGAGCAACCTCTCCTGCCGCTGCCGTACTACTCCTGAG
 GAGCTACTAGCCCGCCGCCGCTTCCACCCCTGAAGAGCCGACATCCCTGCCCGCTGTGCCCA
 CCCCTGAGGAACCAACTTACCCGCTGTGCAGTTCACCCACAGAAAGAACCCACATCTCCAGTGCCTG
 AGTCCCTACCCCTGAGGAGCAACCTCTCAGCCGCTGCCGTACCACTCCGAGGAACCTGCCTCTCC
 GCCGCGCGGTCCCAACTCCTGAGGAACCTGCATCACCAGCCGCGCTGTGCCTACTCCTGAAGAGCCG
 CGTTTCTGCCCTGCAGTACCAACACCAGAGGAATCCGCAAGTCCCGCGGTGGCCGTTCTTACACCGGA
 GGAGTCAGCGAGTCCAGCGGAGCCGTCGCCACTCCCGCCGAAAGTGCCTCTTTTGCAGCTGTTGTAGCG
 ACTCTGGAGGAGCAACCAAGTCCCGCAGCTTCCGTGCCAACTCCAGCTGCCATGGTGGCCACTTTGGAGG
 AATTCACCTCCCGCAGCAGGAGTGTCCCAACATCAGAAGAGCCCGCCAGTCTCGCAGCAGCGTTAGCAA
 TCCCGAAGAGCCTACTAGCCCTGCCGCTGCCGTGCCAACCCTGGAAGAGCCACCAGCAGCGCAGTGC
 GTGCTTACACTGAGGAACCTCATCCCCGCGCGCTCCGTACCGACCCAGAGCCAGTGCAGTGCCTG
 CCGCCGCGTTTCCAATCTGAGGAGCCCGCAAGCCAGCCGAGTGTCCACGCCGAAAGTTGCCG
 AATCCCCGCGCTAGCGTTCCAACCCCTGAAGTGCAGCGATCCCCGCGCTGCCGTGCCCAATGGAA
 GAAGTGAATCCATCGGAGTCCATTCTGGGGTGTCTGCCACACAGACAGCGTGCAGTACAGCGAGG
 AAGGTAATCCAGTCTGAGGAGGCTTCTCCACCGAATGTGGATTAAGGAAGATCTTACTCTTGT
 GTTCGGCATCAAGGAGGTGACGTCAACAGTCTGCATGGGAAGTCCCTCTGGCTGCAACGGCGGGGCTG
 AACAGTGACGAAGTTATCGTGCATTCGATTACAGGCAAGGACTGAAGAGCAAGTCCGTTCCCGGAC
 TCACGTGGTGG

ACGCGTACGCGGCCGCTCGAGCAGAAACTCATCTCAGAAGAGGATCTGGCAGCAATGATATCCTGGATT
 ACAAGGATGACGACGATAAGGTTTAA

Protein Sequence: >RC220868 representing NM_015038
 Red=Cloning site Green=Tags(s)

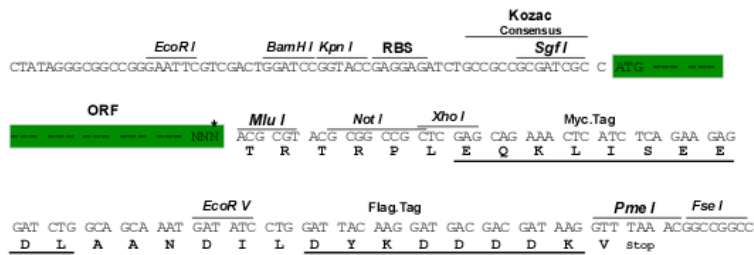
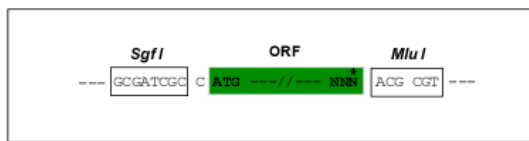
MGKPLSRPDCLRRNPSCLGKGEEDGYIEDCYVQRSIYDTMRINEQIDQGSKLNQTSKSTMEKMEGSTI
 SSNGTLGAASNVFESRAPEGKKLDERIIFDALKLSSDVQKSAPVPPRRRPNNAERKDNVNRSSWKSFMPPN
 FPEFAERIEASLSEVSEAGASNPQLQEKKESSALTESSGHLDHREPQSESVTLEHVSKSIGIPEVQDFK
 NLSGDCQDFRFQQHSANPPHEFQPVSEAVATSGNTDVMQESRFSSATWPRAKSLAKGGFSEKQHPLGD
 TACTVEMPPPLSPCLSEELLDPQLHVLITPSLREKTESELKFEEDERWIMMEAEGEWEEKLSDREKTFM
 ADEKNSLADIFEEREQANTAVVEDGSDCLAALVLRFTGHLSLQICCPDDPOPAKDQLATVPKDIPLDCDC
 VLTGEDILGEVANRTAQGLEGLVSDSACTVGTIDAEQLSDTDSVMQFLELEKECLCEEGVPLVELQNQI
 SSEGLAASQDAENLLVISHFSGAALEKEQHLGLLHVRADYDTRLDCGYFNTLDSQVPAVELIAHVDI
 MRDSTVSKKECEKVPFSPRTAEFKSRQPADLDSLEKLDPGLLNSDHRVSHEEKLSGFIASELAKDNGS
 LSQGDCSQTEGNGEECIERVTFSAFNHSLTDVTSQPEVEVLYESNLLTDEIHLESGNVTVNQENSLTS
 MGNVVTCELVEKVCDEDEGEAKELDYQATLLEDQAPAHFHRNFPEQVFDLQRKSPSEIILSLHLLVEEL
 RLNPDGVETVNDTKPELNVASSEGGEMERRRSDSFLNIFPEKQVTKAGNTEPVL EEWIPVLQRPSRTAAV
 PTVKDALDAALPSPEEGTIAAVPAPEGTAVVAALVFPFHEDILVASIVSLEEDVTAAAVSAPERATVP
 AVTVSVPEGTAAVAAVSSPEETAPAVAAAITQEGMSAVAGFSPEWAALAITVPIITEEDGTPEGPVTPATT
 VHAPEEPDTAAVRVSTPEEPASPAAAVPTPEEPTSPAAAVPTPEEPTSPAAAVPPPPEEPTSPAAAVPTPE
 EPTSPAAAVPTPEEPTSPAAAVPTPEEPTSPAAAVPTPEEPTSPAAAVPTPEEPTSPAAAVPTPEEPASP
 AAAVPTPEEPASPAAAVPTPEEPAPAVPTPEESASA AVAVPTPEESASPAAAVPTPAESASF AA VVA
 TLEEPTSPAASVPTPAAMVATLEEFTSPAASVPTSEEPASLAAAVSNPEEPTSPAAAVPTLEEPTSSAAA
 VLTPEELSSPAASVPTPEEPASPAAAVSNLEEPASPAAVPTPEVAAIPAAVPTPEVPAIPAAAVPPME
 EVSPIGVPFLGVAHTDSVPISEEGTPVLEEASSTGMWIKEDLSLVFGIKEVTSTVLHGKVPLAATAGL
 NSDEVI VHFDSGKGLKSKYRFAGLTWW

TRTRPLEQKLISEEDLAANDILDYKDDDDKV

Restriction Sites:
Cloning Scheme:

SgfI-MluI

Cloning sites used for ORF Shuttling:

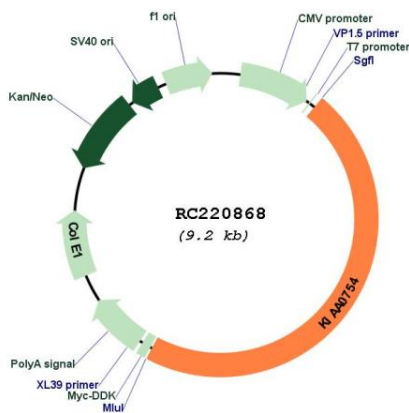


* The last codon before the Stop codon of the ORF

ACCN: NM_015038
ORF Size: 4281 bp

OTI Disclaimer:	The molecular sequence of this clone aligns with the gene accession number as a point of reference only. However, individual transcript sequences of the same gene can differ through naturally occurring variations (e.g. polymorphisms), each with its own valid existence. This clone is substantially in agreement with the reference, but a complete review of all prevailing variants is recommended prior to use. More info
OTI Annotation:	This clone was engineered to express the complete ORF with an expression tag. Expression varies depending on the nature of the gene.
Components:	The ORF clone is ion-exchange column purified and shipped in a 2D barcoded Matrix tube containing 10ug of transfection-ready, dried plasmid DNA (reconstitute with 100 ul of water).
Reconstitution Method:	<ol style="list-style-type: none"> 1. Centrifuge at 5,000xg for 5min. 2. Carefully open the tube and add 100ul of sterile water to dissolve the DNA. 3. Close the tube and incubate for 10 minutes at room temperature. 4. Briefly vortex the tube and then do a quick spin (less than 5000xg) to concentrate the liquid at the bottom. 5. Store the suspended plasmid at -20°C. The DNA is stable for at least one year from date of shipping when stored at -20°C.
RefSeq:	NM_015038.1 , NP_055853.1
RefSeq Size:	7410 bp
RefSeq ORF:	4284 bp
Locus ID:	643314
UniProt ID:	O94854
Cytogenetics:	1p34.3
MW:	150.5 kDa

Product images:



Circular map for RC220868