

Product datasheet for **RC220864**

p73 (TP73) (NM_005427) Human Tagged ORF Clone

Product data:

Product Type:	Expression Plasmids
Product Name:	p73 (TP73) (NM_005427) Human Tagged ORF Clone
Tag:	Myc-DDK
Symbol:	p73
Synonyms:	P73
Mammalian Cell Selection:	Neomycin
Vector:	pCMV6-Entry (PS100001)
E. coli Selection:	Kanamycin (25 ug/mL)



[View online »](#)

ORF Nucleotide
Sequence:

>RC220864 representing NM_005427
Red=Cloning site Blue=ORF Green=Tags(s)

TTTTGTAATACGACTCACTATAGGGCGGCCGGAATTCGTCGACTGGATCCGGTACCGAGGAGATCTGCC
GCC**CGGATCGCC**

ATGGCCCAGTCCACCGCCACCTCCCTGATGGGGCACCACGTTTGGACCTCTGGAGCTCTCTGGAAC
CAGACAGCACCTACTTCGACCTTCCCAGTCAAGCCGGGGGAATAATGAGGTGGTGGGCGGAACGGATTC
CAGCATGGACGTCTTCCACCTGGAGGGCATGACTACATCTGTCTATGGCCAGTTCAATCTGCTGAGCAGC
ACCATGGACCAGATGAGCAGCCGCGCGCCTCGGCCAGCCCTACACCCAGAGCAGCCGCCAGCGTGC
CCACCCACTCGCCCTACGCACAACCCAGCTCCACCTTCGACACCATGTGCGCCGGCGCCTGTCTCCCTC
CAACACCGACTACCCCGACCCACCACTTTGAGGTCACTTTCCAGCAGTCCAGCAGGCCAAGTCAGCC
ACCTGGACGTACTCCCGCTCTGAAGAACTCTACTGCCAGATCGCCAAGACATGCCCATCCAGATCA
AGGTGTCCACCCGCCACCCAGGCACTGCCATCCGGGCCATGCCTGTTTACAAGAAAGCGGAGCAGT
GACCGAGTCTGTAAGCCTGCCCCAACACAGCTCGGGAGGGACTTCAACGAAGGACAGTCTGTCTCA
GCCAGCCACCTCATCCGGTGGAAAGCAATAATCTCTCGCAGTATGTGGATGACCCTGTACCCGGCAGGC
AGAGCGTCTGGTGCCTATGAGCCACCACAGGTGGGGACGGAATTCACCACCATCTGTACAATTCAT
GTGTAACAGCAGCTGTGTAGGGGCATGAACCGCGGCCCATCCTCATCATCACCTGGAGATGCGG
GATGGGACGGTCTGGGCGCGCGTCTTTGAGGGCCGATCTGCGCCTGTCTGGCCGCGACCGAAAAG
CTGATGAGGACCACTACCGGGAGCAGCAGGCCCTGAACGAGAGCTCCGCCAAGAAGCGGGCCGACGAA
GCGTGCCTTAAGCAGAGCCCCCTGCCGTCCCGCCCTTGGTCCCGGTGTAAGAAGCGGCGCATGGA
GACGAGGACACGTACTACCTTCAGGTGCGAGGCCGGGAGAATTTGAGATCCTGATGAAGCTGAAAGAGA
GCCTGGAGCTGATGGAGTTGGTCCCGCAGCCACTGGTGGACTCCTATCGGCAGCAGCAGCAGTCTCTACA
GAGGCCGAGTCACTACAGCCCCGTCTACGGGCCGGTCTCTCGCCATGAACAAGGTGCACGGGGGC
ATGAACAAGCTGCCCTCCGTCAACCAGCTGGTGGCCAGCCTCCCCCGCAGATTGCGCAGCTACACCCA
ACCTGGGGCCCGTGGGCCCGGGATGCTCAACAACCATGGCCACGCAGTCCAGCCAACGGCGAGATGAG
CAGCAGCCACAGCGCCAGTCCATGGTCTCGGGTCCCCTGCACTCCGCCACCCCTACCACGCCGAC
CCCAGCTCGTCAGTTTTTAAACAGGATTGGGGTGTCCAACTGCATCGAGATTTACCTCCCAAGGGT
TACAGAGCATTTACCACCTGCAGAACCTGACCATTGAGGACCTGGGGCCCTGAAGATCCCCGAGCAGTA
CCGCATGACCATCTGGCGGGCCTGCAGGACCTGAAGCAGGGCCACGACTACAGCACCGCGCAGCAGCTG
CTCCGCTCTAGCAACCGCGCCACCATCTCCATCGCGGCTCAGGGGAAGTGCAGCGCCAGCGGGTCTATGG
AGGCCGTGCACTTCCGCGTGCGCCACACCATCACCATCCCAACCGCGGGGCCAGGCGCGGCCCTGA
CGAGTGGGCGGACTTCGGCTTCGACCTGCCGACTGCAAGGCCCGCAAGCAGCCATCAAGGAGGAGTTC
ACGGAGGCCGAGATCCAC

ACGCGTACGCGGCCGCTCGAGCAGAACTCATCTCAGAAGAGGATCTGGCAGCAATGATATCCTGGATT
ACAAGGATGACGACGATAAGGTTTAA

Protein Sequence: >RC220864 representing NM_005427
Red=Cloning site Green=Tags(s)

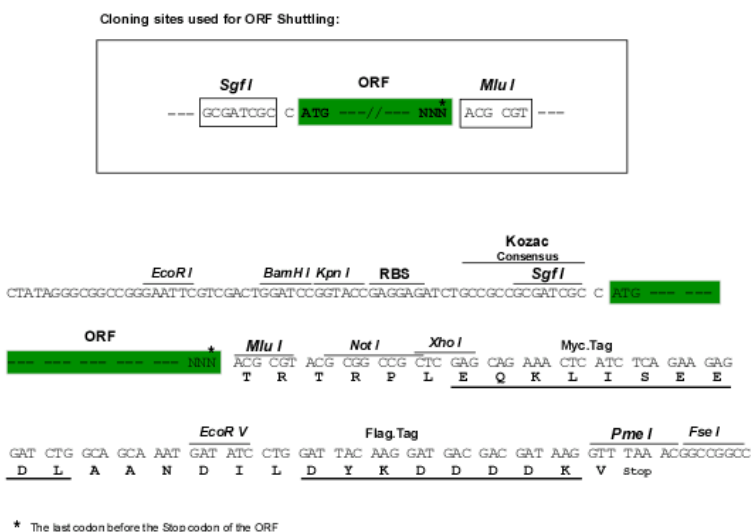
```
MAQSTATSPDGGTTFEHLWSSLEPDSTYFDLPQSSRGNNNEVGGTDSSMDVHFLEGMTTSVMAQFNLLSS
TMDQMSSRAASAPYTPPEHAASVPTHSPYAQPSSFTDMSPPAPVIPSNTDYPGPHHFVTFQSSSTAKSA
TWTYSPLLLKLYCQIAKTCPIQIKVSTPPPGTAIRAMPVYKKAHVTDVVKRCPNHELGRDFNEGQSAP
ASHLIRVEGNL SQYVDDPVTGRQSVVVPYEPQVGTFTTILYNFMCNSSCVGGMNRRLIIITLEM R
DGQVLGRRSFEGRICACPGDRKADHDHYREQQALNESSAKNGAASKRAFKQSPAPALGAGVKKRRHG
DEDYYLQVRGRENFEILMKLKESELELMELVPQPLVDSYRQQQLLQRP SHLQPPSYGPVLSPMNKVHGG
MNKLPSVNQLVGQPPPHSSAATPNLGPVPGMLNNHGAVPANGEMSSSSHAQSMVSGSHCTPPPPYHAD
PSLVSFLTGLGCPNCIEYFTSQGLQSIYHLQNL TIEDLGALKIPEQYRMTIWRGLQDLKQGHDYSTAQQL
LRSSNAATISIGGSGELQRQVMEAVHFRVRHTITIPNRGGPGGGPDEWADFGFDLPDCKARKQPIKEEF
TEAEIH
```

TRTRPLEQKLI SEEDLAANDILDYKDDDDKV

Chromatograms: https://cdn.origene.com/chromatograms/mg2702_e09.zip

Restriction Sites: SgfI-MluI

Cloning Scheme:



ACCN: NM_005427

ORF Size: 1908 bp

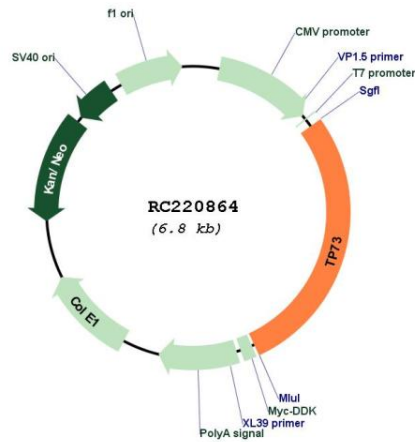
OTI Disclaimer: The molecular sequence of this clone aligns with the gene accession number as a point of reference only. However, individual transcript sequences of the same gene can differ through naturally occurring variations (e.g. polymorphisms), each with its own valid existence. This clone is substantially in agreement with the reference, but a complete review of all prevailing variants is recommended prior to use. [More info](#)

OTI Annotation: This clone was engineered to express the complete ORF with an expression tag. Expression varies depending on the nature of the gene.

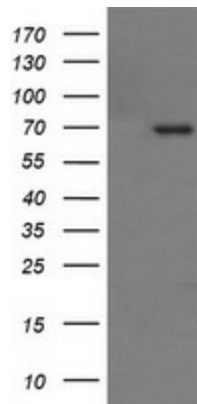
Components: The ORF clone is ion-exchange column purified and shipped in a 2D barcoded Matrix tube containing 10ug of transfection-ready, dried plasmid DNA (reconstitute with 100 ul of water).

Reconstitution Method:	<ol style="list-style-type: none">1. Centrifuge at 5,000xg for 5min.2. Carefully open the tube and add 100ul of sterile water to dissolve the DNA.3. Close the tube and incubate for 10 minutes at room temperature.4. Briefly vortex the tube and then do a quick spin (less than 5000xg) to concentrate the liquid at the bottom.5. Store the suspended plasmid at -20°C. The DNA is stable for at least one year from date of shipping when stored at -20°C.
Note:	Plasmids are not sterile. For experiments where strict sterility is required, filtration with 0.22um filter is required.
RefSeq:	<u>NM_005427.1, NP_005418.1</u>
RefSeq Size:	2234 bp
RefSeq ORF:	1911 bp
Locus ID:	7161
UniProt ID:	<u>O15350</u>
Cytogenetics:	1p36.32
Protein Families:	Druggable Genome, Transcription Factors
Protein Pathways:	Neurotrophin signaling pathway, p53 signaling pathway
MW:	69.4 kDa
Gene Summary:	This gene encodes a member of the p53 family of transcription factors involved in cellular responses to stress and development. It maps to a region on chromosome 1p36 that is frequently deleted in neuroblastoma and other tumors, and thought to contain multiple tumor suppressor genes. The demonstration that this gene is monoallelically expressed (likely from the maternal allele), supports the notion that it is a candidate gene for neuroblastoma. Many transcript variants resulting from alternative splicing and/or use of alternate promoters have been found for this gene, but the biological validity and the full-length nature of some variants have not been determined. [provided by RefSeq, Feb 2011]

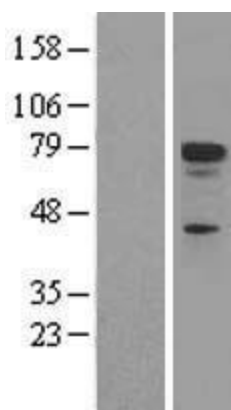
Product images:



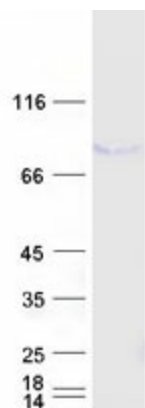
Circular map for RC220864



HEK293T cells were transfected with the pCMV6-ENTRY control (Cat# [PS100001], Left lane) or pCMV6-ENTRY TP73 (Cat# RC220864, Right lane) cDNA for 48 hrs and lysed. Equivalent amounts of cell lysates (5 ug per lane) were separated by SDS-PAGE and immunoblotted with anti-TP73(Cat# [TA506470]). Positive lysates [LY417321] (100ug) and [LC417321] (20ug) can be purchased separately from OriGene.



Western blot validation of overexpression lysate (Cat# [LY417321]) using anti-DDK antibody (Cat# [TA50011-100]). Left: Cell lysates from untransfected HEK293T cells; Right: Cell lysates from HEK293T cells transfected with RC220864 using transfection reagent MegaTran 2.0 (Cat# [TT210002]).



Coomassie blue staining of purified TP73 protein (Cat# [TP320864]). The protein was produced from HEK293T cells transfected with TP73 cDNA clone (Cat# RC220864) using MegaTran 2.0 (Cat# [TT210002]).