

Product datasheet for **RC220861**

ZNF429 (NM_001001415) Human Tagged ORF Clone

Product data:

Product Type:	Expression Plasmids
Product Name:	ZNF429 (NM_001001415) Human Tagged ORF Clone
Tag:	Myc-DDK
Symbol:	ZNF429
Mammalian Cell Selection:	Neomycin
Vector:	pCMV6-Entry (PS100001)
E. coli Selection:	Kanamycin (25 ug/mL)



[View online »](#)

ORF Nucleotide Sequence:

>RC220861 representing NM_001001415
 Red=Cloning site Blue=ORF Green=Tags(s)

TTTTGTAATACGACTCACTATAGGGCGGCCGGAATTCGTCGACTGGATCCGGTACCGAGGAGATCTGCC
 GCC**GCGATCGCC**

ATGGGACCATTGACATTTACAGATGTGGCCATAGAATTCTCTCTGGAGGAGTGGCAGTGCCTGGACACAG
 CACAACAGAACTTATATAGAAATGTGATGTTAGAGAACTACAGAACTTGGTCTTCTGGGTATTGCTGT
 TTCTAAGCCAGACCTAATCACTTGTCTAGAGAAAAGAAAAGAACCCTGCAAGATGAAGCGACATGAAATG
 GTGGATGAACCCCGAGTTGTGTGTTCTCATTGCTGAAGACTTTTGGCCAGAGCAAGACATAAAAGATT
 CTTTCCAAAAAGTGACTGAGGAGATATGATAAAGCTGGACATGAGAAGTTACAATTAAGAAAAGGCTA
 TAAAAGTGTAGGTGATTGAAGCTATACAAAGGAGTTATAATGGACTTAACCAATGTTTGACTTACC
 CAGAGCAAATGTATCACTGTGATATATGTAAGTCTTTTATGCATTTTCAAATGCAGATAGATACA
 AGACAAGACATACTGAAAGAAACCTTCCAGTGTAAAAATGTGGCAAATCATTGTCATGCTTTCACA
 ACTAACTCAACATAAGAAAATTCATATTAGAGAGAATACCTACAGATGTAAGAATTTGGCAATGCCTTT
 AATCAGTCCTCAGCCCTACTAACCATAGAGAATTTATGTTGGTGAGAAACACTACAGATGTGAAGAAT
 GTGGCAAAGCATTAAACCACTACTCAACCTTACTAACCATAGAGAATTCATACTGGAGAGAAACCTTA
 CAAATGTAAGAATGTGGCAAAGCCTTAGCAGGTAACCTTACTACCCATAAGAGAATTCATTCT
 GGAGAGAAGCCCTACAAATGTGATGAATGTGGCAAACCTTAGCATATCCTCAACCTTACTAACATA
 AGATAATTCATACTGAAGAGAAACCTACAAATGTAAAGAATGTGGCAAAGCCTTAAACCGGTCCTCAAC
 CCTTACTAGCCATAAGAGAATACATACTGGTGAGAAACCTACAAATGTGAAGAATGTGGCAAAGCCTTT
 AACTGGTCTTCACTCTTACTAACATAAGGTAATTCATACTGGAGAGAAGCCCTACAAATGTGAAGAAT
 GTGGCAAAGCCTTTAACCAGTCTTCAAGACTTACTCGACATAAAAAAATTCATACTGGAGAGGAACCTTA
 CAAATTTGAAAAATGTGGCAGAGTTTTTACCTGTTCTCAACACTTACTCAAGACAAGAAAATTCATACT
 GGAGAGAAACCTACAATGTGAAGAATGTGGCAAAGTTTTTACCTATTCTCTACACTTACTAGACATA
 AGAGAATTCATACTGAAGAGAAACCTATAAATGTAACGAATGTGGCAAAGCCTTTAACCGGTCCTCACA
 CCTTACTAGCCATAGGAGAATTCATACTGGAGAGAAACCTACAAATGTGAAGAATGTGGCAAAGCCTTT
 AAGCAGTCCTCAAACCTAACAGTCATAAAAAAATTCATAGTGGAGAGAAACCTACAAATGTGAAGAAT
 GTGGCAAAGCCTTTATCCTGTCTCAAGACTTACTCAACATAAGAAAATTCATACTGGAGAGAAACCTTA
 CAAATGTGAAGAATGTGGCAAAGCCTTTAACCGGTCCTCAAGACTTACTCAACATAAGAAAATTCATACT
 GGAGAGAAACCTACAAATGTAAACAATGTGACAAAGCCTTTACCACTCCTCAAACCTTAGTAGTCATA
 AGAAAATTCATAGTGGAGAGAAACCTACAAATGTGAAGAATGTGGCAAAGCCTTTAATCGGTCCTCAAG
 ACTTACTCAACATAAGAAAATTCATACTAGAGAGAAACCTTACAAATGTGAAGAATGTGGCAAAGCCTTT
 ACCCGTCTTCAAGACTTACTCAACATAAGAAAATTCATAGGATGGGTGTGGTGGCTCATGCCTGTAATC
 CCAGCACTTTGGGAGGCAGAGGTGGCGGATCACGAGGTCAGGAGATCGAGACCGTCCTGGC

ACGCGTACGCGGCCGCTCGAGCAGAACTCATCTCAGAAGAGGATCTGGCAGCAAATGATATCCTGGATT
 ACAAGGATGACGACGATAAGGTTTAA

Protein Sequence: >RC220861 representing NM_001001415
 Red=Cloning site Green=Tags(s)

MGPLTFTDVAIEFSL EEWQCLDTAQQNL YRNVMLENYRNLVFLGIAVSKPDLITCLEKEKEPCKMKRHEM
 VDEPPVCSHF AEDFWPEQDIKDSFQKVTLRRYDKRGHENLQLRKGKTVGDCKLYKGGYNGLNQCLTLT
 QSKMYHCDIYVKVYAF SNADRYKTRHTGKKPFQCKKCGKSF CMLSQTQHKKIHIRENTYRCKEFGNAF
 NQSSALTNHKRIYVGEKHRYCEECKAFNHYSTLTNHKRIHTGEKPYKCKEKGAFSRYSTLTTHKRIHS
 GEKPYKDECGKTF SISSTFTKHKIIHTEEKPYKCKEKGAFNRSSTLTSHKRIHTGEKPYKCEECKAF
 NWSSTLT KHKVIHTGEKPYKCEECKAFNQSSRLTRHKKIHTGEEPYKFEKCGRVFTCSSTLTQDKKIHT
 GEKPYNCEECKGVFTYSSTLTRHKKIHTEEKPYKCECKAFNRSSHLTSHRRIHTGEKPYKCEECKAF
 KQSSNLNSHKKIHSGEKPYKCEECKAFILSSRLTQHKKIHTGEKPYKCEECKAFNRSSRLTQHKKIHT
 GEKPYKCKQCDKAFTHSSNLSSHKKIHSGEKPYKCEECKAFNRSSRLTQHKKIHTREKPYKCEECAKAF
 TRSSRLTQHKKIHRMGVVAHACNPSTLGGRGGRITRSGDRDRPG

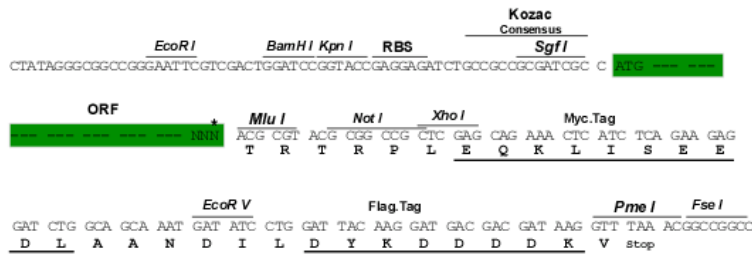
TRTRPLEQKLI SEEDLAANDILDYKDDDDKV

Chromatograms: https://cdn.origene.com/chromatograms/mk8041_d04.zip

Restriction Sites: Sgfl-MluI

Cloning Scheme:

Cloning sites used for ORF Shuttling:



* The last codon before the Stop codon of the ORF

ACCN: NM_001001415

ORF Size: 2022 bp

OTI Disclaimer: Due to the inherent nature of this plasmid, standard methods to replicate additional amounts of DNA in E. coli are highly likely to result in mutations and/or rearrangements. Therefore, OriGene does not guarantee the capability to replicate this plasmid DNA. Additional amounts of DNA can be purchased from OriGene with batch-specific, full-sequence verification at a reduced cost. Please contact our customer care team at custsupport@origene.com or by calling 301.340.3188 option 3 for pricing and delivery.

The molecular sequence of this clone aligns with the gene accession number as a point of reference only. However, individual transcript sequences of the same gene can differ through naturally occurring variations (e.g. polymorphisms), each with its own valid existence. This clone is substantially in agreement with the reference, but a complete review of all prevailing variants is recommended prior to use. [More info](#)

OTI Annotation: This clone was engineered to express the complete ORF with an expression tag. Expression varies depending on the nature of the gene.

Components: The ORF clone is ion-exchange column purified and shipped in a 2D barcoded Matrix tube containing 10ug of transfection-ready, dried plasmid DNA (reconstitute with 100 ul of water).

Reconstitution Method:

1. Centrifuge at 5,000xg for 5min.
2. Carefully open the tube and add 100ul of sterile water to dissolve the DNA.
3. Close the tube and incubate for 10 minutes at room temperature.
4. Briefly vortex the tube and then do a quick spin (less than 5000xg) to concentrate the liquid at the bottom.
5. Store the suspended plasmid at -20°C. The DNA is stable for at least one year from date of shipping when stored at -20°C.

RefSeq: [NM_001001415.4](#)

RefSeq Size: 2361 bp

RefSeq ORF: 2025 bp

Locus ID: 353088

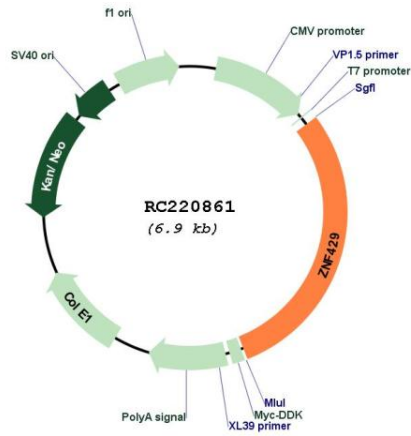
UniProt ID: [Q86V71](#)

Cytogenetics: 19p12

MW: 78 kDa

Gene Summary: May be involved in transcriptional regulation.[UniProtKB/Swiss-Prot Function]

Product images:



Circular map for RC220861