

## Product datasheet for RC220858

### CHI3L2 (NM\_001025197) Human Tagged ORF Clone

#### Product data:

Product Type:	Expression Plasmids
Product Name:	CHI3L2 (NM_001025197) Human Tagged ORF Clone
Tag:	Myc-DDK
Symbol:	CHI3L2
Synonyms:	CHIL2; YKL-39; YKL39
Mammalian Cell Selection:	Neomycin
Vector:	pCMV6-Entry (PS100001)
E. coli Selection:	Kanamycin (25 ug/mL)
ORF Nucleotide Sequence:	>RC220858 representing NM_001025197 Red=Cloning site Blue=ORF Green=Tags(s)

TTTTGTAATACGACTCACTATAGGGCGGCCGGAATTCGTCGACTGGATCCGGTACCGAGGAGATCTGCC  
GCC**CGATCGCC**

ATGGGAGCAACCACCATGGACCAGAAGTCTCTCTGGGCAGGATCTGCCTACAACTGGTTTGCTACTTTA  
CCAAGTGGTCCCAGGACCGGCAGGAACCAGGAAAATTCACCCCTGAGAATATTGACCCCTCCTATGCTC  
TCATCTCATCTATTCATTGCGCCAGCATCGAAAACAACAAGTTATCATCAAGGACAAGAGTGAAGTGATG  
CTCTACCAGACCATCAACAGTCTCAAACCAAGAATCCCAAAGTAAAATTCCTTGTCCATTGGAGGGT  
ACCTGTTTGGTCCAAAGGGTCCACCCTATGGTGGATTCTTCTACATCACGCTTGAATTCATTAACTC  
CATAATCCTGTTTCTGAGGAACCATAACTTTGATGGACTGGATGTAAAGCTGGATCTACCCAGATCAGAAA  
GAAAACACTCATTTCACTGTGCTGATTCATGAGTTAGCAGAAGCCTTTCAGAAGGACTTCACAAAATCCA  
CCAAGGAAAGGCTTCTTGGACTGTGGCGTATCTGCAGGGAGGCAATGATTGATAACAGCTATCAAGT  
TGAGAACTGGCAAAAGATCTGGATTCATCAACCTCCTGTCTTTGACTTCCATGGGTCTTGGGAAAAG  
CCCCTTACTACTGGCCACAACAGCCCTCTGAGCAAGGGGTGGCAGGACAGAGGGCCAAGCTCCTACTACA  
ATGTGGAATATGCTGTGGGTACTGGATACATAAGGGAATGCCATCAGAGAAGGTGGTATGGGCATCCC  
CACATATGGGCACTCCTTCACTGGCCCTCTGCAGAAACCACCGTGGGGGCCCTGCCTCTGGCCCTGGA  
GCTGTGGACCCATCACAGAGTCTCAGGCTTCTGGCCTATTATGAGATCTGCCAGTTCTGAAAGGAG  
CCAAGATCAGCGGCTCCAGGATCAGCAGGTTCCCTACGCAAGTCAAGGGGAACCAAGTGGGTGGGCTATGA  
TGATGTGAAGAGTATGGAGACCAAGGTTCAAGTCTTAAAGAATTTAAACCTGGGAGGAGCCATGATCTGG  
TCTATTGACATGGATGACTTCACTGGCAAATCCTGCAACCAGGGCCCTTACCCTCTTGTCCAAGCAGTCA  
AGAGAAGCCTGGCTCCCTG

**ACGCGT**ACGCGGCCGCTCGAGCAGAAACTCATCTCAGAAGAGGATCTGGCAGCAAATGATATCCTGGATT  
ACAAGGATGACGACGATAAGGTTTAA



[View online >](#)



**Reconstitution Method:**

1. Centrifuge at 5,000xg for 5min.
2. Carefully open the tube and add 100ul of sterile water to dissolve the DNA.
3. Close the tube and incubate for 10 minutes at room temperature.
4. Briefly vortex the tube and then do a quick spin (less than 5000xg) to concentrate the liquid at the bottom.
5. Store the suspended plasmid at -20°C. The DNA is stable for at least one year from date of shipping when stored at -20°C.

**RefSeq:** [NM\\_001025197.1](#), [NP\\_001020368.1](#)

**RefSeq Size:** 1456 bp

**RefSeq ORF:** 1143 bp

**Locus ID:** 1117

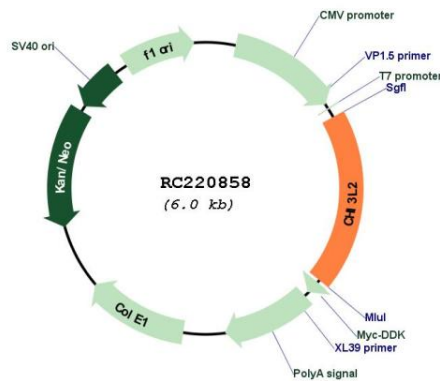
**UniProt ID:** [Q15782](#)

**Cytogenetics:** 1p13.2

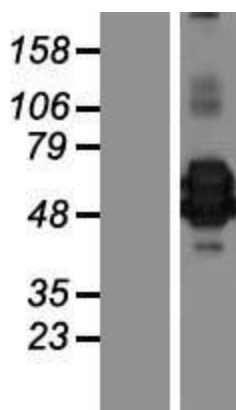
**MW:** 42.3 kDa

**Gene Summary:** The protein encoded by this gene is similar to bacterial chitinases but lacks chitinase activity. The encoded protein is secreted and is involved in cartilage biogenesis. Several transcript variants encoding different isoforms have been found for this gene. [provided by RefSeq, Apr 2012]

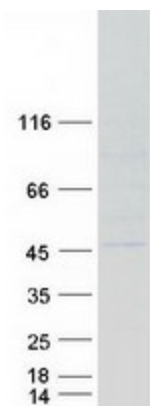
### Product images:



Circular map for RC220858



Western blot validation of overexpression lysate (Cat# [LY422601]) using anti-DDK antibody (Cat# [TA50011-100]). Left: Cell lysates from untransfected HEK293T cells; Right: Cell lysates from HEK293T cells transfected with RC220858 using transfection reagent MegaTran 2.0 (Cat# [TT210002]).



Coomassie blue staining of purified CHI3L2 protein (Cat# [TP320858]). The protein was produced from HEK293T cells transfected with CHI3L2 cDNA clone (Cat# RC220858) using MegaTran 2.0 (Cat# [TT210002]).