

Product datasheet for **RC220849**

SLCO1A2 (NM_021094) Human Tagged ORF Clone

Product data:

Product Type:	Expression Plasmids
Product Name:	SLCO1A2 (NM_021094) Human Tagged ORF Clone
Tag:	Myc-DDK
Symbol:	SLCO1A2
Synonyms:	OATP; OATP-A; OATP1A2; SLC21A3
Mammalian Cell Selection:	Neomycin
Vector:	pCMV6-Entry (PS100001)
E. coli Selection:	Kanamycin (25 ug/mL)



[View online »](#)

ORF Nucleotide Sequence:

>RC220849 representing NM_021094
 Red=Cloning site Blue=ORF Green=Tags(s)

TTTTGTAATACGACTCACTATAGGGCGGCCGGAATTCGTCGACTGGATCCGGTACCGAGGAGATCTGCC
 GCC**CGCATCGCC**

ATGGGAGAACTGAGAAAAGAATTGAAACCCATAGAATAAGATGTCTTTCCAAGTTGAAGATGTTTCTGT
 TGGCAATAACATGTGCATTTGTATCCAAAACACTGTCTGGATCTTATATGAATTCATGCTCACACAAAT
 AGAGAGACAATCAACATCCCAACATCTCTAGTTGGATCATAATGGAAGCTTTGAGATTGGAAATCTT
 TTGTTGATTATTTGTGAGTTATTTTGAACCAAACACTGCATAGACCTATAATGATTGGCATTGGATGTG
 TGGTTATGGGCTTAGGCTGTTTCTTAAATCACTACCTCATTTCCTCATGAACCAATATGAATATGAATC
 TACAGTTTCAGTTTCAGGCAACTGTCTCAAACAGTTTCTTGTGTATGGAAAATGGAACCCAGATTTTA
 AGACCAACGCAGGATCCATCAGAGTGTACAAAGGAAGTTAAATCATAATGTGGGTGTACGCTCTAGTAG
 GCAATATTGTACGTGGAATGGGTGAAACTCCCATCCTGCCTTTGGGTATTTCTATATAGAAGATTTTGC
 CAAATTTGAAAATTCCTTTTATATATTGGGCTGTAGAAACAGGAGCTATTATTGGTCTTTGATCGGA
 CTTTTGTTGGCATTCTGTGCAAATGTTTATGTTGACACTGGATTTGTGAACACAGATGATCTGATCA
 TAACTCCCACTGACACTCGTTGGGTGCGTGCATGGTGGTTTGGCTTTCTGATTTGTGAGGATTAACGT
 GCTCACTGCCATTCCTTTTTCTTTTTGCCCAACACACTTCCAAAGGAAGGACTAGAGACTAATGCTGAC
 ATCATAAAAAATGAAAATGAAGACAAAACAAAAGAAGAGGTCAAGAAGGAAAAATATGGAATCACTAAAG
 ATTTTCTACCTTTCATGAAAAGTCTTTCCTGCAATCCAATTTATATGCTTTTCATACTTGTAAAGTGTGAT
 ACAGTTCAATGCATTCGTTAACATGATCCTTCATGCCTAAATACCTAGAACAGCAATATGGAATATCA
 TCTTCAGATGCAATCTTCTAATGGGTATTTATAACTTACCTCCAATATGTATTGGATATATAATTGGTG
 GTTTAATTATGAAGAAGTCAAGATTACTGTCAAACAAGCTGCCACATAGGATGTTGGTTATCCTTACT
 TGAGTATCTTCTATTTTTTATCTTTTCTCATGACTTGTGAAAATTCCTCAGTTGTTGGAATAAATACC
 TCTTATGAAGGAATCCACAAGATTTATATGTGAAAATGACATCTTTGCTGATTGCAATGTGGATTGCA
 ACTGTCCATCTAAAATATGGGATCCTGTGTGTGAAAACAATGGCTTGTCTATCTGTGAGCTTGTCTTGC
 TGGTTGTGAGACATCCATTGGAACGGGAATAAACATGGTGTTCAAAATTCAGCTGATTCAAACATCA
 GGAAATTCATCTGCAGTTCTTGGGCTGTGCGACAAAGGACCTGACTGTTCCCTTGATGCTCCAGTACTTCC
 TAATCTTGTGAGGATGAGCAGTTTCATTTATTCTTTGGCTGCCATACCTGGATATATGGTTCTCTTGAG
 GTGTATGAAATCTGAAGAGAAGTCCCTTGGTGTGGGATTACATACATTTTGCACAAGAGTATTTGCTGGC
 ATTCCTGCACCTATATATTTGGCGCTTAAATGGATTCCACATGTTTACACTGGGAACTTTGAAATGTG
 GTGAGTCAGGGGATGCAGGATATATGATTCCACCACCTTCAGATACATCTACCTCGGATTGCCCGCAGC
 ACTAAGAGGATCAAGCTTTGTTCCAGCCTTAATCATCTTAATTCTTTTGGGAAGTGTCTACCTGGT
 GAAAATGCCTCTTCAGGAACAGAGCTTATAGAGACAAAAGTCAAAGGGAAGGAAAATGAGTGCAAAGATA
 TATACAAAAGTCCACGGTTTTGAAAGATGATGAATTGAAAACATAAATTG

ACGCGTACGCGGCCGCTCGAGCAGAACTCATCTCAGAAGAGGATCTGGCAGCAATGATATCCTGGATT
 ACAAGGATGACGACGATAAGGTTTAA

Protein Sequence: >RC220849 representing NM_021094
Red=Cloning site Green=Tags(s)

```
MGETEKRIETHRIRCLSKLKMFLLAITCAFVSKTLSGSYMNMSMLTQIERQFNIPSTLVGFINGSFEIGNL
LLIIFVSYFGTKLHRPIMIGIGCVVMGLGCFLKSLPHFLMNQYEYESTVSVSGNLSNSFLCMENGTQIL
RPTQDPSECTKEVKSLMWVYVLVGNIVRGMGETPILPLGISYIEDFAKFENSPLYIGLVETGAIIGPLIG
LLLASF CANVYVDTGFVNTDDLIIPTDTRWVGAWWFGFLICAGVNVLT AIPFFLPNTLPKEGLETNAD
I IKNENEDKQKEEVKKEKYGITKDFLPFMKSLSCNPIYMLF ILVSVIQFNAFVNMFMPKYLEQQYGIS
SSDAIFLMGIYNLPPICIGYIIGGLIMKKFKITVKQAAHIGCWL SLELYLLYFLSFLMTCENSSVVGINT
SYEGIPQDLYVENDIFADCNVDCNCPSKIWDPVCGNGLSYLSACLAGCETSIGTGINMVFQNCSCIQTS
GNSSAVLGLCDKGPDCSLMLQYFLILSAMSSFIYSLAAIPGYMVLLRCMKSEEKSLGVLHTFCTRVFAG
IPAPIYF GALMDSTCLHWGTLKCGESGACRIYDSTTFRYIYLG LPAALRGSSFPALIIILLRKCHLPG
ENASSGTELIETKVKGKENECKDIYQKSTVLKDDDELKTKL
```

TRTRPLEQKLISEEDLAANDILDYKDDDDKV

Chromatograms: https://cdn.origene.com/chromatograms/mg2697_d05.zip

Restriction Sites: SgfI-MluI

Cloning Scheme:



ACCN: NM_021094

ORF Size: 2010 bp

OTI Disclaimer: The molecular sequence of this clone aligns with the gene accession number as a point of reference only. However, individual transcript sequences of the same gene can differ through naturally occurring variations (e.g. polymorphisms), each with its own valid existence. This clone is substantially in agreement with the reference, but a complete review of all prevailing variants is recommended prior to use. [More info](#)

OTI Annotation: This clone was engineered to express the complete ORF with an expression tag. Expression varies depending on the nature of the gene.

Components: The ORF clone is ion-exchange column purified and shipped in a 2D barcoded Matrix tube containing 10ug of transfection-ready, dried plasmid DNA (reconstitute with 100 ul of water).

Reconstitution Method:

1. Centrifuge at 5,000xg for 5min.
2. Carefully open the tube and add 100ul of sterile water to dissolve the DNA.
3. Close the tube and incubate for 10 minutes at room temperature.
4. Briefly vortex the tube and then do a quick spin (less than 5000xg) to concentrate the liquid at the bottom.
5. Store the suspended plasmid at -20°C. The DNA is stable for at least one year from date of shipping when stored at -20°C.

RefSeq: [NM_021094.4](#)

RefSeq Size: 2919 bp

RefSeq ORF: 2013 bp

Locus ID: 6579

UniProt ID: [P46721](#)

Cytogenetics: 12p12.1

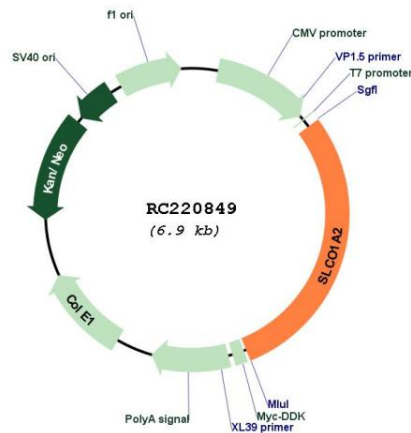
Domains: OATP_N, OATP_C

Protein Families: Transmembrane

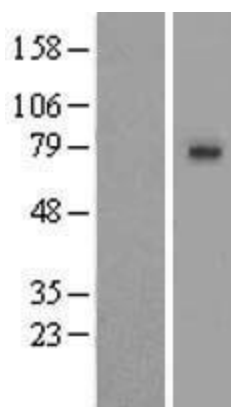
MW: 74 kDa

Gene Summary: This gene encodes a sodium-independent transporter which mediates cellular uptake of organic ions in the liver. Its substrates include bile acids, bromosulphophthalein, and some steroidal compounds. The protein is a member of the SLC21A family of solute carriers. Alternative splicing of this gene results in multiple transcript variants. [provided by RefSeq, Dec 2008]

Product images:



Circular map for RC220849



Western blot validation of overexpression lysate (Cat# [LY402830]) using anti-DDK antibody (Cat# [TA50011-100]). Left: Cell lysates from untransfected HEK293T cells; Right: Cell lysates from HEK293T cells transfected with RC220849 using transfection reagent MegaTran 2.0 (Cat# [TT210002]).