

Product datasheet for **RC220843**

FAM110C (NM_001077710) Human Tagged ORF Clone

Product data:

Product Type:	Expression Plasmids
Product Name:	FAM110C (NM_001077710) Human Tagged ORF Clone
Tag:	Myc-DDK
Symbol:	FAM110C
Mammalian Cell Selection:	Neomycin
Vector:	pCMV6-Entry (PS100001)
E. coli Selection:	Kanamycin (25 ug/mL)
ORF Nucleotide Sequence:	>RC220843 representing NM_001077710 Red=Cloning site Blue=ORF Green=Tags(s)

TTTTGTAATACGACTCACTATAGGGCGGCCGGAATTCGTCGACTGGATCCGGTACCGAGGAGATCTGCC
GCC**CGATCGCC**

ATGCGCGCCCTGGCGGCCCTGAGCGCGCCCCGAACGAGCGGCTCCTTCCCCGGGACCCCGCGGCTACCC
GGGACCCCGACGCCGCGCGGCCGCGCGCAGGAGCGCAGTGGAGAGGCTGGCGCGGATCGCGCCAAGTA
TGTGCGGGGTGGCGGGGACTGGCCGGGGCGTCGCTCCGAGGGCAGCGGCCCGGGGGCGATCAAGTGC
CCGGGGAACGACCCTGGGCCCGCGCCCGCCCGCCCGGTCGGCGCGCAGGGCTATTGCGCGGAAGC
CGTTGAGACCGGACTCGCTGATCATCTACCGGCAGAAATGCGAATTCGTGCGAGGATCGGGCGCCGACCG
CCCCAGGCAAGCCTGGTGAAGAAGCTCTCCAGGGGCCGGTAAGGACAAGCGCGCGGTGCCCGGACG
GGAGACGAGGGCAAGGCCGGGAACCCGGAGACGGTCCCGACCACTCCTGGCCCCGCGCGGACCCCGCAA
TCCCCGAGACCCAGCCCGAGCCGCGGGTCCGCGGCGCCCTCCAGTGTCCCGGCGCGCCCTGGGCC
AGAGCCGCGGGTGGTGGGCGTGGGGGCTGCAGCGCTCACAGTCGGACCTCAGTCCCCTATTCCGCT
GCCTTGGCCGAGTCTGACACCTTCTCCAGTACTGCGGCCTGGACCCGAGGTGGTGGAGGCCCTGGGGA
GGGAGAATTACCGCGGGTGGACTGTGTACCCTCAAGGTGCGCAGCGTGAGCGTCCACCTCCGG
CAGCGGCTTCTCCGGCACAGCGCGGCGACGACGAGGGGCTGCAGGAGGAGGAGCTGATAGACAGGTG
CCCAGCACCACTTCGGTCATCGAGAGGAACGCCCGCATCATCAAGTGGCTGTACACTGTAAGAAGGCCA
AGGAGACCCCGAGCAGGAGCAGAGCCGACCCGAGGAAGCAAACCTTCCCGA

ACGCGTACGCGGCCGCTCGAGCAGAAACTCATCTCAGAAGAGGATCTGGCAGCAAATGATATCCTGGATT
ACAAGGATGACGACGATAAGGTTTAA



[View online »](#)

Protein Sequence: >RC220843 representing NM_001077710
Red=Cloning site Green=Tags(s)

MRALAALSAPPNERLLPRDPAATRPDAARPARRSAVERLAADRKYVGRPGTGRGVASEGSGPGAIKC
 PGNDPGPPARAPAVARRAIARKPLRPDSLIIYRQKCEFVRGSGADGPRASLVKKLFQGGPKDKAPVVRT
 GDEGKAGNPETVPTTPGPAADPAIPETPAPAARSAAPSSVPAAPPGPEPRVRRRGLQRSQSDLSSRYSA
 ALAESDTFFQYCGLDPEVVEALGRENFTAGSDCVTLKVRVSVVATSGSGFSRHSGGDDEGLQEEELIEQV
 PSTTSVIERNARIKWLYTCKKAKETPSQEQRTRGSKPSR

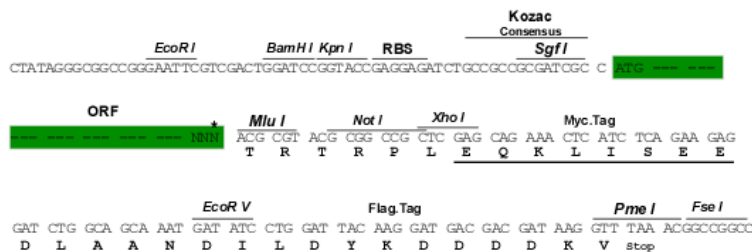
TRTRPLEQKLISEEDLAANDILDYKDDDDKV

Chromatograms: https://cdn.origene.com/chromatograms/mk8041_d06.zip

Restriction Sites: SgfI-MluI

Cloning Scheme:

Cloning sites used for ORF Shuttling:



* The last codon before the Stop codon of the ORF

ACCN: NM_001077710

ORF Size: 963 bp

OTI Disclaimer: The molecular sequence of this clone aligns with the gene accession number as a point of reference only. However, individual transcript sequences of the same gene can differ through naturally occurring variations (e.g. polymorphisms), each with its own valid existence. This clone is substantially in agreement with the reference, but a complete review of all prevailing variants is recommended prior to use. [More info](#)

OTI Annotation: This clone was engineered to express the complete ORF with an expression tag. Expression varies depending on the nature of the gene.

Components: The ORF clone is ion-exchange column purified and shipped in a 2D barcoded Matrix tube containing 10ug of transfection-ready, dried plasmid DNA (reconstitute with 100 ul of water).

Reconstitution Method:

1. Centrifuge at 5,000xg for 5min.
2. Carefully open the tube and add 100ul of sterile water to dissolve the DNA.
3. Close the tube and incubate for 10 minutes at room temperature.
4. Briefly vortex the tube and then do a quick spin (less than 5000xg) to concentrate the liquid at the bottom.
5. Store the suspended plasmid at -20°C. The DNA is stable for at least one year from date of shipping when stored at -20°C.

RefSeq: [NM_001077710.3](#)

RefSeq Size: 966 bp

RefSeq ORF: 966 bp

Locus ID: 642273

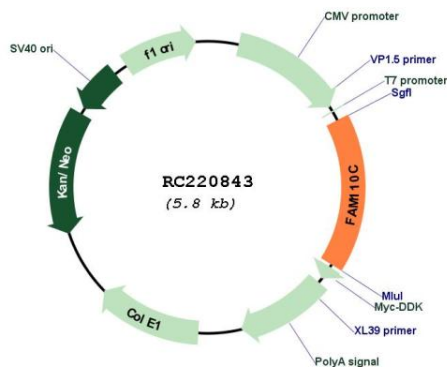
UniProt ID: [Q1W6H9](#)

Cytogenetics: 2p25.3

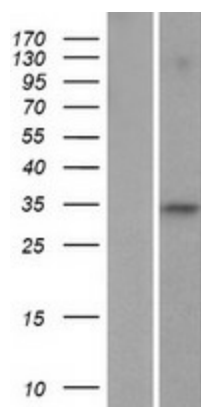
MW: 33.7 kDa

Gene Summary: May play a role in microtubule organization. May play a role in cell spreading and cell migration of epithelial cells; the function may involve the AKT1 signaling pathway. [UniProtKB/Swiss-Prot Function]

Product images:



Circular map for RC220843



Western blot validation of overexpression lysate (Cat# [LY421489]) using anti-DDK antibody (Cat# [TA50011-100]). Left: Cell lysates from untransfected HEK293T cells; Right: Cell lysates from HEK293T cells transfected with RC220843 using transfection reagent MegaTran 2.0 (Cat# [TT210002]).