

Product datasheet for **RC220829**

USP16 (NM_001032410) Human Tagged ORF Clone

Product data:

Product Type:	Expression Plasmids
Product Name:	USP16 (NM_001032410) Human Tagged ORF Clone
Tag:	Myc-DDK
Symbol:	USP16
Synonyms:	UBP-M; UBPM
Mammalian Cell Selection:	Neomycin
Vector:	pCMV6-Entry (PS100001)
E. coli Selection:	Kanamycin (25 ug/mL)



[View online »](#)

Protein Sequence: >RC220829 protein sequence
Red=Cloning site Green=Tags(s)

MGKKRTKGKTVPIDDSSSETLEPVCRRHIRKGLEQGNLKKALVNVEWNICQDCKTDNKVKDKAEETEETEEKPS
VWLCLKCGHQGCGRNSQEQHALKHYLTPRSEPHCLVLSLDNWSVWCYVCDNEVQYCSSNQLGQVVDYVRK
HASITTPKPEKDNGNIELENKLEKESKNEQEREKKNMAKENPPMNSPCQITVKGLSNLGNTCFFNAVM
QNLSTPVLRELLKEVKMSGTIVKIEPPDLALTEPLEINLEPPGPLTLAMSQFLNEMQETKKGVVTPKEL
FSQVCKKAVRFKGYQQDSQELLRYLLDGMRAEEHQRVSKGILKAFGNSTEKLDEELKNKVKDYEEKKSM
PSFVDRIFGGELTSMIMCDQCRTVSLVHESFLDLSLPVLDQSGKKS VNDKNLKKTVEDEDQDSEEEKDN
DSYIKERSDIPSGTSKHLQKKAKKQAKKQAKNQRQKIQGKVLHLNDICTIDHPEDSDNEAEMSLQGEV
NIKSNHISQEGVMHKEYCVNQDLNGQAKMIESVTDNQKSTEEVDMKNINMDNDLEVL TSSPTRNLNGAY
LTEGSNGEVDISNGFKNLNLNAALHPDEINIEILNDSHTPGTKVYEVVNEDEPETAFACTLANREVFNTDEC
SIQHCLYQFTRNEKLRDANKLLCEVCTRRQCNGPKANIKGERKHVYTNAKKQMLISLAPPVLT LHLKRFQ
QAGFNLRKVNKHIKFPEILDLPFCTLCKNVAEENTRVLYSLYGVVEHSGTMRSGHYTA YAKARTANSH
LSNLVLHGDI PQDFEMESKGQWFHISDTHVQAVPTTKVLNSQAYLLFYERIL

TRTRPLEQKLISEEDLAANDILDYKDDDDKV

Chromatograms: https://cdn.origene.com/chromatograms/mk6280_g02.zip

Restriction Sites: Sgfl-Mlul

Reconstitution Method:

1. Centrifuge at 5,000xg for 5min.
2. Carefully open the tube and add 100ul of sterile water to dissolve the DNA.
3. Close the tube and incubate for 10 minutes at room temperature.
4. Briefly vortex the tube and then do a quick spin (less than 5000xg) to concentrate the liquid at the bottom.
5. Store the suspended plasmid at -20°C. The DNA is stable for at least one year from date of shipping when stored at -20°C.

RefSeq: [NM_001032410.1](#), [NP_001027582.1](#)

RefSeq Size: 3052 bp

RefSeq ORF: 2472 bp

Locus ID: 10600

UniProt ID: [Q9Y5T5](#)

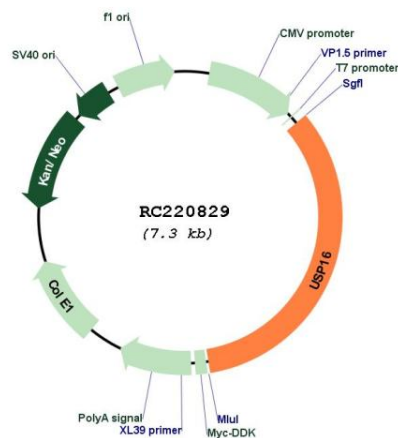
Cytogenetics: 21q21.3

Protein Families: Protease

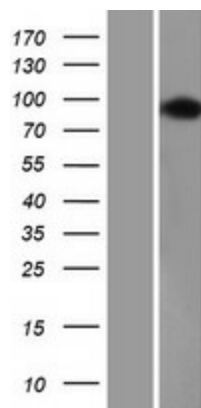
MW: 93.4 kDa

Gene Summary: This gene encodes a deubiquitinating enzyme that is phosphorylated at the onset of mitosis and then dephosphorylated at the metaphase/anaphase transition. It can deubiquitinate H2A, one of two major ubiquitinated proteins of chromatin, in vitro and a mutant form of the protein was shown to block cell division. Alternate transcriptional splice variants, encoding different isoforms, have been characterized. [provided by RefSeq, Jul 2008]

Product images:



Circular map for RC220829



Western blot validation of overexpression lysate (Cat# [LY416633]) using anti-DDK antibody (Cat# [TA50011-100]). Left: Cell lysates from untransfected HEK293T cells; Right: Cell lysates from HEK293T cells transfected with [RC222609] using transfection reagent MegaTran 2.0 (Cat# [TT210002]).