

Product datasheet for RC220826L3

AGBL1 (NM_152336) Human Tagged Lenti ORF Clone

Product data:

Product Type:	Expression Plasmids
Product Name:	AGBL1 (NM_152336) Human Tagged Lenti ORF Clone
Tag:	Myc-DDK
Symbol:	AGBL1
Synonyms:	CCP4; FECD8
Mammalian Cell Selection:	Puromycin
Vector:	pLenti-C-Myc-DDK-P2A-Puro (PS100092)
E. coli Selection:	Chloramphenicol (34 ug/mL)
ORF Nucleotide Sequence:	The ORF insert of this clone is exactly the same as(RC220826).
Restriction Sites:	SgfI-MluI
Cloning Scheme:	

Cloning sites used for ORF Shuttling:



* The last codon before the Stop codon of the ORF.

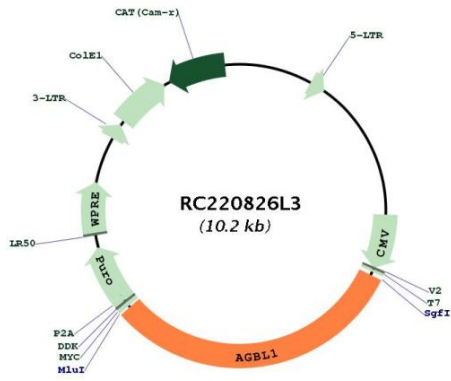
ACCN:	NM_152336
ORF Size:	3198 bp



[View online »](#)

OTI Disclaimer:	The molecular sequence of this clone aligns with the gene accession number as a point of reference only. However, individual transcript sequences of the same gene can differ through naturally occurring variations (e.g. polymorphisms), each with its own valid existence. This clone is substantially in agreement with the reference, but a complete review of all prevailing variants is recommended prior to use. More info
OTI Annotation:	This clone was engineered to express the complete ORF with an expression tag. Expression varies depending on the nature of the gene.
Components:	The ORF clone is ion-exchange column purified and shipped in a 2D barcoded Matrix tube containing 10ug of transfection-ready, dried plasmid DNA (reconstitute with 100 ul of water).
Reconstitution Method:	<ol style="list-style-type: none">1. Centrifuge at 5,000xg for 5min.2. Carefully open the tube and add 100ul of sterile water to dissolve the DNA.3. Close the tube and incubate for 10 minutes at room temperature.4. Briefly vortex the tube and then do a quick spin (less than 5000xg) to concentrate the liquid at the bottom.5. Store the suspended plasmid at -20°C. The DNA is stable for at least one year from date of shipping when stored at -20°C.
RefSeq:	NM_152336.2 , NP_689549.2
RefSeq Size:	3493 bp
RefSeq ORF:	3339 bp
Locus ID:	123624
UniProt ID:	Q96MI9
Cytogenetics:	15q25.3
MW:	120.1 kDa
Gene Summary:	Polyglutamylation is a reversible posttranslational modification catalyzed by polyglutamylases that results in the addition of glutamate side chains on the modified protein. This gene encodes a glutamate decarboxylase that catalyzes the deglutamylation of polyglutamylated proteins. Mutations in this gene result in dominant late-onset Fuchs corneal dystrophy. [provided by RefSeq, Nov 2013]

Product images:



Circular map for RC220826L3