

Product datasheet for **RC220818**

SEC14L5 (NM_014692) Human Tagged ORF Clone

Product data:

Product Type:	Expression Plasmids
Product Name:	SEC14L5 (NM_014692) Human Tagged ORF Clone
Tag:	Myc-DDK
Symbol:	SEC14L5
Synonyms:	PRELID4B
Mammalian Cell Selection:	Neomycin
Vector:	pCMV6-Entry (PS100001)
E. coli Selection:	Kanamycin (25 ug/mL)



[View online »](#)

**ORF Nucleotide
Sequence:**

>RC220818 representing NM_014692
 Red=Cloning site Blue=ORF Green=Tags(s)

TTTTGTAATACGACTCACTATAGGGCGGCCGGAATTCGTCGACTGGATCCGGTACCGAGGAGATCTGCC
 GCC**CGGATCGCC**

ATGGTGCAAAGATACCAGTCTCCTGTCCGAGTCTACAAGTACCCGTTTGAGCTGGTCATGGCGCCCTACG
 AGAAGCGTTTCCCACGTGCCACAGATCCCAGTCTTCTGGGCAGCGAGGTCTTGCGCGAGTCCCGCAG
 CCCGGACGGGGCTGTGCACGTGGTGGAGCGGAGCTGCCGGCTGCGCGTGGACGCCCGCGGCTGCTGCGG
 AAGATCGCAGGTGTTGAGCACGTGGTCTTCGTGCAGACAAACATCTTGAAGTGGAAAGGAGAGGACGCTCC
 TCATCGAAGCGCACAAATGAGACCTTCGCCAACCGGTGGTGGTGAACGAGCACTGCAGCTACACGGTCCA
 CCCTGAGAATGAAGACTGGACTTGCTTCGAGCAGTCTGCCTCACTGGACATTTCGGTCTTTCTTTGGCTTT
 GAAATGCCTGGAGAAGATCGCCATGAAGCAGTACACCGCAACGTCAAGAGGGGGAAGGAGGTGATTG
 AGCATTACCTGAATGAGCTCATCTCCAGGGTACCTCGCACATTCGCGCTGGACGCTGCCCCAGTCCG
 TGAGGAGGATGCCCGCAACCAGGCTGGACCGAGGGACCCAGCTCCCTGGAGGCCACGGCCCCGTAGC
 ACCCTGGGGCCCCCTCTGGAGGCGGTAGTATGGACGGGGACAAGCTGGATGCGGACTACATTGAGAGGT
 GCCTGGGCCACCTCACGCCATGCAGGAGAGCTGCCTGATCCAGCTTCGGCACTGGTTACAGGAGACCCA
 CAAAGGCAAGATCCCAAAGATGAGCACATCCTTCGGTTCCTGCGGGCTCATGACTTCCACCTGGACAAG
 GCCCGGAAATGCTGCGCAGTCTTGAGCTGGCGCAAGCAGCACCAGGTGGATCTCCTCCTCAGACCT
 GGCAACCCCTGCCCTGCTGGAGGAGTTCTATGCAAGGGGCTGGCATTACCAGGACATAGATGGCCGCC
 CCTCTACATCCTCCGCTGGGCCAGATGGACACAAAGGCTTGATGAAGGCCGTGGGGGAGGAGGCGCTG
 CTGCGGCATGTTCTCCTGCAACGAGGAAGGACAGAAGCGGTGTGAGGGGAGCACAAAGGAGCTGGGCC
 GTCCCATCAGCTCCTGGACCTGCCTGCTAGACCTGGAGGACTCAACATGCGGCACCTGTGGCGCCGGG
 GGTGAAGGCCCTGCTGCGGATGATTGAGGTGGTTGAGGACAATTACCCAGAGACCCTGGGTCGGCTGCTC
 ATCGTGCGAGCCCCGAGTCTTCCCCGTGCTCTGGACACTGATCAGCCCCCTCATCAATGAGAACCCA
 GGCGGAAGTTCCTCATCTACAGTGGCAGCAACTACCAGGGACCCGGAGGCCTTGTGGACTATCTGGATAG
 AGAAGTGATCCCTGACTTCTTGGGGGAGAGAGTGTGTAAATGTCCCCGAAGGAGGGCTGGTCCCCAAG
 TCCCTCTACATGACAGAAGAGGAGCAGGAGCACACGGACCAGCTGTGGCAGTGGAGTGGACCTACCATT
 CAGCCAGCGTGTCCGCGGAGCCCCCACGAGGTGGCCGTGGAGATCCTGGAAGGAGAGTCCGTCATCAC
 CTGGGACTTTGACATCCTGCGAGGGGACGTGGTGTTCAGCCTGTACCACCAAGCAGGCGCCAGGCTG
 GCGCCCCGGAACCGGGACCAGGGCCAGCGGCAGCTGATCGACAAAGGCTGGGTCTGGGCAGGGATT
 ACAGCCGTGTGGAGGCTCCCTTGTCTGCGGGGAGGGGAGAGCATCCAGGGCTCCCATGTGACCCGGTG
 GCCCGGCTGTACCTGCTCCAGTGGCAAATGCACAGCCCCCAGCAGCGTGGCCTGCAGCTCCCGGGT
 GTGGACGATGTCTGACGGCTCTGCACAGCCCCGGGCCAAAGTGCAAATCTCTACTACTGTGAGGTGC
 TCGCCTCTGAGGACTTACGGGGCTCCATGTCCAGCCTGGAATCCTGCACCAGCGGCTTCTCCAGCTCAG
 CGCCGCCACCTCGTCTCCTCCTCCGGCCAGTCTCATAGCAGCTCCCTGGTCTCCAGA

ACGCGTACGCGGGCGCTCGAGCAGAACTCATCTCAGAAGAGGATCTGGCAGCAAATGATATCCTGGATT
 ACAAGGATGACGACGATAAGGTTTAA

Protein Sequence: >RC220818 representing NM_014692
Red=Cloning site Green=Tags(s)

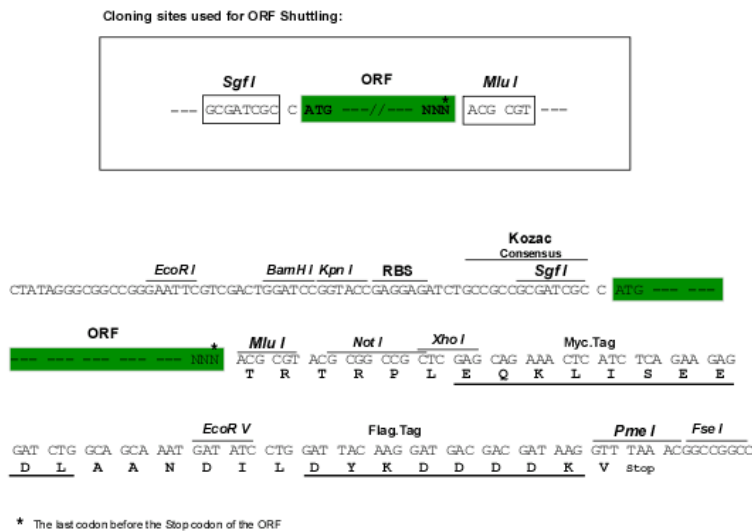
MVQRYQSPVRVYKYPFELVMAAYEKRFPTCPQIPVFLGSEVLRESRSPDGAHVHVERSCRLRVDAPRLLR
 KIAGVEHVVFVQTNILNWKERTLLIEAHNETFANRVVVNEHCSYTVHPENEDWTCFEQSASLDIRSFFGF
 ENALEKIAMKQYANVKRGEVIEHYLNELISQGTSHIPRWTPAPVREEDARNQAGPRDPSLEAHGPRS
 TLGPALAVSMDGDKLDADYIERCLGHLTPMQESCLIQLRHWLQETHKGIKPKDEHILRFLRAHDFHLDK
 AREMLRQSLSWRKQHVDLLLQWQPPALLEEFYAGGWHYQDIDGRPLYILRLGQMDTKGLMKAVGEEAL
 LRHVLVNEEGQKRCEGSTRQLGRPISSWTCLLDLEGLNMRHLWRPGVKALLRMIEVVEDNYPETLGRLL
 IVRAPRVFVWLWTLISPFINENTRRKFLIYSGSNYQGGGLVDYLDREVIPDFLGGESVCNVPEGGLVPK
 SLYMTEEEQEHTDQLWQWSETYHSASVLRGAPHEVAVEILEGESVITWDFDILRGDVVFLYHTKQAPRL
 GAREPGTRASGQLIDKGWVLRDYSRVEAPLVCREGESIQQSHVTRWPGVYLLQWQMHSPPSSVACSLPG
 VDDVLTALHSPGPKCLLYYCEVLASEDFRGSMSLSLECTSGFSQLSAATSSSSSQSHSSSLVSR

TRTRPLEQKLISEEDLAANDILDYKDDDDKV

Chromatograms: https://cdn.origene.com/chromatograms/mk8041_f01.zip

Restriction Sites: SgfI-MluI

Cloning Scheme:



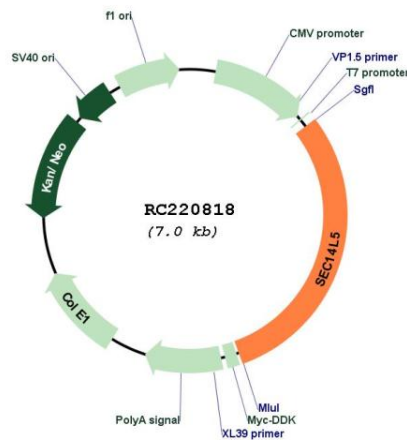
ACCN: NM_014692

ORF Size: 2088 bp

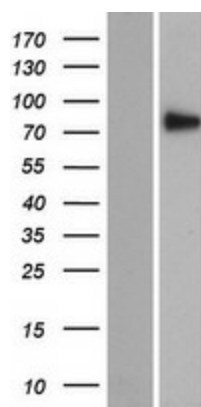
OTI Disclaimer: The molecular sequence of this clone aligns with the gene accession number as a point of reference only. However, individual transcript sequences of the same gene can differ through naturally occurring variations (e.g. polymorphisms), each with its own valid existence. This clone is substantially in agreement with the reference, but a complete review of all prevailing variants is recommended prior to use. [More info](#)

OTI Annotation: This clone was engineered to express the complete ORF with an expression tag. Expression varies depending on the nature of the gene.

Components:	The ORF clone is ion-exchange column purified and shipped in a 2D barcoded Matrix tube containing 10ug of transfection-ready, dried plasmid DNA (reconstitute with 100 ul of water).
Reconstitution Method:	<ol style="list-style-type: none"> 1. Centrifuge at 5,000xg for 5min. 2. Carefully open the tube and add 100ul of sterile water to dissolve the DNA. 3. Close the tube and incubate for 10 minutes at room temperature. 4. Briefly vortex the tube and then do a quick spin (less than 5000xg) to concentrate the liquid at the bottom. 5. Store the suspended plasmid at -20°C. The DNA is stable for at least one year from date of shipping when stored at -20°C.
RefSeq:	<u>NM_014692.2</u>
RefSeq Size:	6456 bp
RefSeq ORF:	2091 bp
Locus ID:	9717
UniProt ID:	<u>O43304</u>
Cytogenetics:	16p13.3
MW:	78.8 kDa

Product images:


Circular map for RC220818



Western blot validation of overexpression lysate (Cat# [LY415109]) using anti-DDK antibody (Cat# [TA50011-100]). Left: Cell lysates from untransfected HEK293T cells; Right: Cell lysates from HEK293T cells transfected with RC220818 using transfection reagent MegaTran 2.0 (Cat# [TT210002]).