

## Product datasheet for **RC220816**

### TIFAB (NM\_001099221) Human Tagged ORF Clone

#### Product data:

**Product Type:** Expression Plasmids  
**Product Name:** TIFAB (NM\_001099221) Human Tagged ORF Clone  
**Tag:** Myc-DDK  
**Symbol:** TIFAB  
**Mammalian Cell Selection:** Neomycin  
**Vector:** pCMV6-Entry (PS100001)  
**E. coli Selection:** Kanamycin (25 ug/mL)  
**ORF Nucleotide Sequence:** >RC220816 representing NM\_001099221  
 Red=Cloning site Blue=ORF Green=Tags(s)

TTTTGTAATACGACTCACTATAGGGCGGCCGGAATTCGTCGACTGGATCCGGTACCGAGGAGATCTGCC  
 GCC**CGATCGCC**

ATGGAGAAGCCCCTACCGTCTCGAGTGAGCCTGTACCATCCCACGCTGGGCCATCTGCCTTTGCCA  
 ATGTCCCACCACGGTGCAGCATGATACAGCCCTCTGCTTCTCGGACGGGGCAGGACGCCACCTCCA  
 GCTGCAGCTCCCTCGCTCTCCCGCCGTACCTGTCCCTGGAGCCCTACCTGGAGAAAGGCAGTGCCTG  
 CTGGCCTTCTGCCTCAAGGCCCTGAGCCGCAAGGGCTGTGTGGGTCAATGGGCTGACGCTGAGGTACC  
 TGGACAGTCCCTGAGCACCCTCAACAGGGTCTCCTTCTCAGGCATCCAGATGCTGGTTCGCGTAGA  
 AGAAGGCACATCCCTGGAGGCTTTTGTCTGCTATTTCCATGTCAGCCCTCACCCCTGATTTACAGACCT  
 GAGGCTGAGGAACTGACGAATGGGAAGGCATCTCCAGGGCAGCCTCCCCCTGGTTCAGGG

**ACGCGT**ACGCGGCCGCTCGAGCAGAACTCATCTCAGAAGAGGATCTGGCAGCAATGATATCCTGGATT  
 ACAAGGATGACGACGATAAGGTTTAA

**Protein Sequence:** >RC220816 representing NM\_001099221  
 Red=Cloning site Green=Tags(s)

MEKPLTVLRVSLYHPTLGPFAFANVPPRLQHDTSPLLLGRGQDAHLQLPRLSRRHLSLEPYLEKGSAL  
 LAFCLKALSRKGCVWVNGLTRYLEQVPLSTVNRVSFSGIQMLVRVEEGTSLEAFVCYFHVSPSPLIYRP  
 EAEETDEWEGISQGPPPGSG

**TRTRPLEQKLI**SEEDLAANDILDYKDDDDKV

**Chromatograms:** [https://cdn.origene.com/chromatograms/mk8041\\_e01.zip](https://cdn.origene.com/chromatograms/mk8041_e01.zip)

**Restriction Sites:** SgfI-Mlul



[View online >](#)

**Cloning Scheme:**


**ACCN:** NM\_001099221

**ORF Size:** 483 bp

**OTI Disclaimer:** The molecular sequence of this clone aligns with the gene accession number as a point of reference only. However, individual transcript sequences of the same gene can differ through naturally occurring variations (e.g. polymorphisms), each with its own valid existence. This clone is substantially in agreement with the reference, but a complete review of all prevailing variants is recommended prior to use. [More info](#)

**OTI Annotation:** This clone was engineered to express the complete ORF with an expression tag. Expression varies depending on the nature of the gene.

**Components:** The ORF clone is ion-exchange column purified and shipped in a 2D barcoded Matrix tube containing 10ug of transfection-ready, dried plasmid DNA (reconstitute with 100 ul of water).

**Reconstitution Method:**

1. Centrifuge at 5,000xg for 5min.
2. Carefully open the tube and add 100ul of sterile water to dissolve the DNA.
3. Close the tube and incubate for 10 minutes at room temperature.
4. Briefly vortex the tube and then do a quick spin (less than 5000xg) to concentrate the liquid at the bottom.
5. Store the suspended plasmid at -20°C. The DNA is stable for at least one year from date of shipping when stored at -20°C.

**RefSeq:** [NM\\_001099221.2](#)

**RefSeq Size:** 1285 bp

**RefSeq ORF:** 486 bp

**Locus ID:** 497189

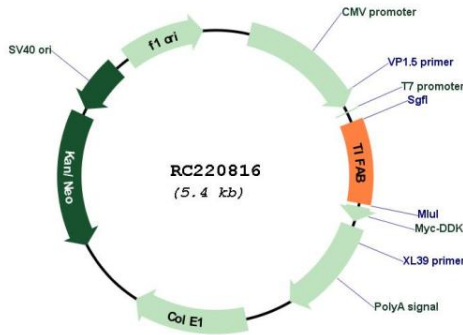
**UniProt ID:** [Q6ZNK6](#)

**Cytogenetics:** 5q31.1

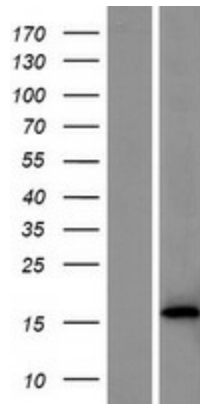
**MW:** 17.7 kDa

**Gene Summary:** TIFAB associates with TIFA (MIM 609028) and inhibits TIFA-mediated activation of NF-kappa-B (NFKB1; MIM 164011) (Matsumura et al., 2004 [PubMed 15047173]).[supplied by OMIM, Mar 2009]

**Product images:**



Circular map for RC220816



Western blot validation of overexpression lysate (Cat# [LY420371]) using anti-DDK antibody (Cat# [TA50011-100]). Left: Cell lysates from untransfected HEK293T cells; Right: Cell lysates from HEK293T cells transfected with RC220816 using transfection reagent MegaTran 2.0 (Cat# [TT210002]).