

Product datasheet for RC220812

SLC39A2 (NM_014579) Human Tagged ORF Clone

Product data:

Product Type:	Expression Plasmids
Tag:	Myc-DDK
Symbol:	SLC39A2
Synonyms:	6A1; ETI-1; ZIP-2; ZIP2
Mammalian Cell Selection:	Neomycin
Vector:	pCMV6-Entry (PS100001)
E. coli Selection:	Kanamycin (25 ug/mL)

ORF Nucleotide Sequence: >RC220812 representing NM_014579
Red=Cloning site Blue=ORF Green=Tags(s)

TTTTGTAATACGACTCACTATAGGGCGGCCGGGAATTCGTCGACTGGATCCGGTACCGAGGAGATCTGCC
GCCGCGATCGCC

ATGGAGCAACTACTAGGAATAAACTTGGCTGCCTGTTGCCCTGTTGGCTCTCACTCTGGGCTGTGGCC
TTACTCCCCTCTGCTTCAAATGGTTCCAGATTGATGCAGCCAGAGGTCATCACCGGCGAGTCCCTCAGACT
CCTGGGCTGTATTTCTGCTGGTGTTCCTGGGAGCAGGGTTCATGCATATGACTGCTGAAGCCCTGGAG
GAAATTGAATCAGATTTCAGAAAGTTCATGGTGCAGAACAGATCAGCAAGTGAAGAGAAATTCCTGGTG
ATGCTGATTCAGCTCATATGGAGTATCCCTATGGAGAGCTCATCATCTCCCTGGGCTTCTTTCTTGCTT
CTTTTTGGAGTCGCTGGCATTGCAAGTGTCTGCTGGGGCTGCTGGAGGATCGACAGTGCAGGACGAAGAA
TGGGGTGGGGCTCATATCTTGAAGTCCAGCCATGGACATTTACCCCTCACCCCTCAAAGGGTCCCTCC
GAGCCCTTGCTCTTGTCTGCTCACTCTCCTTTCACTCAGTGTGGAAGGGCTAGCTGTGGGGCTGCAGCC
GACAGTAGCAGCTACCGTGCAGCTCTGCCTTGCTGCTGGCTCATAAGGGGCTTGTGGTGTGGTGTGA
GGAATGCGGCTAGTGCATTTAGGTACCAGCTCACGATGGGCAGTGTCTCCATACTATTATTAGCTCTCA
TGTCCCCCTGGGCTAGCCGTAGGGCTGGCTGTGACTGGAGGGGACTCTGAAGGAGGGCGGGGCTTAGC
CCAGGCTGTGTTAGAGGGTGTGGCAGCTGGTACCTTCTGTATGTACCTTCTAGAAATTCCTCCACGG
GAGCTAGCTAGTCTGAGGCCCTCTAGCTAAGTGGAGCTGTGAGCCGCTGGTTTTGCCCTCATGGCCT
TTATTGCCCTGTGGGCC

ACGCGTACGCGGCCGCTCGAGCAGAACTCATCTCAGAAGAGGATCTGGCAGCAAATGATATCTGGATT
ACAAGGATGACGACGATAAGGTTTAA



Protein Sequence: >RC220812 representing NM_014579
Red=Cloning site Green=Tags(s)

MEQLLGIKLGCLFALLALTLGCGLTPICFKWFQIDAARGHRRVLRLLGCISAGVFLGAGFMHMTAEALE
 EIESQIQKFMVQNRASERNSSGDADSAHMEYPYGELIISLGFLLVFFLESALQCCPGAAGGSTVQDEE
 WGGAHIFELHSHGHLPSPSKGPLRALVLLLSLFSHVFEGGLAVGLQPTVAATVQLCLAVLAHKGLVVFVGV
 GMRLVHLGTSRWAVFSILLALLMSPLGLAVGLAVTGGDSEGGRLAQAVLEGVAAGTFLVYTFLEILPR
 ELASPEAPLAKWSCVAAGFAFMAFIALWA

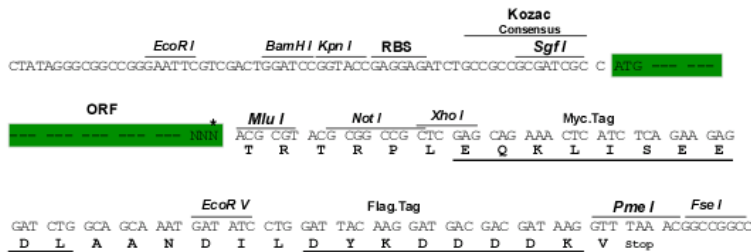
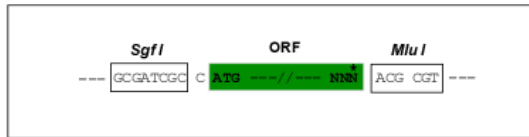
TRTRPLEQKLI SEEDLAANDILDYKDDDDKV

Chromatograms: https://cdn.origene.com/chromatograms/mk6124_c09.zip

Restriction Sites: SgfI-MluI

Cloning Scheme:

Cloning sites used for ORF Shuttling:



* The last codon before the Stop codon of the ORF

ACCN: NM_014579

ORF Size: 927 bp

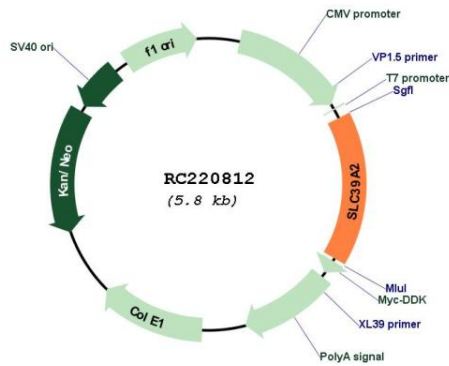
OTI Disclaimer: The molecular sequence of this clone aligns with the gene accession number as a point of reference only. However, individual transcript sequences of the same gene can differ through naturally occurring variations (e.g. polymorphisms), each with its own valid existence. This clone is substantially in agreement with the reference, but a complete review of all prevailing variants is recommended prior to use. [More info](#)

OTI Annotation: This clone was engineered to express the complete ORF with an expression tag. Expression varies depending on the nature of the gene.

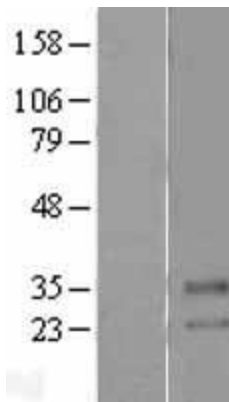
Components: The ORF clone is ion-exchange column purified and shipped in a 2D barcoded Matrix tube containing 10ug of transfection-ready, dried plasmid DNA (reconstitute with 100 ul of water).

Reconstitution Method:	<ol style="list-style-type: none">1. Centrifuge at 5,000xg for 5min.2. Carefully open the tube and add 100ul of sterile water to dissolve the DNA.3. Close the tube and incubate for 10 minutes at room temperature.4. Briefly vortex the tube and then do a quick spin (less than 5000xg) to concentrate the liquid at the bottom.5. Store the suspended plasmid at -20°C. The DNA is stable for at least one year from date of shipping when stored at -20°C.
Note:	Plasmids are not sterile. For experiments where strict sterility is required, filtration with 0.22um filter is required.
RefSeq:	<u>NM_014579.1</u> , <u>NP_055394.1</u>
RefSeq Size:	1358 bp
RefSeq ORF:	930 bp
Locus ID:	29986
UniProt ID:	<u>Q9NP94</u>
Cytogenetics:	14q11.2
Protein Families:	Transmembrane
MW:	32.6 kDa
Gene Summary:	This gene encodes a member of the ZIP family of metal ion transporters. The encoded protein functions as a zinc transporter. Mutations in this gene may be associated with susceptibility to carotid artery disease. Multiple transcript variants have been described. [provided by RefSeq, Mar 2010]

Product images:



Circular map for RC220812



Western blot validation of overexpression lysate (Cat# [LY402350]) using anti-DDK antibody (Cat# [TA50011-100]). Left: Cell lysates from un-transfected HEK293T cells; Right: Cell lysates from HEK293T cells transfected with RC220812 using transfection reagent MegaTran 2.0 (Cat# [TT210002]).