

Product datasheet for **RC220808**

ZRANBI (NM_017580) Human Tagged ORF Clone

Product data:

Product Type:	Expression Plasmids
Tag:	Myc-DDK
Symbol:	ZRANBI
Synonyms:	TRABID
Mammalian Cell Selection:	Neomycin
Vector:	pCMV6-Entry (PS100001)
E. coli Selection:	Kanamycin (25 ug/mL)



ORF Nucleotide Sequence: >RC220808 representing NM_017580
Red=Cloning site Blue=ORF Green=Tags(s)

TTTTGTAATACGACTCACTATAGGGCGCCGGGAATTCGTGCGACTGGATCCGGTACCGAGGAGATCTGCC
GCCGCGATCGCC

ATGTCAGAACGTGGAATTAAGTGGGCTTGTGAATATTGTACGTATGAAAACCTGGCCATCTGCAATCAAGT
GTAATATGTGTCGTGCCAAAGACCTAGTGGAAACAATTATTACAGAAGATCCATTTAAAAGTGGTTCAAG
TGATGTTGGTAGAGATTGGGATCCTTCCAGCACCAGGAGGAAAGTAGTCTTTGATATGTCAGACTCT
AGTGCAAGACCAAGGGTGAATCTTCGTATAGCATGGAAAAAGCAATAAGTGGTCAAGCCACATGTGTA
CATATTTGAACTGGCCAAGAGCAATCAGATGTACCCAGTGCCTATCCCAACGTAGGACCAGGAGTCCCTAC
AGAATCTCCTCAGTCTCAGGATCTGGCTCAAGACCAGTTGCTTTTTCTGTTGATCCTTGTGAGGAATAC
AATGATAGAAAATAAAGTGAACACTAGGACACAGCACTGGACTTGCTCTGTTTGACATATGAAAACCTGGG
CCAAGGCTAAAAGATGTGTTGTTGTGATCATCCAGACCTAATAACATTGAAGCAATAGAATTGGCAGA
GACTGAAGAGGCTTCTTCAATAATAATGAGCAAGACAGAGCTCGATGGAGGGGAAGTTCAGTAGTGGT
AATAGCCAAAAGGAGATCACCTCCTGCTACGAAGCGGGACTCTGAAGTGAATAAGGATTTTCAGAGGATTG
AATTGGCTGGTGTGTTGGGAAGCAAGGAGGAACTTGAAGTAGACTTTAAAAAATAAGCAATAAAAA
CAGGATGAAAAAGACTGATTGGCTCTTCTCAATGCTTGTGTGGGGTGTAGAAGGTGATTTAGCTGCC
ATAGAAGCATACAAGTATCAGGAGGAGACATTGCACGTGAGTCAAGCAGATGAAGTACGCTTGTGTA
ATCGTCTTCTGCCTTTGATGTTGGCTATACTCTTGTACACTTGGCTATACGTTTTTCAGAGGAGGATAT
GCTAGCAATATTGCTTACAGAGGTGTCTCAACAAGCAGCAAAAGTGTATTCCAGCAATGGTGTGCTGAA
CTGACAGAACAAAACCGGAGAGAGATAGCTGCCTCTTTCATCAGAGAAAGGGGATTTTGTGCTGCTATT
TTCTGACTGACCTTGTAACTTTACATTGCCAGCAGATATTGAAGATTTGCCCAACAGTCCAAGAAAA
ATTATTTGATGAGGTGCTTGTAGAGACGTTCAAAAAGAATTAGAAGAAGAATCTCCAATTAATACTGG
TCCTTGGAAATTGGCTACACGTTTGGACAGTCTGACTGTATGCACTTTGGAACCGGACTGCAGGAGACTGCC
TACTTGATTGAGTCTACAAGTACCTGGGGCATCTATGACAAGGACTCAGTGCCTCGGAAAGCCCTGCA
TGACAGCCTGCATGACTGTTACATTGGTTTTACACACGCTGGAAGATTGGGAATCATGGTATTCTCAG
AGCTTTGGTTTTACATTTTTCTTGGAGAGAAGAACAGTGGCAAGAAGACTGGGCATTTATACTCTCTTGG
CTAGTCAGCCTGGAGCAAGCTTGGAGCAGACGCACATTTTTGTAAGTGGCACATATTCTTAGACGACCAAT
TATAGTTTATGGAGTAAAATATTACAAGAGTTTCCGGGGAGAACTTTAGGATATACTCGGTTTCAAGGT
GTTTATCTGCCTTTGTTGGGAACAGAGTTTTTGTGGAAAAGTCCGATTGCTCTGGGTTATACGAGGG
GCCACTTCTCTGCTTTGGTTGCCATGGAAAATGATGGCTATGGCAACCGAGGTGCTGGTGTAACTCAA
TACCGATGATGATGCACCATCACATTTTTGCCTCTGGTTGACAGTGAAGGAAGCTACTCCATGTGCAC
TTCTTTCTGCTCAGGAGCTAGGTAATGAGGAACAGCAAGAAAACTGCTCAGGGAGTGGCTGGACTGCT
GTGTGACGGAGGGGGAGTTCTGGTTGCCATGCAGAAGAGTTCTCGGCGCGAAATCACCCCTGGTCAC
TCAGATGGTAGAAAAATGGCTTACCGCTACCGACAGATCCGGCCGTGTACATCCCTGTCTGATGGAGAG
GAAGATGAGGATGATGAAGATGAA

ACGCGTACGCGCCGCTCGAGCAGAACTCATCTCAGAAGAGGATCTGGCAGCAATGATATCTGGATT
ACAAGGATGACGACGATAAGGTTTAA

Protein Sequence: >RC220808 representing NM_017580
 Red=Cloning site Green=Tags(s)

MSE^RGIKWACEYCTYENWPSAIKCTMCRAQRPSGTIITEDPFKSGSSDVGRDWDPSSTEGGSSPLICPDS
 SARPRVKSSYSMENANKWSCHMCTYLNWPRAIRCTQCLSQRRTRSPTE^SPQSSGSGSRPVAFSVDPCEEY
 NDRNKLNTRTQHWTCVCTYENWAKAKRCVVDHPRPN^NIEAIELAETEEASSIINEQDRARWRGSCSSG
 NSQRRSP^PATKRDSEVKMDFQRIELAGAVGSKEELEVDFK^LKQIKNRMKKTDLWFLNACVGVVEGD^LAA
 IEAYKSSGGDIARQLTADEVRLLNRP^SAFDVGYTLVHLAIRFQRQDMLAILL^TEV^SQQAAKCIPAMVCP^E
 LTEQIRREIAASLHQRKGFAC^YFLTDLVFTLPADIEDLPPTVQEKLFDEVLDRD^VQKELEEEESPIIN^W
 SLELATRLDSRLYALWNR^TAGDCLLDSVLQATWGIYDKDSVLRKALHDSLHDCSHWFYTRWKD^WESWYSQ
 SFG^LHLFSLREEQWQEDWAFILSLASQPGASLEQTHIFVLAHILRRPIIVYGVKYYK^SFRGETLGYTRFQ^G
 VYLPLLWEQSF^CWKSPIALGYTRGHFSALVAMENDGYGNRGAGANLNTDDVTITFLLPLVDSERKLLH^VH
 FLSAQELGNEEQEKLLREWLDCCVTEGGV^LVAMQKSSRRRNHPLVTQMVEKWLDRYRQIRPCTSLSDGE
 EDEDEDE

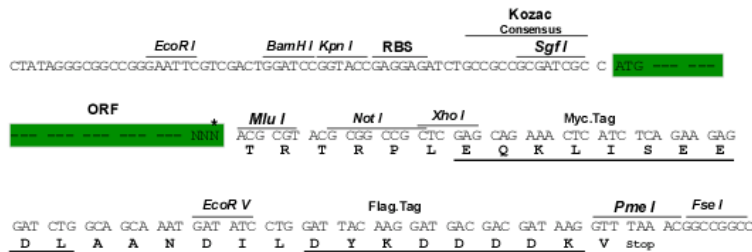
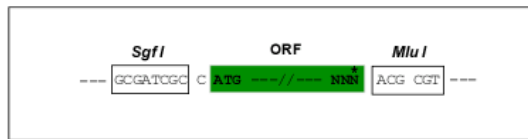
TRTRPLEQKLI SEEDLAANDILDYKDDDDKV

Chromatograms: https://cdn.origene.com/chromatograms/mk8041_e03.zip

Restriction Sites: SgfI-MluI

Cloning Scheme:

Cloning sites used for ORF Shuttling:



* The last codon before the Stop codon of the ORF

ACCN: NM_017580

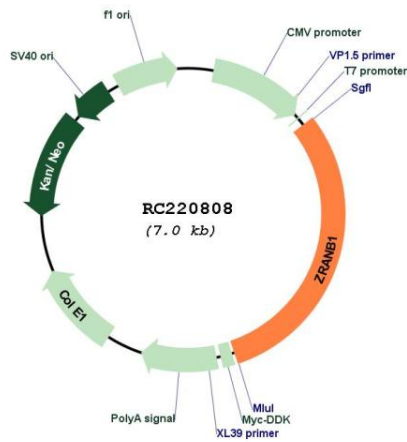
ORF Size: 2124 bp

OTI Disclaimer: The molecular sequence of this clone aligns with the gene accession number as a point of reference only. However, individual transcript sequences of the same gene can differ through naturally occurring variations (e.g. polymorphisms), each with its own valid existence. This clone is substantially in agreement with the reference, but a complete review of all prevailing variants is recommended prior to use. [More info](#)

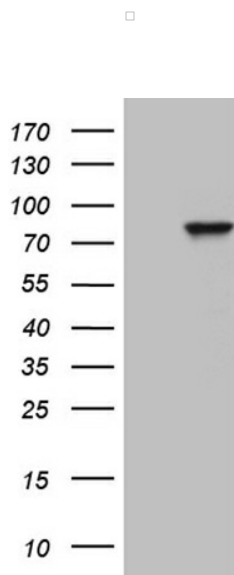
OTI Annotation: This clone was engineered to express the complete ORF with an expression tag. Expression varies depending on the nature of the gene.

Components:	The ORF clone is ion-exchange column purified and shipped in a 2D barcoded Matrix tube containing 10ug of transfection-ready, dried plasmid DNA (reconstitute with 100 ul of water).
Reconstitution Method:	<ol style="list-style-type: none">1. Centrifuge at 5,000xg for 5min.2. Carefully open the tube and add 100ul of sterile water to dissolve the DNA.3. Close the tube and incubate for 10 minutes at room temperature.4. Briefly vortex the tube and then do a quick spin (less than 5000xg) to concentrate the liquid at the bottom.5. Store the suspended plasmid at -20°C. The DNA is stable for at least one year from date of shipping when stored at -20°C.
Note:	Plasmids are not sterile. For experiments where strict sterility is required, filtration with 0.22um filter is required.
RefSeq:	NM_017580.3
RefSeq Size:	2710 bp
RefSeq ORF:	2127 bp
Locus ID:	54764
UniProt ID:	Q9UGI0
Cytogenetics:	10q26.13
Domains:	zf-RanBP
Protein Families:	Druggable Genome
MW:	80.8 kDa
Gene Summary:	Specifically hydrolyzes 'Lys-29'-linked and 'Lys-33'-linked diubiquitin. Also cleaves 'Lys-63'-linked chains, but with 40-fold less efficiency compared to 'Lys-29'-linked ones. Positive regulator of the Wnt signaling pathway that deubiquitinates APC protein, a negative regulator of Wnt-mediated transcription. Plays a role in the regulation of cell morphology and cytoskeletal organization. Required in the stress fiber dynamics and cell migration. May also modulate TNF-alpha signaling.[UniProtKB/Swiss-Prot Function]

Product images:



Circular map for RC220808



Western validation with an anti-DDK antibody
 * L: Control HEK293 lysate R: Over-expression lysate

HEK293T cells were transfected with the pCMV6-ENTRY control (Cat# [PS100001], Left lane) or pCMV6-ENTRY ZRANB1 (Cat# RC220808, Right lane) cDNA for 48 hrs and lysed. Equivalent amounts of cell lysates (5 ug per lane) were separated by SDS-PAGE and immunoblotted with anti-ZRANB1 (Cat# [TA810163])(1:2000). Positive lysates [LY413719] (100ug) and [LC413719] (20ug) can be purchased separately from OriGene.