

Product datasheet for RC220803

ADAMTS6 (NM_197941) Human Tagged ORF Clone

Product data:

Product Type:	Expression Plasmids
Product Name:	ADAMTS6 (NM_197941) Human Tagged ORF Clone
Tag:	Myc-DDK
Symbol:	ADAMTS6
Synonyms:	ADAM-TS 6; ADAM-TS6; ADAMTS-6
Mammalian Cell Selection:	Neomycin
Vector:	pCMV6-Entry (PS100001)
E. coli Selection:	Kanamycin (25 ug/mL)
ORF Nucleotide Sequence:	>RC220803 representing NM_197941 Red=Cloning site Blue=ORF Green=Tags(s)

TTTTGTAATACGACTCACTATAGGGCGGCCGGAATTCGTCGACTGGATCCGGTACCGAGGAGATCTGCC
GCC**CGATCGCC**

ATGGAATTTTGTGGAAGACGTTGACCTGGATTTGAGCCTCATCATGGCTTCATCGGAATTTTCATAGTG
ACCACAGGCTTTCATACAGTTCTCAAGAGGAATTCCTGACTTATCTTGAACACTACCAGCTAACTATTCC
AATAAGGGTTGATCAAAATGGAGCATTTCTCAGCTTTACTGTGAAAAATGATAAACACTCAAGGAGAAGA
CGGAGTATGGACCCTATTGATCCACAGCAGGCAGTATCTAAGTTATTTTTAAACTTTCAGCCTATGGCA
AGCACTTTCATCTAAACTTGACTCTCAACACAGATTTTGTGTCCAAACATTTTACAGTAGAATATTGGGG
GAAAGATGGACCCAGTGGAAACATGATTTTTAGACAACCTGTCATTACACAGGATATTTGCAAGATCAA
CGTAGTACAACCTAAAGTGGCTTTAAGCAACTGTGTTGGGTTGCATGGTGTATTGCTACAGAAGATGAAG
AGTATTTTATCGAACCTTTAAAGAATACCACAGAGGATCCAAGCATTTTAGTTATGAAAATGGCCACCC
TCATGTTATTTACAAAAAGTCTGCCCTTCAACAACGACATCTGTATGATCACTCTCATTGTGGGGTTTCG
GATTTCAAGAAGTGGCAAACCTTGGTGGCTGAATGACACATCCACTGTTTCTTATTACTACCAATTA
ACAACACACATATCCACCACAGACAGAAGAGATCAGTGAGCATTGAACGGTTTGTGGAGACATTGGTAGT
GGCAGACAAAAATGATGGTGGGCTACCATGGCCGCAAAGACATTGAACATTACATTTGAGTGTGATGAAT
ATTGTTGCCAACTTTACCGTGATTTCCAGCCTAGGAAACGTTGTGAATATTATAGTGGCCGCTTAATTG
TTCTCACAGAAGATCAGCCAAACTTGGAGATAAACCCACATGCAGACAAGTCCCTCGATAGCTTCTGTAA
ATGGCAGAAATCCATTCTCTCCACCAAAGTGATGGAACACCATTCCAGAAAATGGGATTGCCACCAC
GATAATGCAGTCTTATTACTAGATATGATATCTGCCTTATAAAAAAAGCCCTGTGGAACACTGGGCT
TGGCCTCTGTGGCTGGAATGTGTGAGCCTGAAAGGAGCTGCAGCATTAAATGAAGACATTGGCCTGGGTT
AGCTTTTACCATTGCACATGAGATTGGTACAATTTTGGTATGAACCATGATGGAATTGGAATTTCTTGT
GGGACGAAAGGTCATGAAGCAGCAAACTTATGGCAGCTCACATTACTGCGAATACCAATCCTTTTTCT
GGTCTGCTTGAGTGCAGACTACATCACCAGCTTCTAGATTGAGCCGTTGACTTGCCTTGATAATGA
GCCTCCAAGCGTGACTTCTTTATCCAGCTGTGGCCCAAGTCAAGTGTATGATGCTGATGAGCAATGT



[View online >](#)

CGTTTCCAGTATGGAGCAACCTCCC GCCAATGTAATATGGGGAAGTGTGTAGAGAGCTCTGGTGTCTCA
 GCAAAAGCAACCCTGTGTACCAACAGTATTCCAGCAGCTGAGGGGACACTGTGTCAAACCTGGGAATAT
 TGA AAAAGGGTGGTGTATCAGGGAGATTGTGTTCTTTTGGCACTTGGCCCCAGAGCATAGATGGGGGC
 TGGGGTCCCTGGTCACTATGGGGAGAGTGCAGCAGGACCTGCGGGGGAGGCGTCTCTCATCCCTAAGAC
 ACTGTGACAGTCCAGCACCTTCAGGAGGTGAAAAATTTGCCCTGGGAAAGGAAACCGTATCGCTCCTG
 TAACACAGATCCATGCCCTTTGGGTTCCCGAGATTTTCGAGAGAAACAGTGTGCAGACTTTGACAATATG
 CCTTTCCGAGGAAAGTATTATAACTGAAACCCATACTGGAGGTGGGGTAAAACCTTGTGCATTAAACT
 GCCTGGCTGAAGTTATAATTTCTACACTGAACGTGCTCCTGCGGTGATCGATGGGACCCAGTGAATGC
 GGATTCAGTGGATATCTGCATCAATGGAGAATGCAAGCACGTAGGCTGTGATAATATTTTGGGATCTGAT
 GCTAGGGAAGATAGATGTCGAGTCTGTGGAGGGGACGGAAGCACATGTGATGCCATTGAAGGGTTCTTCA
 ATGATTCAGTCCCGAGGGGAGGCTACATGGAAGTGGTGCAGATACCAAGAGGCTCTGTTCACATTGAAGT
 TAGAGAAGTTGCCATGTCAAAGAACTATATTGCTTTAAAATCTGAAGGAGATGATTACTATATTAATGGT
 GCCTGGACTATTGACTGGCCTAGGAAATTTGATGTTGCTGGGACAGCTTTTCATTACAAGAGACCAACTG
 ATGAACCAGAATCCTTGAAGCTCTAGGCTCTACCTCAGAAAATCTCATCGTCATGGTTCTGCTTCAAGA
 ACAGAATTTGGGAATTAGGTATAAGTTCATGTTCCCATCACTCGAACTGGCAGTGGAGATAATGAAGTT
 GGCTTTACATGGAATCATCAGCCTTGGTCAGAATGCTCAGCTACTTGTGCTGGAGGTGCCAAAGACAGG
 AGGTGGTCTGTAAAAGGTTGGATGACAACCTCCATTGTCCAGAACAATTACTGTGATCCTGACAGTAAAGCC
 ACCTGAAAATCAAAGAGCCTGCAACACTGAGCCCTGCCACCTGAGTGGTTCAATGGGGATTGGTTGGAA
 TGCAGCAAAGACTTGTGATGGTGGGATGCGCACAAGGGCAGTGTCTGCATCAGGAAGATCGGACCTTCTG
 AGGAGGAGACGCTGGACTACAGTGGTTGTTTAAACACCCGGCCTGTGAAAAAGAGCCCTGCAACAACCA
 GTCATGTCACCACAGTGGGTGGCTTTGGACTGGTCTGAGTGTACTCCAAAATGTGGTCCAGGATTCAAG
 CATCGGATTGTTCTGTGCAAGAGCAGTGACCTTTCTAAGACATTCAGCTGCACAATGTCCAGAGGAAA
 GCAAACTCCTGTCCGCATCCGCTGCAGTTTGGGCCGCTGCCCTCCTCCTCGTGGGTCCAGGAGACTG
 GGGCCAGTGTCTGCTCAGTGTGCCTTGGACAGCAGATGAGAAGTGTGCAAGTGTCTCTCCTACACCCGGA
 CAGGCATCTAGTACTGTCTAGAAAAGTGTTCGGCCTCCATCAATGCAGCAGTGTGAAAGCAAATGTGACA
 GTACCCCATTTCTAATACTGAAGAGTGCAAAAGATGTGAATAAAGTGGCTATTGCCCACTGGTGTGAA
 GTTCAAGTTCTGCAGTCGAGCATACTTCAGACAGATGTGTTGTAAGACCTGCCAAGGACAC

ACGCGTACGCGGCCGCTCGAGCAGAAACTCATCTCAGAAGAGGATCTGGCAGCAAATGATATCCTGGATT
 ACAAGGATGACGACGATAAGGTTTAA

Protein Sequence:

>RC220803 representing NM_197941
 Red=Cloning site Green=Tags(s)

MEILWKTLTWILSLIMASSEFHSDHRLSYSSQEEFLTYLEHYQLTIPIRVDQNGAFLSFTVKNDKHSRRR
 RSM DPIDPQQAVSKLFFKL SAYGKHFLNLT LNTDFVSKHFTVEYWGKDPQWKHDFLDNCHYTYGLQDQ
 RSTTKVALSNCVGLHGVIATEDEEYFIEPLKNTTEDSKHF SYENHHPHVIYKKSALQQRHLYDHS HCGVS
 DFTRSGKPWWLNDSTVSYSLPINNTHIHRQKRSVSIERFVETLVVADKMMVGYHGRKDI EHYIL SVMN
 IVAKLYRDS S L GNVVNIIVARLIVLTEDQP NLEINHADKSLDSFCKWQKSILSHQSDGNTIPENGLIAH
 DNAVLITRYDICTYKNKPCGTLGLASVAGMCEPERSCSINEDI GLGSAFTIAHEIGHNFGMNHGDIGNSC
 GTKGHEAAKLMAAHITANTNPF SWSACSRDYITSFLDSGRGTCLDNEPPKRDFLYPAVAPGQVYDADEQC
 RFQYGATSRQCKYGEVCRELWCLSKSNRCVTNSIPAAEGLCQTGNIEKWGYQGDVFPFTWPQSIDGG
 WGPWSLWGECSRTCGGVSSSLRHCDSPAPSGGKYCLGERKRYRSCNTDPCPLGSRDFREKQCADFDM
 PFRGKYNNWKPYTGGGVKPCALNCLAEGYNFYTERAPAVIDGTQCNADSLD ICINGECKHVGC DNILGSD
 AREDRCRVCGDGSTCDAIEGFNDSLPRGGYMEVVQIPRGSVHIEVREVAMSKNYIALKSEGDDYYING
 AWTIDWPRKFDVAGTAFHYKRPTDEPESLEALGPTSENLIVMVLLEQNLGIRYKFNVPITRTGSGDNEV
 GFTWNHQPWSECSATCAGGVQRQEVVCKRLDDNSIVQNNYCDPDSKPPENQRACNTEPCPPEWFIGDWLE
 CSKTCDDGMRTRAVLCIRKIGPSEETLDYSGCLTHRPVEKEPCNNQSCPPQWVALDWSECTPKCGPGFK
 HRIVLCKSSDLSKTFPAAQCPEESKPPVRIRCSLGRCPPrwvtdgdwgqcsaqcglgqqmrtvqclsytg
 QASSDCL ETVRPPSMQQCESKCDSTPISNTEECKDVNKVAYCPLVLKFKFC SRA YFRQMCCCKTCQGH

TRTRPLEQKLISEEDLAANDILDYKDDDDKV

Chromatograms: https://cdn.origene.com/chromatograms/mk8013_g02.zip

Restriction Sites: SgfI-MluI

Cloning Scheme:



ACCN: NM_197941

ORF Size: 3351 bp

OTI Disclaimer: Due to the inherent nature of this plasmid, standard methods to replicate additional amounts of DNA in E. coli are highly likely to result in mutations and/or rearrangements. Therefore, OriGene does not guarantee the capability to replicate this plasmid DNA. Additional amounts of DNA can be purchased from OriGene with batch-specific, full-sequence verification at a reduced cost. Please contact our customer care team at custsupport@origene.com or by calling 301.340.3188 option 3 for pricing and delivery.

The molecular sequence of this clone aligns with the gene accession number as a point of reference only. However, individual transcript sequences of the same gene can differ through naturally occurring variations (e.g. polymorphisms), each with its own valid existence. This clone is substantially in agreement with the reference, but a complete review of all prevailing variants is recommended prior to use. [More info](#)

OTI Annotation: This clone was engineered to express the complete ORF with an expression tag. Expression varies depending on the nature of the gene.

Components: The ORF clone is ion-exchange column purified and shipped in a 2D barcoded Matrix tube containing 10ug of transfection-ready, dried plasmid DNA (reconstitute with 100 ul of water).

Reconstitution Method:

1. Centrifuge at 5,000xg for 5min.
2. Carefully open the tube and add 100ul of sterile water to dissolve the DNA.
3. Close the tube and incubate for 10 minutes at room temperature.
4. Briefly vortex the tube and then do a quick spin (less than 5000xg) to concentrate the liquid at the bottom.
5. Store the suspended plasmid at -20°C. The DNA is stable for at least one year from date of shipping when stored at -20°C.

RefSeq: [NM_197941.4](#)

RefSeq Size: 7289 bp

RefSeq ORF: 3354 bp

Locus ID: 11174

UniProt ID: [Q9UKP5](#)

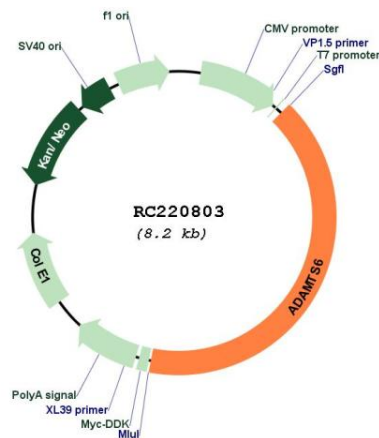
Cytogenetics: 5q12.3

Protein Families: Protease

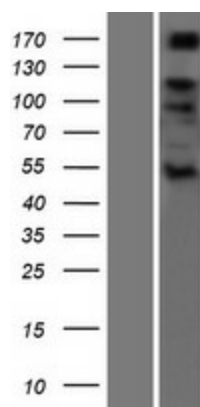
MW: 122.7 kDa

Gene Summary: This gene encodes a member of the ADAMTS (a disintegrin and metalloproteinase with thrombospondin motifs) protein family. Members of the family share several distinct protein modules, including a propeptide region, a metalloproteinase domain, a disintegrin-like domain, and a thrombospondin type 1 (TS) motif. Individual members of this family differ in the number of C-terminal TS motifs, and some have unique C-terminal domains. The encoded preproprotein is proteolytically processed to generate the mature enzyme. Expression of this gene may be regulated by the cytokine TNF-alpha. [provided by RefSeq, Mar 2016]

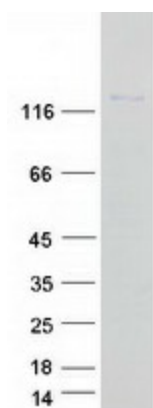
Product images:



Circular map for RC220803



Western blot validation of overexpression lysate (Cat# [LY405147]) using anti-DDK antibody (Cat# [TA50011-100]). Left: Cell lysates from untransfected HEK293T cells; Right: Cell lysates from HEK293T cells transfected with RC220803 using transfection reagent MegaTran 2.0 (Cat# [TT210002]).



Coomassie blue staining of purified ADAMTS6 protein (Cat# [TP320803]). The protein was produced from HEK293T cells transfected with ADAMTS6 cDNA clone (Cat# RC220803) using MegaTran 2.0 (Cat# [TT210002]).