

Product datasheet for RC220795

BCCIP (NM_016567) Human Tagged ORF Clone

Product data:

Product Type:	Expression Plasmids
Product Name:	BCCIP (NM_016567) Human Tagged ORF Clone
Tag:	Myc-DDK
Symbol:	BCCIP
Synonyms:	TOK-1; TOK1
Mammalian Cell Selection:	Neomycin
Vector:	pCMV6-Entry (PS100001)
E. coli Selection:	Kanamycin (25 ug/mL)
ORF Nucleotide Sequence:	>RC220795 representing NM_016567 Red=Cloning site Blue=ORF Green=Tags(s)

TTTTGTAATACGACTCACTATAGGGCGGCCGGAATTCGTCGACTGGATCCGGTACCGAGGAGATCTGCC
GCC**CGATCGCC**

ATGGCGTCCAGGTCTAAGCGCGTGCCGTGAAAGTGGGGTTCGCGAGCCCGGATCCCCAGTCCAGC
GCGACGAGGAAGAGGAAAAAGAAGTCGAAAATGAGGATGAAGACGATGATGACAGTGACAAGGAAAAAGGA
TGAAGAGGACGAGGTCATTGACGAGGAAGTGAATATTGAATTTGAAGCTTATTCCTATCAGATAATGAT
TATGACGGAATTAAGAAATTACTGCAGCAGCTTTTTCTAAAGGCTCCTGTGAACACTGCAGAACTAACAG
ATCTCTTAATTCAACAGAACCATTGGGAGTGTGATTAAGCAAACGGATGTTTCAGAAGACAGCAATGA
TGATATGGATGAAGATGAGGTTTTGGTTTCATAAGCCTTTTAAATTTAACTGAAAGAAAGGTACCCAG
TGTGTTGAACAAATTCAGAGTTGGTTCTACGCTTCTGTGAGAAGAACTGTGAAAAGAGCATGGTTGAAC
AGCTGGACAAGTTTTTAAATGACACCACCAAGCCTGTGGGCTTCTCCTAAGTAAAAGATTCAATATGT
CCCTCCACAGATCGCTCTGCCCATGTACCAGCAGCTTCAGAAAGAACTGGCGGGGCACACAGAACCAAT
AAGCCATGTGGGAAGTGTACTTTTACCTTCTGATTAGTAAGACATTTGTGGAAGCAGGAAAAACAATT
CCAAAAAGAAACCTAGCAACAAAAAGAAAGCTGCGTTAATGTTTGCAATGCAGAGGAAGAATTTTCTA
TGAGGAGCAGGAAAAACCTGAGGTGCTTGGAGGTCCAGACACAAGAAGAGGATTGGAACCAAGTCCGATA
CAGCACAATGGTGGTTCACGGGGCAAGTGACAGCCCTGGTTTCTCTGAAGGCTGGACTAATTCATCAA
GATCAACTCTAAGTGATTTCCAGGGAACCTTCATGACTGTTGGAATTGCTCTGTCA

ACGCGTACGCGGCCGCTCGAGCAGAAACTCATCTCAGAAGAGGATCTGGCAGCAATGATATCCTGGATT
ACAAGGATGACGACGATAAGGTTTAA



[View online »](#)

Protein Sequence: >RC220795 representing NM_016567
Red=Cloning site Green=Tags(s)

```
MASRSKRRAVESGVPQPPDPPVQRDEEEKEVENEDDDSDKEKDEEVIDEEVNIEFEAYSLSNDND
YDGIKLLQQLFLKAPVNTAELTDLLIQQNHIGSVIKQTDVSEDSNDMDDEVEVGFISLLNLTERKGTQ
CVEIQIQLVLRFCENCKEKSMEVQLDKFLNDTTKPVGLLLSERFINVPPQIALPMYQQLQKELAGAHRTN
KPCGKCYFYLLISKTFVEAGKNNSSKKKPSNKKKAALMFANAEEFFYEEQKPEVLGGPDTRRGLEPVPI
QHNGGSRGQVTALVSLKAGLIQSRSTLSDFQGTFTVGIALS
```

TRTRPLEQKLISEEDLAANDILDYKDDDDKV

Chromatograms: https://cdn.origene.com/chromatograms/mg3127_g07.zip

Restriction Sites: SgfI-MluI

Cloning Scheme:



ACCN: NM_016567

ORF Size: 966 bp

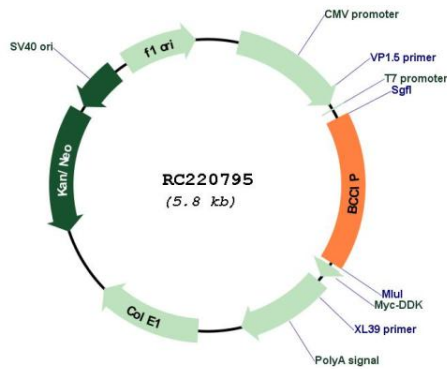
OTI Disclaimer: The molecular sequence of this clone aligns with the gene accession number as a point of reference only. However, individual transcript sequences of the same gene can differ through naturally occurring variations (e.g. polymorphisms), each with its own valid existence. This clone is substantially in agreement with the reference, but a complete review of all prevailing variants is recommended prior to use. [More info](#)

OTI Annotation: This clone was engineered to express the complete ORF with an expression tag. Expression varies depending on the nature of the gene.

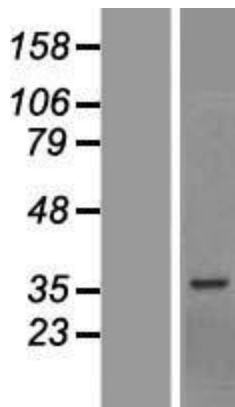
Components: The ORF clone is ion-exchange column purified and shipped in a 2D barcoded Matrix tube containing 10ug of transfection-ready, dried plasmid DNA (reconstitute with 100 ul of water).

Reconstitution Method:	<ol style="list-style-type: none">1. Centrifuge at 5,000xg for 5min.2. Carefully open the tube and add 100ul of sterile water to dissolve the DNA.3. Close the tube and incubate for 10 minutes at room temperature.4. Briefly vortex the tube and then do a quick spin (less than 5000xg) to concentrate the liquid at the bottom.5. Store the suspended plasmid at -20°C. The DNA is stable for at least one year from date of shipping when stored at -20°C.
RefSeq:	NM_016567.4
RefSeq Size:	1290 bp
RefSeq ORF:	969 bp
Locus ID:	56647
UniProt ID:	Q9P287
Cytogenetics:	10q26.2
Protein Families:	Druggable Genome, Stem cell - Pluripotency
MW:	36 kDa
Gene Summary:	<p>This gene product was isolated on the basis of its interaction with BRCA2 and p21 proteins. It is an evolutionarily conserved nuclear protein with multiple interacting domains. The N-terminal half shares moderate homology with regions of calmodulin and M-calpain, suggesting that it may also bind calcium. Functional studies indicate that this protein may be an important cofactor for BRCA2 in tumor suppression, and a modulator of CDK2 kinase activity via p21. This protein has also been implicated in the regulation of BRCA2 and RAD51 nuclear focus formation, double-strand break-induced homologous recombination, and cell cycle progression. Multiple transcript variants encoding different isoforms have been described for this gene. [provided by RefSeq, Jul 2008]</p>

Product images:



Circular map for RC220795



Western blot validation of overexpression lysate (Cat# [LY413842]) using anti-DDK antibody (Cat# [TA50011-100]). Left: Cell lysates from untransfected HEK293T cells; Right: Cell lysates from HEK293T cells transfected with RC220795 using transfection reagent MegaTran 2.0 (Cat# [TT210002]).