

## Product datasheet for **RC220793**

### Chordin (CHRD) (NM\_003741) Human Tagged ORF Clone

#### Product data:

Product Type:	Expression Plasmids
Product Name:	Chordin (CHRD) (NM_003741) Human Tagged ORF Clone
Tag:	Myc-DDK
Symbol:	Chordin
Mammalian Cell Selection:	Neomycin
Vector:	pCMV6-Entry (PS100001)
E. coli Selection:	Kanamycin (25 ug/mL)



[View online »](#)

**ORF Nucleotide Sequence:**

>RC220793 ORF sequence  
 Red=Cloning site Blue=ORF Green=Tags(s)

TTTTGTAATACGACTCACTATAGGGCGGCCGGGAATTCGTCGACTGGATCCGGTACCGAGGAGATCTGCC  
 GCC**CGGATCGCC**

ATGCCGAGCTCCCGGCCCGCCGGCCCGCTGCTGCTCCTCGGGCTGCTGCTGCTCGGCTCCCGGCCGG  
 CCCGCGCGCCGGCCAGAGCCCCCGTCTGCCATCCGTTCTGAGAAGGAGCCGCTGCCGTTCCGGG  
 AGCGGCAGGCTGCACCTTCGGCGGGAAGGTCTATGCCTTGACGAGACGTGGCACCCGGACCTAGGGGAG  
 CCATTCGGGGTGTGCGCTGCGTGTGCGCCTGCGAGGCGCCTCAGTGGGGTCCGCGTACCAGGGGCC  
 CTGGCAGGGTCACTGCAAGAACATCAAACCAGAGTGCCCAACCCGGCCTGTGGCAGCCGCGCCAGCT  
 GCCGGGACTGCTGCCAGACTGCCCCAGGAGCGCAGCAGTTCGGAGCGGCAGCCGAGCGGCCTGTCC  
 TTCGAGTATCCGCGGGACCCGGAGCATCGCAGTTATAGCGACCCGCGGGAGCCAGGCGTGAAGAGCGG  
 CCCGTGGTGACGGCCACACGGACTTCGTGGCGTGTGACAGGGCCGAGGTCGACGGCGGTGGCAGGAGC  
 CCGAGTCTCGCTGCTGCGCTCTAGCCTCCGCTTCTATCTCCTACAGGGCGCTGGACCGCCTACCAGG  
 ATCCGCTTCTCAGACTCCAATGGCAGTGTCTGTTTGGACACCCTGCAGCCCCACCAAGATGGCCTGG  
 TCTGTGGGGTGTGGCGGGCAGTGCCTCGGTTGTCTCTGCGGCTCCTTAGGGCAGAACAGTGCATGTGGC  
 ACTTGTGACACTCACTCACCTTCAGGGGAGGTCTGGGGGCTCTCATCCGGCACCGGGCCCTGGCTGCA  
 GAGACCTTCAGTGCCATCCTGACTCTAGAAGGCCCCACAGCAGGGCGTAGGGGGCATCACCTGCTCA  
 CTCTCAGTGACACAGAGGACTCCTTGCAATTTTTGCTGCTCTCCGAGGGCTGCTGGAACCCAGGAGTGG  
 GGGACTAACCCAGGTTCCCTTGAGGCTCCAGATTCTACACCAGGGGCAGCTACTGCGAGAACTTCAGGCC  
 AATGTCTCAGCCAGGAACAGGCTTTGCTGAGGTGCTGCCAACCTGACAGTCCAGGAGATGGACTGGC  
 TGGTGCTGGGGGAGCTGCAGATGGCCCTGGAGTGGCGAGGCGAGGCTGCGCATCAGTGACACAT  
 TGCTGCCAGGAAGAGCTGCGACGTCTGCAAAAGTGTCTTTGTGGGGCTGATGCCCTGATCCCAGTCCAG  
 ACGGGTGTGCCGCTCAGCCAGCCTCAGCTGTAGAAATGGTCCCTGATCTATCAGGTGCAAGTGG  
 TAGGGACAAGCAGTGAGGTGGTGGCCATGACACTGGAGACCAAGCCTCAGCGGAGGGATCAGCGCACTGT  
 CCTGTGCCACATGGCTGGACTCCAGCCAGGAGGACACACGGCCGTGGGTATCTGCCCTGGGCTGGGTGCC  
 CGAGGGGCTCATATGCTGCTGCAGAATGAGCTCTTCTGAACGTGGGCACCAAGGACTTCCAGACGGAG  
 AGCTTCGGGGGCAGTGGCTGCCCTGCCCTACTGTGGCATAGCGCCGCCATGACACGCTGCCCGTGGC  
 CCTAGCAGGAGCCCTGGTGTACCCCTGTGAAGAGCCAAGCAGCAGGGCACGCCTGGCTTTCCTGGAT  
 ACCCACTGTCACCTGCACTATGAAGTGTGCTGGCTGGGCTTGGTGGCTCAGAACAAGGCACTGTACTG  
 CCCACCTCCTTGGGCTCCTGGAACGCCAGGGCCTCGGGCGCTGCTGAAGGGATTCTATGGCTCAGAGGC  
 CCAGGGTGTGGTGAAGGACCTGGAGCCGGAACCTGCTGCGGCACCTGGCAAAGGCATGGCCTCCCTGATG  
 ATCACCACCAAGGGTAGCCCCAGAGGGGAGCTCCGAGGGCAGGTGCATAGCCAACCAATGTGAGGTTG  
 GCGGACTGCGCCTGGAGGCGGCCGGGGCCGAGGGGGTGGCGGGCTGGGGCTCCGGATACAGCCTCTGC  
 TGCGCCGCTGTGGTGCCTGGTCTCCCGGCCCTAGCGCCCGCCAAACCTGGTGGTCTGGGCGGCCCGA  
 GACCCCAACACATGCTTCTTCGAGGGGCAGCAGCGCCCCACGGGGCTCGCTGGGCGCCAACTACGACC  
 CGCTCTGCTCACTCTGCACCTGCCAGAGACGAACGGTGATCTGTGACCCGGTGGTGTGCCACCGCCAG  
 CTGCCACACCCGGTGCAGGCTCCCGACCAGTGTGCCCTGTTTGCCTGAGAAACAAGATGTCAGAGAC  
 TTGCCAGGGTGCAGAGCCGGGACCCAGGAGAGGGCTGCTATTTTGTGAGTGGTACCCGAGCTGGCGGG  
 CAGCGGGTACGCGGTGGCACCCGTTGTGCCCCCTTTGGCTTAATTAAGTGTGCTGTGACACTGCAA  
 GGGGGCACTGGAGAGGTGCACTGTGAGAAGGTGCAAGTGTCCCGGCTGGCCTGTGCCAGCCTGTGCGT  
 GTCAACCCACCGACTGCTGCAAACAGTGTCCAGTGGGGTGGGGGCCACCCAGCTGGGGGACCCCA  
 TGCAGGCTGATGGGCCCGGGCTGCCGTTTTGCTGGCAGTGGTTCAGAGAGTCAAGCTGGCACCC  
 CTCAGTCCCCCTTTGGAGAGATGAGCTGTATCACCTGCAGATGTGGGGCAGGGGTGCCTCACTGTGAG  
 CGGGATGACTGTTCACTGCCACTGTCTGTGGCTCGGGGAAGGAGAGTCGATGCTGTTCCGCTGCACGG  
 CCCACCGCGGCCAGCCAGAGACCAGAACTGATCCAGAGCTGGAGAAAGAAGCCGAAGGCTCT

**ACGCGT**ACGCGGCCGCTCGAGCAGAACTCATCTCAGAAGAGGATCTGGCAGCAAATGATATCCTGGATT  
 ACAAGGATGACGACGATAAGGTTTAA

**Protein Sequence:** >RC220793 protein sequence  
Red=Cloning site Green=Tags(s)

```
MPSLPAPPAPLLLLLLLLGSRPARGAGPEPPVLPPIRSEKEPLPVRGAAGCTFGGKVVYALDETHWPDLGE
PFGVMRCVLCACEAPQWGRRTGPRVRSCKNIKPECPTPACGQPRQLPGHCCQTCQERSSSERQPSGLS
FEYPRDPEHRSYSDRGEPGAEERARGDGHDFVALLTGPRSQAVARARVSLLRSSLRFSISYRRLDRPTR
IRFSDSNGSVLFEHPAAPTQDGLVCGVWRAVPRLSLRLLRAEQLHVALVTLTHPSGEVWGPIRHRALAA
ETFSAILTLEGPQQGVGGITLLTLDSTEDSLHFLLLFRGLLEPRSGGLTQVPLRLQILHQGQLLRELQA
NVSAQEPGFAEVLPNLTVQEMDWLVLGEQMALEWAGRPLRISGHIAARKSCDVLQSVLCGADALIPVQ
TGAAGSASLTLLNGSLIYQVQVVGTSSEVAMTLETKPQRDQRTVLCHMAGLQPGGHTAVGICPGLGA
RGAHMLLQNELFLNVGTKDFPDGELRGHVAALPYCGHSARHDTLPVPLAGALVLPVKSQAAGHAWLSLD
THCHLHYEVLLAGLGGSEQGTVAHLLGPPGTPGPRLLKGFYGSEAQGVVKDLEPELLRHLAKGMASLM
ITTKGSPRGELRGQVHIANQCEVGLRLEAAGAEGVRALGAPDTASAAPPVVPGLPALAPAKPGGPRPR
DPNTCFEFGQQRPHGARWAPNYDPLCSLCTCQRRTVICDPVVCPPSPCHPVQAPDQCCPVCPEKQDVRD
LPGLPRSRDPGEGCYFDGDRSWRAAGTRWHPVVPFGLIKCAVCTCKGGTGEVHCEKVQCPRLACAQPVV
VNPTDCKQCPVGSAGHPQLGDPMQADGPRGCRFAGQWFPESQSWHPSVPPFGEMSCITCRGAGVPHCE
RDDCSLPLSCGSGKESRCCSRCTAHRRPAPETRTDPELEKEAEGS
```

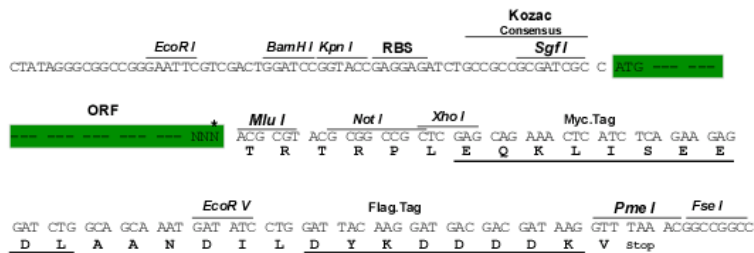
TRTRPLEQKLISEEDLAANDILDYKDDDDKV

**Chromatograms:** [https://cdn.origene.com/chromatograms/mk6561\\_e03.zip](https://cdn.origene.com/chromatograms/mk6561_e03.zip)

**Restriction Sites:** SgfI-MluI

**Cloning Scheme:**

Cloning sites used for ORF Shuttling:

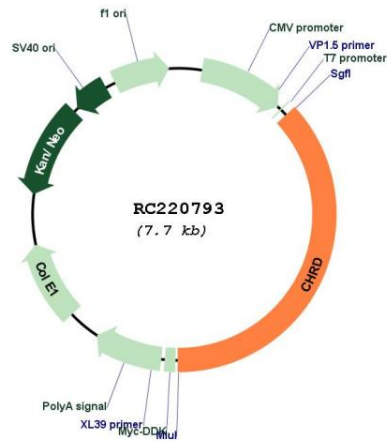


\* The last codon before the Stop codon of the ORF

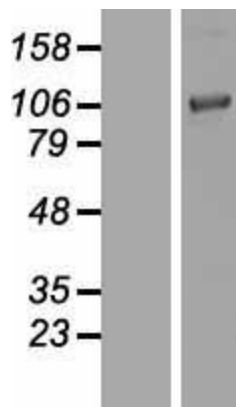
**ACCN:** NM\_003741

<b>ORF Size:</b>	2865 bp
<b>OTI Disclaimer:</b>	The molecular sequence of this clone aligns with the gene accession number as a point of reference only. However, individual transcript sequences of the same gene can differ through naturally occurring variations (e.g. polymorphisms), each with its own valid existence. This clone is substantially in agreement with the reference, but a complete review of all prevailing variants is recommended prior to use. <a href="#">More info</a>
<b>OTI Annotation:</b>	This clone was engineered to express the complete ORF with an expression tag. Expression varies depending on the nature of the gene.
<b>Components:</b>	The ORF clone is ion-exchange column purified and shipped in a 2D barcoded Matrix tube containing 10ug of transfection-ready, dried plasmid DNA (reconstitute with 100 ul of water).
<b>Reconstitution Method:</b>	<ol style="list-style-type: none"><li>1. Centrifuge at 5,000xg for 5min.</li><li>2. Carefully open the tube and add 100ul of sterile water to dissolve the DNA.</li><li>3. Close the tube and incubate for 10 minutes at room temperature.</li><li>4. Briefly vortex the tube and then do a quick spin (less than 5000xg) to concentrate the liquid at the bottom.</li><li>5. Store the suspended plasmid at -20°C. The DNA is stable for at least one year from date of shipping when stored at -20°C.</li></ol>
<b>RefSeq:</b>	<a href="#">NM_003741.3</a>
<b>RefSeq Size:</b>	3547 bp
<b>RefSeq ORF:</b>	2868 bp
<b>Locus ID:</b>	8646
<b>UniProt ID:</b>	<a href="#">Q9H2X0</a>
<b>Cytogenetics:</b>	3q27.1
<b>Protein Families:</b>	Secreted Protein
<b>Protein Pathways:</b>	TGF-beta signaling pathway
<b>MW:</b>	102 kDa
<b>Gene Summary:</b>	This gene encodes a secreted protein that dorsalizes early vertebrate embryonic tissues by binding to ventralizing TGF-beta-like bone morphogenetic proteins and sequestering them in latent complexes. The encoded protein may also have roles in organogenesis and during adulthood. It has been suggested that this gene could be a candidate gene for Cornelia de Lange syndrome. Reduced expression of this gene results in enhanced bone regeneration. Alternative splicing results in multiple transcript variants. Other alternative splice variants have been described but their full length sequence has not been determined. [provided by RefSeq, Jan 2015]

Product images:



Circular map for RC220793



Western blot validation of overexpression lysate (Cat# [LY418466]) using anti-DDK antibody (Cat# [TA50011-100]). Left: Cell lysates from untransfected HEK293T cells; Right: Cell lysates from HEK293T cells transfected with RC220793 using transfection reagent MegaTran 2.0 (Cat# [TT210002]).