

Product datasheet for **RC220786**

MMP20 (NM_004771) Human Tagged ORF Clone

Product data:

Product Type:	Expression Plasmids
Product Name:	MMP20 (NM_004771) Human Tagged ORF Clone
Tag:	Myc-DDK
Symbol:	MMP20
Synonyms:	A12A2; MMP-20
Mammalian Cell Selection:	Neomycin
Vector:	pCMV6-Entry (PS100001)
E. coli Selection:	Kanamycin (25 ug/mL)



[View online »](#)

ORF Nucleotide Sequence:

>RC220786 representing NM_004771
 Red=Cloning site Blue=ORF Green=Tags(s)

TTTTGTAATACGACTCACTATAGGGCGGCCGGAATTCGTCGACTGGATCCGGTACCGAGGAGATCTGCC
 GCC**CGGATCGCC**

ATGAAGGTGCTCCCTGCATCTGGCCTTGTGTCTTCTCATCATGGCTTTGAAGTTTTCCAATGCAGCCC
 CCTCCCTAGTTGCAGCCTCCCCAGGACCTGGAGGAACAACCTACCGCCTCGCACAGGCGTATCTTGACAA
 ATATTACACAAAATAAAGAAGGACACCAGATTGGTGAGATGGTTGCAAGAGGAAGCAATCCATGATAAGG
 AAGATTAAGGAGCTACAAGCGTTCTTTGGCCTCCAAGTACCGGGAAGTTAGACCAGACCACAATGAACG
 TGATCAAGAAGCCTCGTGTGGAGTTCTGATGTGGCCAATTATCGCCTTCCCTGGTGAACCCAAATG
 GAAAAAATACTTTGACATACAGAATATCTAAATACACACCTTCCATGAGTTCTGTGAGGTGGACAAA
 GCAGTGGAGATGGCCTTGACGGCTGGAGTAGCGCCGTCCTCTGAGCTTGTGAGAATAAACTCAGGAG
 AAGCGGATATTATGATATCTTTGAAAAATGGAGATCACGGGGATTCTATCCATTCGATGGGCTCGGGG
 GACTCTAGCCCATGCATTTGCTCCTGGAGAAGGCTGGGAGGAGATACACATTCGACAATGCTGAGAAG
 TGGACTATGGGAACGAATGGTTTTAATTTGTTTACCGTTGCTGCTCATGAATTTGGCCATGCCCTGGGCC
 TGGCCATTCCACAGACCATCAGCACTGATGTACCCAATTATAAGTACAAGAATCCCTATGGATTCCA
 CCTCCCCAAAGATGATGTGAAAGGGATCCAGGCATTATACGGACCTCGGAAAGTATTCCTGGGGAAGCCC
 ACTCTGCCCATGCCCCCATCACAGCCATCCATCCCTGACCTCTGTGACTCCAGCTCATCCTTTGACG
 CTGTGACAATGCTGGGGAAGGAGCTCCTGCTCTCAAGGACCGGATTTCTGGAGACGGCAGGTTCACTT
 GCGGACAGGAATTCGGCCAGCACTATTACCAGCTCCTCCCCAGCTCATGTCCAATGTGGATGCAGCT
 TACGAAGTGGCTGAGAGGGCACTGCTTACTTCTCAAAGTCCCCTACTGGATAACAAGAGGATTCC
 AAATGCAAGTCTCCTCGGACTATTTATGACTTTGGATTTCGAAGGCAGTGCAGCAAAATAGATGCTGC
 TGTCTACCTCAGGAGCCACAGAAGACCCTTTCTTTGTTGGAGATGAATACTACAGCTACGACGAAAGG
 AAAAGGAAAAATGAAAAAGACTATCCAAGAATACTGAAGAAGATTTTCAGGAGTAAATGGCCAAATCG
 ATGCTGCTGTAGAATTAATGGCTACATTTACTTCTTTTCAGGACCAAAAACATACAAGTATGACACAGA
 GAAGGAAGATGTGGTTAGTGTGGTGAATCTAGTTCCTGGATTGGTTGC

ACGCGTACGCGGCCGCTCGAGCAGAAACTCATCTCAGAAGAGGATCTGGCAGCAATGATATCCTGGATT
 ACAAGGATGACGACGATAAGGTTTAA

Protein Sequence:

>RC220786 representing NM_004771
 Red=Cloning site Green=Tags(s)

MKVLPAAGLAVFLIMALKFSTAAPSLVAASPRTRWRNNYRLAQAYLDKYYTNKEGHQIGEMVARGSNMIR
 KIKELQAFFGLQVTGKLDQTTMNVIKKPRCGVPDVANYRLFPGEPKWKKNLTYRISKYTPSMSSVEVDK
 AVEMALQAWSSAVPLSFVRINSGEADIMISFENGDHGDSYPPFDGPRGTLAHAFAPGEGGGDTHFDNAEK
 WTMGTNGFNLFTVAHEFGHALGLAHSTDPALMYPTYKYKNPYGFHLPKDDVKGIQALYGRKVFLLGKP
 TLPAPHHKPSIPDLCDSSSFDAVMTLKGELLLFKDRIFWRRQVHLRTGIRPSTITSSFPQLMSNVDA
 YEVAERGTAYFFKGPYWI TRGFQMQGPPRTIYDFGPRHVQQIDAAYLREPQKTLFFVDEYYSYDER
 KRKMEKDYPKNTSEEFSGVNGQIDA AVELNGYIYFFSGPKTYKYDTEKEDVVSVVKSSSWIGC

TRTRPLEQKLI SEEDLAANDILDYKDDDDKV

Chromatograms:

https://cdn.origene.com/chromatograms/mk6272_a06.zip

Restriction Sites:

Sgfl-MluI

Cloning Scheme:


ACCN: NM_004771

ORF Size: 1449 bp

OTI Disclaimer: The molecular sequence of this clone aligns with the gene accession number as a point of reference only. However, individual transcript sequences of the same gene can differ through naturally occurring variations (e.g. polymorphisms), each with its own valid existence. This clone is substantially in agreement with the reference, but a complete review of all prevailing variants is recommended prior to use. [More info](#)

OTI Annotation: This clone was engineered to express the complete ORF with an expression tag. Expression varies depending on the nature of the gene.

Components: The ORF clone is ion-exchange column purified and shipped in a 2D barcoded Matrix tube containing 10ug of transfection-ready, dried plasmid DNA (reconstitute with 100 ul of water).

- Reconstitution Method:**
1. Centrifuge at 5,000xg for 5min.
 2. Carefully open the tube and add 100ul of sterile water to dissolve the DNA.
 3. Close the tube and incubate for 10 minutes at room temperature.
 4. Briefly vortex the tube and then do a quick spin (less than 5000xg) to concentrate the liquid at the bottom.
 5. Store the suspended plasmid at -20°C. The DNA is stable for at least one year from date of shipping when stored at -20°C.

RefSeq: [NM_004771.4](#)

RefSeq Size: 1956 bp

RefSeq ORF: 1452 bp

Locus ID: 9313

UniProt ID: [O60882](#)

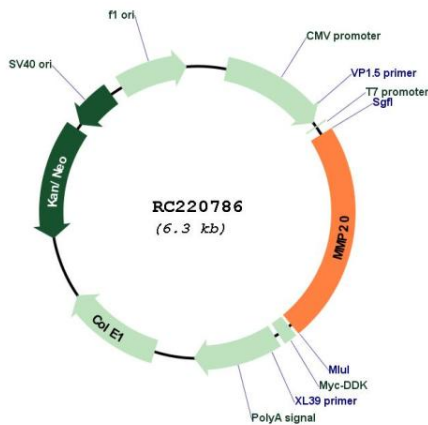
Cytogenetics: 11q22.2

Protein Families: Druggable Genome, Secreted Protein, Transmembrane

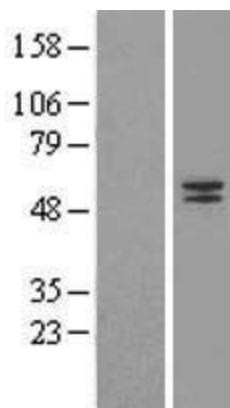
MW: 54.39 kDa

Gene Summary: Proteins of the matrix metalloproteinase (MMP) family are involved in the breakdown of extracellular matrix in normal physiological processes, such as embryonic development, reproduction, and tissue remodeling, as well as in disease processes, such as arthritis and metastasis. Most MMP's are secreted as inactive proproteins which are activated when cleaved by extracellular proteinases. The protein encoded by this gene degrades amelogenin, the major protein component of dental enamel matrix, and thus thought to play a role in tooth enamel formation. A mutation in this gene, which alters the normal splice pattern and results in premature termination of the encoded protein, has been associated with amelogenesis imperfecta. This gene is part of a cluster of MMP genes located on chromosome 11q22.3. [provided by RefSeq, Aug 2011]

Product images:



Circular map for RC220786



Western blot validation of overexpression lysate (Cat# [LY417767]) using anti-DDK antibody (Cat# [TA50011-100]). Left: Cell lysates from untransfected HEK293T cells; Right: Cell lysates from HEK293T cells transfected with RC220786 using transfection reagent MegaTran 2.0 (Cat# [TT210002]).