

Product datasheet for **RC220783**

PGEA1 (CBY1) (NM_015373) Human Tagged ORF Clone

Product data:

Product Type: Expression Plasmids
Product Name: PGEA1 (CBY1) (NM_015373) Human Tagged ORF Clone
Tag: Myc-DDK
Symbol: PGEA1
Synonyms: arb1; C22orf2; CBY; Chibby1; HS508I15A; PGEA1; PIGEA-14; PIGEA14
Mammalian Cell Selection: Neomycin
Vector: pCMV6-Entry (PS100001)
E. coli Selection: Kanamycin (25 ug/mL)
ORF Nucleotide Sequence: >RC220783 representing NM_015373
Red=Cloning site Blue=ORF Green=Tags(s)

TTTTGTAATACGACTCACTATAGGGCGGCCGGAATTCGTCGACTGGATCCGGTACCGAGGAGATCTGCC
GCC**CGGATCGCC**

ATGCCTTTCTTTGGGAATACGTTTCAGTCCGAAGAAGACACCTCCTCGGAAGTCGGCATCTCTCTCCAACC
TGCATTCTTTGGATCGATCAACCCGGGAGGTGGAGCTGGGCTTGGAAATACGGATCCCCGACTATGAACCT
GGCAGGGCAAAGCCTGAAGTTTAAAAATGGCCAGTGGATAGCAGAGACAGGGGTTAGTGGCGGTGTGGAC
CGGAGGGAGGTTACGCGCTTCGCAGGCGGAACCAGCAGTTGGAGGAAGAGAACAATCTCTTGGCGCTGA
AAGTGGACATCTTATTAGACATGCTTTTCAGAGTCCACTGCTGAATCCCCTTAATGGAGAAGGAAGTGA
TGAAGTGGAGGATCAGCCGGAAGAAAA

AG**CGGACCG**ACGCGTACGCGGCCGCTCGAGCAGAACTCATCTCAGAAGAGGATCTGGCAGCAAATGATATCC
TGGATTACAAGGATGACGACGATAAGGTTTAA

Protein Sequence: >RC220783 representing NM_015373
Red=Cloning site Green=Tags(s)

MPFFGNTFSPKKTPPRKSASLSNLHSLDRSTREVELGLEYGSPMTMLAGQSLKFENGQWIAETGVSGGVD
RREVRQLRRRNQLEENLRLKVDILLDMLSESTAESHLMKELDELRI SRKRK

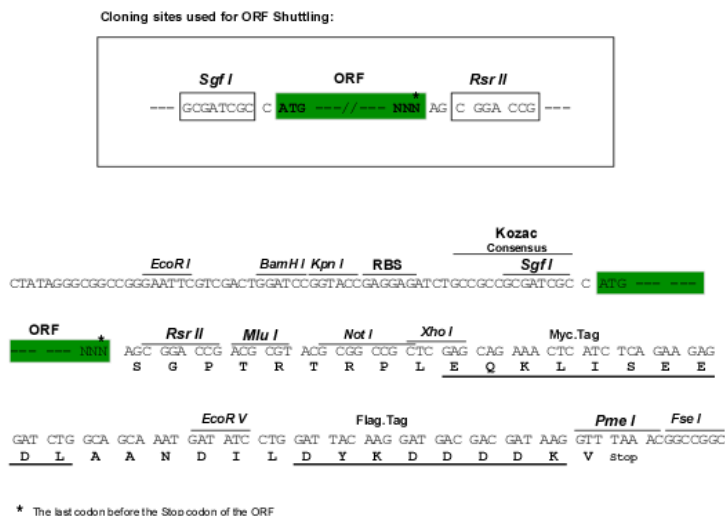
SGPTRRRLEQKLISEEDLAANDILDYKDDDDKV

Chromatograms: https://cdn.origene.com/chromatograms/mk6801_d04.zip

Restriction Sites: SgfI-RsrII



[View online »](#)

Cloning Scheme:


ACCN: NM_015373

ORF Size: 378 bp

OTI Disclaimer: The molecular sequence of this clone aligns with the gene accession number as a point of reference only. However, individual transcript sequences of the same gene can differ through naturally occurring variations (e.g. polymorphisms), each with its own valid existence. This clone is substantially in agreement with the reference, but a complete review of all prevailing variants is recommended prior to use. [More info](#)

OTI Annotation: This clone was engineered to express the complete ORF with an expression tag. Expression varies depending on the nature of the gene.

Components: The ORF clone is ion-exchange column purified and shipped in a 2D barcoded Matrix tube containing 10ug of transfection-ready, dried plasmid DNA (reconstitute with 100 ul of water).

Reconstitution Method:

1. Centrifuge at 5,000xg for 5min.
2. Carefully open the tube and add 100ul of sterile water to dissolve the DNA.
3. Close the tube and incubate for 10 minutes at room temperature.
4. Briefly vortex the tube and then do a quick spin (less than 5000xg) to concentrate the liquid at the bottom.
5. Store the suspended plasmid at -20°C. The DNA is stable for at least one year from date of shipping when stored at -20°C.

RefSeq: [NM_015373.3](#), [NP_056188.1](#)

RefSeq Size: 1147 bp

RefSeq ORF: 381 bp

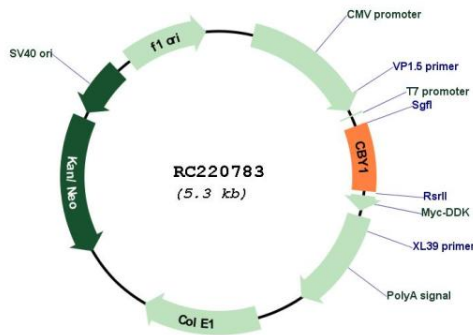
Locus ID: 25776

UniProt ID: [Q9Y3M2](#)

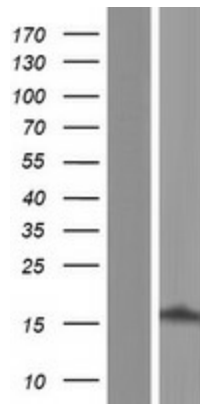
Cytogenetics: 22q13.1
Protein Families: Transcription Factors
MW: 14.3 kDa

Gene Summary: Beta-catenin is a transcriptional activator and oncoprotein involved in the development of several cancers. The protein encoded by this gene interacts directly with the C-terminal region of beta-catenin, inhibiting oncogenic beta-catenin-mediated transcriptional activation by competing with transcription factors for binding to beta-catenin. Two transcript variants encoding different isoforms have been found for this gene. [provided by RefSeq, Jul 2008]

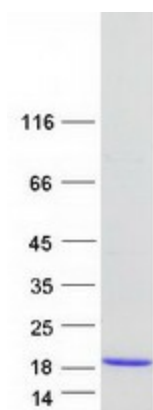
Product images:



Circular map for RC220783



Western blot validation of overexpression lysate (Cat# [LY414591]) using anti-DDK antibody (Cat# [TA50011-100]). Left: Cell lysates from untransfected HEK293T cells; Right: Cell lysates from HEK293T cells transfected with RC220783 using transfection reagent MegaTran 2.0 (Cat# [TT210002]).



Coomassie blue staining of purified CBY1 protein (Cat# [TP320783]). The protein was produced from HEK293T cells transfected with CBY1 cDNA clone (Cat# RC220783) using MegaTran 2.0 (Cat# [TT210002]).