

Product datasheet for **RC220777**

GSTCD (NM_024751) Human Tagged ORF Clone

Product data:

Product Type:	Expression Plasmids
Product Name:	GSTCD (NM_024751) Human Tagged ORF Clone
Tag:	Myc-DDK
Symbol:	GSTCD
Mammalian Cell Selection:	Neomycin
Vector:	pCMV6-Entry (PS100001)
E. coli Selection:	Kanamycin (25 ug/mL)



[View online »](#)

ORF Nucleotide Sequence:

>RC220777 representing NM_024751
 Red=Cloning site Blue=ORF Green=Tags(s)

TTTTGTAATACGACTCACTATAGGGCGGCCGGAATTCGTCGACTGGATCCGGTACCGAGGAGATCTGCC
 GCC**GCGATCGCC**

ATGAAAGCCATAAAGAAAAGTCTTACAGAAGAAGAATACCTGTACCTGGACTTTTCTCACCAACAGAAG
 GATGCATCTTTCCTTTCATACATCTGTAACCTTTATTTCTGTTATCTTACTGTGACTGTAAAATCTTTAA
 AATTTGCTTAGTTGTCACCAAAGAGGTTAGTCAGTGGACCAGGCTATGTGAACTCACCATCCCTTTGGCT
 ATTGAGAAATTTCTCAGAGAATCTTCTGACCAGCCCCAACTATACCTGTAGAAATACTACAGCTAGAGA
 AAAAGCTTAGTGAGCCTGTTAGAGTGCATAATGATGATAAACTCCGCAGGCAGAAGCTCAAGCAACAGAA
 GGCTGATGGAGTTGGCCTCCCCTTACTAAGGGAAAGGCAAAAGAGCAAGGTCCACACACAGGAAACATCT
 GAAGGGTTGGATTCTTCAAGAGTCTGGAAGTAAAGTGGCATTCTCAAAGCTCACAGTACAGGAAG
 AACCAGCTACTACCAACAGAGAGCCTTCTCACATCAGAAAAGCAAAGCCTCCGACCTTCCACCTCTGGA
 GCATGTGTTTGCAGAAGGCTTTACTTCACTCTGGCAGATATTGTCTTGGCCCTGTATCCATCATTTTC
 TTGGTAATTATCAGCAGGAAATTTCTGAGAAGCTGGTAGAATTTCCATTGCTAGCCTCTTGGTACCAGA
 GGATTCAGGAAGTGCCAGGAGTAAAAACAGCAGCTTCTAAGTGTGGGATCCAATTTCTCCATTTACCAAA
 GTTGTGACAACCTCAACTGAACAGCATCCAACTTATGTGAAGTCCCAGGTGTAGAAGAGCAAAGCGAT
 CCTTTATTTATAGGAGGACCAAGACCAACCATGGCCAAGTTAATGGAAAAGGGCATTGAAGTGTATTTTT
 CTCCCCACCCTTGGCCTACTTGGACTCTTGATTGGAATGTTCTCCCTGCAGCAGTCAGCCCAAAGGAAGG
 TAAATGTCCAGTGATCGAGCTTTGAGGAAGCAGCAACAGTTGAACAACCTTGTCTATGTGGTAAACAAAT
 CAGGCCAAACCTGGTGACAGAATTGTGGATTTCTGCAGCGTGGGGCCATGTTGGAATTGCTCTTGCTC
 ACATGTGCCATCATGTCAGGTTACATTAATAGAAAACAAGGAATTATCATTAAATTCGTGCTAAGAAGAG
 AAGTGATGAACTGGGTTTAAAGCAACATTTGGTTCAATCAAGCAAATATGGAATATTTTACTGGGATGTTT
 AATATTGGAGTAGCATTGCATGCTTGTGGAGTGGCAACAGACATGGTATTGAGCACTGTATCAAAACAC
 GGGCTTCTTCGTACATGCCCTTGCTGTTATGGTTTCATTCAGAACACCTCAAAGTTCAATTTTCCAAA
 AAGTGAACAATTCAGAAAACCTTATCATAACAAGGAACACATGATTCTGTGCAGATTTGCAGACCAGACA
 GCTGTCCAGTCCCACCCCAACGAAGGCTCATAGGAAAACAGTGCATGTGCTTGGTGGATCTGGATCGAG
 CAAGAGCTGCAGAAGAATGTGGATACTCCGTTCAAGTATATCCATGGAGCCAGAGAGCTGCTCTCCCAA
 AAATAACATGATTGTGGAGTCCCCATT

ACGCGTACGCGGCCGCTCGAGCAGAAACTCATCTCAGAAGAGGATCTGGCAGCAAATGATATCCTGGATT
 ACAAGGATGACGACGATAAGGTTTAA

Protein Sequence:

>RC220777 representing NM_024751
 Red=Cloning site Green=Tags(s)

MKAIKKSLTEEEYLDFSHQTEGCIPLHTSVTLFLLSYCDCKIFKICLVVTKEVSQWTRLCELTIPLA
 IENFLRESSDQPPTIPVEILQLEKKLSEPVRVHNDKLRQKQKQKADGVGPPLTKGKAKSKVHTQETS
 EGLDSSSKSLELKVAFSKLTVQEEPATTNREPSHIRKAKASDLPPLEHVFAEGLYFTLADIVLLPCIHHF
 LVIIISRFSEKLVEFPLLASWYQRIQEVPVKTAASKCGIQFLHLPKLLTSTEQHPNLCEVPGVEEQSD
 PLFIGGPRPTMAKLMKIEVMFSPHPCPTWTLWNLVPAAVSPKEGKMSSDRALRKQQQLNNLVYVVTN
 QAKPGDRIVDFCSGGHVGIVLAHMLPSCQVTLIENKELSLIRAKRSDELGLSNIWFIQANMEYFTGMF
 NIGVALHACGVATDMVIEHCIKTRASFVTCPCCYGFIQNTSKFNFPKSEQFKKTL SYKEHMILCRFADQT
 AVQLPPQRRLLIGKQCMCLVLDLRARAAEECGYSVQVISMEPESESPKNNMIVGVP I

TRTRPLEQKLISEEDLAANDILDYKDDDDKV

Chromatograms:

https://cdn.origene.com/chromatograms/mk8066_f04.zip

Restriction Sites:

Sgfl-Mlul

Cloning Scheme:


ACCN: NM_024751

ORF Size: 1638 bp

OTI Disclaimer: The molecular sequence of this clone aligns with the gene accession number as a point of reference only. However, individual transcript sequences of the same gene can differ through naturally occurring variations (e.g. polymorphisms), each with its own valid existence. This clone is substantially in agreement with the reference, but a complete review of all prevailing variants is recommended prior to use. [More info](#)

OTI Annotation: This clone was engineered to express the complete ORF with an expression tag. Expression varies depending on the nature of the gene.

Components: The ORF clone is ion-exchange column purified and shipped in a 2D barcoded Matrix tube containing 10ug of transfection-ready, dried plasmid DNA (reconstitute with 100 ul of water).

- Reconstitution Method:**
1. Centrifuge at 5,000xg for 5min.
 2. Carefully open the tube and add 100ul of sterile water to dissolve the DNA.
 3. Close the tube and incubate for 10 minutes at room temperature.
 4. Briefly vortex the tube and then do a quick spin (less than 5000xg) to concentrate the liquid at the bottom.
 5. Store the suspended plasmid at -20°C. The DNA is stable for at least one year from date of shipping when stored at -20°C.

RefSeq: [NM_024751.3](#), [NP_079027.2](#)

RefSeq Size: 4063 bp

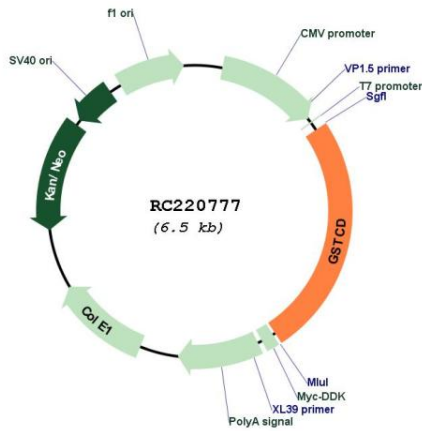
RefSeq ORF: 1641 bp

Locus ID: 79807

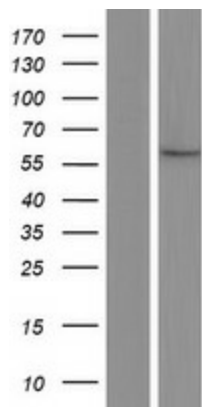
UniProt ID: [Q8NEC7](#)

Cytogenetics: 4q24
Protein Families: Druggable Genome
MW: 61.1 kDa

Product images:



Circular map for RC220777



Western blot validation of overexpression lysate (Cat# [LY411102]) using anti-DDK antibody (Cat# [TA50011-100]). Left: Cell lysates from untransfected HEK293T cells; Right: Cell lysates from HEK293T cells transfected with RC220777 using transfection reagent MegaTran 2.0 (Cat# [TT210002]).