

Product datasheet for **RC220773**

G protein regulated inducer of neurite outgrowth 2 (GPRIN2) (NM_014696) Human Tagged ORF Clone

Product data:

| | |
|---------------------------|--|
| Product Type: | Expression Plasmids |
| Product Name: | G protein regulated inducer of neurite outgrowth 2 (GPRIN2) (NM_014696) Human Tagged ORF Clone |
| Tag: | Myc-DDK |
| Symbol: | G protein regulated inducer of neurite outgrowth 2 |
| Synonyms: | GRIN2; KIAA0514 |
| Mammalian Cell Selection: | Neomycin |
| Vector: | pCMV6-Entry (PS100001) |
| E. coli Selection: | Kanamycin (25 ug/mL) |



[View online »](#)

ORF Nucleotide Sequence:

>RC220773 representing NM_014696
 Red=Cloning site Blue=ORF Green=Tags(s)

TTTTGTAATACGACTCACTATAGGGCGGCCGGGAATTCGTCGACTGGATCCGGTACCGAGGAGATCTGCC
 GCCGCGATCGCC

ATGAGCTCCAGCCGCCCCGAGCCGGTCCCTGGGCACCCCTGAGCCCCGCCTTACGCCCTGTCCAGA
 GCTCTTCCAGCCTGCTGGGTGAAGGCCGGGAACAGAGGCCAGAGCTCCACAAGACTGCCAGCAGCCAT
 GTGGCAGGCCAGCTGGGCGAGGCCAGCACCAGACCCAGGCCCGGAGGAAGAGGGGAACCCGCCTGAG
 AGCATGAAGCCAGCACGGGCTCTGGCCCAAGGCGGACCCAGTCTGGAGGCCACTGGCGGAGCAGCA
 CTGTGGGCAATGTGTCCACCATGGGCGGTGGTACCTTTGTGCTGCGGCCCCAGTGTCTGTCTAT
 GCAGAGGAGCCATTAGACCTGGTCCGTAGCACCAGATGCGGGGACACAGTGGTCTCGGAAGGCCAGT
 CTCAGTGTCTCAGCCCTGGCAGCAGCCCTGTCCACAGGGCTCAGCTGCAGCCAGGTGGTACTTCTGGCC
 AGGGTGGCCAGGCCCTGCAGCCCTGAAAGGGACCTGGCTCCTGAGGATGAGACTTCTAACTCAGCCTG
 GATGCTGGGGGCGAGTCAGTTGCGGTGCCACCTAGACCTGGGGGACACAACCTGCCACAGCAGCAGT
 GCCCAGGCTGAGCCAAAGCTGCTGAACAGCTGGTACCACCACCTGCCATGCTCTGCCCCAGCTGCTC
 TACTCTGTGGCATGAGGGAGATGAGGGAGTGGGGCTGGTGGCTGCTGCCATGCCCTACCTGCCACAGG
 GATCCTGGCCTTCCAAACTAGTGGCGTCAGTGAGCGAGTCTGGGCTGCAGGCTCAGCATGGGGTGAAG
 ATCCACTGTAGTTGCTGGGGGCTCCCTGGGCACTCCATTGCTGTGCCACCTTTGGGGTCCCCTG
 GGTTAGTCCCAGAGCCTGGCTCTAGGACCAAAGATGTGTGGACCATGACCTCAGCCAATGACTTGGCCCC
 TGCAGAGGCATCCCCGCTGTGAGCCAGGATGCTGGTGTGAGGCCGCCCCAGTGGCGGCTGCAAGGCT
 GTGGCCACCAGTCCGTCCTGGAAGCGCCTGCAGCCCTGCATGTGTTCCAGAGGTAACCTGGGGTCCA
 GCCTGGAGGAGGGCGCGTCCCCGTGCGGGATGTGCGATGGGATGCTGAGGGCATGACATGGGAGGTGA
 CCGAGCTGCGGTGGACCCGGAGGTGCTCGGTGTGGCCATCCAGAAGCACCTGGAGATGCAGTTTGAGCAG
 CTGCAGCGGGCGCCTGCCAGCGAGGACAGCCTGTCTGTGAGGGCCGGAGGGGGCCGCTGCGGGCTGTCA
 TGCAGTCCCTGCGGCGCCCCAGCTGCTGCGGCTGCTTGGCGCGGCCCCGAG

ACGCGTACGCGGCCGCTCGAGCAGAACTCATCTCAGAAGAGGATCTGGCAGCAAATGATATCCTGGATT
 ACAAGGATGACGACGATAAGGTTTAA

Protein Sequence:

>RC220773 representing NM_014696
 Red=Cloning site Green=Tags(s)

MSSSRPEPGPWAPLSPRLQPLSQSSSLLGEGREQRPELHKTASSTMWQAQLGEASTRPQAPPEEEGNPPE
 SMKPARASGPKARPSAGGHWRSSTVGNVSTMGGDLRLRAPSAAMQRSHSDLVRSTQMRGHSARKAS
 LSCSALGSSPVHRAQLQPGGTSQGQAPAGLERDLAPEDETSNSAWMLGASQLSVPLDLGDTTAHSSS
 AQAEPKAAEQLATTTCHALPPAALLCGMREMREVGAGGCCALPATGILAFPKLVASVSESLQAQHGK
 IHCRLSGGLPGHSHCCAHLWGPAGLVPEPGSRTKDVWMTSANDLAPAEASPLSAQDAGVQAAPVAACKA
 VATSPSLEAPAALHVFPEVTLGSSLEEAPSPVRDVRWDAEGMTWEVYGAADVPEVLGVAIQKHLEMQFEQ
 LQRAPASEDSLVEGRRGPLRAVMQSLRRPSCCGCSGAPE

TRTRPLEQKLISEEDLAANDILDYKDDDDKV

Chromatograms:

https://cdn.origene.com/chromatograms/mk6476_b05.zip

Restriction Sites:

Sgfl-Mlul

Cloning Scheme:



ACCN: NM_014696

ORF Size: 1383 bp

OTI Disclaimer: The molecular sequence of this clone aligns with the gene accession number as a point of reference only. However, individual transcript sequences of the same gene can differ through naturally occurring variations (e.g. polymorphisms), each with its own valid existence. This clone is substantially in agreement with the reference, but a complete review of all prevailing variants is recommended prior to use. [More info](#)

OTI Annotation: This clone was engineered to express the complete ORF with an expression tag. Expression varies depending on the nature of the gene.

Components: The ORF clone is ion-exchange column purified and shipped in a 2D barcoded Matrix tube containing 10ug of transfection-ready, dried plasmid DNA (reconstitute with 100 ul of water).

- Reconstitution Method:**
1. Centrifuge at 5,000xg for 5min.
 2. Carefully open the tube and add 100ul of sterile water to dissolve the DNA.
 3. Close the tube and incubate for 10 minutes at room temperature.
 4. Briefly vortex the tube and then do a quick spin (less than 5000xg) to concentrate the liquid at the bottom.
 5. Store the suspended plasmid at -20°C. The DNA is stable for at least one year from date of shipping when stored at -20°C.

RefSeq: [NM_014696.2](#), [NP_055511.1](#)

RefSeq Size: 1896 bp

RefSeq ORF: 1377 bp

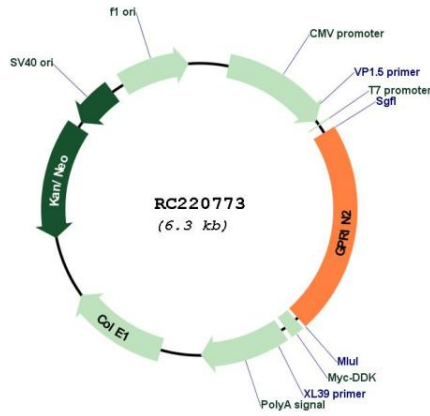
Locus ID: 9721

UniProt ID: [O60269](#)

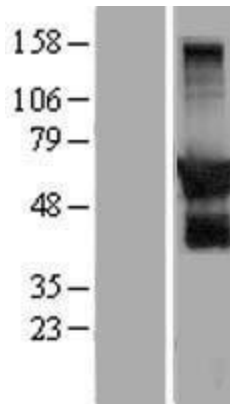
Cytogenetics: 10q11.22

Protein Families: Stem cell - Pluripotency
MW: 47.3 kDa
Gene Summary: May be involved in neurite outgrowth.[UniProtKB/Swiss-Prot Function]

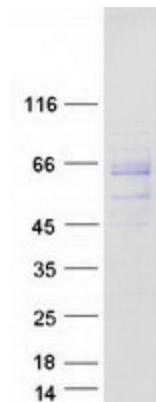
Product images:



Circular map for RC220773



Western blot validation of overexpression lysate (Cat# [LY415113]) using anti-DDK antibody (Cat# [TA50011-100]). Left: Cell lysates from untransfected HEK293T cells; Right: Cell lysates from HEK293T cells transfected with RC220773 using transfection reagent MegaTran 2.0 (Cat# [TT210002]).



Coomassie blue staining of purified GPRIN2 protein (Cat# [TP320773]). The protein was produced from HEK293T cells transfected with GPRIN2 cDNA clone (Cat# RC220773) using MegaTran 2.0 (Cat# [TT210002]).