

## Product datasheet for RC220767

### SETD3 (NM\_199123) Human Tagged ORF Clone

#### Product data:

Product Type:	Expression Plasmids
Product Name:	SETD3 (NM_199123) Human Tagged ORF Clone
Tag:	Myc-DDK
Symbol:	SETD3
Synonyms:	C14orf154; hSETD3
Mammalian Cell Selection:	Neomycin
Vector:	pCMV6-Entry (PS100001)
E. coli Selection:	Kanamycin (25 ug/mL)
ORF Nucleotide Sequence:	>RC220767 representing NM_199123 Red=Cloning site Blue=ORF Green=Tags(s)

TTTTGTAATACGACTCACTATAGGGCGCCGGGAATTCGTCGACTGGATCCGGTACCGAGGAGATCTGCC  
GCC**CGATCGCC**

ATGGGTAAGAAGAGTCGAGTAAAACTCAGAAATCTGGCACTGGTGCTACAGCAACTGTGTACCAAAGG  
AAATCTTGAACCTGACCAGTGAGCTGCTGCAGAAATGCAGCAGTCCGGCGCCTGGCCAGGAAAAGAGTG  
GGAAGAGTATGTGCAGATCCGGACTCTGGTTGAGAAAAACGGAAAAAGCAAAAAGGTCTGTCCGTACT  
TTTGATGAAAAAGAGAAGATTCTTCTGATCTAATGAAATGGCCTCTGAAAATGGGCTTCTGTGC  
AGGTTTTGAAATGGTTAACTTCAAAGAAGAGGGCTTTGGTTTGAGAGCAACAAGAGATATCAAGGCAGA  
AGAATTGTTTTATGGGTTCCACGAAAATTGCTAATGACTGTTGAATCTGCTAAAAATTCAGTGTTGGGG  
CCCTTATATTCTCAAGACCGAATCCTTCAAGCCATGGGAAACATCGCACTGGCCTTTCATTTGCTGTGTG  
AGCGAGCCAGCCCTAACTCCTTCTGGCAGCCCTATATTCAAACCCTCCCCAGTGAATATGACACTCCTCT  
CTACTTTGAAGAAGATGAAGTTCGGTATCTTCAGTCCACACAAGCTATACATGATGTCTTCAGCCAGTAT  
AAAAACACAGCTCGACAGTACGCCTACTTCTATAAAGTCATCCAGACCCATCCTCATGCCAACAACTAC  
CCTTGAAGGATCTTTCACCTACGAGGACTACAGGTGGGCAGTCTCTTCTGTTATGACGAGGCAAAACCA  
AATTCACAGAGGATGGTTCGCGGTGACCCTGGCTCTGATTCCTTTATGGGATATGTGAACACACC  
AACGGCCTGACACCAGAAGATTCTTCTGCTCTTGCTGTGCGCTCTGCC

**ACGCGT**ACGCGGCCGCTCGAGCAGAAACTCATCTCAGAAGAGGATCTGGCAGCAAATGATATCCTGGATT  
ACAAGGATGACGACGATAAGGTTTAA



[View online »](#)

**Protein Sequence:** >RC220767 representing NM\_199123  
Red=Cloning site Green=Tags(s)

MGKKSrvkTQKSGTGATVSPKEILNLTSELLQKCSSPAPGPGKEWEEYVQIRTLVEKIRKKQKGLSVT  
 FDGKREDYFPDLMKwasengASVEGFEMVNFKEEGFLRATRDIKAEELFLWVPRKLLMTVESAKNSVLG  
 PLYSQDRILQAMGNIALAFHLLCERASPNsFWQPYIQTLPSEYDTPLYFEEDevRYLQSTQAIHDVFSQY  
 KNTARQYAYFYKVIQTHPHANKLPLKDSFTYEDYRWAVSSVMTRQNQIPTEDGSRVTLAL IPLWDMCNHT  
 NGLTPEDSFALAVASA

TRTRPLEQKLISEEDLAANDILDYKDDDDKV

**Chromatograms:** [https://cdn.origene.com/chromatograms/mk8050\\_c06.zip](https://cdn.origene.com/chromatograms/mk8050_c06.zip)

**Restriction Sites:** SgfI-MluI

**Cloning Scheme:**



**ACCN:** NM\_199123

**ORF Size:** 888 bp

**OTI Disclaimer:** The molecular sequence of this clone aligns with the gene accession number as a point of reference only. However, individual transcript sequences of the same gene can differ through naturally occurring variations (e.g. polymorphisms), each with its own valid existence. This clone is substantially in agreement with the reference, but a complete review of all prevailing variants is recommended prior to use. [More info](#)

**OTI Annotation:** This clone was engineered to express the complete ORF with an expression tag. Expression varies depending on the nature of the gene.

**Components:** The ORF clone is ion-exchange column purified and shipped in a 2D barcoded Matrix tube containing 10ug of transfection-ready, dried plasmid DNA (reconstitute with 100 ul of water).

**Reconstitution Method:**

1. Centrifuge at 5,000xg for 5min.
2. Carefully open the tube and add 100ul of sterile water to dissolve the DNA.
3. Close the tube and incubate for 10 minutes at room temperature.
4. Briefly vortex the tube and then do a quick spin (less than 5000xg) to concentrate the liquid at the bottom.
5. Store the suspended plasmid at -20°C. The DNA is stable for at least one year from date of shipping when stored at -20°C.

**RefSeq:** [NM\\_199123.2](#)

**RefSeq Size:** 1441 bp

**RefSeq ORF:** 891 bp

**Locus ID:** 84193

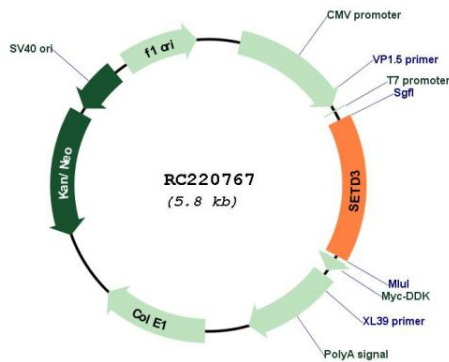
**UniProt ID:** [Q86TU7](#)

**Cytogenetics:** 14q32.2

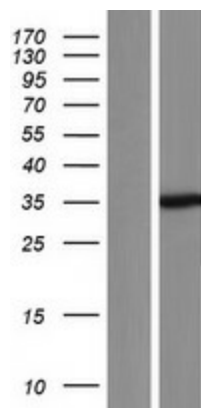
**MW:** 33.5 kDa

**Gene Summary:** Protein-histidine N-methyltransferase that specifically mediates methylation of actin at 'His-73' (PubMed:30526847, PubMed:30626964, PubMed:30785395). Histidine methylation of actin is required for smooth muscle contraction of the laboring uterus during delivery (PubMed:30626964). Does not have protein-lysine N-methyltransferase activity and probably only catalyzes histidine methylation of actin (PubMed:30626964, PubMed:30785395). [UniProtKB/Swiss-Prot Function]

**Product images:**



Circular map for RC220767



Western blot validation of overexpression lysate (Cat# [LY404739]) using anti-DDK antibody (Cat# [TA50011-100]). Left: Cell lysates from untransfected HEK293T cells; Right: Cell lysates from HEK293T cells transfected with RC220767 using transfection reagent MegaTran 2.0 (Cat# [TT210002]).