

Product datasheet for RC220766

TP53I11 (NM_001076787) Human Tagged ORF Clone

Product data:

Product Type: Expression Plasmids
Product Name: TP53I11 (NM_001076787) Human Tagged ORF Clone
Tag: Myc-DDK
Symbol: TP53I11
Synonyms: PIG11
Mammalian Cell Selection: Neomycin
Vector: pCMV6-Entry (PS100001)
E. coli Selection: Kanamycin (25 ug/mL)
ORF Nucleotide Sequence: >RC220766 ORF sequence
 Red=Cloning site Blue=ORF Green=Tags(s)

TTTTGTAATACGACTCACTATAGGGCGGCCGGAATTCGTCGACTGGATCCGGTACCGAGGAGATCTGCC
 GCCCGCATCGCC

ATGGCGGCCAAGCAGCCCCGCCTCTGATGAAGAAGCACAGCCAGACGGACCTCGTGAGCCGCCTGAAGA
 CCCGCAAGATCCTCGGCGTGGGCGGGGAGGATGACGACGGGGAGGTGCATCGCTCCAAGATCAGCCAGGT
 CTTAGGCAATGAAATCAAGTTTACCATTTCGGGAGCCTTTGGGGCTCAGGGTCTGGCAGTTCGCTCTGCT
 GTGCTCTTCTCCGGCATTGCCATCATGGCGCTTGCCTTCCCTGACCAGCTCTATGATGCGGTCTTTGATG
 GAGCCCAGGTGACCAGCAAGACCCCATCCGCCTCTACGGCGGTGCCCTCCTCAGCATCTCCCTGATCAT
 GTGGAACGCTCTTACACGGCTGAGAAGGTCATCATTTCGATGGACCCTGCTCACCGAAGCTTGCTATTTT
 GGGTCCAGTTCTTGGTGGTCACTGCCACGCTAGCTGAGACGGGCTCATGTCCCTGGGGATCCTGCTGC
 TCCTGGTCAGCCGCTCCTTTTTGTCGTCATCAGCATTTACTACTATTACCAAGTCGGCCGAAGACCCAA
 GAAGGCC

ACGCGTACGCGGCCGCTCGAGCAGAACTCATCTCAGAAGAGGATCTGGCAGCAATGATATCCTGGATT
 ACAAGGATGACGACGATAAGGTTTAA

Protein Sequence: >RC220766 protein sequence
 Red=Cloning site Green=Tags(s)

MAAKQPPLMKKHSQTDLVSRLKTRKILGVGEDDDGEVHRKISQVLGNEIKFTIREPLGLRVWQFVSA
 VLFSGIAIMALAFPDQLYDAVFDGAQVTSKTPIRLYGGALLSISLIMWNALYAEKVIIRWTLTEACYF
 GVQFLVVTATLAETGLMSLGILLLLVSRLLFVVISIYYYYYQVGRRPKKA

TRTRPLEQKLISEEDLAANDILDYKDDDDKV

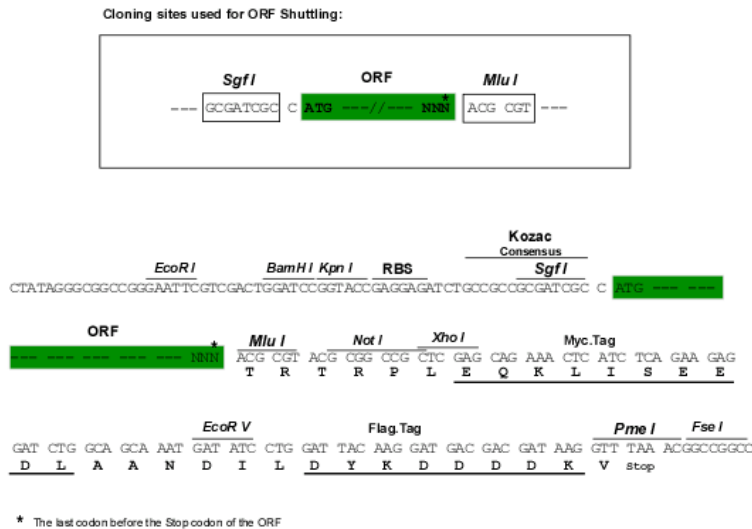


[View online »](#)

Chromatograms: https://cdn.origene.com/chromatograms/mk6365_c07.zip

Restriction Sites: SgfI-MluI

Cloning Scheme:



ACCN: NM_001076787

ORF Size: 567 bp

OTI Disclaimer: The molecular sequence of this clone aligns with the gene accession number as a point of reference only. However, individual transcript sequences of the same gene can differ through naturally occurring variations (e.g. polymorphisms), each with its own valid existence. This clone is substantially in agreement with the reference, but a complete review of all prevailing variants is recommended prior to use. [More info](#)

OTI Annotation: This clone was engineered to express the complete ORF with an expression tag. Expression varies depending on the nature of the gene.

Components: The ORF clone is ion-exchange column purified and shipped in a 2D barcoded Matrix tube containing 10ug of transfection-ready, dried plasmid DNA (reconstitute with 100 ul of water).

Reconstitution Method:

1. Centrifuge at 5,000xg for 5min.
2. Carefully open the tube and add 100ul of sterile water to dissolve the DNA.
3. Close the tube and incubate for 10 minutes at room temperature.
4. Briefly vortex the tube and then do a quick spin (less than 5000xg) to concentrate the liquid at the bottom.
5. Store the suspended plasmid at -20°C. The DNA is stable for at least one year from date of shipping when stored at -20°C.

RefSeq: [NM_001076787.1](#), [NP_001070255.1](#)

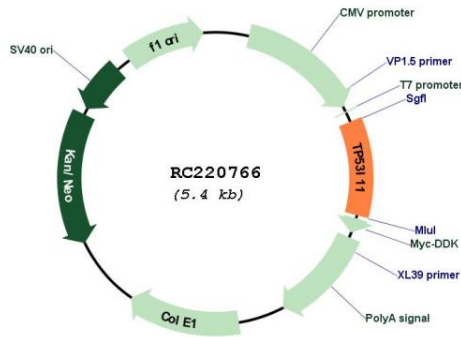
RefSeq Size: 3648 bp

RefSeq ORF: 569 bp

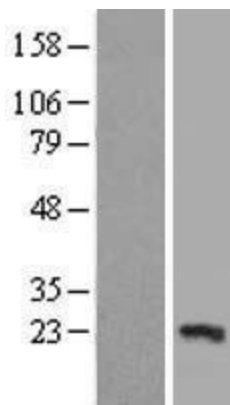
Locus ID: 9537

Cytogenetics: 11p11.2
 Protein Families: Druggable Genome, Transmembrane
 MW: 21.1 kDa

Product images:



Circular map for RC220766



Western blot validation of overexpression lysate (Cat# [LY421367]) using anti-DDK antibody (Cat# [TA50011-100]). Left: Cell lysates from untransfected HEK293T cells; Right: Cell lysates from HEK293T cells transfected with RC220766 using transfection reagent MegaTran 2.0 (Cat# [TT210002]).