

Product datasheet for **RC220761**

FBXW12 (NM_207102) Human Tagged ORF Clone

Product data:

Product Type:	Expression Plasmids
Product Name:	FBXW12 (NM_207102) Human Tagged ORF Clone
Tag:	Myc-DDK
Symbol:	FBXW12
Synonyms:	FBW12; FBXO12; FBXO35
Mammalian Cell Selection:	Neomycin
Vector:	pCMV6-Entry (PS100001)
E. coli Selection:	Kanamycin (25 ug/mL)



[View online »](#)

ORF Nucleotide Sequence:

>RC220761 representing NM_207102
 Red=Cloning site Blue=ORF Green=Tags(s)

TTTTGTAATACGACTCACTATAGGGCGGCCGGAATTCGTCGACTGGATCCGGTACCGAGGAGATCTGCC
 GCC**CGCATCGCC**

ATGGAGATCCGATTGCCTGACTTAGCTTTGAAGCGAATCTTCTTTCTGGACCTGTTCCGCTTGCTGC
 AGGTTTCCAGGTGAACAAGCATTGGAATAGGATTGCAGACAGTATTACCTGTGGAGGTCACTATCTCT
 GCAGAGATGGGACTGCAGCAACTTCACCAATCAACACCTGGGCACACACACATGGAAGCAATTTTCTG
 CATCAAAGAAGGAAGGAGCTTCGGTTGGCATTGGCACAGCCGCATAAATTATCTACAAAGTAACAAAGA
 ACATCGCATTTGAGACGGAGTTGGCTTATCTCTCAGGAAATAGACTTACAGTGGATGAACAGGAGAAATC
 AATCATTTGTAGTGTATCTCAAAGCAAGACTTTGTGCCTGGGATGTGCAAGAGGGTACCATGATCTGG
 TCAAGCCCAGTCCAGGAGTTCATTTCTCAAATCTGGTAAACCCTCCCTCAGATGCATCTCGCCATCACTA
 TGGATCGGAAAAAACTATCAAAGTGTGGAAGTGTGAGCAGGGACGCTCTGGCTGTTCTCCCATGCC
 ACAGCCCTGTTATTGCATGGAAGCCTATCTTACAAGGATGGCCATTCTGATGGTTGGCGATGCTGCA
 GGTGACATCTACACATTTACACTGCCTGGGTTAAGAGATGTTTCTAAAGTACTGCATTTCAATATGGTA
 TTGACTTCTACACTGCTCCTGACAAGAAATGGGTATTTGCATGTGGGACATACAGTCGTACCTTGCC
 ACAGGTATTCCTCACAGAGTCTTACTGAGACCATCAGAAGGCAGTGATCCTCTGTCTACCTTTCTCCCA
 CATAAATTATGTGCCAGCGCCTGCTGGACCCCAAGGTGAAAAACAGGATAACACTGATGTCCCAAAGTA
 GCACTGGAAAAAAGACAGAATTTATCACCTTGATCTACCAACCAAGAAGACTGGAGGCCAAACAGTCAT
 CCAAGCATATGAGATCGCAAGTTCCAGGTGGCAGCTCATCTGAAGTGCCTATCTGGATGGGAGCCAGT
 GATGGATATATGATTGTCTTTACCAGTGGACCATACTTGTACTCTTACGATCACTGGCTTCTGCTGC
 AACGATTTGAGGACCATCAGGCAGCCATCAACAACCTCTGGGTGGATCCTTGCTATGTGTCACCCATC
 CGAGAACTCTGTGCACGTGTACATGTGGGAAGAAGGAGGCCCATCCATACCTCAGGAGCTGTGTCTAC
 CTGGAAAAACAGTGGCATGATCACACAACAGACAGCTGCATCTCCAGTGTGATGTGTGATATGCAAGCA
 TAGTACTTAGGGTGAAGAAAGTAAGTGACTCCAGCATTCTGGTGTGATTCTTTGAATACG

ACGCGTACGCGGCCGCTCGAGCAGAAACTCATCTCAGAAGAGGATCTGGCAGCAATGATATCCTGGATT
 ACAAGGATGACGACGATAAGGTTTAA

Protein Sequence:

>RC220761 representing NM_207102
 Red=Cloning site Green=Tags(s)

MEIRLPDLALKRIFSFLDLFGLLQVSQVNKHWNRIADSDYLWRSLSLQRWDCSNFTNQHLGTHTWKQFFL
 HQRRELRLALAQPHNF IYKVTKNIAFETELAYLSGNRLTVDEQEKSIIICSVSPKQELCAWDVQEGTMIW
 SSPVQEFHFSNLVTL PQMHLAITMDRKKTIKVWNCQDRDALAVLPMPQPCYCMEAYLTKDGPFLMVGDA
 GDYITFTLPLGRDYSKVTAFQYIVLLHCSPPDKKWFACGTYSRTLTPQVFLTESLLRPSEGSDDLSTFLP
 HKLCASACWTPKVNRITLMSQSSTGKTEFITFDLPTKKTGGQTVIQAYEIASFQVAHLKCPIMMGAS
 DGYMIVFTSGPYLLLFSITGFLLRQFEDHQAAINNFWDPCYVLTTSSENSVHVYMWEEGGRHPYLRSCCH
 LENTWHDHTDSCISSVMCDNASIVLRVRKVS DSSILVMYSLNT

TRTRPLEQKLISEEDLAANDILDYKDDDDKV

Chromatograms:

https://cdn.origene.com/chromatograms/mk6733_b12.zip

Restriction Sites:

Sgfl-Mlul

Cloning Scheme:


ACCN: NM_207102

ORF Size: 1392 bp

OTI Disclaimer: The molecular sequence of this clone aligns with the gene accession number as a point of reference only. However, individual transcript sequences of the same gene can differ through naturally occurring variations (e.g. polymorphisms), each with its own valid existence. This clone is substantially in agreement with the reference, but a complete review of all prevailing variants is recommended prior to use. [More info](#)

OTI Annotation: This clone was engineered to express the complete ORF with an expression tag. Expression varies depending on the nature of the gene.

Components: The ORF clone is ion-exchange column purified and shipped in a 2D barcoded Matrix tube containing 10ug of transfection-ready, dried plasmid DNA (reconstitute with 100 ul of water).

- Reconstitution Method:**
1. Centrifuge at 5,000xg for 5min.
 2. Carefully open the tube and add 100ul of sterile water to dissolve the DNA.
 3. Close the tube and incubate for 10 minutes at room temperature.
 4. Briefly vortex the tube and then do a quick spin (less than 5000xg) to concentrate the liquid at the bottom.
 5. Store the suspended plasmid at -20°C. The DNA is stable for at least one year from date of shipping when stored at -20°C.

RefSeq: [NM_207102.1](#), [NP_996985.1](#)

RefSeq Size: 1647 bp

RefSeq ORF: 1395 bp

Locus ID: 285231

UniProt ID: [Q6X9E4](#)

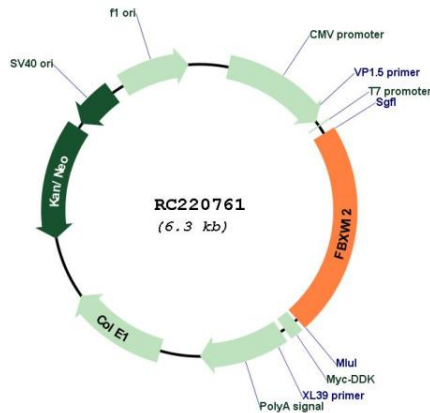
Cytogenetics: 3p21.31

Protein Families: Druggable Genome

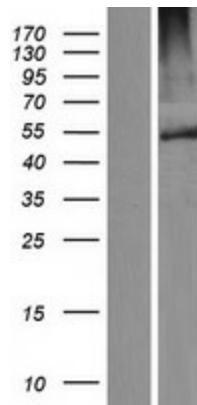
MW: 52.9 kDa

Gene Summary: Members of the F-box protein family, such as FBXW12, are characterized by an approximately 40-amino acid F-box motif. SCF complexes, formed by SKP1 (MIM 601434), cullin (see CUL1; MIM 603034), and F-box proteins, act as protein-ubiquitin ligases. F-box proteins interact with SKP1 through the F box, and they interact with ubiquitination targets through other protein interaction domains (Jin et al., 2004 [PubMed 15520277]).[supplied by OMIM, Mar 2008]

Product images:



Circular map for RC220761



Western blot validation of overexpression lysate (Cat# [LY404111]) using anti-DDK antibody (Cat# [TA50011-100]). Left: Cell lysates from untransfected HEK293T cells; Right: Cell lysates from HEK293T cells transfected with RC220761 using transfection reagent MegaTran 2.0 (Cat# [TT210002]).